


Project by :



vaishnavi

Builders & Developers

where skill meets style

 **Head Office** : #708, The Landmark, Plot No. 26A,
Sector - 07, Kharghar, Navi Mumbai - 410 210.

 **Email** : sales@rkgroupinfra.com

 **Website** : www.rkgroupinfra.com

 **For Sales Enquiry Contact :**
7715006666 / 9167001235

Architect : Atul Patel Architect

RCC Consultant : SHRAVANI CONSULTANTS

Legal Advisor : Adv. Ajit Singh



REGISTERED MAHARERA NO.
000000000000
<https://maharera.mahaonlin.gov.in>

Disclaimer :

This Communication is purely conceptual & is not a legal offering. It is made for only promotional purpose. This information contained in this communication is only indicative of the kind of development that is proposed and is subject to change. The developers reserve the right to make change or alternations at their sole discretion.

lola design sennhaas



vaishnavi

Builders & Developers

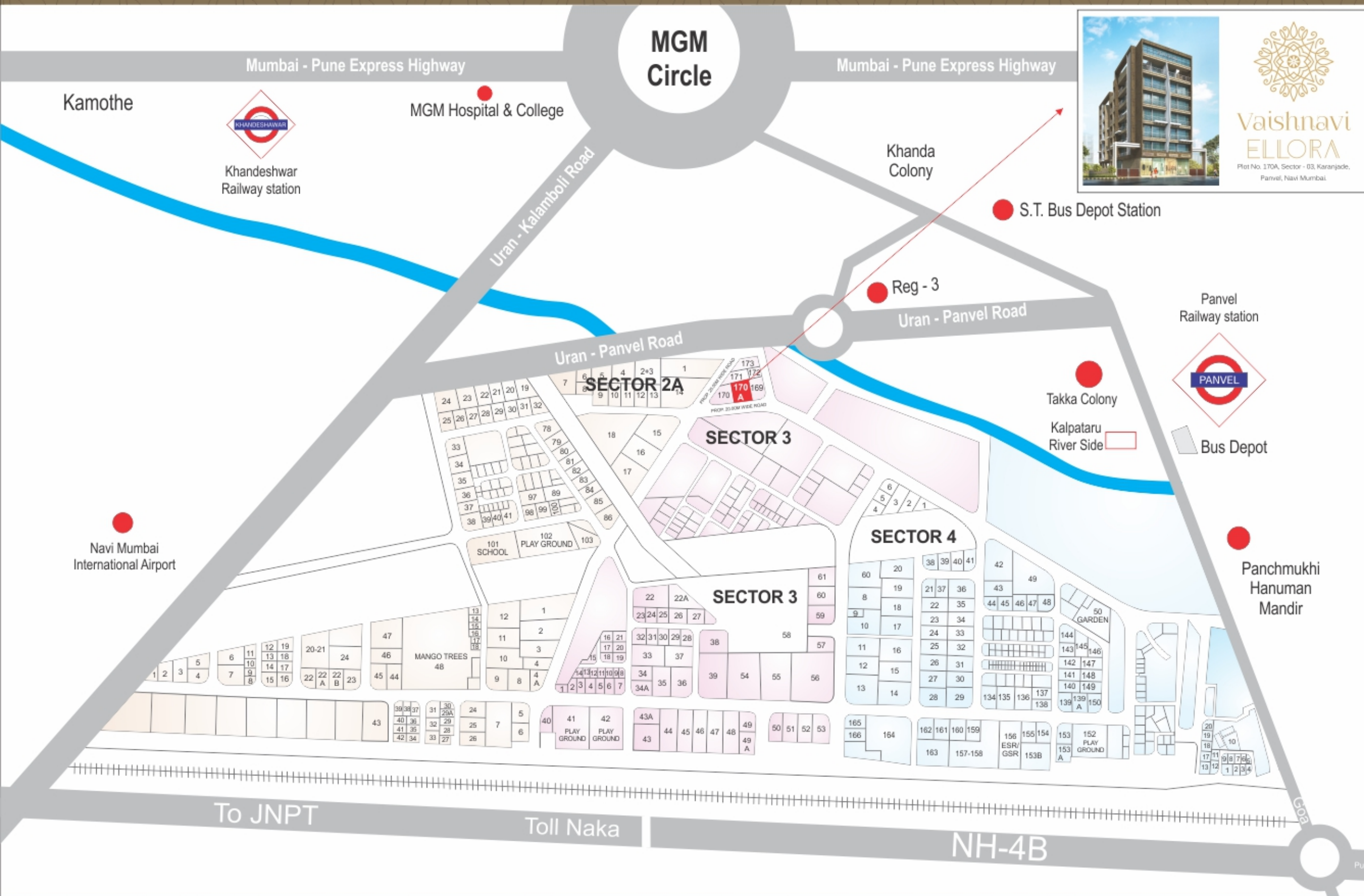
where skill meets style

ENTER YOUR NEW HOME,
A FUSION OF GRAND TRADITION
WITH CONTEMPORARY FLAIR,
NOBLE DESIGN AND
EXCLUSIVE AMENITIES



Vaishnavi ELLORA

Plot No. 170A, Sector - 03, Karanjade,
Panvel, Navi Mumbai.



The Location

- Navi Mumbai International Airport
- Panvel Railway Station
- Proposed Sea Link Mumbai to JNPT
- JNPT Port
- Express Highway
- School & Colleges

- Near by Navi Mumbai International Airport (3Km)
- 5 Minutes Drive From Khandeshwar Railway Station
- 10 Minutes Drive Panvel Railway Station
- Walking Distance From Karnala Sport Club and Surrounded by Schools, Colleges, Hospitals, Restaurants etc.
- Panvel is Surrounded by major MIDC Like Patalganga Taloja, Nagothane, Roha, Upcoming SEZ
- The Sewri-Nhava Sheva Sea Link will Connect Panvel to Mumbai City in 20 Minutes
- 2 Minutes Drive from Mumbai-Pune Express Highway/old Mumbai-Pune Goa Highway

Classy enclave, yet well-connected!

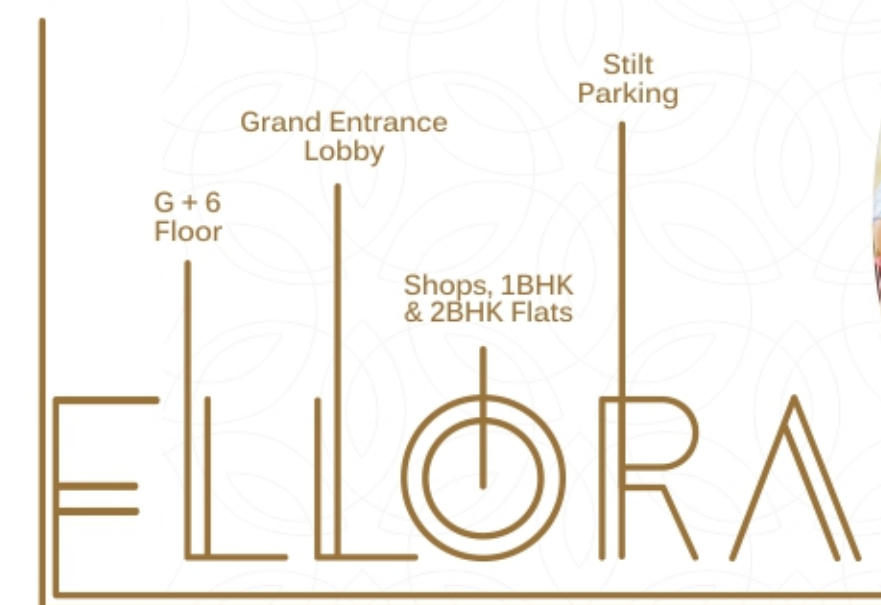


Vaishnavi ELLORA

Plot No. 170A, Sector - 03, Karanjade,
Panvel, Navi Mumbai.



CIDCO
Plot



The
project

- Clear Title Cidco Transfer Plot
- G + 6 Storey Residential & Commercial Project
- Shops, 1BHK & 2BHK Flats Available
- Quality Construction with Earthquake Resistant RCC Structure
- Taste-Fully Designed Entrance & Floor Lobbies
- Branded High Speed Elevators
- Stilt Parking for Ground Floor
- Project Approved by Major Financial Institution & Banks

The Landmark
project for future
generation!

FLOORING

- 24"X24" Vitrified flooring in all rooms.
- Designer flooring in all toilets & terrace

KITCHEN

- Granite Kitchen platform with S.S. Sink
- Designer glazed tiles upto beam height
- Provision for water purifier point

WALLS AND PAINTS

- Putty finished internal walls
- Emulsion paints for internal walls
- Acrylic paints for external walls

DOORS & WINDOWS

- Decorative laminated doors with wooden frame
- Laminate doors in Toilet
- Powder coated / Anodized Aluminum sliding windows with Molded granite sill with tinted glass

ELECTRIFICATION

- Concealed copper wiring of polycab / Finolax make with MCB's
- Adequate electrical points in all rooms
- ISI modular switches of premium make

WATER TANK

- Underground & overhead water tank with adequate storage capacity



The
Specification

TOILETS

- Designer glazed tiles up to beam level
- Branded sanitary wares of reputed make
- Premium quality of C.P. Fittings
- Provision for exhaust fan & geyser point

TERRACE

- Special water proofing treatment with China Chips flooring on top floor

Truly
one of
a kind
home!

Luxurious & Air-Condition Entrance Lobby

The journey to the apartment begins here. With a waiting, grand entrance lobby, its backdrop is made to mesmerize your senses. As you arrive here, the welcome floors will greet and surround you with luxury and comfort, creating an unmatched wall between you and the world. Visitors on the other hand, will marvel at this lifestyle.

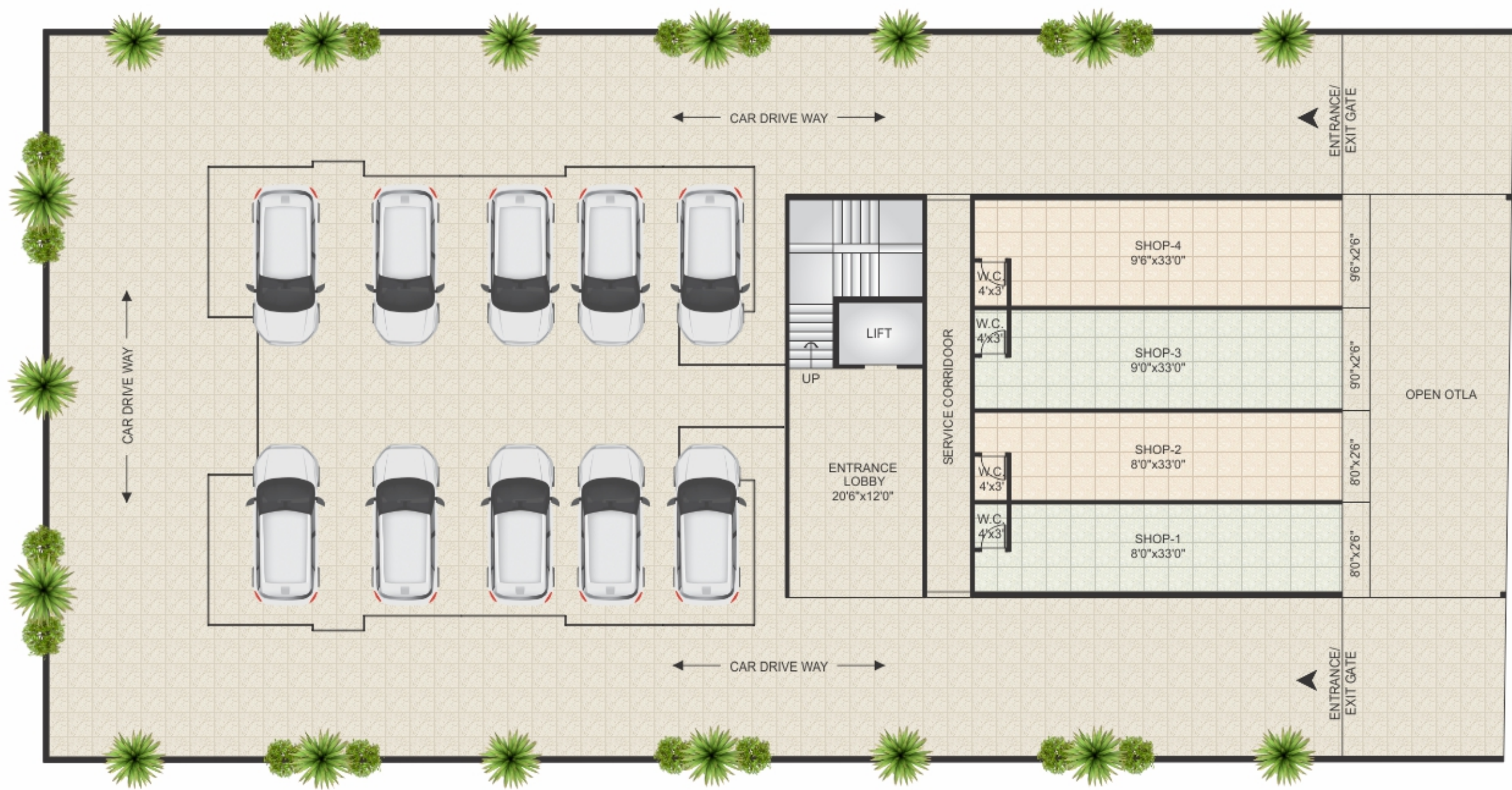


Work Out, Work Way!

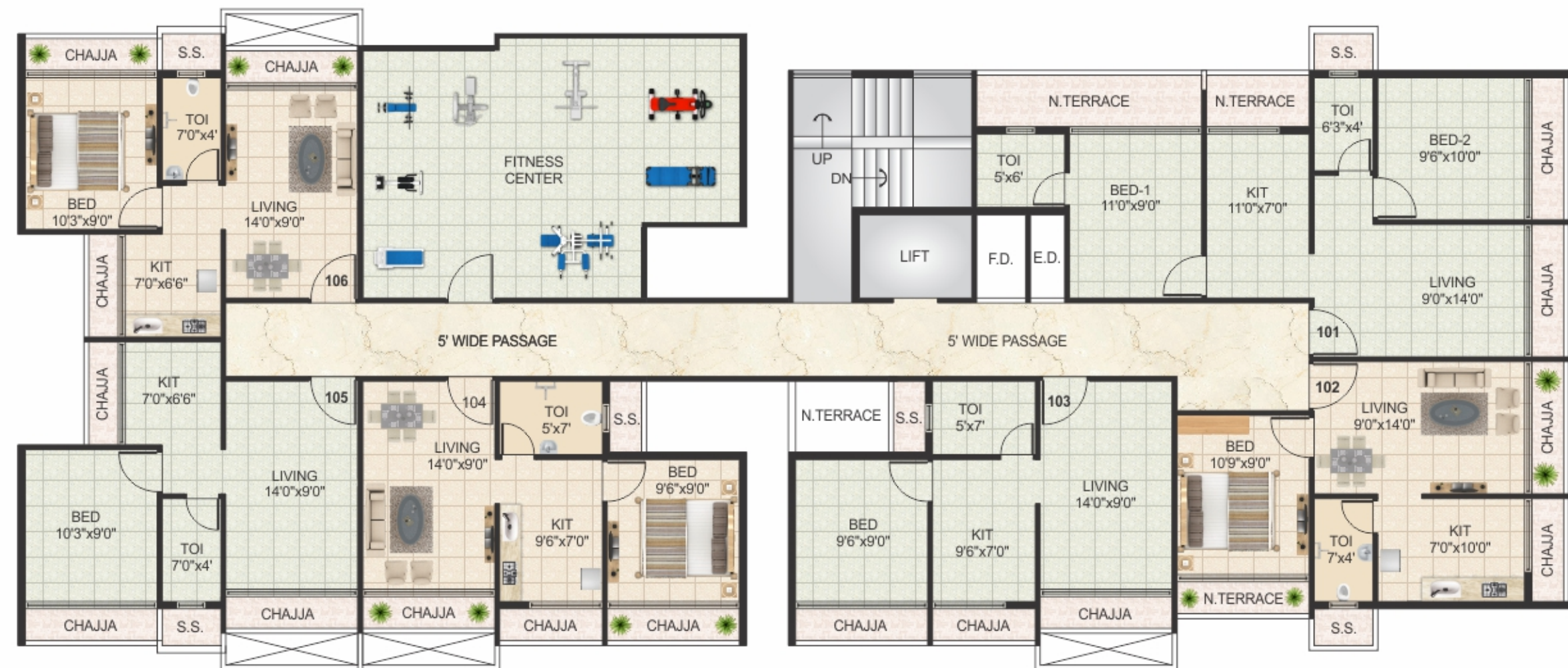
We understand the importance of a health regime, and what it means for you to miss your health routine. Keeping that in mind we have the perfect place for you to unwind and energise after a long day at work. Our Fitness Center offers state-of-the-art cardio and strength equipment for a great workout experience.

Fitness Center





Ground Floor plan



Even - Typical Floor plan

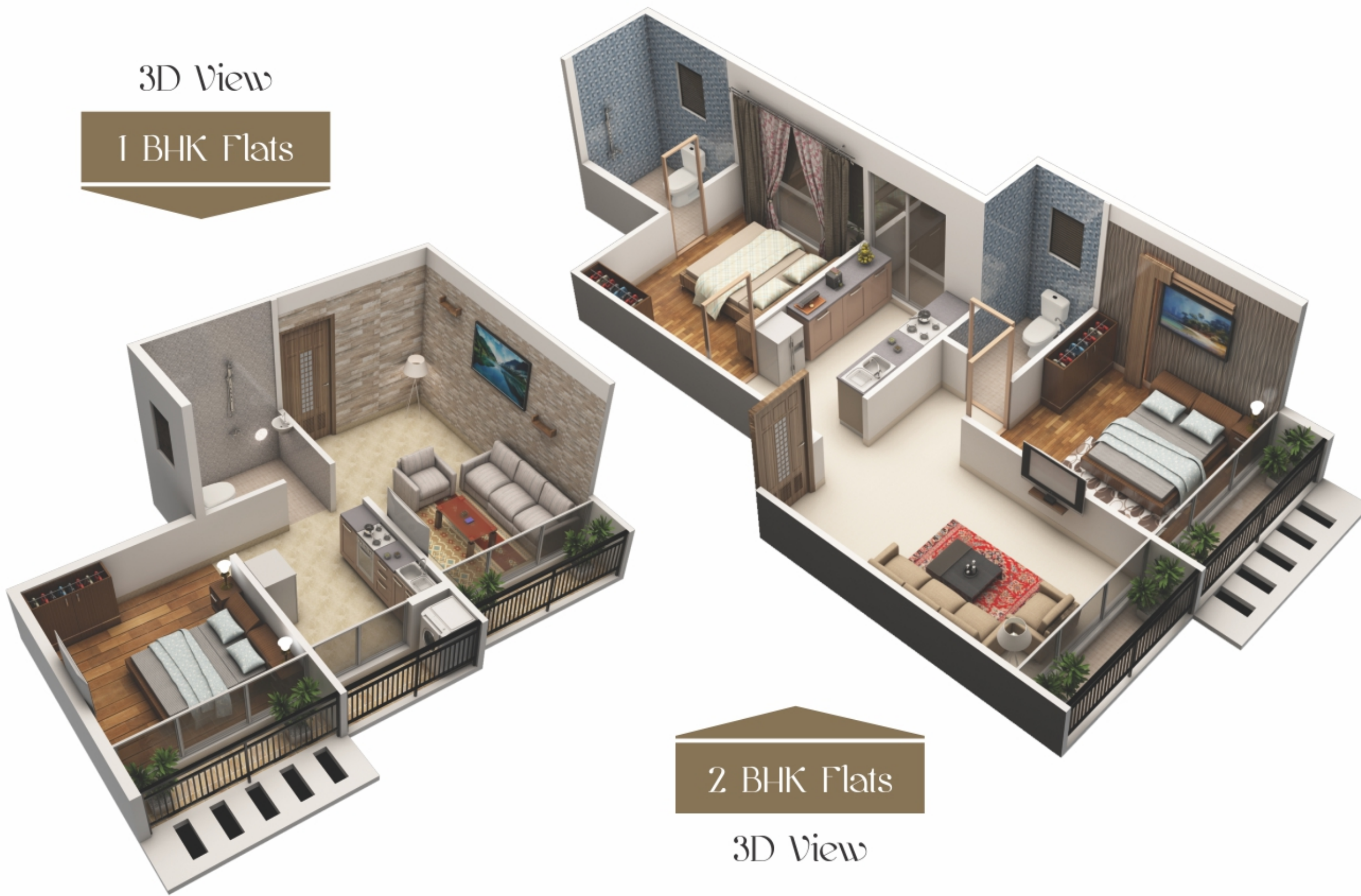


← 20M WIDE ROAD →

Odd - Typical Floor plan



3D View
1 BHK Flats



2 BHK Flats
3D View