

A decorative pattern of light gray, stylized leaf or petal shapes arranged in a circular, overlapping fashion around the central text.

1 & 2 BHK  
LIFESTYLE  
APARTMENTS

A small red icon of a house with a chimney, positioned above the word 'TRICITY' in the logo.

TRICITY<sup>®</sup>  
Avenue  
Contemporary Living



It's time to embrace a dazzling new world where each day blossoms with hope and joy. With luxuries laid on carpet and space welcoming you with open arms, there is no better place than Tricity Avenue to call home.

With its impeccable sense of design, attention to details, commitment to lasting quality and thoughtful amenities, Tricity Avenue will surpass all your expectations.



AN ADDRESS  
YOU WOULD  
LOVE TO  
FLAUNT

WHERE THE WORLD  
LOOKS UP TO YOU





THE LIFESTYLE  
YOU **DESIRE**. NOW  
WITHIN YOUR **REACH**.

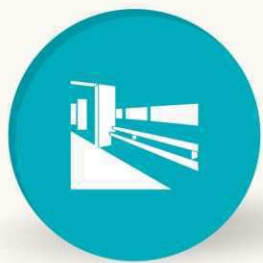


# TRICITY<sup>®</sup> Avenue

Contemporary Living

Whether you are looking for an active lifestyle or just having fun with the family, you can do it all here. Take advantage of the range of supreme amenities at the clubhouse. Tricity Avenue gives you the opportunity to 'Live your life, your way'.

BOUNDLESS CHOICES TO KEEP YOU **HEALTHY** AND **HAPPY**



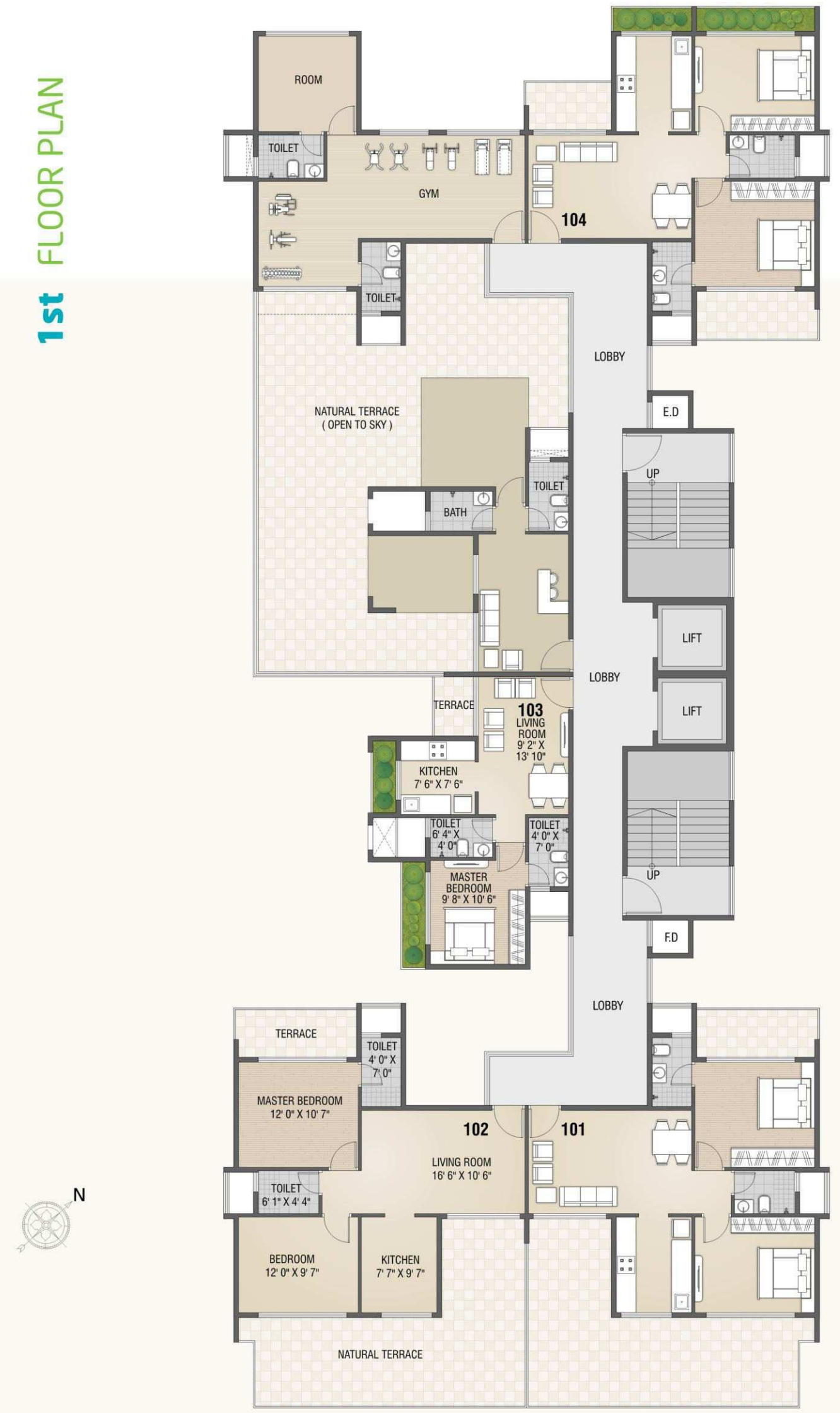
- CLUB HOUSE • GYMNASIUM • ENTRANCE LOBBY • FIRE FIGHTING SYSTEM •



**GROUND FLOOR PLAN**

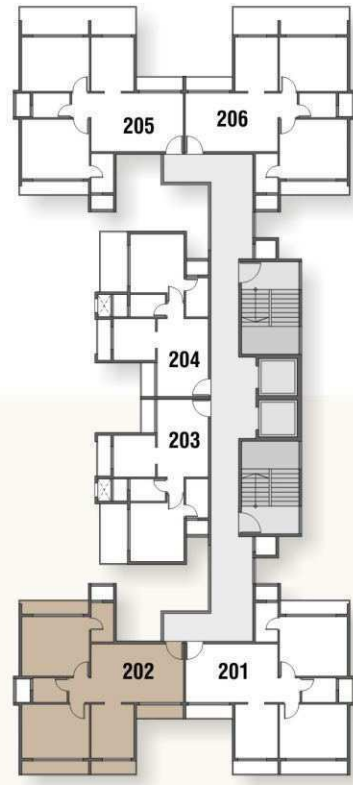


**1st FLOOR PLAN**



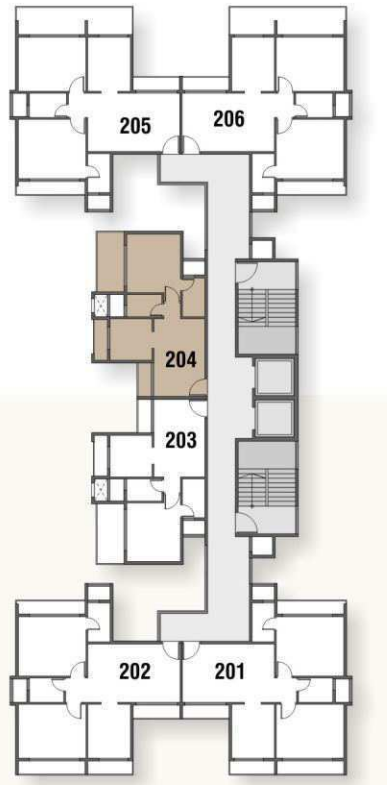
2nd FLOOR PLAN

202



2nd FLOOR PLAN

204



2nd FLOOR PLAN



3, 5, 7, 9 & 11 FLOOR PLAN





4, 6 & 8 FLOOR PLAN



10th FLOOR PLAN



## AMENITIES



**Leisure :** An air-conditioned gym and clubhouse



**Security :** Video door camera and intercom integrated system



**Parking :** Ample space for car parking



**Lobby :** Grand decorated entrance lobby



**Elevation :** Attractive elevation



**Power back-up :** Power back-up for lifts, water pump, common light and fire pump



**Pest Control :** Anti-termite treatment for the building



**Grill :** Full length on flower bed windows and half railing on terrace



**Door :** Laminated flush main door with elegant hardware fittings



**Windows :** Anodized heavy aluminium sliding with one-way reflective glass, mosquito net and moulded granite window sill



**False Ceiling :** False ceiling in flat



**Kitchen :** Granite moulded counter and additional service platform with Nirali S.S. Sink and exhaust fan provision



**External :** Texture paint on all dead walls and full acrylic paint



**Lifts :** Both automatic lifts of ThyssenKrupp, Schindler or similar make



**Staircase :** Full marble moulded staircase till top floor



**Flooring :** Vitrified tiles by a reputed brand for the entire apartment



**Wall :** Complete apartment gypsum plumb finish with 100% plastic paint



**Electrical :** Concealed copper wiring with modular switches and circuit breaker



**Fire Fighting :** Modern fire fighting system



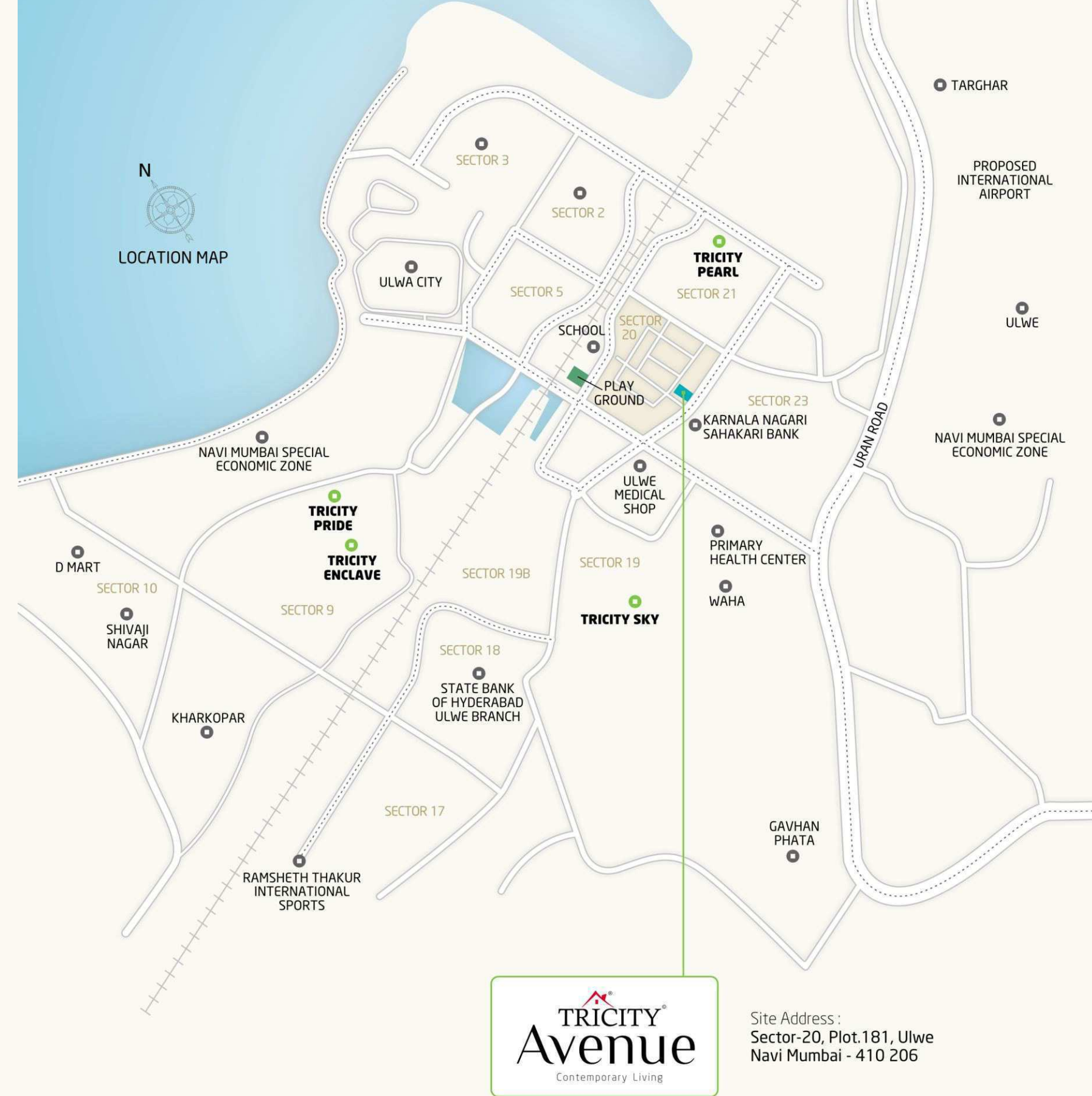
**RCC :** Earthquake resistant RCC structure



**Toilets :** Coloured/White sanitary ware of a branded make, tiles on walls and flooring with exhaust fan and geyser provisions in toilet. Water proof bathroom doors



**Plumbing :** Concealed plumbing with Jaquar or similar fittings



Site Address :  
Sector-20, Plot.181, Ulwe  
Navi Mumbai - 410 206

## LOCATION HIGHLIGHTS

- Proposed school in sector 9 & 20
- Proposed play ground in sector 20
- Commercial building - less than ½ km
- Ulwe gymkhana in sector 17
- Medical center & hospital - nearby
- Proposed international airport - nearby
- Proposed baramandongri and kharkopar railway station (10 minutes)
- Proposed sewri-nhava transharbour - nearby
- Expressway connects ulwe and palm beach road (8 -10 min. drive)
- Reliance SEZ from outline of sector 3, 9 & 10
- Abhudya Bank & ATM of Bank of Maharashtra - less than ½ km
- 15 Min. drive to kharghar (Central park, Golf course, Iskon temple & Bollywood theme park)



Office Address :  
1001/02, Bhumiraj Costarica, Plot No. 1-2  
Sector 18, Off. Palm Beach Road  
Sanpada (E), Navi Mumbai - 400 705

Site Address :  
Sector-20, Plot.181, Ulwe, Navi Mumbai - 410 206

For Contact :  
**+022 6676 6676, +91 99305 93935**  
**+91 98200 94747, +91 99305 91662**  
e-mail : [sales@tricity.com](mailto:sales@tricity.com) | [www.tricityltd.com](http://www.tricityltd.com)



Latitude: 18.977840  
Longitude: 73.030290

Disclaimer : • All plans, drawings, amenities, facilities etc. are subject to the approval of the respective authorities and would be changes, if necessary. • The discretion remains with the developer. • All rendering, floor plans, pictures and maps are the artist's conceptions and not actual depictions of the building, its walls, roadways or landscaping. • This brochure is for guidance and not a legal document. • This is not an offer document. • This brochure should also not be reproduced, copied or made available to others in any form of transmission other than intended by the developer. • The design & specifications depicted in the brochure are subject to change without prior notice. • Proposed development in the brochure is subject to approval of competent authorities.