



assorting excellent from the ordinary





# HIGHLIGHTS



**Grand Entrance Lobby  
Children Play Area  
Podium Garden**



**Jogging Track  
Modern Gymnasium  
ClubHouse**



# HIGHLIGHTS

**Modern Fire Fighting  
System  
Swimming Pool  
Ample Car Parking**

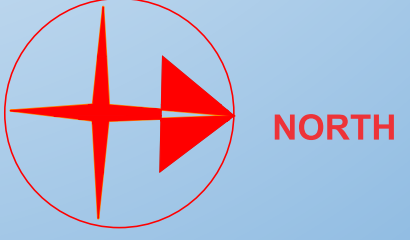
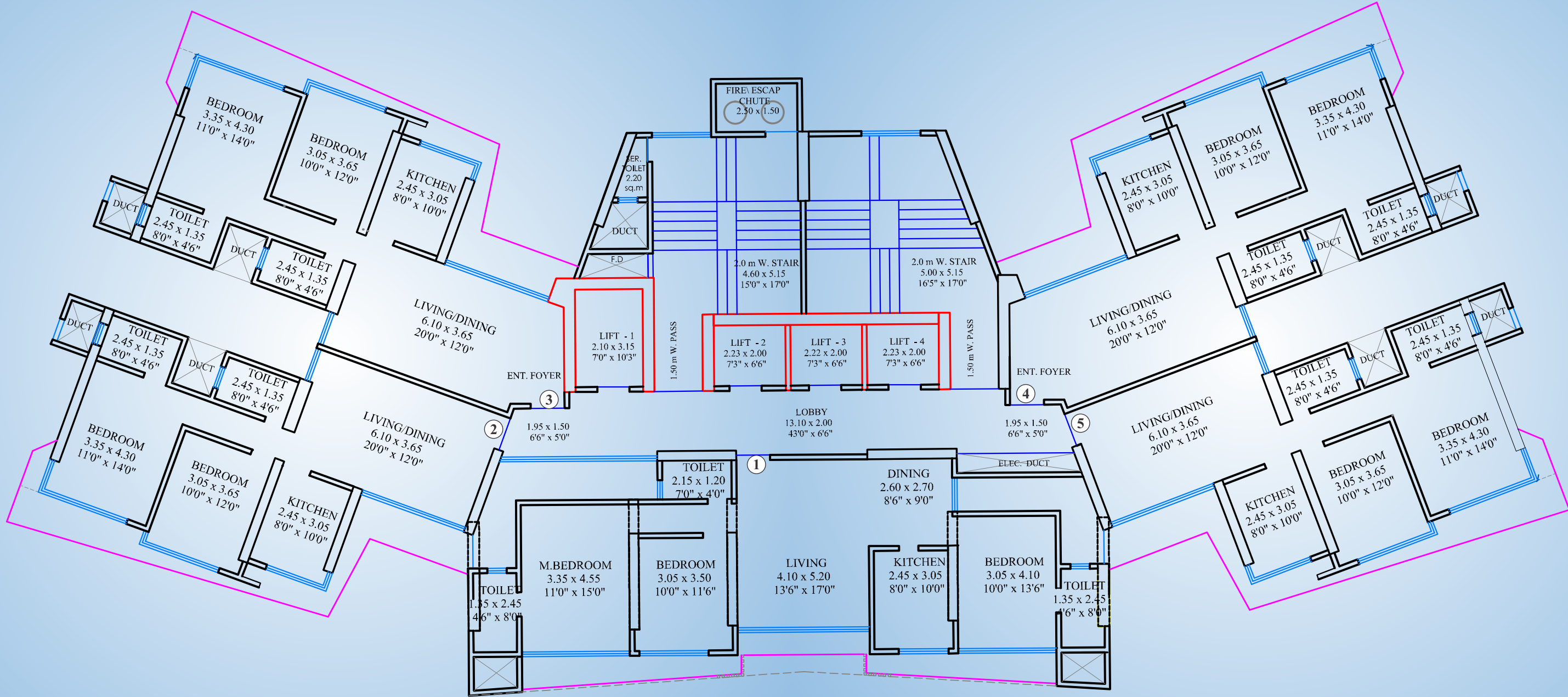


**Intercom Linked  
Security  
High Speed Elevators**





# TYPICAL FLOOR PLAN FOR 2 & 3 BHK



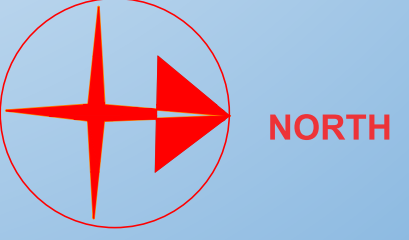
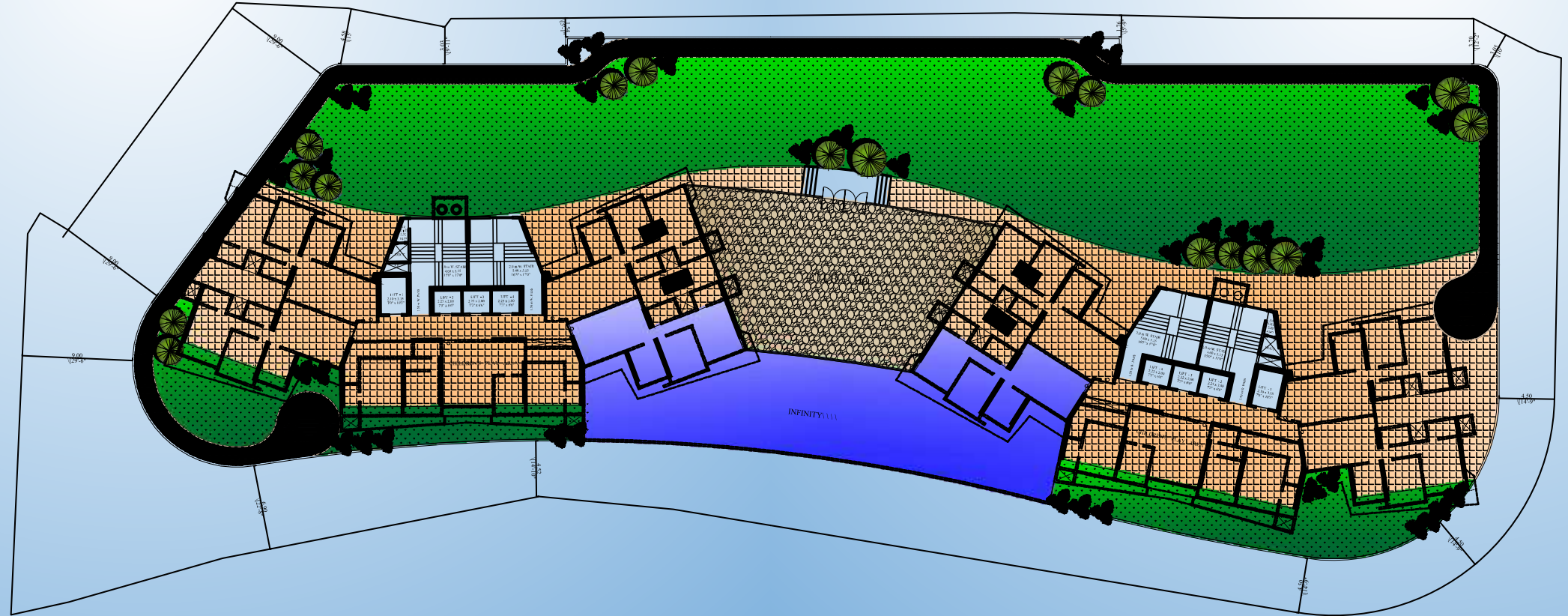
60 Ft. ROAD



# GROUND FLOOR



# SIXTH FLOOR PODIUM



60 Ft. ROAD



assorting excellent from the ordinary

# LOCATION

## Developers

Shreeji Construction

## Architects

Catapult Realty Consultants

## Design Architects

P.R.Consultants: Piyush Solanki

## Landscape Architects

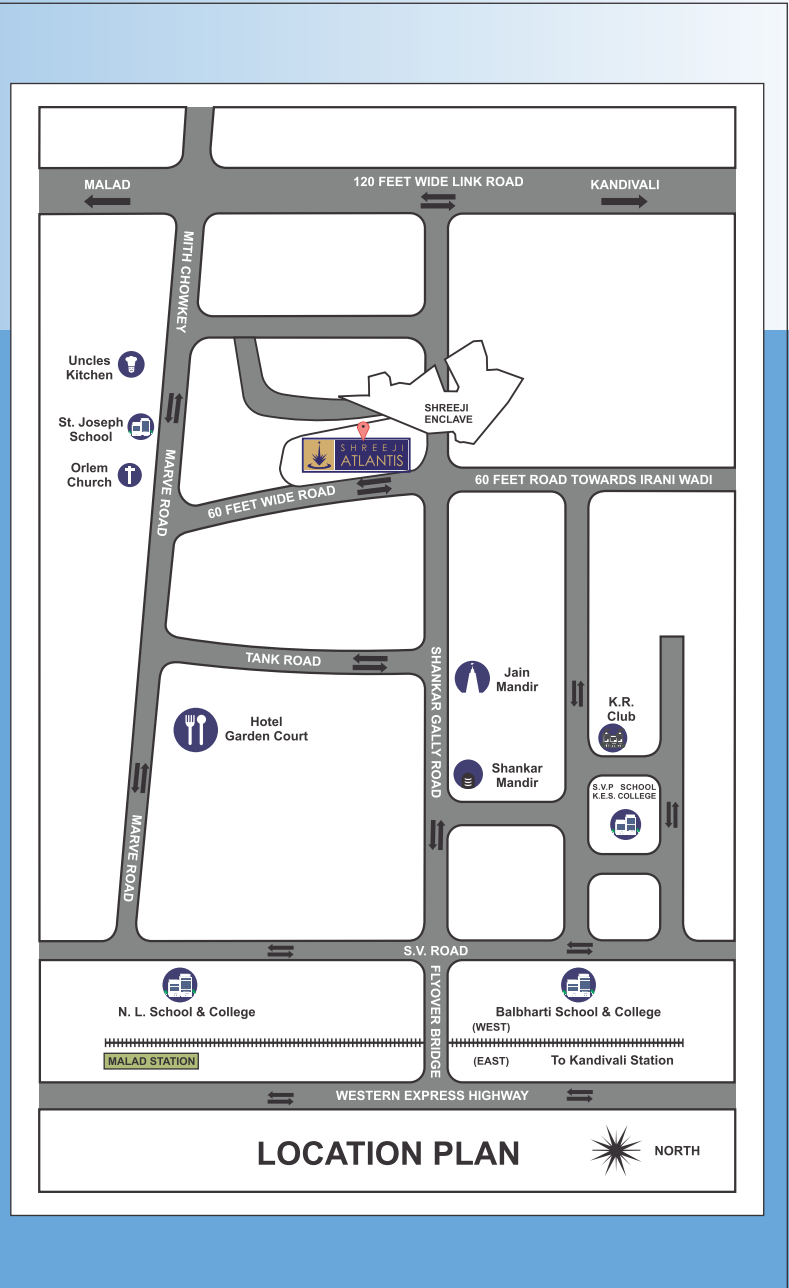
Hrishikesh Phadke

## Advocates & Solicitors

Mehta & Co.

## Site Address

Shreeji Atlantis, CTS#216,  
Gautam Buddha Marg,  
Opp.Orlem Church,  
Nxt to Prathamesh Harmony,  
Malad (West), Mumbai - 400064



- ★ **Near Malad Railway Station**
- ★ **Two minutes drive from Link Road & S.V. Road**
- ★ **Schools, Colleges, Gardens, Hospitals &**
- ★ **Worship Places in Neighborhood**
- ★ **Malls & Markets within easy reach**

**Disclaimer:**

The Information contained in this brochure is indicative of the kind of development that is proposed and it is subjective to the approval of the authorities.  
The Developers reserve their right to make changes or alteration at their sole discretion. All the plans and pictures used are rendered according to artist's perception.