



2 & 3 BHK EXOTIC HOMES  
PUNAWALE

**PHASE - II**

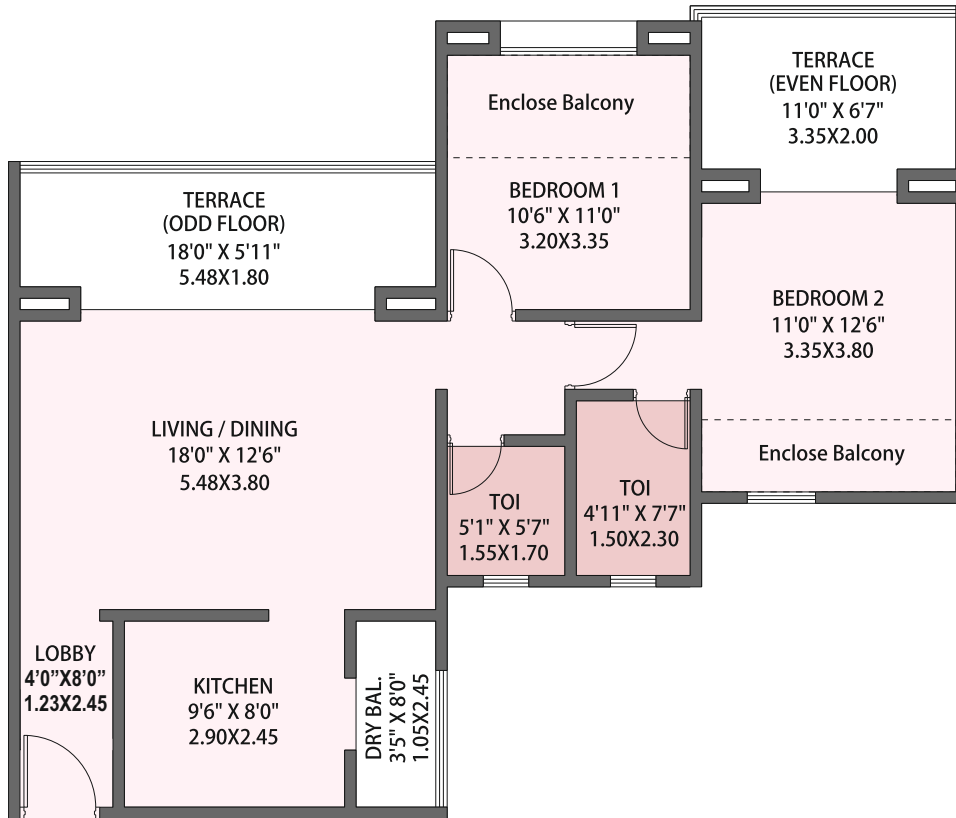


**ULTRA MODERN RESIDENCES**



## 2 BHK Odd / Even Floor Plans

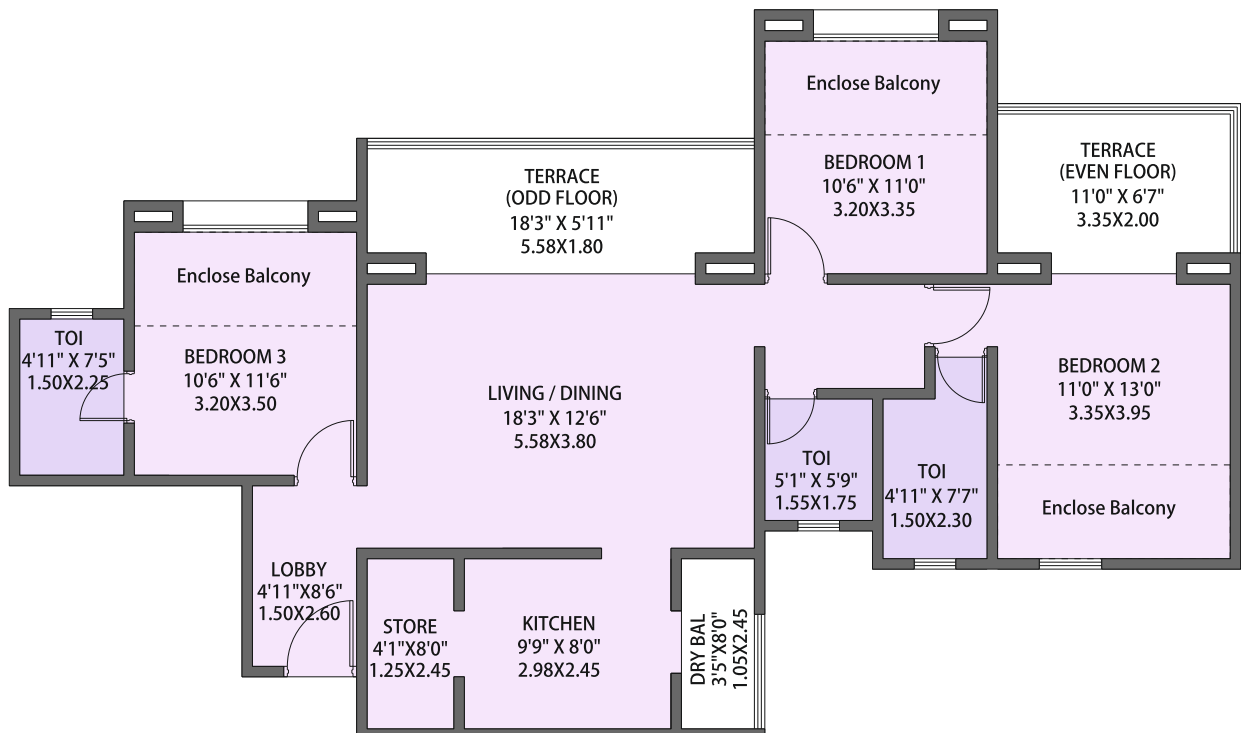
(areas 840 - 880 Sqft Carpet)



All Dimensions are from Unfinished to Unfinished

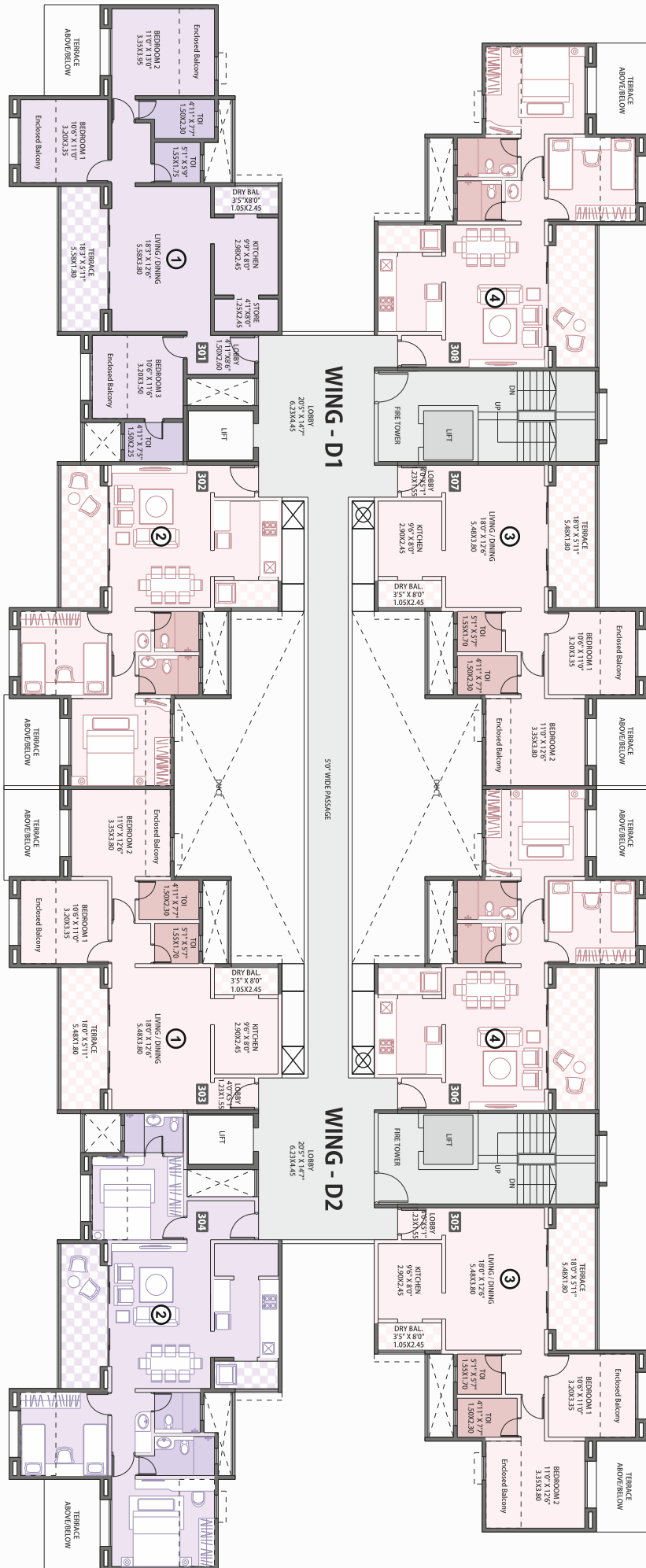
## 3 BHK Odd / Even Floor Plans

(areas 1090 - 1120 Sqft Carpet)



All Dimensions are from Unfinished to Unfinished

# WING - D1 | D2 (BUILDING 'D')



# AMENITIES



Children Play Area



Club House



Jogging Track



Landscape Garden



Special Area For Senior Citizens



Community Hall



Party Lawn



Guest Waiting Lobby



Open-air Amphitheater



Skating Area



Well-equipped Gymnasium



Yoga And Meditation Area



Well Equipped Indoor Play Area



Half Basketball Court



Multipurpose Open Court



Well Equipped Fire Protection & Fire Alarm System for Common Areas



24x7 CCTV Surveillance In Parking & Common Areas

# SPECIFICATIONS

- ◆ AC points in all bedrooms
- ◆ Aluminum powder coated sliding windows with safety grills
- ◆ Anti-Skid flooring at terrace and toilets
- ◆ Concealed plumbing and wiring with quality fittings
- ◆ Dado tiles upto false ceiling in all toilets
- ◆ Generator back up for the lighting load all over the flat
- ◆ Intercom facility in each flat
- ◆ Main door with standard latch fittings
- ◆ Mosquito net for all windows and glass doors
- ◆ Parallel kitchen platform with stands
- ◆ Solar hot water for bathing in each toilet
- ◆ SS railing with toughened glass for terrace
- ◆ Telephone points in all bedrooms and living room
- ◆ Total vitrified flooring all over the flat
- ◆ TV points in living room, master bedroom
- ◆ Video Door Phone with bell
- ◆ Wall hung European water closet (commode) in all toilets



## EDUCATIONAL HUBS

- ◆ Akshara International School
- ◆ Balaji Institutes of Modern Management
- ◆ Blossom Public School
- ◆ Indira Global Business School & College
- ◆ J.S.P.M. Institutes
- ◆ Lotus Business School
- ◆ Padmashree Dr. D.Y.Patil Institutes of Engineering, Management & Research

## HOSPITALS

- ◆ Aditya Birla Hospital
- ◆ Cantonment Hospital, Dehuroad
- ◆ Life Point Hospital
- ◆ Lokmanya Hospital
- ◆ Niramaya Hospital
- ◆ Ojas Multispeciality Hospital

## RETAIL

- ◆ Big Bazaar / D - Mart

## HOTELS & RESTAURANTS

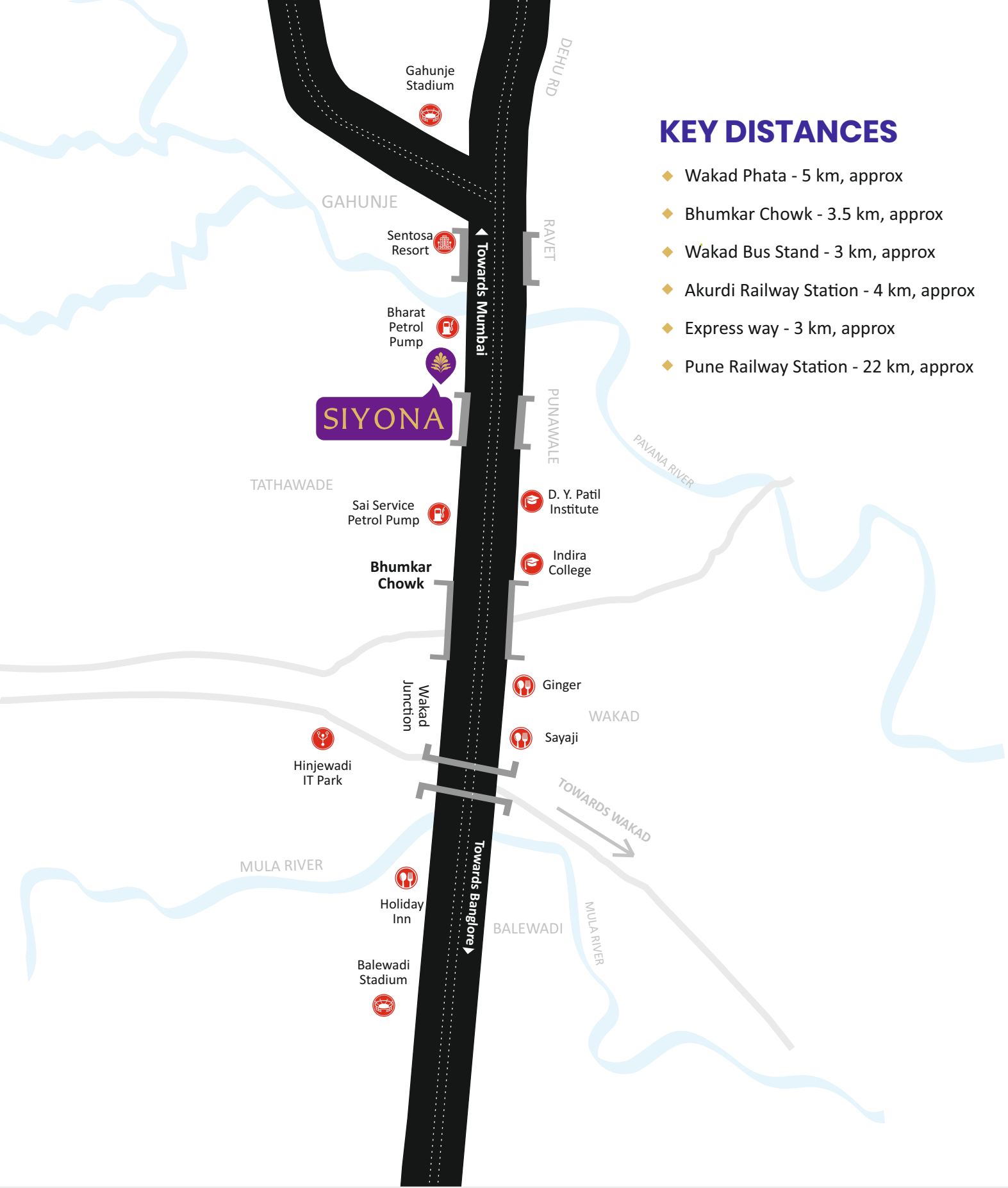
- ◆ Ginger
- ◆ Sayaji
- ◆ Ramada
- ◆ Sentosa Water Resort
- ◆ VITS/ Orchid
- ◆ Punjabi Rasoi

## BANKS & ATM

- ◆ Bank of Maharashtra
- ◆ IDBI BANK
- ◆ State Bank of India

## BUS STOP & RAILWAY STATION

- ◆ Akurdi Railway Station
- ◆ Koyte Wasti Bus Stop
- ◆ Kiwale Bus Stop



## KEY DISTANCES

- ◆ Wakad Phata - 5 km, approx
- ◆ Bhumkar Chowk - 3.5 km, approx
- ◆ Wakad Bus Stand - 3 km, approx
- ◆ Akurdi Railway Station - 4 km, approx
- ◆ Express way - 3 km, approx
- ◆ Pune Railway Station - 22 km, approx

**SIYONA**

RERA NO.:  
**P52100020135**



maharera.mahaonline.gov.in

Member of :



**CREDAI**  
PUNE METRO

Pethkar Projects, 'SIYONA', S.NO. 47,48 & 50, Punawale, On Mumbai - Bengaluru

Highway, Near Bharat Petrol Pump, PCMC - 411033, Pune, Maharashtra, India.

9764995555 | mail@pethkarprojects.com | www.pethkarprojects.com