



BUILDTECH  
HEIGHTS

Live Above  
It All







## Life On New High

Experience a stress free, relaxing lifestyle at Buildtech Heights. Perfectly situated in a peaceful & nestled amidst the greenest, low density area of eastern mumbai, spread across land over ridge. Multistorey tower boast of breath taking panoramic views of the city, sea & forest. The tower is tastefully designed, optimally sized 1 & 1 BHK jodi apartments.

### Project Amenities



Gym



Entrance Lobby



CCTV



Earthquake Resistant  
Structure



Automatic  
Lifts



Stack Car  
Parking

### Apartment Amenities



Modular Switches



Exhaust fan



Vitrified Flooring



Highend  
Sanitaryware



French  
Windows

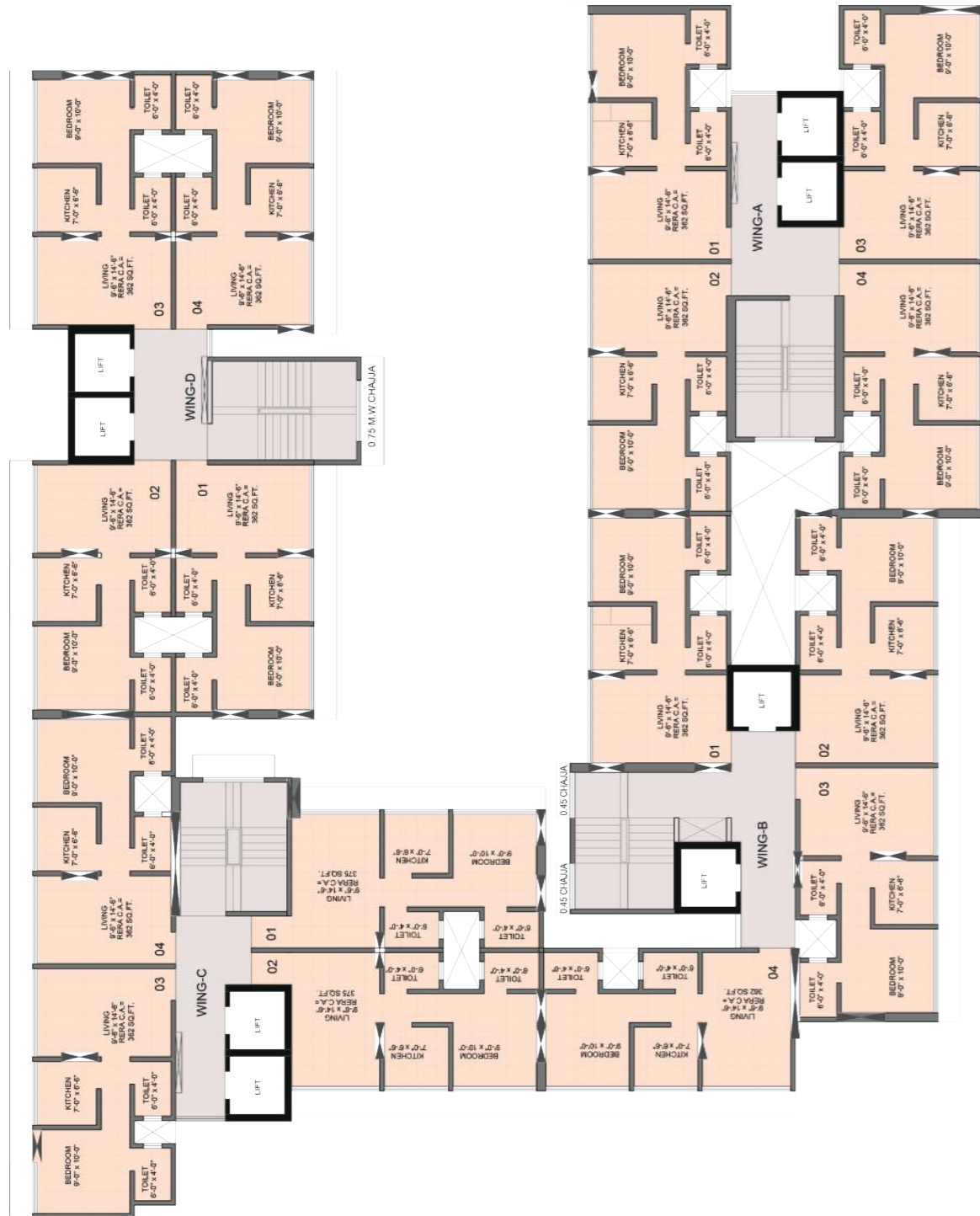


Gypsum Finish  
on Internal Wall





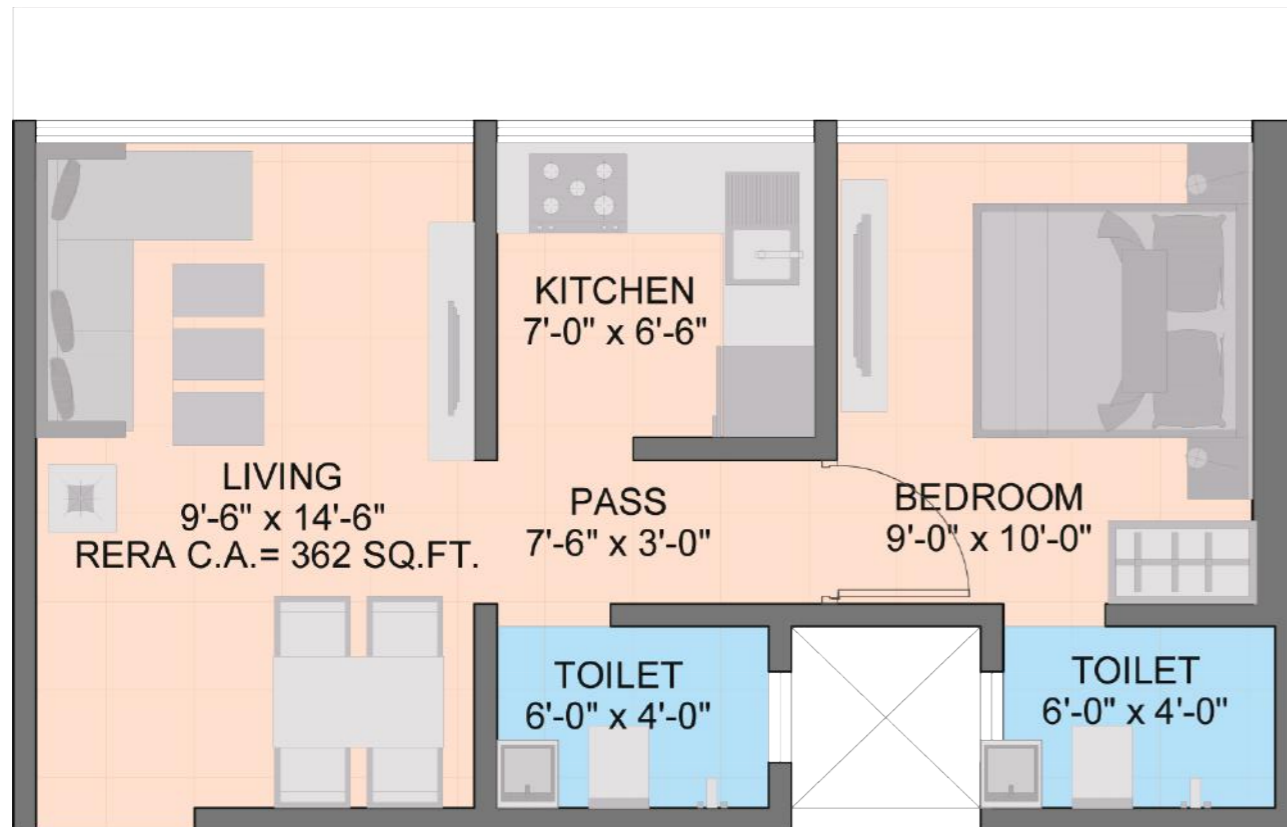
Typical Floor Plan



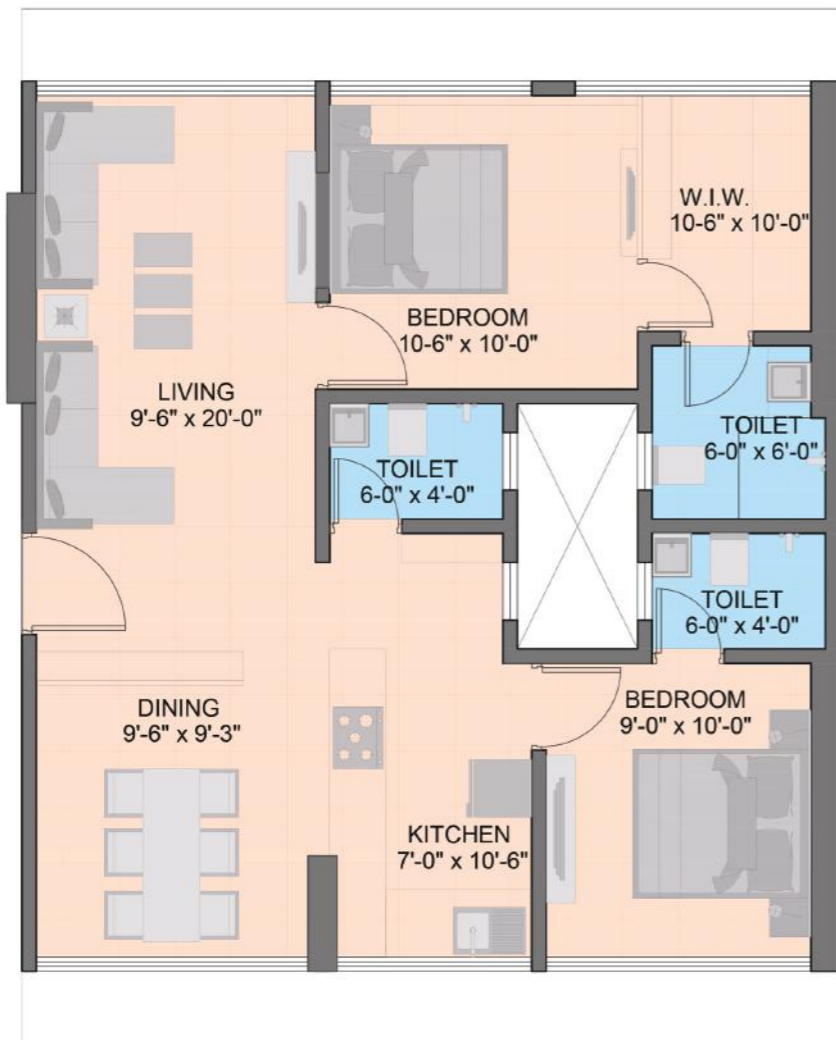
Typical Refuge Floor Plan



1 BHK  
2D Plan

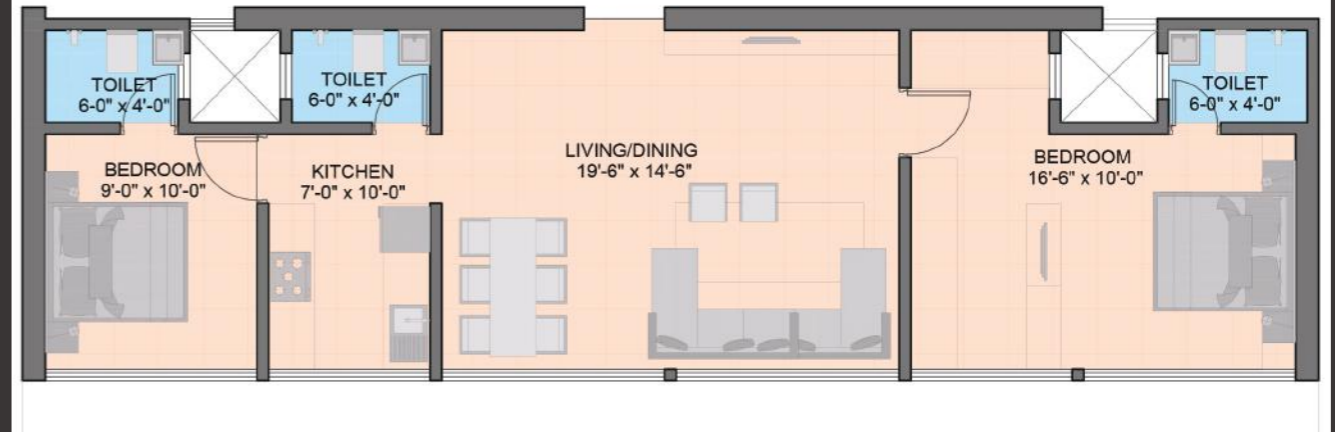


1 BHK  
3D Plan



TYPE 1

  
2 BHK  
(Jodi of 1 BHK)



TYPE 2

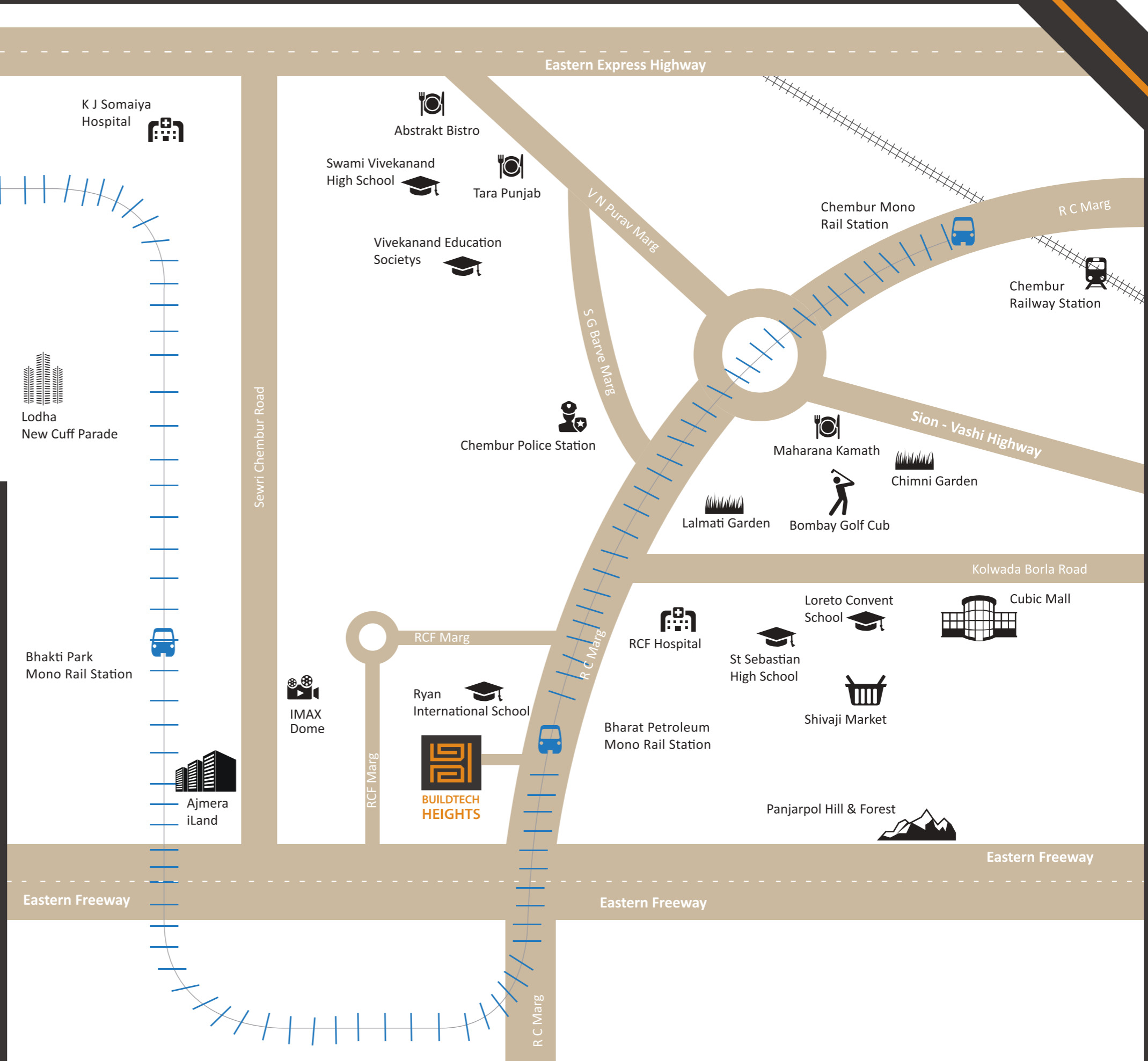


2 BHK  
(Jodi of 1 BHK)



## Location Map

- # 70 meters - Bharat Petroleum MonoRail Station
- # 80 meters - Ryan International School
- # 2 Kms - Eastern Freeway
- # 3 Kms - Eastern Express Highway
- # 3.5 Kms - Chembur Railway Station
- # 8 Kms - Bandra Kurla Complex
- # 16 Kms - International Airport
- # 15 Kms - Fort
- # 10 Kms - Vashi Toll Naka
- # 6 Kms - Propose IT & Business Hub At Wadala





**SITE ADDRESS -**

Buildtech Heights, Opp. Bharat  
Petroleum Mono Rail Station, Beside  
Ryan International School, R C  
Marg, Chembur, Mumbai - 400 074

Architect & RCC Consultants : M/s Ellora Projects Consultants Pvt. Ltd.  
Solicitors : M/s Solicis Lex

**A PROJECT BY**



**BUILDTECH  
HOMES**

Buildtech Group Of Companies

HEAD OFFICE - B - 518, Samartha Aishwarya, Opp. Tarapore Tower,  
Lokhandwala, Andheri (W), Mumbai 400 053

 [www.buildtechgroup.co.in](http://www.buildtechgroup.co.in)  [enquiries@buildtechgroup.co.in](mailto:enquiries@buildtechgroup.co.in)

 **+91 9699 957 957**

Disclaimer : The information contained in this brochure is indicative of the kind of development that is proposed, subject to the approval of the competent authorities. The developer reserves the right to make the changes or alterations at their sole discretion, without any notice or any obligation. Images are shown in this brochure are just artistic impression.

MAHA RERA No.  
P51800015214