

Location Map (Not To Scale)



**DEVELOPER**

United Construction Company. Shop No.1, Arizona Society. Near HDFC Bank, Thane East.  
Ph.: 25321596

**ARCHITECTS**

Design Crest,  
001/002, Varad Ashish, Plot No.B/31,  
Sector 9, Airoli, Navi Mumbai - 400708

**R.C.C. CONSULTANTS**

Epicons Consultants Pvt Ltd.  
216/A, Amargian Complex, Opp S.t. depot,  
Lbs Road, Khopat, Thane West 400601

**LEGAL CONSULTANTS**

G.K.Jagiasi & Co.  
225, 2nd Floor, Shiv Center, Sector 17,  
Vashi Navi Mumbai - 400703

**SALES TEAM**

Lord Estate.  
Shop No 1, Arizona Society,  
Near HDFC Bank, Thane East 400603

**SITE ADDRESS:** Patilwadi, Near Hari Om Nagar, Mulund East, 400081

**SALES ; 9820284892 | 9820505154 | 25321678**

Disclaimer: This printed/digital material/advertisement is only an invitation to offer and does not constitute a contract of any type between the Owner/ Developer and the recipient. This printed/digital material/advertisement is merely conceptual and is not a legal document. Interior designing used in the Flat/ Unit plans/ isometric view are for representation purpose only. Any purchaser of this development shall be governed by the terms and conditions of the agreement for sale to be entered into between the parties and no details mentioned in this printed/digital material/advertisement shall in any way govern such transaction. All intending purchasers are bound to inspect all plans and approvals and apprise themselves of all the plans and approvals and other relevant information and nothing in this printed/digital material/advertisement is intended to substitute the actual plans and approvals obtained from time to time. The purchaser must refer to the agreement for sale for actual details. All layouts, pictures, visuals, sketches, drawings, specifications, locations, plans and views of buildings and apartments are artist's impression, are not to scale and for representation purpose only and the same are subject to approvals from concerned approval authorities. Dimensions may be written in square feet or feet for ease of reference, the same can be converted to metric scale with approximate conversion ratio of 1 square metre = 10.764 square feet and 1 metre = 3.28 feet. Any financial or subvention scheme is subject to sanction of the purchasers eligibility from financial institutions/ banks offering the scheme. All plans, drawings, facilities, etc., are subject to approval of respective authorities and would be change if necessary. The discretion remain with the developer. All renderings/ floor plan, pictures, map, are the artist conception and not actual depiction of building, its walls, roadways or landscaping. The developer does not warrants or any legal liability or responsibility for the accuracy, completeness or usefulness of any information disclosed.

Shyam

An Artist's Impression



**AMENITIES**

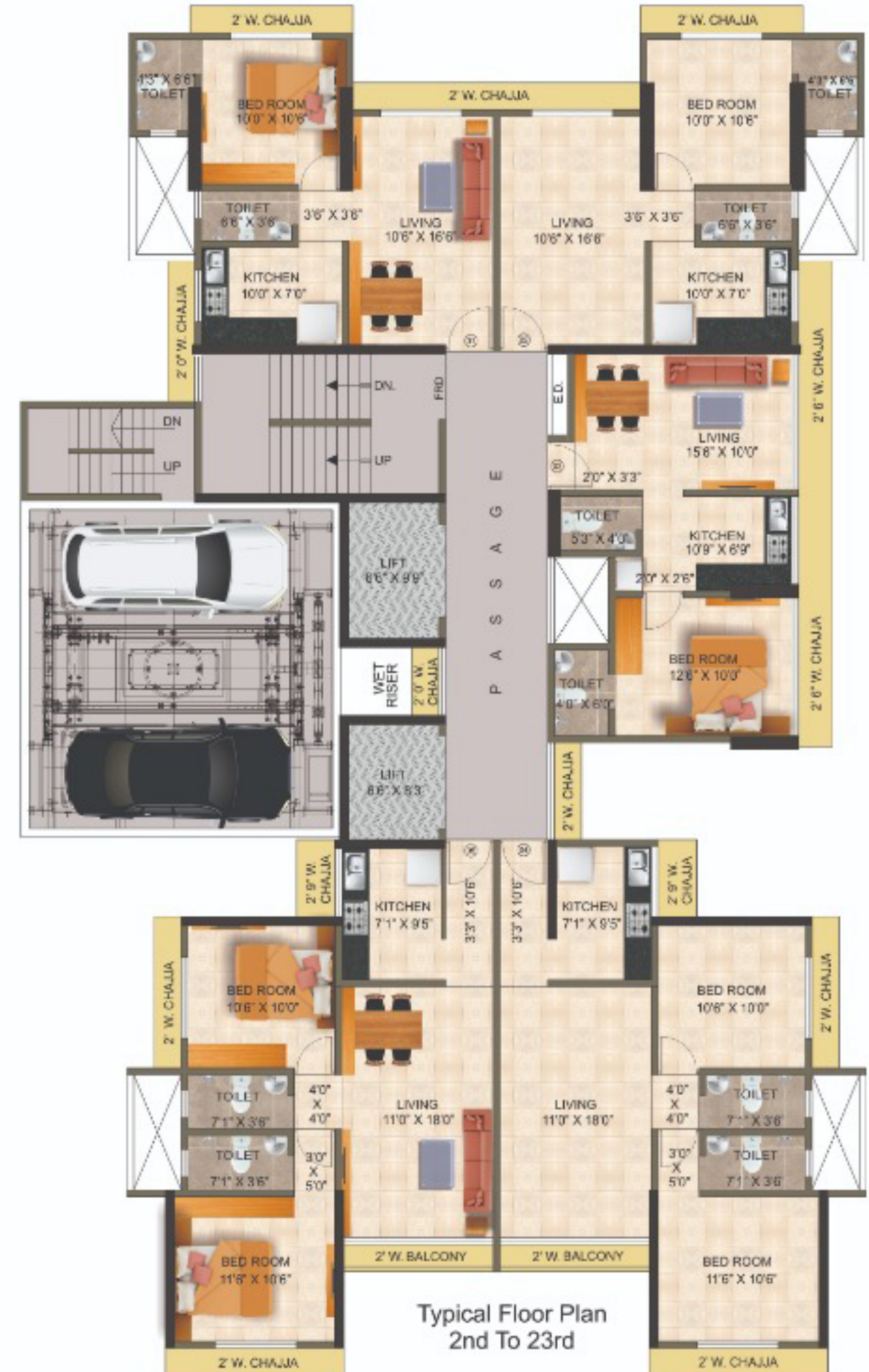
- Concealed Electrical Wiring .
- Vitrified Flooring Tiles .
- Concealed Plumbing Piping
- Full Wall Tiles In Bathroom.
- Tiles At Linten Level In Kitchen
- Granite Platform In Kitchen .
- French Window In Living Room.
- Granite Frame For Windows, Bathroom/Toilet.
- Intercom Facility In Each Flats
- DG back up for common areas and lift

**PROJECT FEATURES**

- Sale building 23 floors with 1BHK & 2BHK
- Rehab building 20 floors
- Rain Water Harvesting
- Decorative Entrance Lobby
- CCTV monitoring
- Bank loan available
- Fitness Center.
- Society Office.
- Tower Parking for Car

**LOCATION ADVANTAGE**

- 1 Km From Thane Railway Station
- 1 km From Eastern Express Highway



Typical Floor Plan  
2nd To 23rd

Flat No.	1	2	3	4 & 5
Sq.Ft.	441 Sq.Ft.	441 Sq.Ft.	436 Sq.Ft.	657+22 Sq.Ft. Bal.

