

— — — — —  
— — — — —  
LIVE THE  
SIGNATURE  
— — — — —  
LIFE — — — — —

 *Omkareshwar*  
BY TRIUMPH

BORIVALI-E





CHOICEST  
LUXURIES,  
FOR THE  
CHOSEN ONES

For those who have achieved a significant mark in life  
For those whose style is a nothing less than a statement  
For those who have a distinct choice of living  
And for those whose signature speaks louder than words

The life with finest luxuries is waiting at Borivali-East  
From striking architecture to high-class aesthetics  
From strategic location to daily conveniences  
From sophisticated lifestyle to optimum spaces  
Everything you get here is the representation  
of your status  
Just like your Signature

Welcome to Triumph Omkareshwar  
- The Signature Life of You!



# BORIVALI - A WELL-CONNECTED PRIVILEGED WORLD FOR THE DISTINGUISHED



## Location High Points

- A Vibrant Community Address
- Mumbai's Prime North-Western Suburb
- Address of Greenery with Sanjay Gandhi National Park in East & Gorai Forest in the West
- Excellent Bus Network, Local Rail, Taxis & Autos Ensures Ease of Commuting
- Best Connectivity through Western Expressway (NH8) and International Airport
- Enhancing commuting in future through Upcoming Metro
- Major Hospitals, Banks, Malls, Multiplexes, Superstores, Schools, Colleges, Hotels, Restaurants in vicinity
- Spiritual Destinations including Vipasana Pagoda, Swami Narayan Temple and Jain Derasers nearby
- Prominent Lifestyle and Entertainment Destination like Essel World, Water Kingdom etc nearby





# LOCATION IS EVERYTHING BORIVALI - EAST



## Connectivity and Conveniences

Borivali Railway Station - **0.5 K.M.**

Metro Station - **0.5 K.M.**

Western Express Highway - **0.5 K.M.**

Metro Mall - **0.8 K.M.**

Shatabdi Hospital - **0.8 K.M.**

National Park - **1 K.M.**

Raghuleela Mall - **1.1 K.M.**

Geetanjali Jain Derasar - **1.2 K.M.**

Shree Sambhavnath Jain Derasar - **1.2 K.M.**

Sai Dham Temple - **1.4 K.M.**

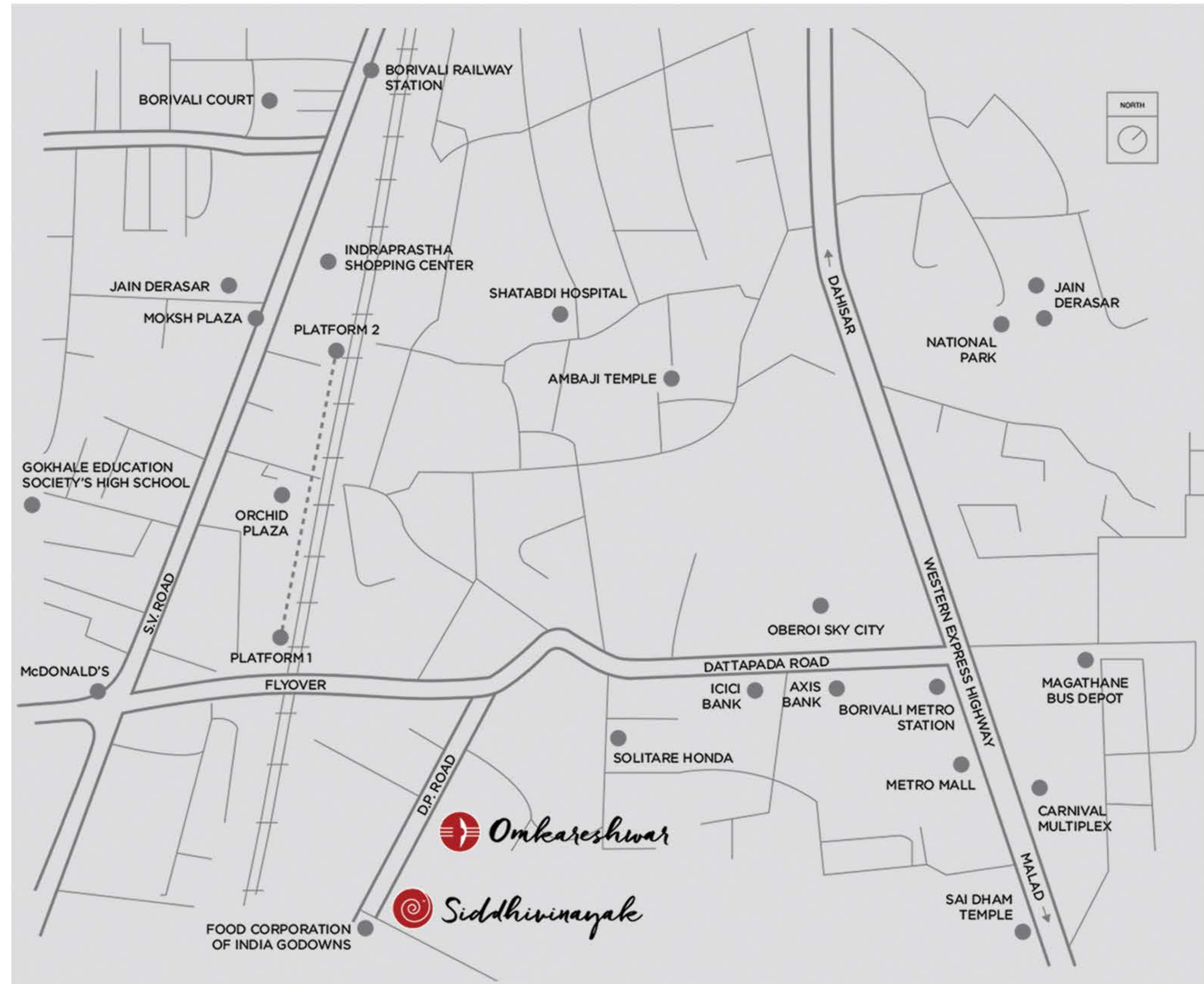
National Hospital - **1.4 K.M.**

Singapore International School - **2 K.M.**

Don Bosco - **2.1 K.M.**

Ryan International School - **4.4 K.M.**

International Airport - **14.5 K.M.**







# THE LANDMARK OF SIGNATURE LIFE

FOR THE ADMIRERS OF HIGH LIVING



*Omkareshwar*  
BY TRIUMPH

## Project Hallmarks

.....  
An Iconic Tower with 2 wings of 21 Storeys

.....  
Thoughtfully Planned 2 BHK Residences

.....  
Sky Lifestyle Avenues on Rooftop

.....  
Extraordinary Health & Recreation on Mezzanine Floor

.....  
2 Double-height Entrance Lobbies

.....  
Advanced Security & Video-door Phones

.....  
Triple Basement Parking Spaces

.....  
Jain Deraser in the Vicinity





# PANORAMA OF THE GREENS AND THE CITY

TAKING YOU TO THE NEW HEIGHTS OF LIFE



Mesmerising Open Green View and City's Skyline



Borivali West

Food Corporation of India

FM Cariappa Flyover



# ENTER INTO YOUR REALM OF SIGNATURE LUXURIES



Grand Entrance Porch with Drop-off Area

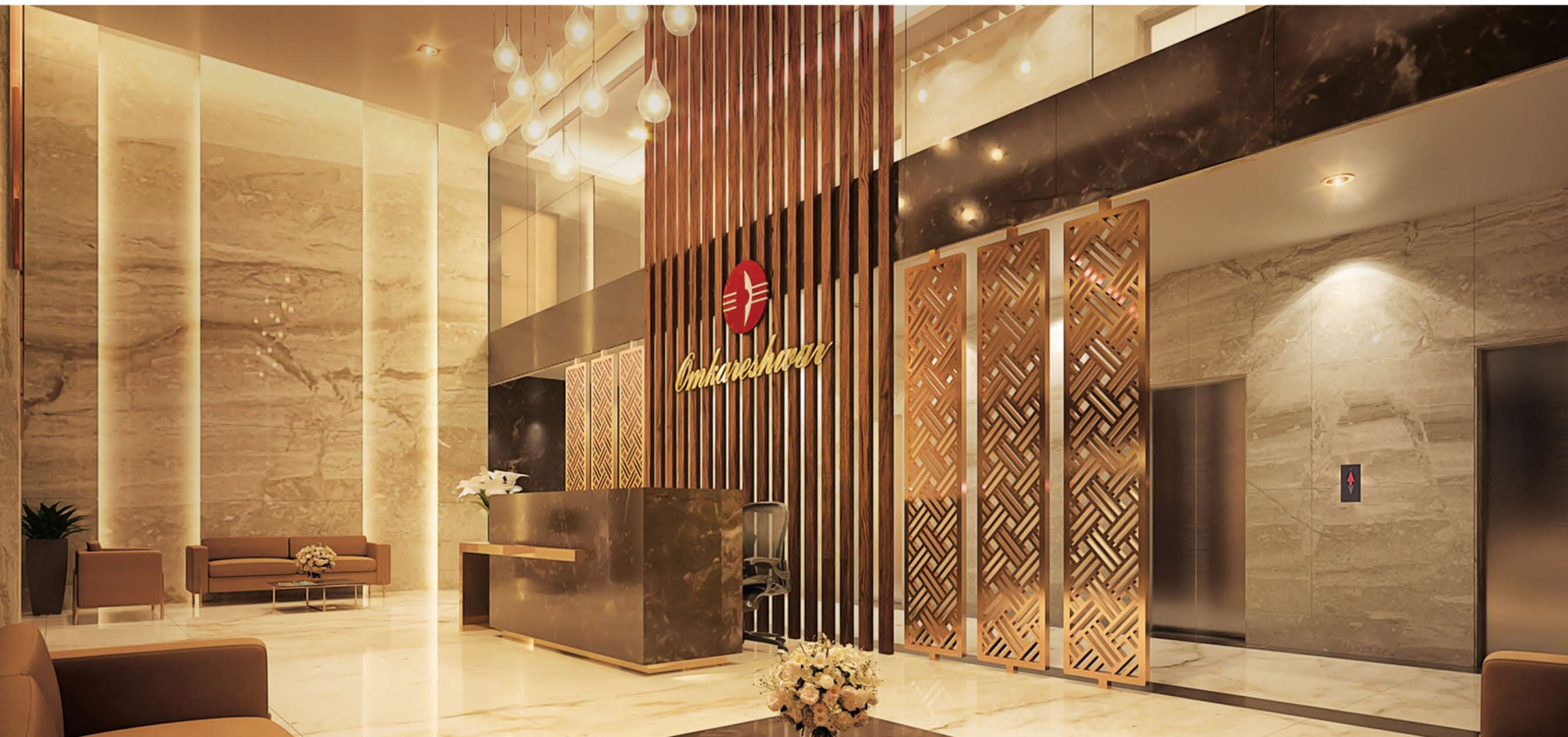




# THE EPITOME OF YOUR GRANDEUR & CLASS



Grand Entrance Lobby in A Wing





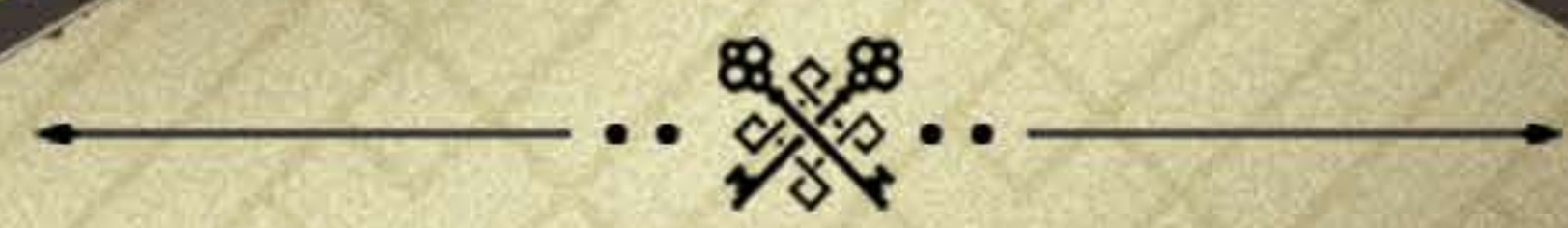
# THE MARK OF YOUR SIGNATURE ARRIVAL



Grand Entrance Lobby in B Wing







THE SIGNATURE  
SKY LIFE  
FOR A LIFESTYLE  
ABOVE THE REST

EXTRAORDINARY SKY LIFESTYLE  
FEATURES ON THE ROOFTOP





## A LIFE AS HIGH AS YOUR STATURE



### Rooftop Lifestyles Amenities

- Opulent Sky Garden with Designer Landscaping
- Sky Kids Play Area with Sand Pit
- Walking Track & Pathways
- Senior Citizens Zone and Luxury Sit-Outs





PLAY & JOYS  
REACH TO THE SKY



Kids Play Area On Atrium Level





A SKY WALK  
TO FIND  
YOUR HEALTH PATH

Walking Track & Pathways





# WORLD OF WELLNESS NOW COMES HOME



Air-conditioned International Standard  
Well-equipped Fitness Centre



# PEACE FOR MIND, BLISS FOR SOUL



Peaceful Yoga and  
Meditation Room





# REDEFINING BIG SCREEN ENTERTAINMENT



Private Mini Theatre for Movies and Live Sports







THE SIGNATURE  
HOMES AND  
TOWER  
FEATURES

For the Comfortable and  
Convenient Living

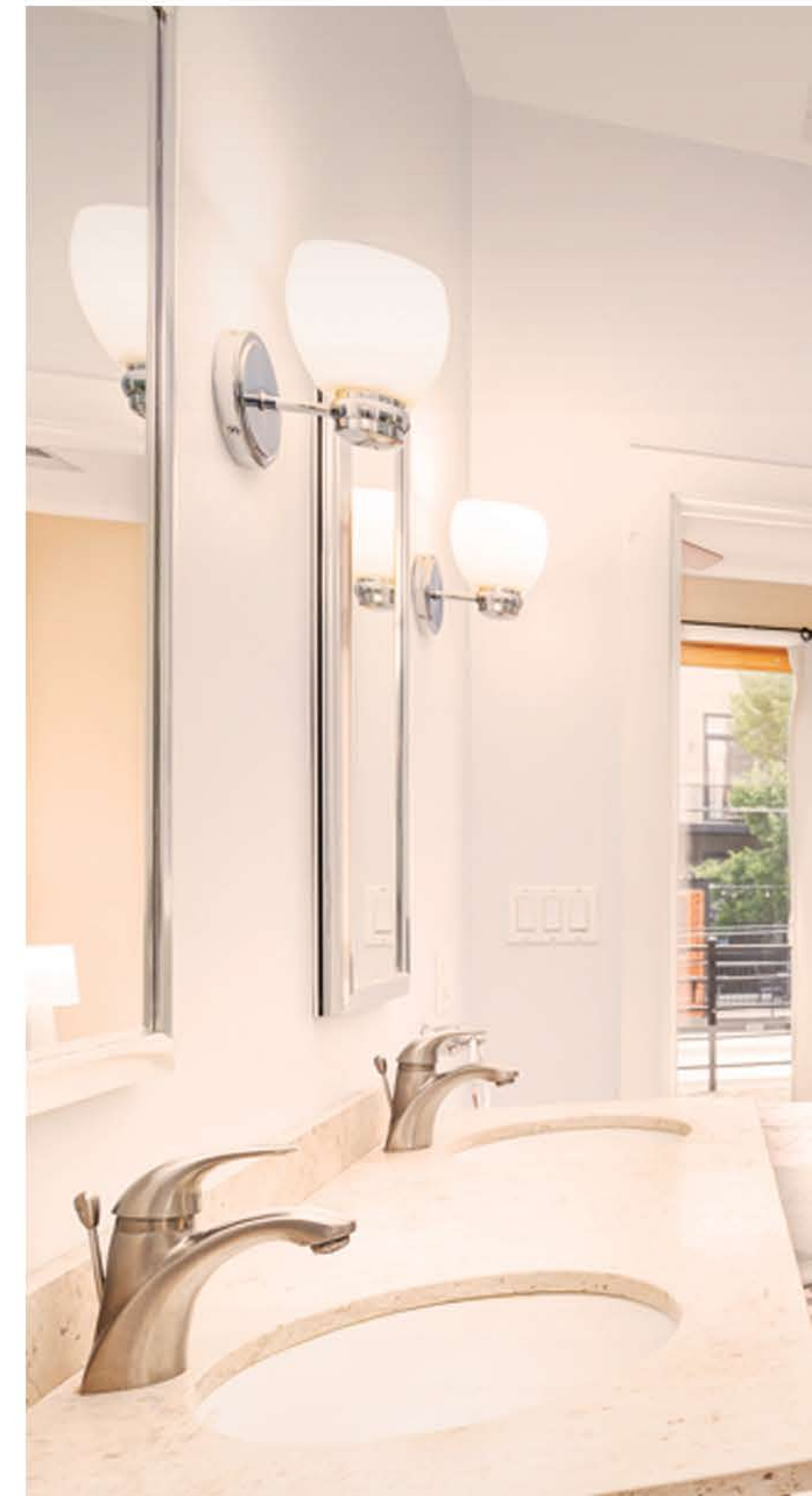
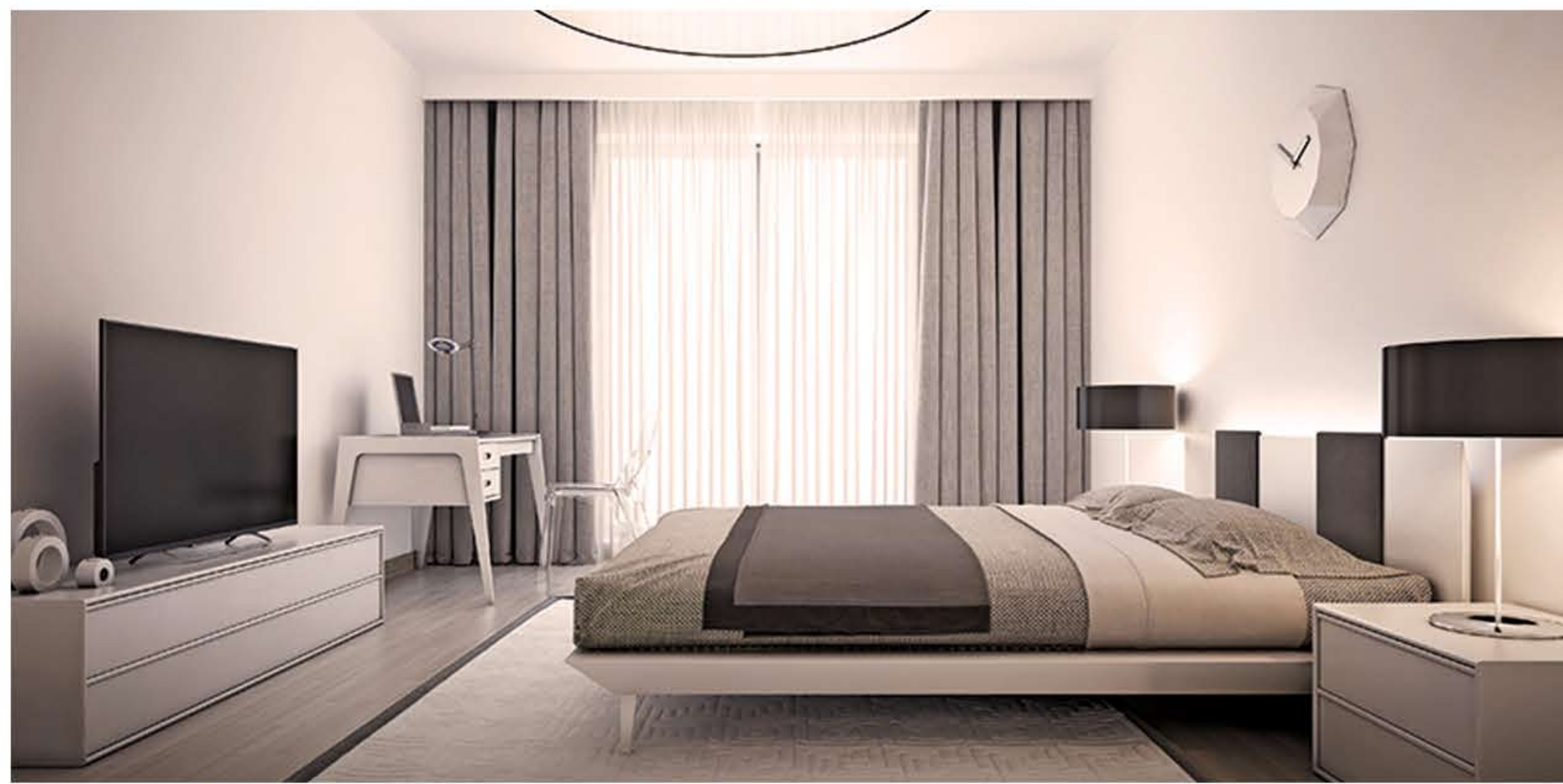


# SPACES THAT REFLECT YOUR SIGNATURE LIVING



## Apartment Specifications

- Glass Railing, SS Finish Handrail and Anti-skid Floor
- Good Quality Main Door Frames
- Video Door Phone with Speaker Facility
- Marble Counter / Co-Ordinated Ceramic Tiles in Bathrooms
- Granite Sills in Bathroom Doors and Windows
- Designer Fittings on the Main Door
- Superior Quality Plumbing, Fittings and Sanitary ware







# DISCOVER SIGNATURE-CLASS FEATURES & FACILITIES



## Tower Features & Common Facilities



Vehicle Parking Spaces in 3 Basements

Advanced Security and  
24x7 CCTV Surveillance

High Speed Automatic Elevators

Rain Water Harvesting Systems

State Of The Art Fire Fighting Systems  
As Per Defined Safety Norms

Jain Derasar/ Temple for  
spiritual enlightenment nearby premise.

Paved Open Compound

Bore Well Water For Flushing  
And Gardening

Power Saving Led Light Fittings  
In All Common Areas, Including Lobbies

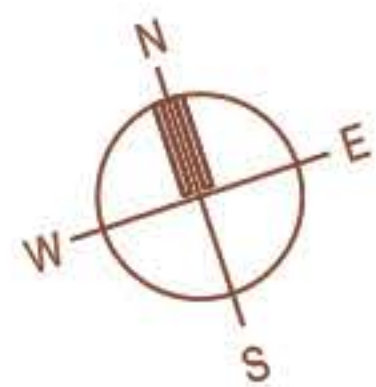




# GROUND FLOOR PLAN



13.40 M. WIDE ROAD

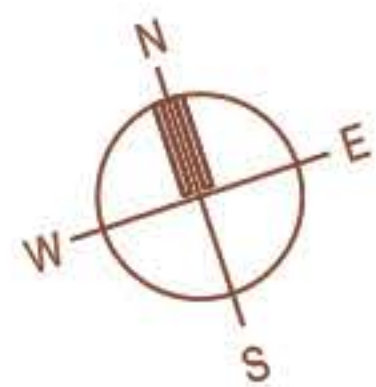




# MEZZANINE FLOOR PLAN



13.40 M. WIDE ROAD



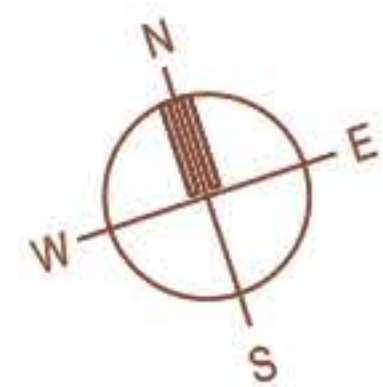
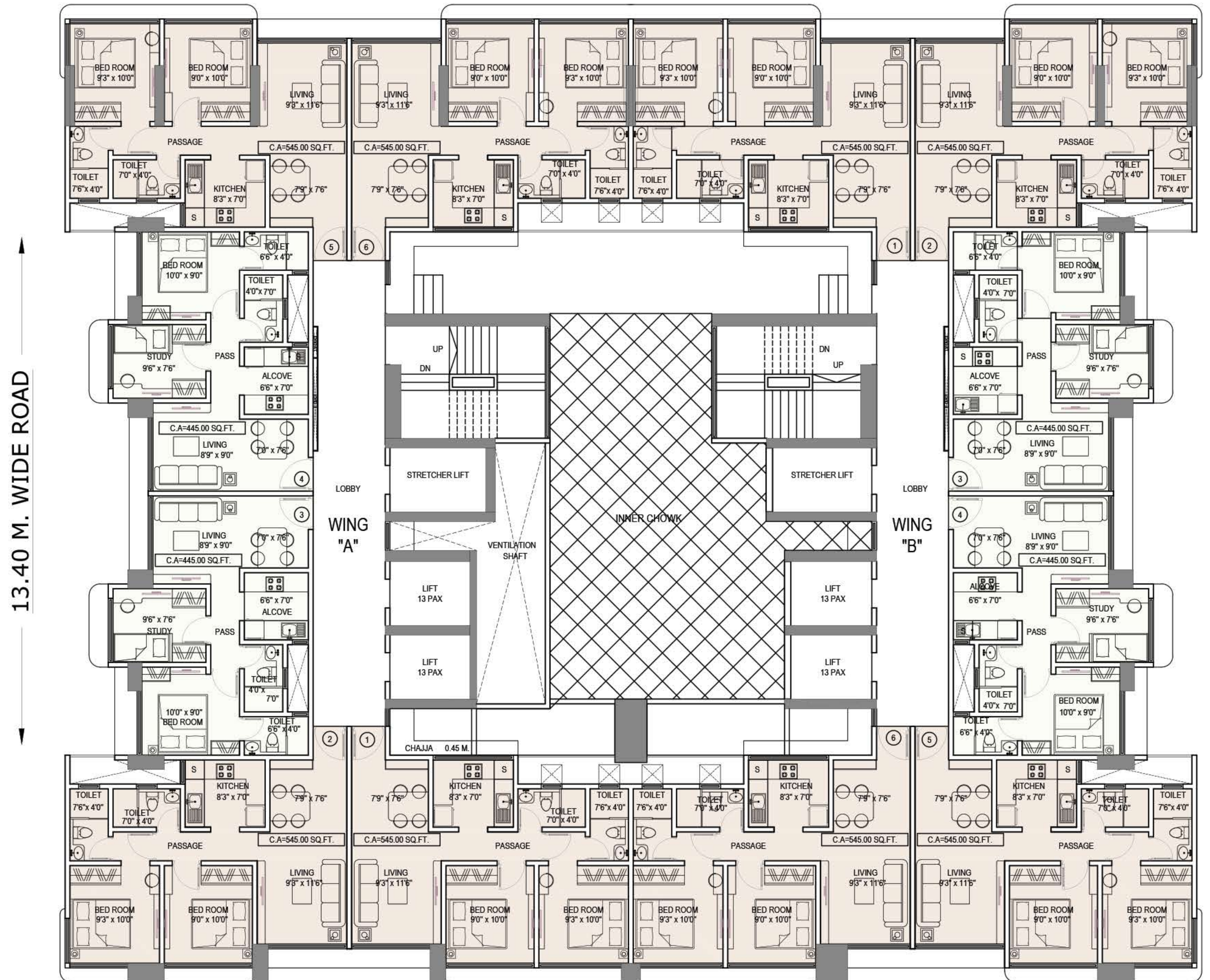


# 1ST FLOOR PLAN



## WING A & B

RERA Areas	545 Sq.ft.	445 Sq.ft.
Flat Nos.	1, 2, 5 & 6	3 & 4





# A NAME YOU CAN TRUST



**TRIUMPH**  
VENTURES

Triumph Ventures is the brainchild of Mr. Rajiv Anant Shah, who is a part of the Chintamani Group, a diversified conglomerate with interests in real estate, textiles and film studios.

Over the years, the group has developed more than 5 Lakh square feet of qualitative commercial & residential landmarks in the prime locations of Zaveri Bazaar, Hughes Road, Mahim, Andheri and Goregaon. Developing 600+ residences across various premium ongoing projects and over 6.5 Lakh square feet of projects under construction, the group is offering quality par excellence.

Triumph Ventures has also undertaken the redevelopment of plot adjoining to this project under the name 'Siddhivinayak', which caters to 2 BHK homes ranging from 625 to 809 square feet of space.

Both projects combined, will change the face and the skyline of Rajendra Nagar while upgrading the lifestyle of residents with their space design and modern amenities.

Triumph Group envisages in creating projects of impeccable quality and efficient design, which would add value to the lifestyle of a buyer.

## Omkareshwar Team:

- ◆ Design Architect:  
**M/S Irani & Associates**
- ◆ MEP Consultants:  
**M/S ECO MEP Consultants**

- ◆ BMC Architect:  
**M/S Ellora Project Consultants**
- ◆ Legal Advisor:  
**M/S Wadia Ghandy & CO.**

- ◆ RCC Consultants:  
**M/S JW Consultants LLP**

## Completed Projects

**Padma Nagar**  
Andheri - East

**BPL House**  
Mahim - West

**Chintamani Plaza**  
Andheri - East

**Chintamani Heritage**  
Andheri - East

**Chintamani Avenue**  
Goregaon - East

**Chintamani Classique**  
Goregaon - East

**Chintamani Gold Plaza**  
Zaveri Bazaar

**The South Bay**  
South Mumbai

## Upcoming Projects

**Siddhivinayak**  
Borivali - East

**Aryavrat**  
Dadar - West



A PROJECT BY

# TRIUMPH VENTURES

Omkareshwar: Rajendra Nagar, Borivali - East, Mumbai 400 066.

W: [www.omkareshwarchsl.com](http://www.omkareshwarchsl.com) | M: +91 87677 99000

Rera No. P5180003302

Project Approved & Funded By  
Aditya Birla Housing Finance Limited

