



HUMMING BIRD

FLUTTER INTO PARADISE



WHERE LIFE'S SWEET
NECTAR ABOUNDS



BRAVING THE ELEMENTS



IT'S HERE WHERE THE ELEMENTS ARE IN HARMONY WITH YOU

In this earth, the elements are all pervading and is often at odds with our desire to create convenient living spaces. However, we have managed to tame and even assimilate our living spaces with them, thus ensuring that it's possible to live closely and in harmony with nature while still enjoying the conveniences of a great life.



LIGHTING & VENTILATION IN SPADES

With no common walls between apartments and ample space inside, there is tremendous space for natural light and air to enter. This, of course, means reduced spending on artificial lighting and air conditioning i.e. smaller electric bills.



FLORA THAT PUMPS GOOD AIR

Several layers of trees and parks with abundant flora adorn our space; and as a consequence, you'll be able to enjoy an atmosphere that is rich in good air. Let your mind be elated!



GREENERY ENVELOPES THE LAND

Perhaps even more enriching is the fact that the project is surrounded by dense greenery, which gives the land a natural beauty that is perhaps even more alluring than the beauty inside



GOING BEYOND TO SAVE WATER

Carrying on with our ethos of being eco-friendly, and assimilating the elements, we've made sure that each drop is utilised as much as possible. This is why we've went beyond the average and integrated a grey water treatment plant into our structures. It is an initiative of ours to take care of you and the environment.



LUSH FLORA THAT SURROUNDS GARDENS & GREENERY



IT'S HERE WHERE THE BODY OF NATURE INTERTWINES WITH YOURS

When considering the lay of the land, we envisioned a place where greenery dominates most of the space. We wanted to instil a beauty that will enrapture the minds and create a semblance of paradise.

This led to our architects and designers coming up with a vision that weaves the landscape into the lives of those who live here.





THREE LAYERS OF TREES

Contrasting against a mundane landscape, will be these three lush layers of trees lining the entrance. They will act as a blanket of greenery and freshness, shielding the land from dust coating, as you slowly come towards the gate of the enclosure.



A RIVER AND ITS BANK

The road that leads you inside is shaped like a river, wedged in the middle by a narrow island of trees, with a bank of paved tracks on either side. It'll be a splendid feeling of peace and modernity that will rush over you.



RETAINED THE NATURAL TERRAIN

An aesthetic priority of ours was to make sure that land seemed as if it sprouted from the earth itself. So we chose to retain the natural terrain to enhance the beauty.



BONSAI GARDEN

A bonsai is a testament to human perseverance and creativity. Moreover, it evokes a pleasant feeling on those who witness the miniature trees. Experience the soothing aura.

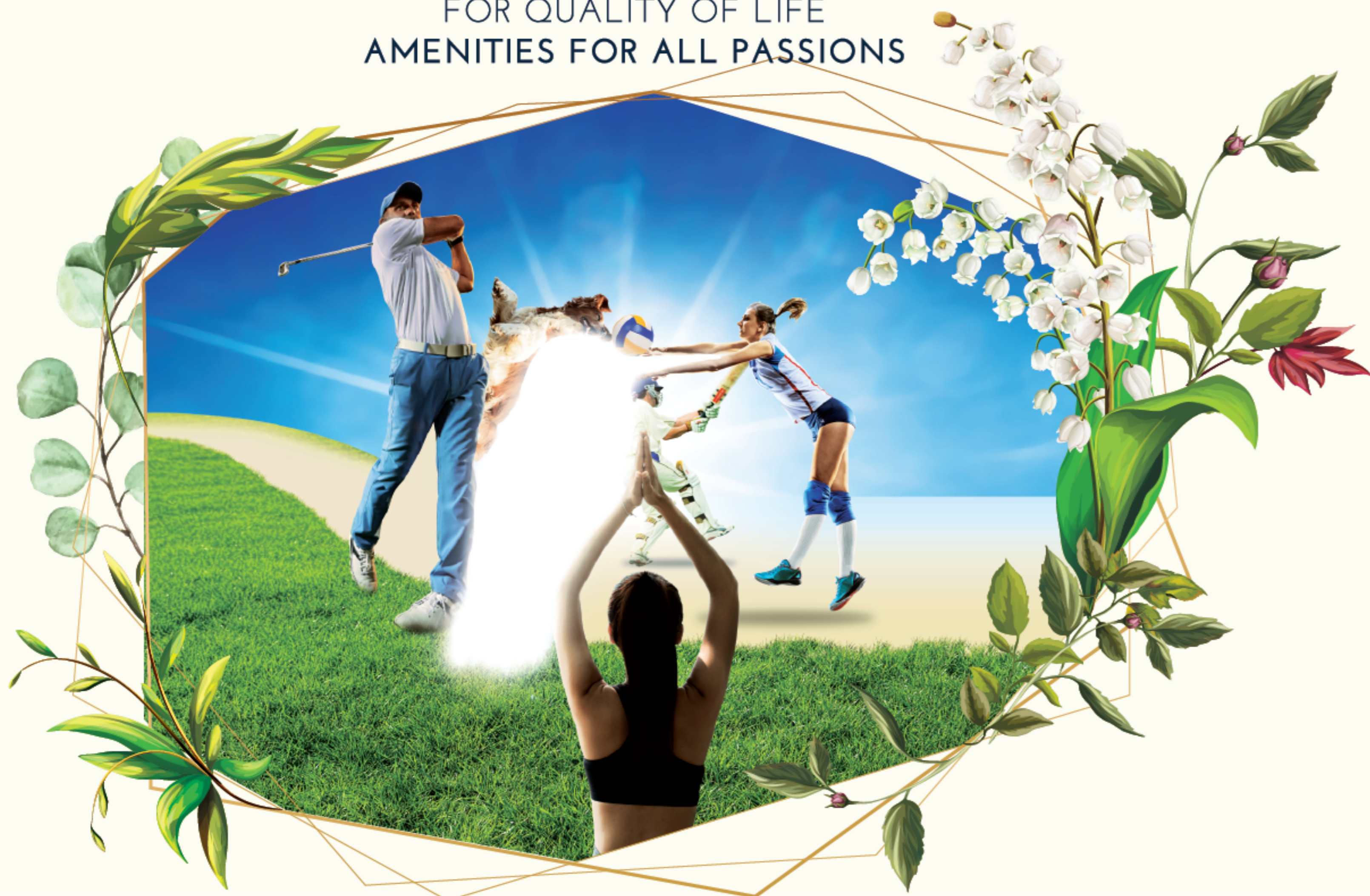


AROMA GARDEN

If you have quite been fulfilled with the aura of the bonsai garden, then what you can do, is wander into the Aroma one, where you can indulge your olfactory senses.

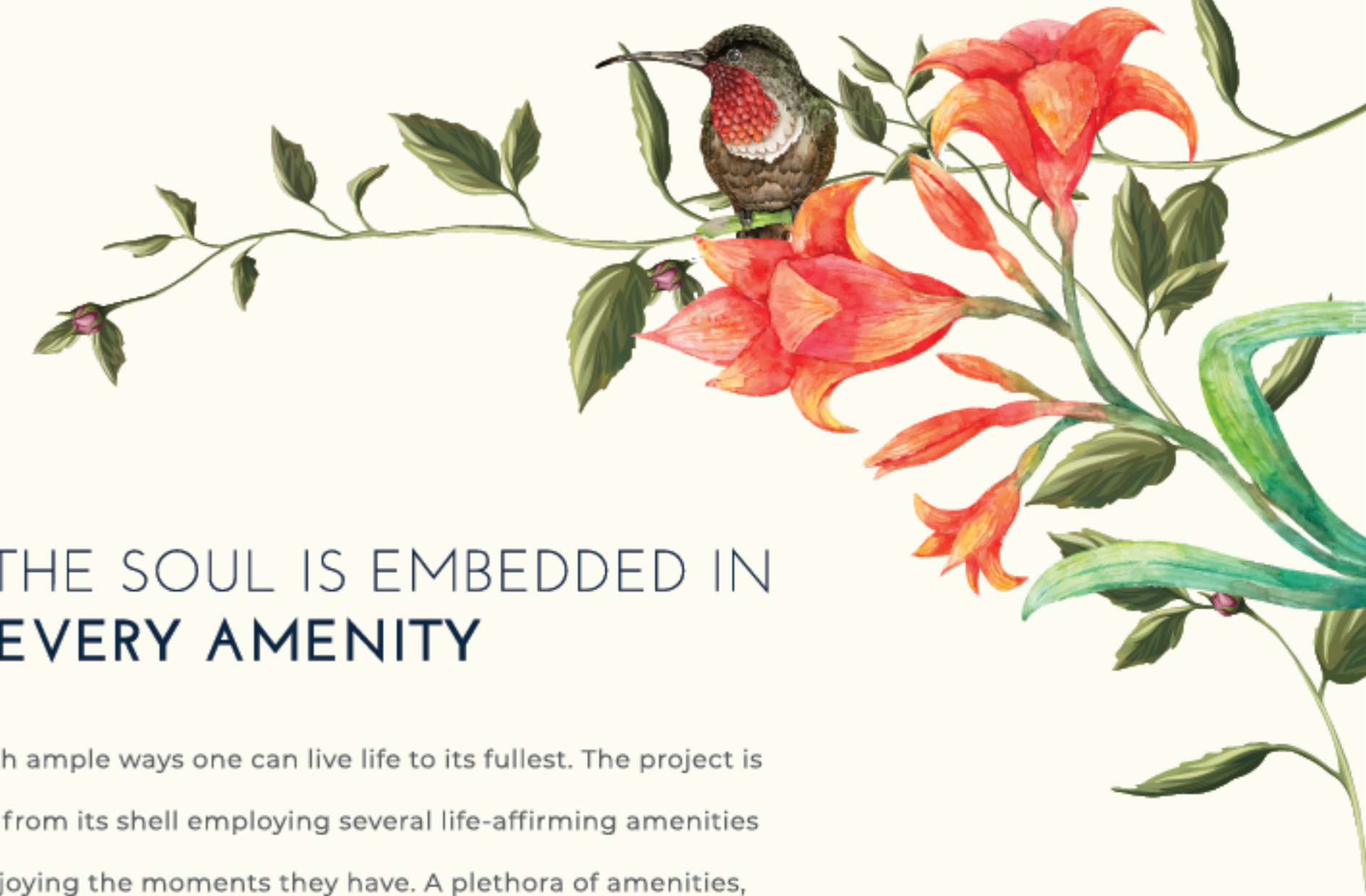


FOR QUALITY OF LIFE
AMENITIES FOR ALL PASSIONS



IT'S HERE THE SOUL IS EMBEDDED IN
EVERY AMENITY

Here, we presented space with ample ways one can live life to its fullest. The project is planned to extricate the soul from its shell employing several life-affirming amenities that will lead people into enjoying the moments they have. A plethora of amenities, functional in more than one ways, are placed all along with the project to get everyone to come together and enjoy life.





PARTY LAWN

A hub of activities, the party lawn is a very versatile area that changes its function according to the time of the day. Parties, barbecues, conferences, picnics; indeed, anything that makes people come together for any cause can be done here.



WALKWAYS

Paved on the sides are three dedicated paths where you can walk, tread or jog - the perfect way to get your blood pumping. Whether it is for your evening routine or the morning one, the walkways will have you breathing the good air that shrouds the land, to complement the exercise and get your body fine-tuned to proper health.



AMPHITHEATRE

Perhaps the spot to come together on occasion to celebrate something grand, the amphitheatre is the quintessential amenity for a euphoric time. Shaped like a bowl, this is where the entire community can congregate, not dissimilar to church though not so holy, it is, however, a great place to strengthen the bonds.



GOLF POINT

Quite the perfect spot for one to go and enjoy a most relaxing time. This wide patch of rolling grasslands is ideal to have a peaceful time playing golf. Tread across the ground, putting in shots with ease, and even go for a rare birdie or the famous hole in one.



PETS PARK

Of course, we know that your pets are precious, that's why we have space completely dedicated to hosting them. It is a place where they can be themselves and have their best instinct to come out to the surface. It has all the right ingredients for your pets to be happy - definitely a pet heaven.



ADVENTURE ZONE

A special enclave for kids to have fun in a more exhilarating manner - this zone will make them live their free time like little daredevils. There are many activities here that would make them feel like they're living their life to the fullest, including the quite daring Climbing Wall, which itself is going to have them feel they've climbed a mountain.



OPEN GYM

This is a place for those who exercise to come out with their muscles blazing and have it toned; but at the same time get fresh air. All those fitness enthusiasts can now come together to bond over their shared passion for maintaining a healthy body. This is how friendships and relationships can be forged, when passions collide.



BUSINESS CENTRE

If you are looking at staying at home for your work, then you need not stay in bed and try to work - it could be counterproductive. We have in our buildings, a dedicated business centre with ample facilities.



MOVIE THEATRE

Are you here trying to get the best out of your time, but can't find the time to enjoy the simplest pleasures? Well, for instance, you want to watch that movie on the big screen, but its not playing nearby. However here's where we can help you by providing you with your very own movie theatre that you can watch with your friends and family.



GUEST ROOM

When the guests come over in short notice, and you aren't ready to give them a good time, then perhaps the best way to offer them a nice time is to have them come over to the Club House' Guest Room. Here, the accommodations are done perfectly for them to have a pleasant time so that they remember their visit fondly.



LIBRARY

There is a bibliophile in you, and he/she is always craving for the best books to read when you find yourself with ample leisure time. For those who want to get their fix of books, the library at Hummingbird is stocked with the right books to titillate your cerebral nerves. Here, we have, provided an ambience for a good reading.



CLIMBING PARK

Are you a monkey? No, but here you can climb like one!



SWIMMING POOL

Where you can feel your body float on something blue



OPEN GYM

Here you can find the adults doing their hardest work of the day



SAND PIT

Built castles, cities and whole countries with yellow dust



PET FRIENDLY ZONE

Even your kitties and puppies need their private time



GOLF POINT

Swing! But not with your bat, instead use a club



KIDS PLAY AREA

Come here kids when you want to have good fun with friends



RECREATION LOUNGE

Come into the loving embrace of mother nature to unwind and relax in peace



BONSAI GARDEN

These are not plants on a pot, but little trees!



MEDITATION CENTER

This is a place for peace and clearing your minds.



AROMA GARDEN

As you walk through here, you'll breathe in nature's perfumes.



AMPHITHEATRE

A place where you can live your dreams in front of everyone



MULTI PURPOSE LAWN

One place, many purposes - this is for everyone



SKATING RINK

Wear your boots that rolls or get a board for this one



CRICKET PRACTICE PITCH

Not India's national game, but our favourite game



VOLLEYBALL COURT

Jump, dive and volley; this is a game of few touches.



BADMINTON COURT

If you're tall and like to smash, you'll love this one.



SENIOR CITIZEN SITTING

Your grandmas and grandpas will love this spot



MADE TO LAST A LIFETIME
SPANNING GENERATIONS



IT'S HERE, WHERE LIFE FLOURISHES
TILL YOUR GOLDEN YEARS

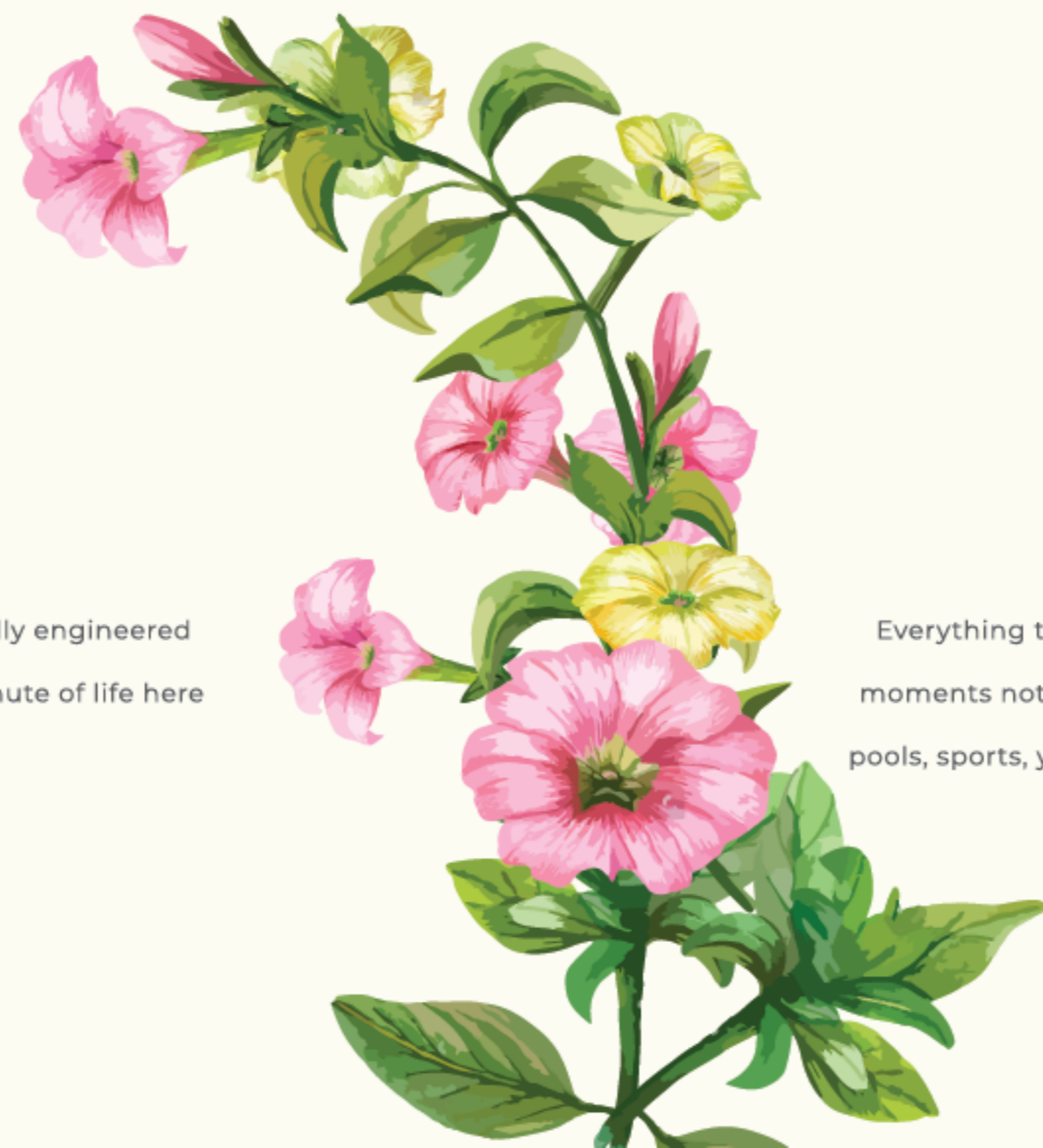
Once you are settled down here, you will feel like not wanting to go anywhere else, for everything that you need, and everything that you were looking in a home where you can nurture a family for generations, is right here. With a holistic living space and features at your disposal, this is the ideal location for you to raise your kids. You'll get to see them grow up, and will also bear witness the nurturing of your grandchildren as life flourishes till your golden years.





HOLISTIC LIVING

It's here that you will feel life operating in synergy with everything else. Every feature of the project has been specially engineered so that it works in tandem with all the others. There is a seamless intertwining of nature, structures, and life. One minute of life here will have you enriching the rest of it so that you may endure for a long time.



SELF- SUSTAINING

Everything that has been made, has been done so that any inhabitant can get what they require at a moments notice. Multiple amenities will serve the purpose of those who want to live a good life - gyms, pools, sports, yoga, parks and even office spaces. The proximity to emergency services also complements the self-sustaining nature.

IMPENETRABLE CONSTRUCTION
STRENGTH OF MATERIAL



IT'S HERE WHERE THE HEART IS
BUILT TO LAST FOREVER

When making a good structure, you always start with a strong foundation, because that is the heart of the project. We wanted to make ours more than a typical living space so we made it as a comfy fortress - with no common walls, easy accessibility and grand balconies but also with an impenetrable security system.





LIFTS & STAIRCASES

Accessibility is key, that's why we've made lifts that function many roles. There's one which can hold up to ten people and a stretcher lift that makes this easy for emergencies in each floor. Besides, normal stairs there's one for a quick exit in case of a fire. This ensures safety and accessibility for everyone.



NO COMMON WALLS

Sharing the same wall would be an immensely annoying prospect - uninvited conversations from other families, noises at an untimely hour; it is most difficult. Here at Hummingbird, by removing the common walls, you get to enjoy the privacy of your homes without anyone else disturbing you.



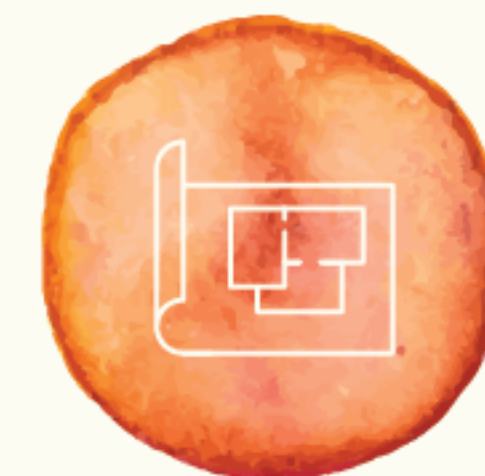
BALCONIES TO BE ADORED

Our balconies have been made to trump over all the others for it was our imperative to make them into as big and beautiful as possible. Similarly, the height of our balcony would be double of that a normal ones.



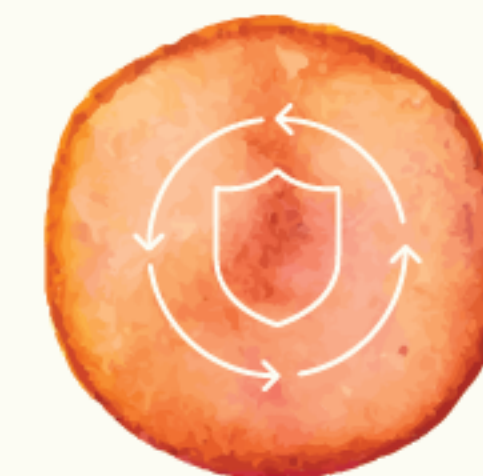
GIVING WIDER VIEWS

When there is a wider view, it is better. We've made sure to give you a wider view of the world, and have done just that by making windows and doors larger. Moreover, with wider views, there is greater sunlight entry into the homes. The result of this enhancement is a home that is full of fresh air and sunlight.



5 UNITS PER FLOOR

With 5 units spread across each floor, we are reaffirming our commitment to sustainability. There is ample space for each unit as well as a 360 view in each home to observe the glorious views outside. The innate design of the building accentuates the aesthetic beauty of the structure like flower petals opening up.



3 TIER SECURITY

Do not fret over whether or not you are safe on the premises. We've ensured that the entirety of it is secured with an impenetrable 3 tier security. You can sleep soundly without any worries.





LUSH FLORA TO DAZZLE YOUR HOME

Apartments adorned with terrace gardens are an extremely beautiful piece of work - hence the rarity. However, here at Hummingbird, there are 40 such apartments. These stunning pieces of botany are a testament to how much we care about the ambience that is embedded in apartment. Our terrace gardens are a space for you to get lost in the beauty and thought, a therapy for those who want to get rid of their stressful days.





A SKYLINE CLOSEST TO NATURE

Rising above a lush green corner of Whitefield are three magnificent structures resonating with an aura of pristine beauty. Hummingbird is a dazzling residential project that seamlessly marries nature and technology. Sprawling green covers with abundant natural light and ventilation surrounds these towers of ivory that emanate a radiance in the skyline. Close to the city, yet distant from malicious noise and pollution, these structures are a living space that give you true peace of mind.



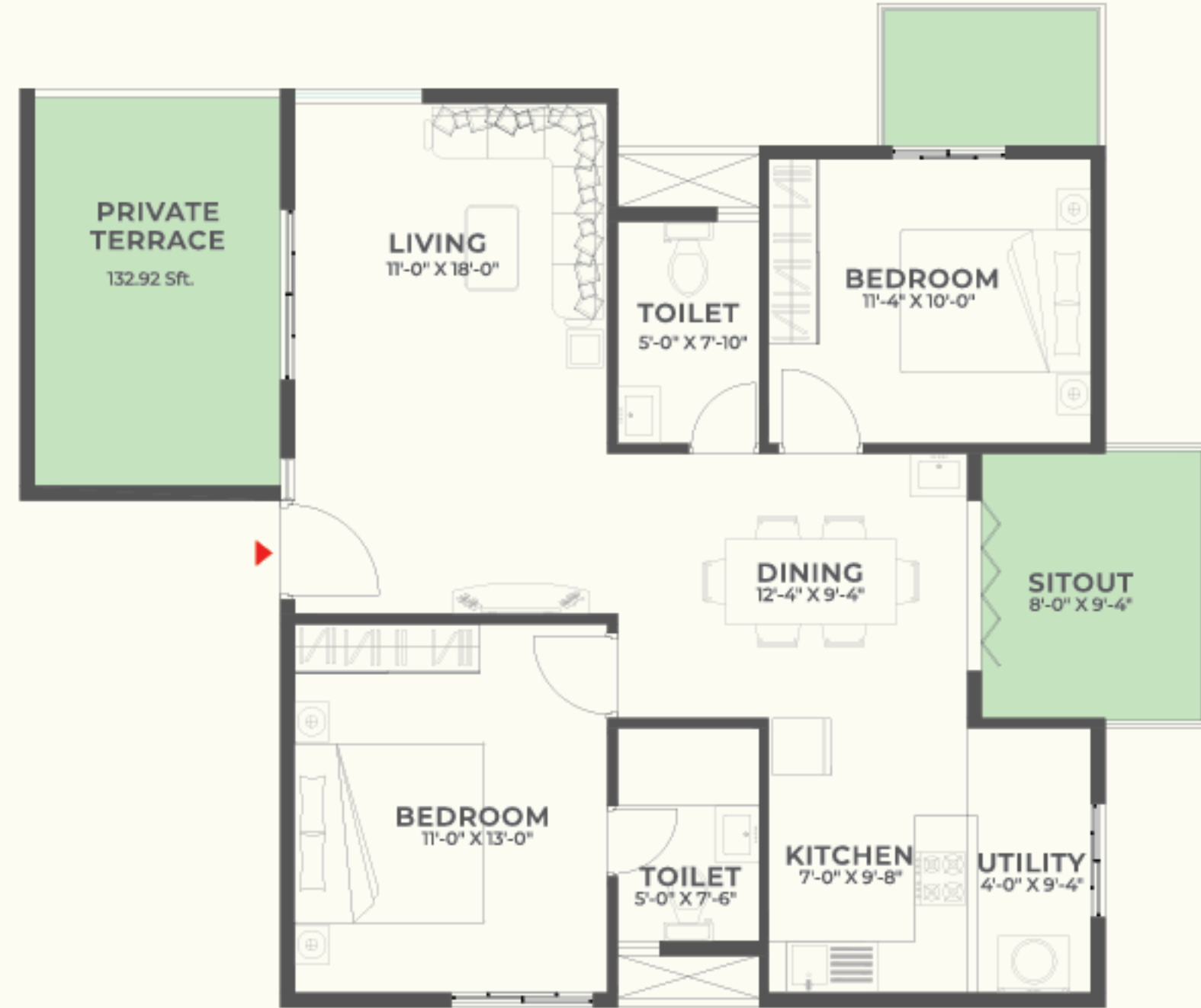


CONTOURS OF PERFECTION

All the rooms have been planned distinctly with 11 different styles of plans for the 2 BHK, 2 BHK + Study, 3 BHK and Garden homes. Rooms have been made so that its utility is enhanced, for eg: 'wet' and 'dry' section for the kitchen. All of our rooms are having larger balconies, doors and windows. One of the more special features are the bay windows. Each room is special in its own way.



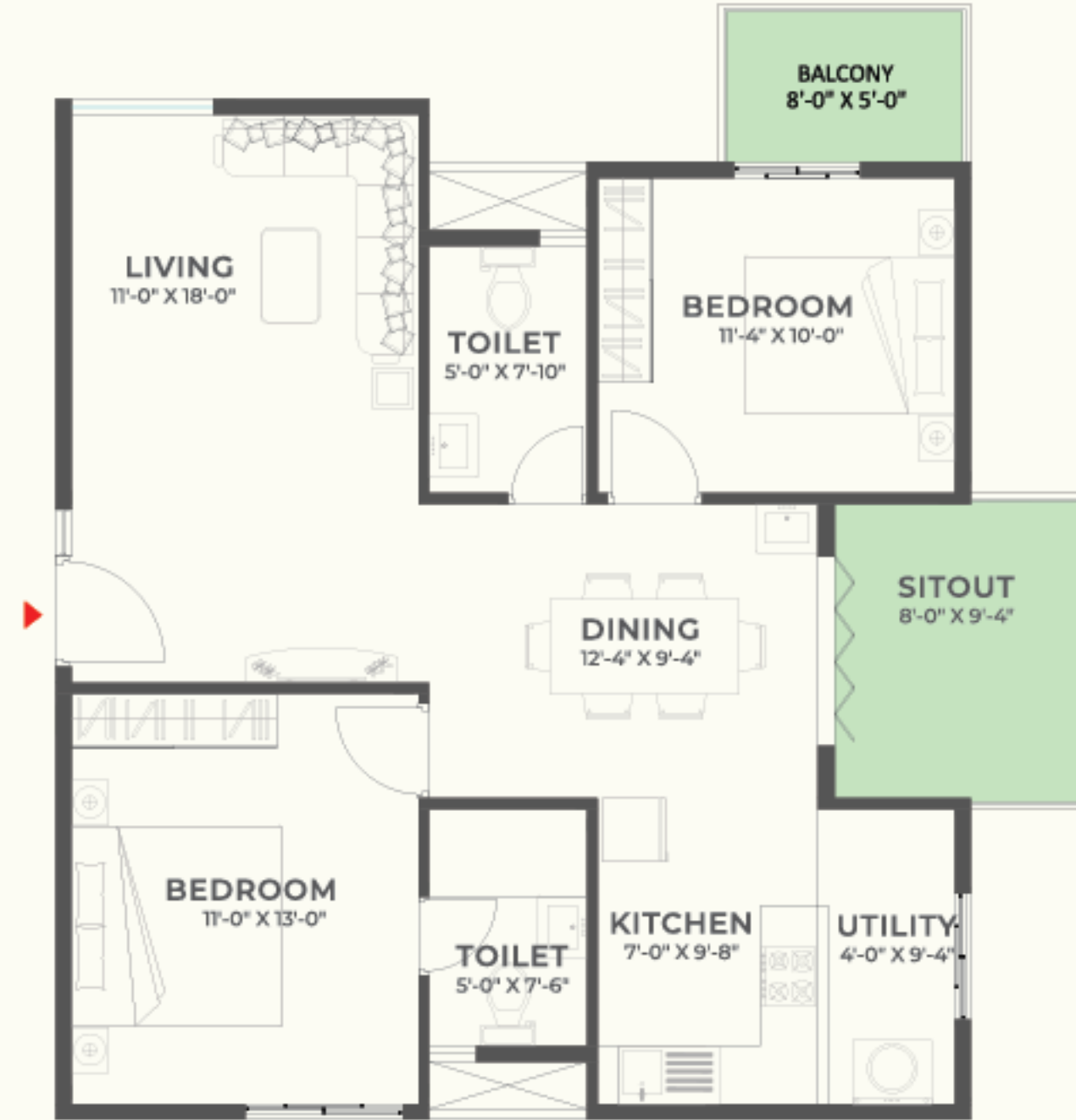
FLOOR PLAN
2 BHK
WEST FACING



Areas in Sft.

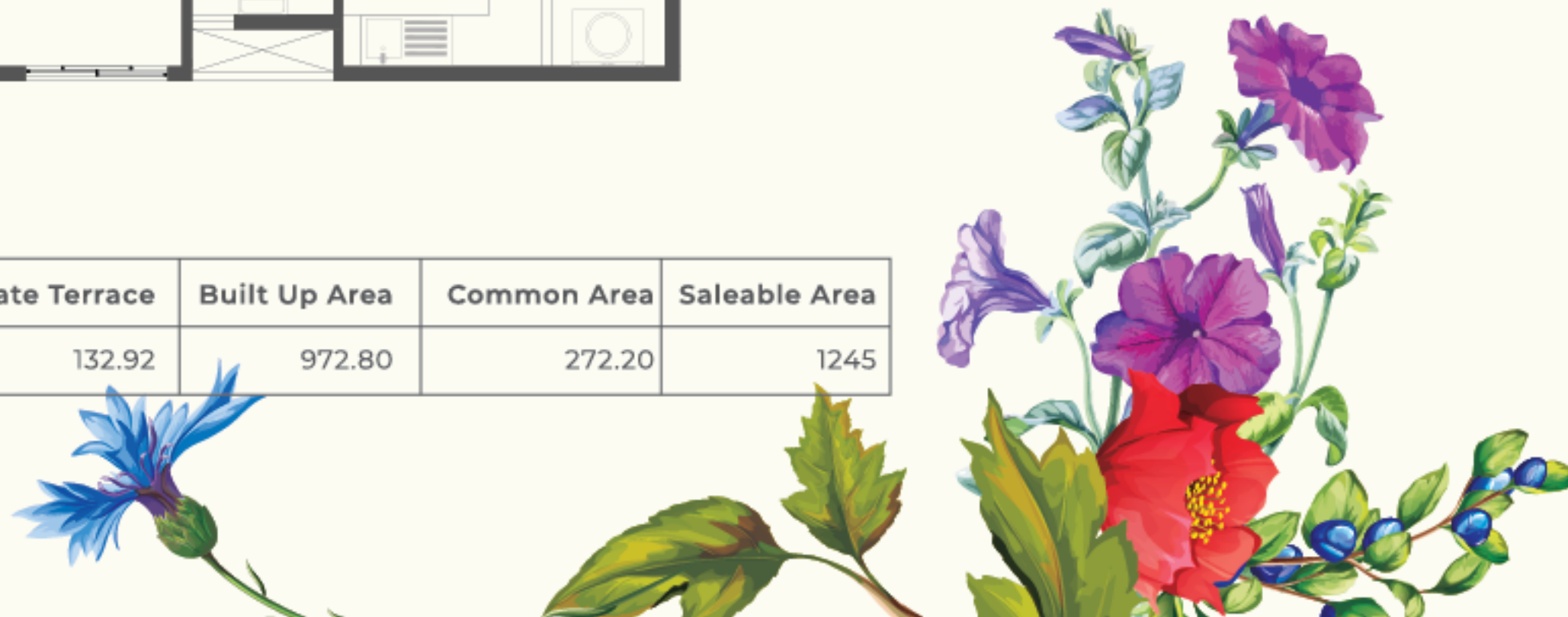
Carpet Area	Balcony & Utility Area	Private Terrace	Built Up Area	Common Area	Saleable Area
789.11	126.61	132.92	972.80	272.20	1245

FLOOR PLAN
2 BHK
WEST FACING

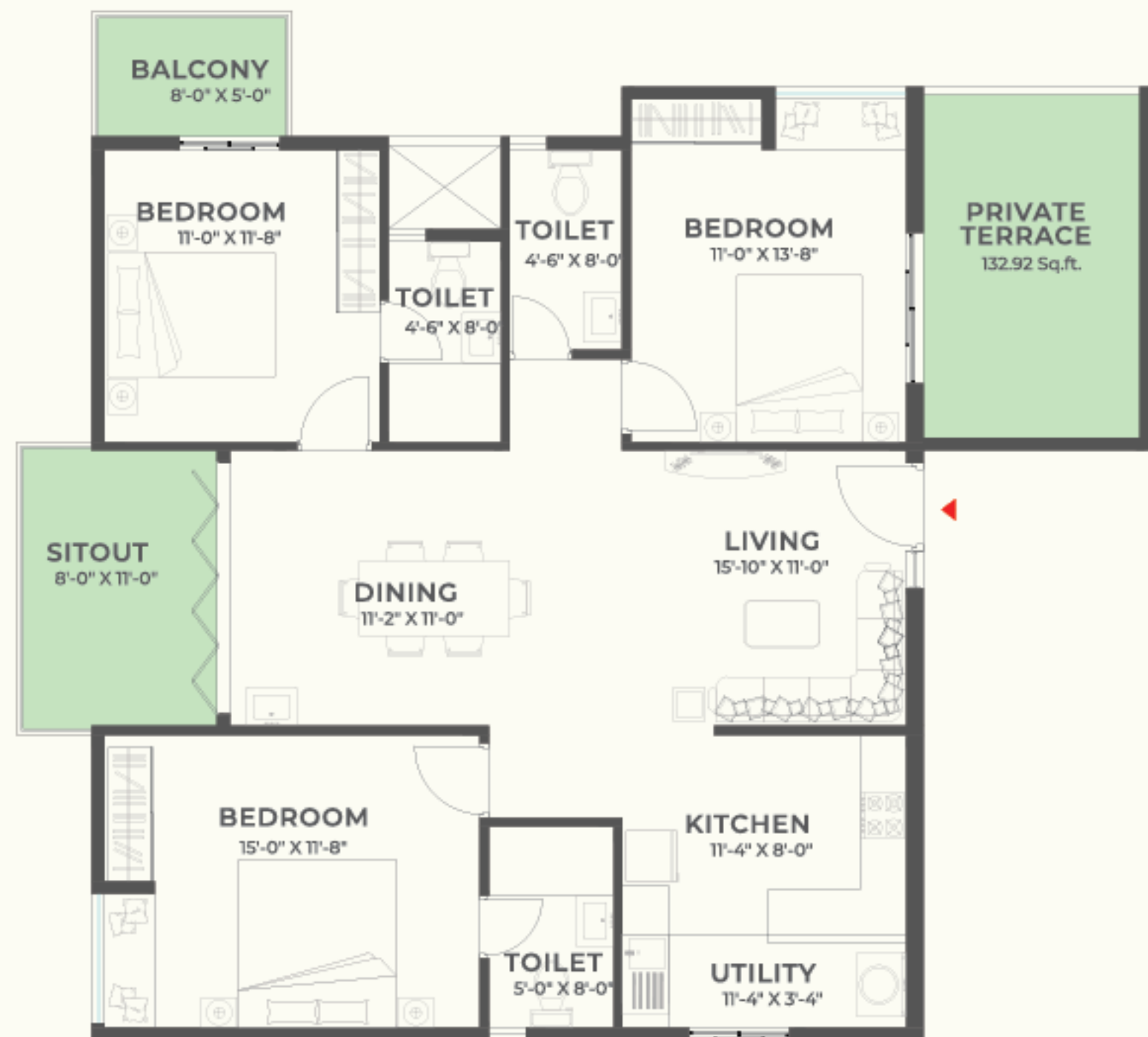


Areas in Sft.

Carpet Area	Balcony & Utility Area	Private Terrace	Built Up Area	Common Area	Saleable Area
789.11	126.61	0.00	972.19	272.19	1245



FLOOR PLAN
3 BHK
EAST FACING

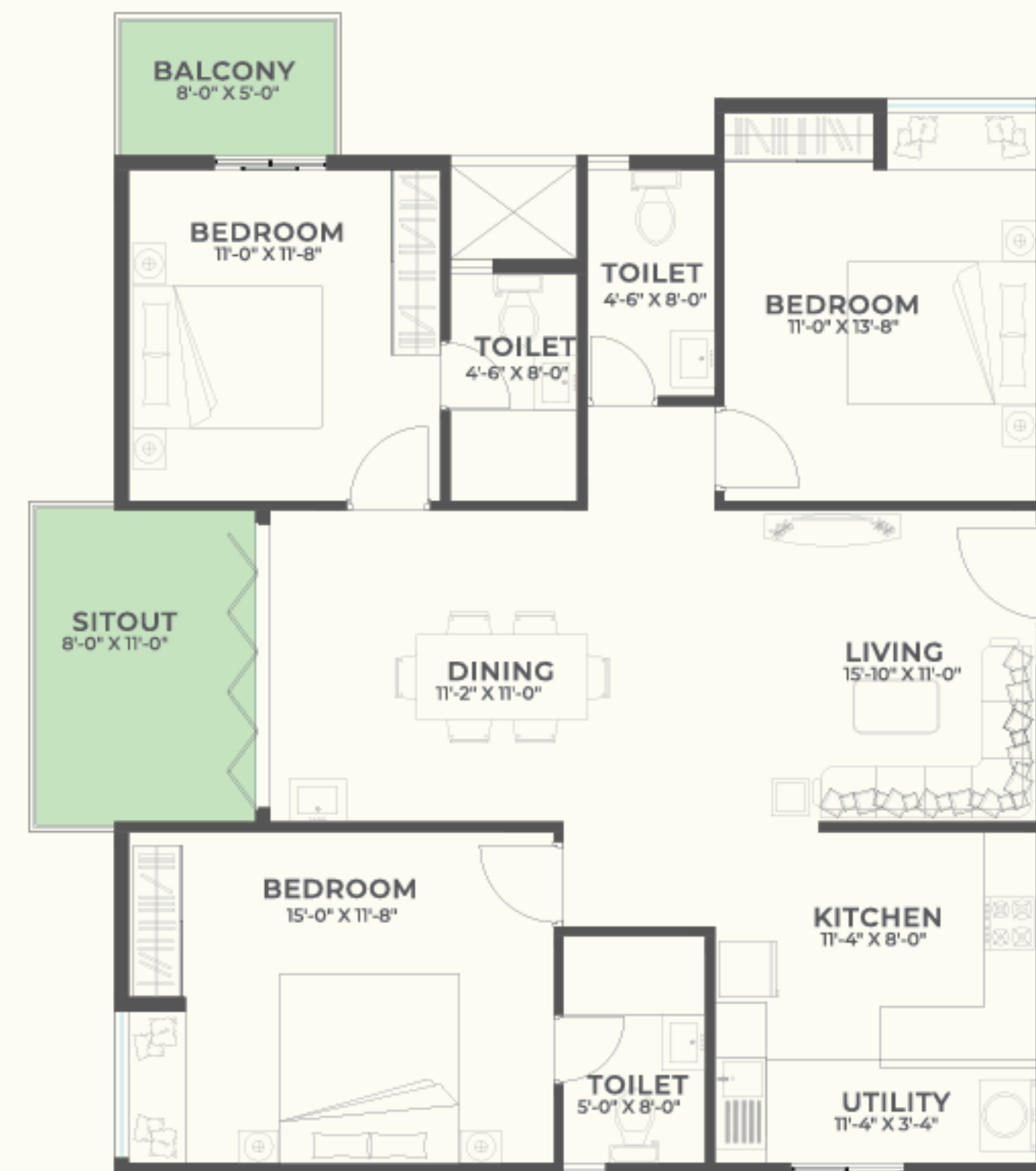


Areas in Sft.

Carpet Area	Balcony & Utility Area	Private Terrace	Built Up Area	Common Area	Saleable Area
1077.22	142.08	132.92	128.908	360.92	1650



FLOOR PLAN
3 BHK
EAST FACING

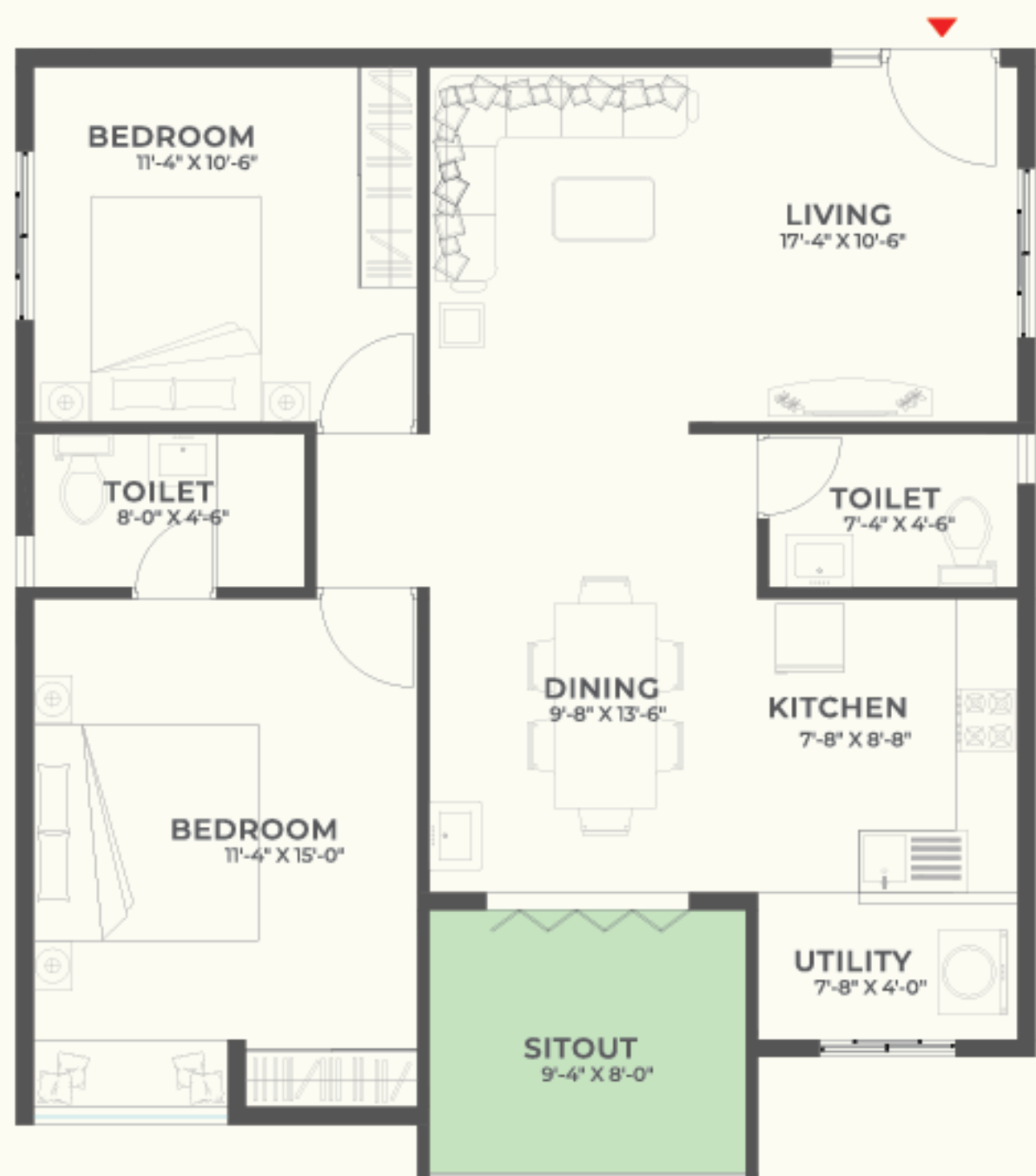


Areas in Sft.

Carpet Area	Balcony & Utility Area	Private Terrace	Built Up Area	Common Area	Saleable Area
1077.22	142.08	0.00	1289.08	360.92	1650



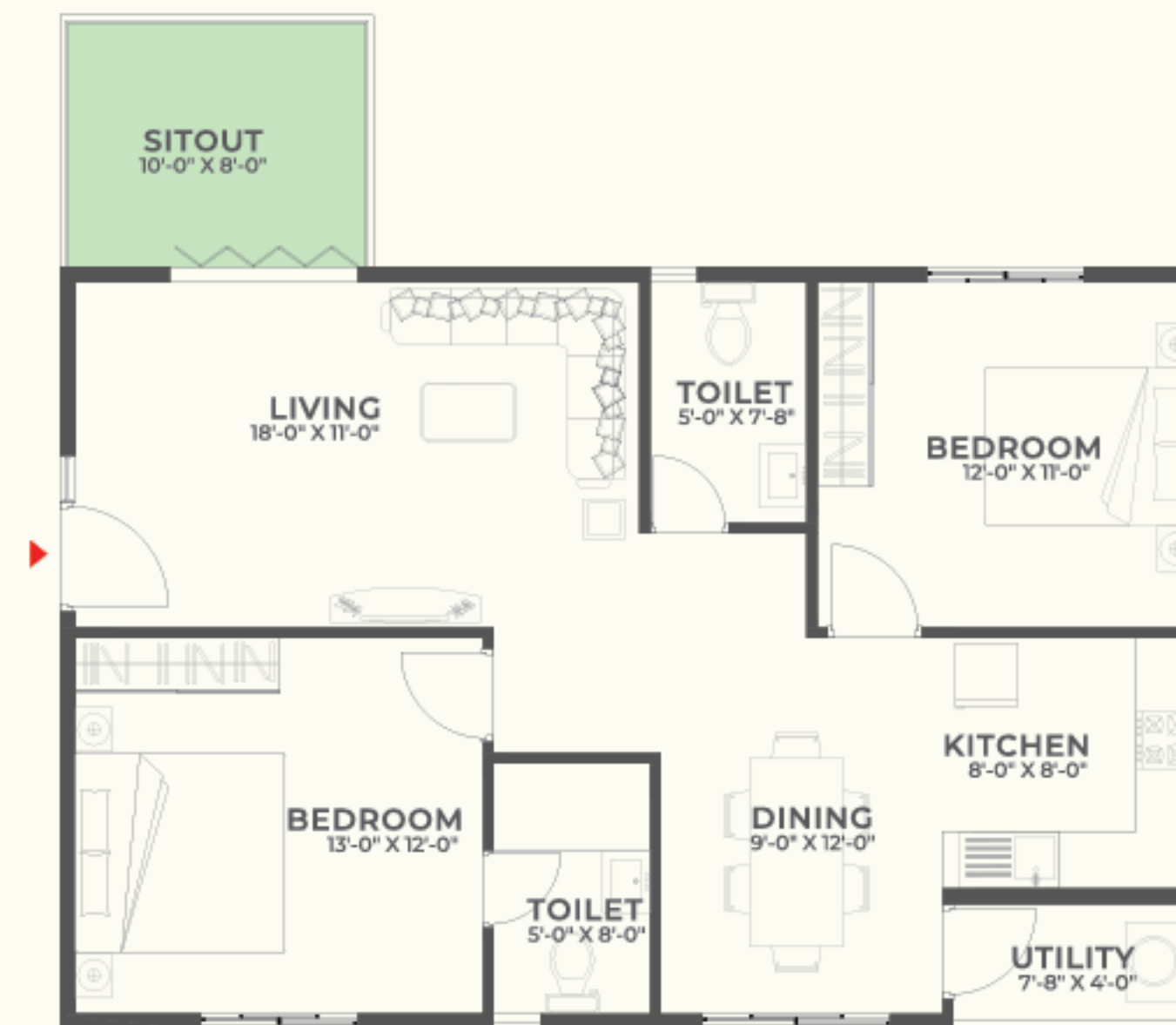
FLOOR PLAN
2 BHK
NORTH FACING



Areas in Sft.

Carpet Area	Balcony & Utility Area	Private Terrace	Built Up Area	Common Area	Saleable Area
812.42	78.42	0.00	950.33	264.67	1215

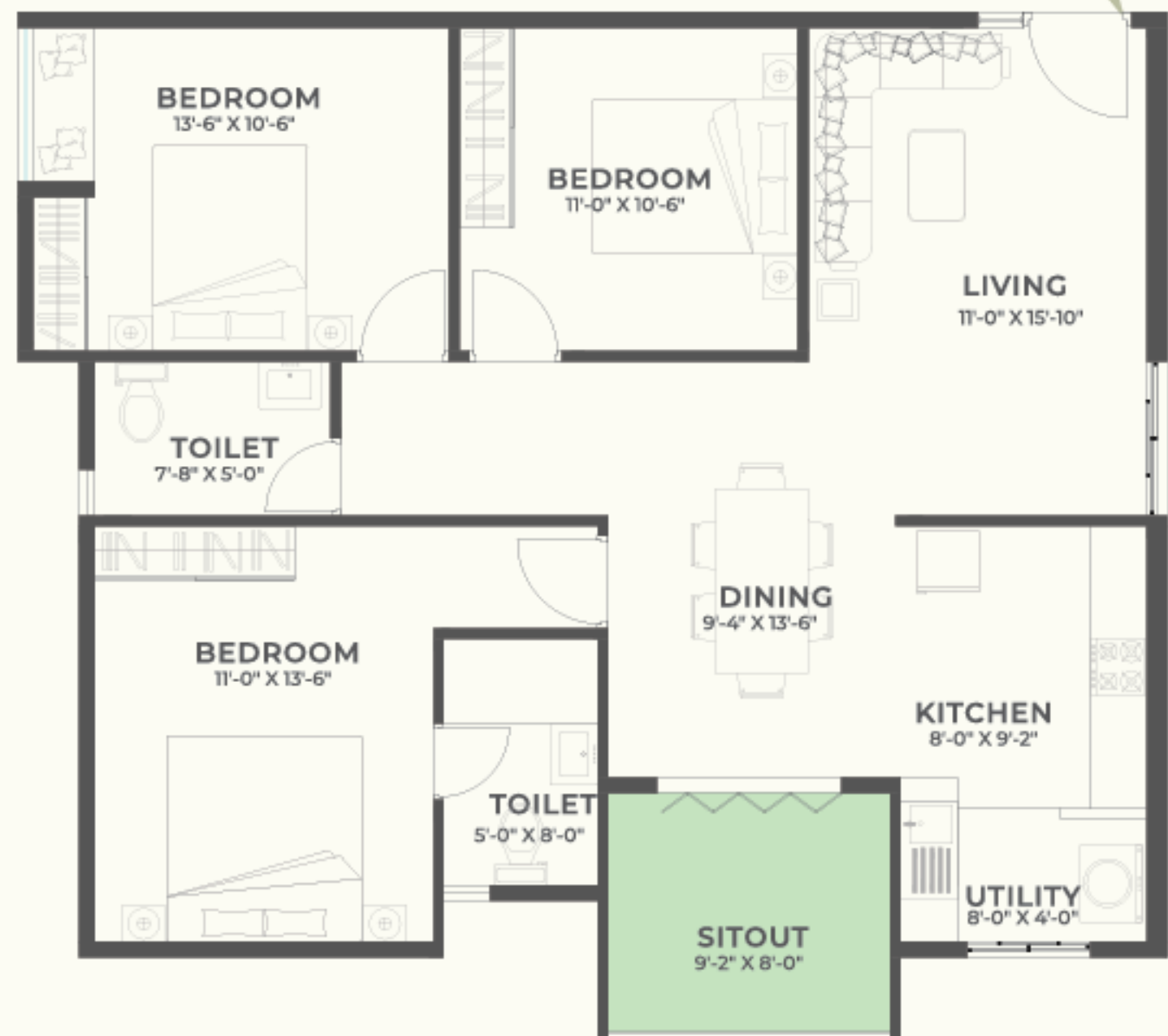
FLOOR PLAN
2 BHK
WEST FACING



Areas in Sft.

Carpet Area	Balcony & Utility Area	Private Terrace	Built Up Area	Common Area	Saleable Area
801.97	114.67	0.00	972.22	272.78	1245

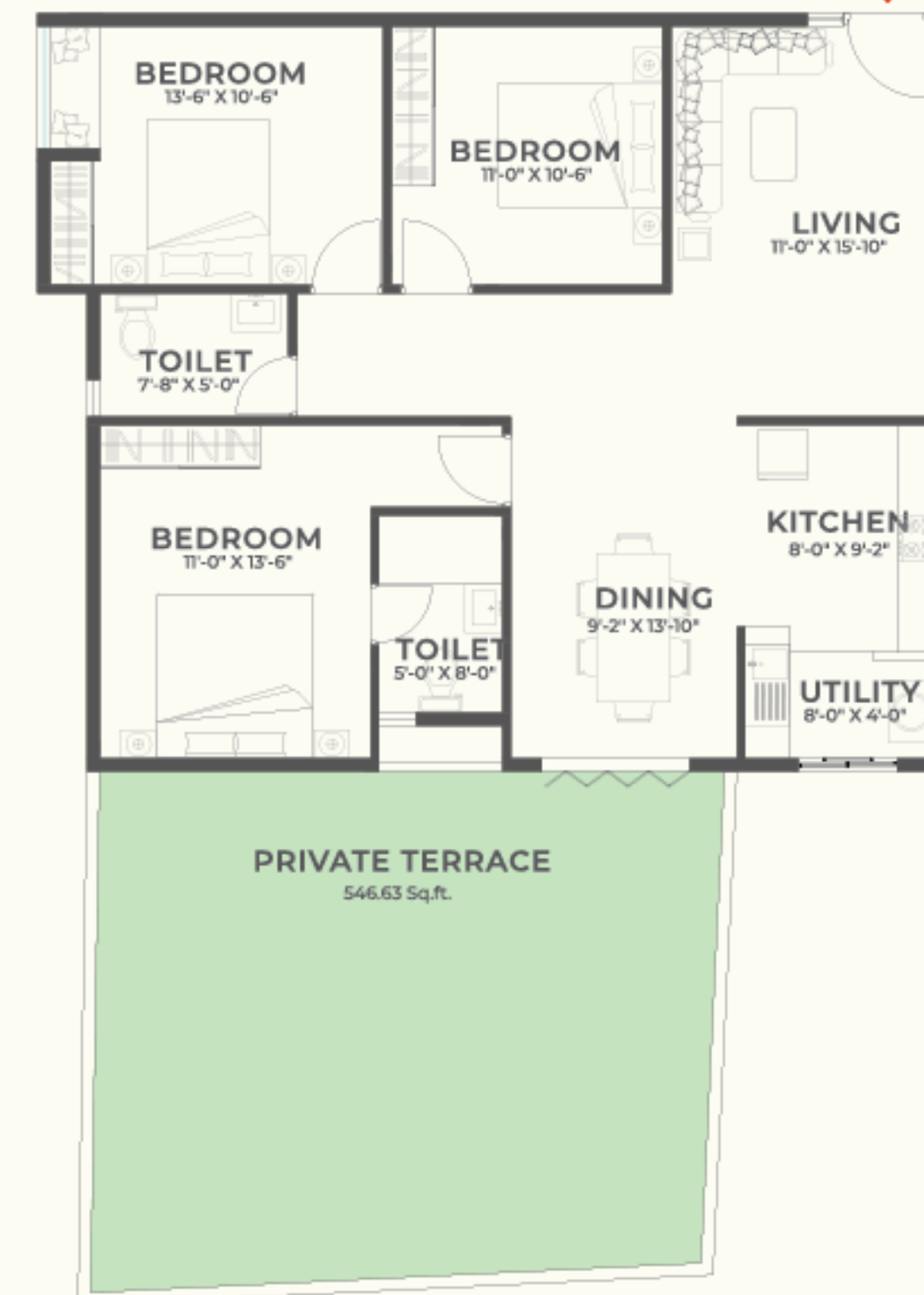
FLOOR PLAN
2 BHK + STUDY
NORTH FACING



Areas in Sft.

Carpet Area	Balcony & Utility Area	Private Terrace	Built Up Area	Common Area	Saleable Area
974.14	76.33	0.00	1123.28	316.72	1440

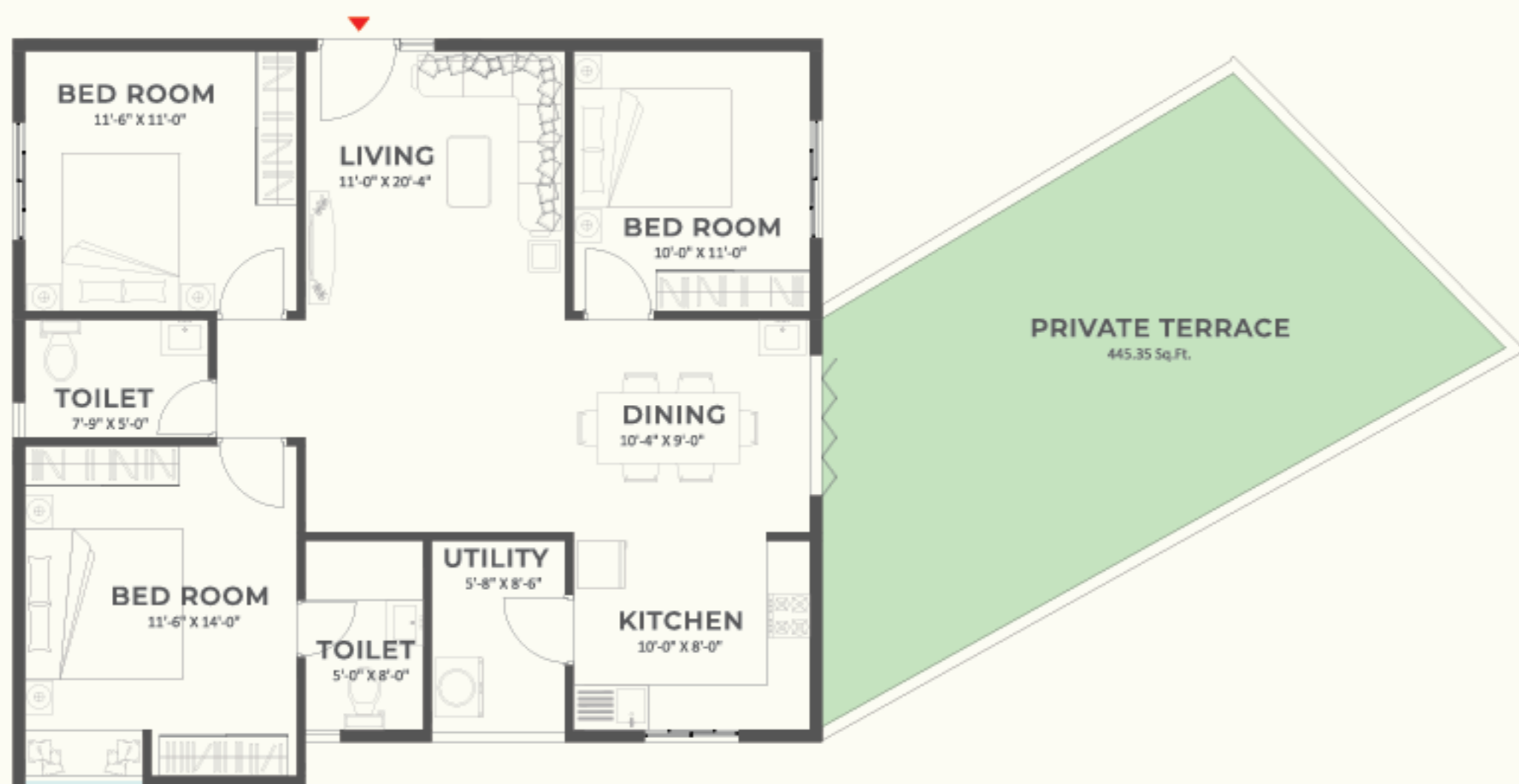
FLOOR PLAN
2 BHK + STUDY
NORTH FACING



Areas in Sft.

Carpet Area	Balcony & Utility Area	Private Terrace	Built Up Area	Common Area	Saleable Area
989.86	34.60	546.63	1097.05	307.95	1405

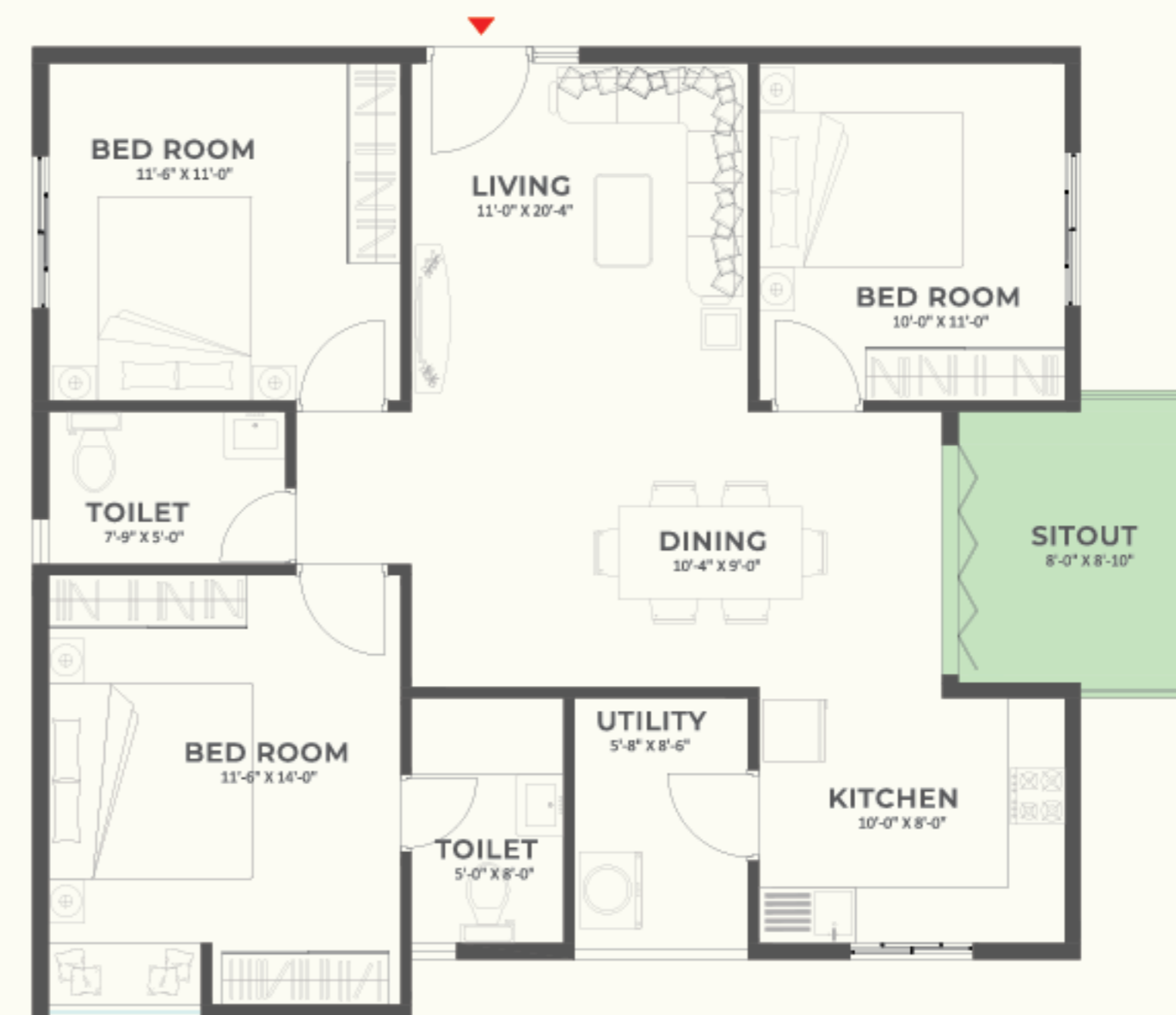
FLOOR PLAN
2 BHK + STUDY
NORTH FACING



Areas in Sft.

Carpet Area	Balcony & Utility Area	Private Terrace	Built Up Area	Common Area	Saleable Area
922.75	78.42	445.35	1038.28	291.72	1330

FLOOR PLAN
2 BHK + STUDY
NORTH FACING



Areas in Sft.

Carpet Area	Balcony & Utility Area	Private Terrace	Built Up Area	Common Area	Saleable Area
884.08	79.08	0.00	1078.28	301.72	1380



RIGHT SPOT FOR LIVING LIFE WITH CALM AND CONVENIENCE

Hummingbird is perched precisely at the perfect location - neither too close to the city's grim tones but not distant to enjoy its sweet fruits. We're in the part of the city that is a leading hub for technology and IT companies. There has been many developments in infrastructure and housing to ensure that those who are here are able to lead a genuinely happy life. From the many multi-national companies where you can find your next great career to the many schools, malls and hospitals that is there to provide good quality of life. Perhaps most alluring is the fact that the Peripheral Ring Road and Namma Metro is making its way into the area - increasing connectivity and faster travel.

KSVK SCHOOL	550 MTR	ITPL	4.1 KM
EFI COL	750 MTR	DELHI PUBLIC SCHOOL	4.3 KM
KRISH SCHOOL	1.3 KM	WHITEFIELD POLICE STATION	4.6 KM
MVJ COLLEGE	1.6 KM	DEANS ACADEMY	4.7 KM
WHITEFIELD GLOBAL SCHOOL	2.2 KM	FORUM MALL	5.3 KM
SURYA ELEGANCE	2.5 KM	COLUMBIA ASIA HOSPITAL	5.3 KM
HOPOFORM JUNCTION	2.8KM	SATYASAI HOSPITAL	5.5 KM
WHITEFIELD RAILWAY STATION	2.8 KM	PRESTIGE SHANTHINIKETHAN	5.6 KM
UPCOMING METRO STATION	2.9 KM	GOPALAN GLOBAL AXIS	5.9 KM
SATYASAI ASHRAMAM	3.3 KM	INORBIT MALL	5.9 KM
WHITEFIELD CLUB	3.8 KM	VYDEHI HOSPITAL	6.7 KM



SPECIFICATIONS

STRUCTURE

- R.C.C Frame With Columns and Beams Designed for Earthquake Resistance (Seismic Zone-II).

MASONRY

- External: 8" Porotherm Block Masonry
- Internal : 6" & 4" Porotherm Block Masonry

PLASTERING

- Internal & External : Plastering using M-Sand

PAINTING

- Internal walls : Premium Emulsion Paint
- External Walls : Weather Proof exterior emulsion paint with texture finish
- Enamel Painting for Grills & Railings

PLUMBING

- CPVC Pipes for Water Lines and PVC Pipes for Sewage lines
- Providing Solar Hot Water for Top Two Floors

WINDOWS / SLIDING DOORS

- 3 Track & 2½ track UPVC Sliding windows with Mosquito Mesh Shutter and MS Safety Grills.

BALCONY & STAIRCASE RAILING

- Glass & MS Railing

FLOORING

- Living ,Dining, Bed Rooms, Kitchen : Double Charged Vitrified Tiles
- Balconys,Utility,Toilets Flooring : Antiskid Ceramic Tiles
- Toilet: Glazed Finished wall Tiles up to 7'.0" height
- Basement flooring:IPS Flooring or VDF
- Terrace :Brick bat coba Finish over Waterproofed Base- Staircase : Finished Sadarahalli /Sira Granite
- Lift Lobby & Common area: Combination of Granite and Vitrified Tiles

DOORS

- Main Door : Both side Polished Teak finish Designer door with teak wood frame
- Hard ware :Safety Lock , SSHandle, Ball Bearing Hinges, Door eye, Tower Bolt and Magnetic Catcher
- Bed room doors: Enamel Painted Solid Doors with Sal wood frame
- Hard ware : Cylindrical lock with key, Hinges, Door Stopper and Door Bush
- Bath room doors: Enamel Painted Solid Doors with Sal wood frame
- Hard ware : Cylindrical lock without key, Hinges and Door Bush

KITCHEN & UTILITY

- 20 MM Thick Black Granite Counter with Single Bowl Single Drain Board Sink
- Glazed Finished wall Tiles up to 2'.0" height above Granite counter
- Provision for Aqua guard /RO
- Provision for Geyser
- Gas Piping for all apartments
- Provision for Washing machine and One Tap will be provided at Utility

TOILETS

- Sanitary ware of reputed make
- Wall Mounted EWC
- Chromium Plated Fittings of Reputed Make
- Provision for Geyser
- Hot water provision for Wash basin
- Water Meter to monitor the water level

LIFTS

- 2 Nos 8 -Passenger High Speed Automatic Elevator of Reputed Make
- 1 No 13 -Passenger High Speed Automatic Elevator for Service

ELECTRICAL & COMMUNICATIONS

- Fire Resistant Copper wires and Modular Switches
- BESCOM Power : 4 KW Power for 2 BHK and 7 KW Power for 3 BHK
- DG Back Up 1 KW for 2 BHK & 1.2 KW for 3 BHK
- Telephone & Data Point in Living area
- TV Point in Living and Master Bed Room
- Car Charging Points at Basement
- Solar Power Back Up for Common area and Street Light

SECURITY

- Provision for CCTV at Strategic Locations
- Home Automation (Video Door Phone & Gas Leakage Detector)

EXTERNAL DEVELOPMENTS

- Driveway: Well Designed Paver Blocks/Roads
- Landscaping: Lavish Landscaping with Grass Pavers
- Children's play area, Jogging Track, Senior Citizen Sitting Area, Badminton Court, Cricket Practice Pitch, Outdoor Gym, Barbecue Centre





Note: For Internal Discussion Only

**SY.No 42 & 44, Opp to Bharat Petroleum, Channasandra Main Road,
Whitefield, Bangalore, Karnataka - 560 068**

Call Us : + 91 81230 03101

Visit Us : www.thehummingbird.co.in