



SURAJ
EMMANUEL





AN AERIAL VIEW OF
SURAJ EMMANUEL

Artistic Impression



A LIFE THAT SPARKS IMAGINATION

Boutique sea-facing residences by Suraj

INSPIRED BY THE WORLD, BUILT FOR MUMBAI

WELCOME TO EMMANUEL

1 & 2 BHK SEA-FACING APARTMENTS LOCATED IN
THE AIR ABOVE THE HISTORIC CADELL ROAD

Designed for balance, Emmanuel reimagines eclectic internationally inspired apartments. Modern, simplistic features, higher floor-to-floor height and floor-to-ceiling windows bring the world in.

Here, you are in the centre of it all: work, play, move, breathe, learn, see, thrive, pause. Whatever your question, the answer is here. For the visionaries and global citizens, Emmanuel is an invitation to yourself.

Where you smile often, celebrate more, and feel fuller. Homes that replenish, for people who are at home in the world.



Artistic Impression

IN THE VIBRANT CADELL ROAD NEIGHBOURHOOD IN DADAR

Find South Mumbai and the International Airport less than 30 minutes away. Should you choose to stay, you are surrounded by cultural landmarks, community spaces like Shivaji Park, and entertainment and dining at Palladium just 10 minutes away.

IN THE NEIGHBOURHOOD

PLACES OF WORSHIP

- Siddhivinayak Temple **500m**
- Jain Temple **1km**
- Portuguese Church **300m**
- Swaminarayan Mandir **2.1km**

HOSPITALS

- Shreedhar Hospital **550m**
- Navneet Jain Health Centre **1.2km**
- P. D. Hinduja Hospital **2.5km**

BANKS

- ICICI Bank **1.1km**
- State Bank of India **1km**
- Bank of India **1km**

LEISURE

- Dadar Beach **300m**
- Starbucks **750m**
- Chhatrapati Shivaji Maharaj Park **1.1km**

SCHOOLS & COLLEGES

- Kirti M. Doongursee College **300m**
- ABA College of Law **400m**
- Institute of Hotel Management, Catering Technology and Applied Nutrition **1km**
- D. Y. Patil International School **1.8km**

CONNECTIVITY

- Upcoming Dadar Metro Station **500m**
- Dadar Railway Station **1km**



WITH FLOOR-TO-CEILING
WINDOWS THAT BRING IN
THE SEA, EMMANUEL IS YOUR
PIECE OF THE SKY.



Artistic Impression



Artistic Impression

RAINWATER HARVESTING
SYSTEM, EARTHQUAKE
RESISTANT STRUCTURE
AND PREMIUM
ALUMINUM WINDOWS
WITH ANODISED FINISH,
EMMANUEL IS BUILT
TO LAST.



Artistic Impression

VAASTU COMPLIANT
WITH STATE-OF-
THE-ART FITTINGS
THAT RUN LIKE
CLOCKWORK, WE
OFFER A SOLID
CANVAS FOR YOU
TO DESIGN YOUR
DREAM LIFE.





COSY CORNERS
THAT ARE ALL
YOURS



Artistic Impression

HOMES
BUILT FOR
CELEBRATIONS



Artistic Impression

KEY EXTERNAL AMENITIES

- Gymnasium
- Main entrance lobby at ground floor
- Car parking
- 24-hour security
- Firefighting equipment
- RO water system
- Rainwater harvesting system
- Power back-up facility
- Earthquake resistant structure

KEY INTERNAL AMENITIES

- Branded vitrified tiles in all the rooms
- CP & sanitary fittings of a reputed brand
- Premium quality granite kitchen platform
- Premium aluminium windows with anodised / powder coated finish
- Black granite / marble sills

* Suraj Developers reserves the right to modify, alter or update the amenities.



Artistic Impression



SURAJ

LIFE BEGINS HERE

Suraj Estate Developers are a marquee real estate construction company with over 35 years of experience in building inspiring spaces. In Mumbai's most historic locations, we have developed 40+ residential and commercial projects with a focus on quality and innovation. Our celebrated partners and best-in-class associations bring the world's finest to its most discerning residents. We have developed custom spaces for the country's leading businesses including National Stock Exchange, Union Bank of India and the Clearing Corporation of India.

Our ongoing residential projects—The Palette, Ocean Star and Mangirish—redefine city living while transforming the landscape of Mumbai. Our landmark real estate developments offer premium quality across budgets and requirements.

THE

ASSURE

Assurance of 35 years' experience in understanding space, design and construction

BUILD

Building 40+ projects across residential and commercial segments

A B

C

D

OF SURAJ

COLLABORATE

Collaborations across 10 lakh sq ft in prime locations

DEVELOP

Developing the heart of Mumbai through premium offerings for every budget

A COLLECTION
OF OUR ONGOING
PROJECTS



The Palette | Dadar (W), Mumbai



Ocean Star | Prabhadevi, Mumbai



Ave Maria | Dadar (W), Mumbai



Louisandra | Dadar (W), Mumbai



Mangirish | Prabhadevi, Mumbai



Nirvana | Parel, Mumbai



St. Anthony's | Mahim (W), Mumbai

SOME OF OUR CLIENTS TO WHOM WE'VE OFFERED REAL ESTATE SOLUTIONS INCLUDE:





SURAJ EMMANUEL

PROJECT PARTNERS

Design Architect: Vivek Bhole Architect Pvt. Ltd.

RCC Consultant: Sterling Engineering Consultancy Services Pvt. Ltd

BMC Architect: P. N. Bobe Associates

SITE ADDRESS

Suraj Emmanuel, F P No - 752 , Kirti College Marg,
Near MTNL Building, Off Cadell Road, Dadar (West),
Mumbai, Maharashtra 400028

CORPORATE OFFICE

Suraj Estate Developers Pvt Ltd.
Aman Chambers, 3rd Floor, Century Bazaar,
Prabhadevi, Mumbai 400025

FOR ENQUIRIES

call 9513373410

or email sales@surajestate.com

www.surajemmanuel.com

 @SurajEstateDevelopers

 @SurajDevelopers

MahaRERA Number: P51900028729 and available on the website <https://maharera.mahaonline.gov.in>

The plans, specifications, images and other details herein are only indicative and the Developer / Owner reserves the right to change any or all of these in the interest of the development. This printed material does not constitute an offer and / or contract of any type between the Developer / Owner and the recipient. Any purchaser / lessee of this development shall be governed by the terms and conditions of the Agreement for Sale / Lease entered into between the parties, and no details mentioned in this printed material shall in any way govern such transactions.

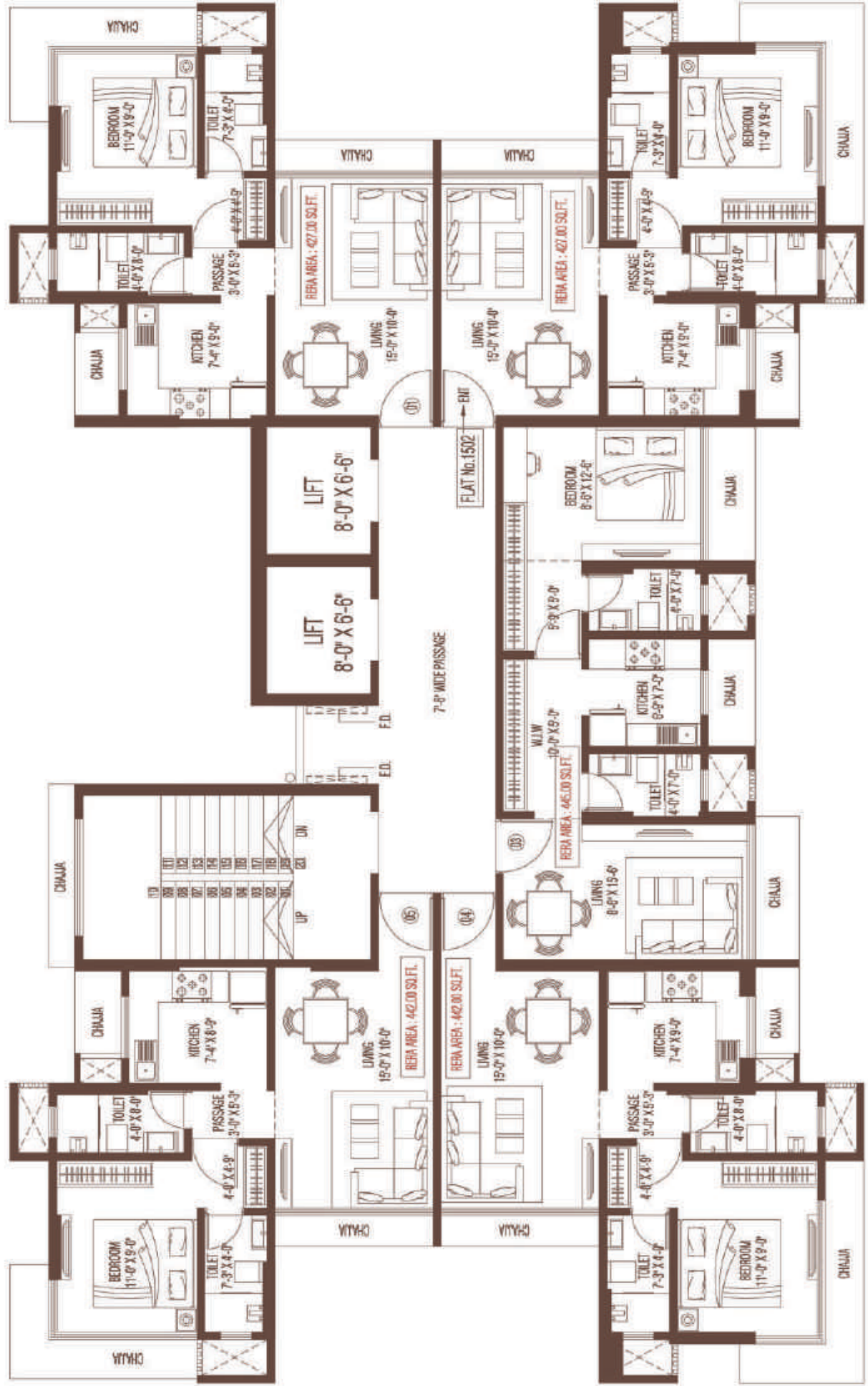


SURA J
EMMANUEL

TYPICAL
FLOOR PLAN

1 BHK

9th to 13th Floor
& 15th to 16th Floor





SURAJ
EMMANUEL

TYPICAL
FLOOR PLAN

2 BHK

17th Floor onwards

