



The Cennet

For Your Loved One's

Introduction

Presenting The Cennet, a 28 storied residential landmark located a little away from the city's noise at Kalyan Shilfata Road near Dombivali, a city in the Thane District of Maharashtra located about 15 kms from Navi Mumbai.

The Cennet is surrounded by lush greenery and depicts serenity at it's best. Here, you shall find majestic 1 & 2BHK apartments, luxurious penthouses and world class amenities that bring life back in vogue. The Cennet is a sheer reflection of classiness and extravagance.

The grand Atrium and the entrance lobby here says it all.

Discover this heavenly masterpiece. Discover The Cennet.



Front View





We, the human race, were born to evolve.

To adapt to the fast-changing world and reinvent ourselves each day. But hasn't our city's shrinking spaces and lack of freedom kept us away from this sheer joy? So we thought to ourselves, what if there was a lavish place where everything felt like paradise and extraordinary amidst lush greenery and nature.

A place that truly feels like Heaven - The Cennet.



Night view



Ground Floor plan

When you step into The Cennet, you step into opulence and magnificence, quite literally. The stunning fountains give you a grand welcome, right at the entrance while the dedicated residential and commercial entrances and the security makes sure everything goes perfect. At Cennet, life is happening and you will have ample opportunities to recharge yourself each day. Join your friends at the badminton court and the Tennis court, just next to the clubhouse as you arrive here or just take a stroll with your loved one at Cennet's well planned aroma garden.

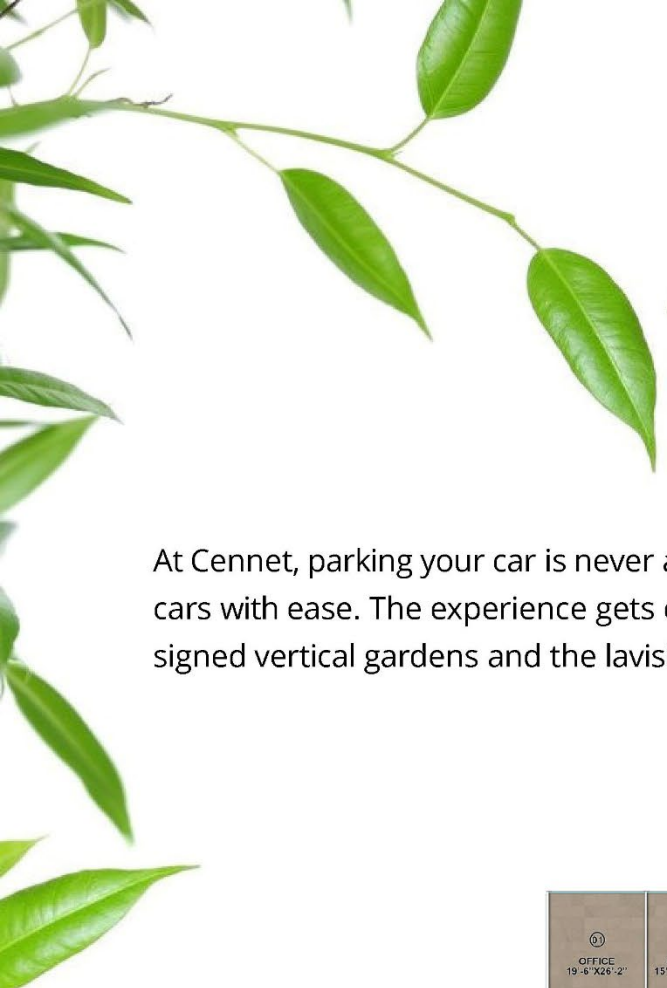


Comercial view

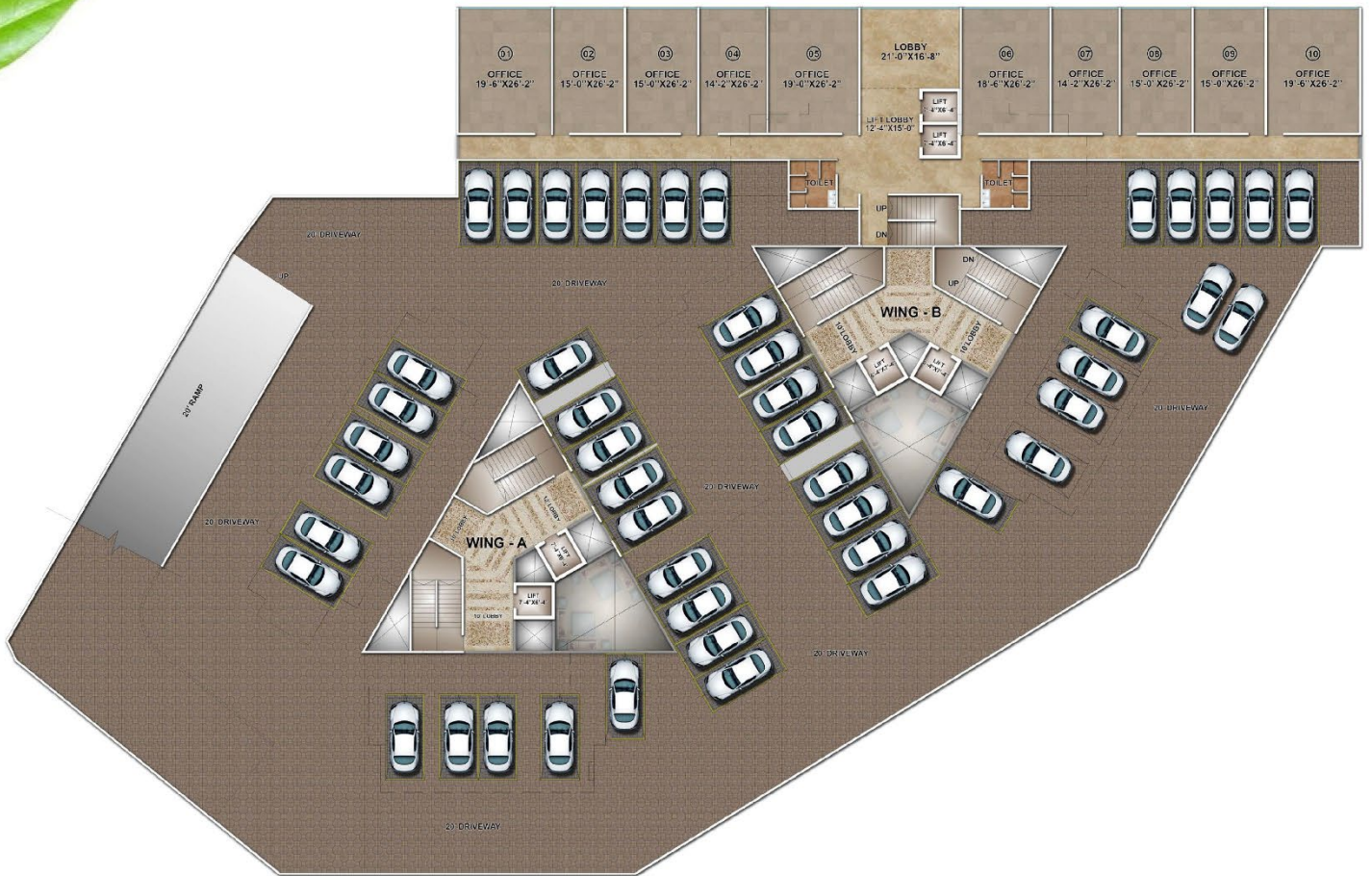


Shop till you drop anytime and anyday!

Indulge in some retail therapy as the retail area at Cennet is just a few steps away from you which offers a whole range of well known brands for you to choose from whenever you want.



At Cennet, parking your car is never a hassle as there are 3 levels dedicated to park your cars with ease. The experience gets even more welcoming here with the beautifully designed vertical gardens and the lavish podium lobby.



1st and 2nd floor plan

Club house view



Going forward is the rule of life.
Prove it through your games.

You love playing cards. You are passionate about billiards and snooker.
Then why stay behind? Jump into the game and go with the flow. Shouldn't that be the recipe of exciting weekends?

After having a hectic week, we all would look forward to a relaxed weekend.
But what better than having it spent with friends and family at Cennet's clubhouse?

Cennet offers an exclusive clubhouse where you can enjoy all the recreational activities like table tennis, snooker, chess, carom and much more. Here, we also have a conference room for your essential meets and a party hall for those special occasions.

All this under one roof.



Life is defined by two things – what you did in the past and how you are shaping your tomorrow. And all of this depends on your today. That's why we make sure of taking care of your elder folks, you and your little ones in the best way possible. Here we have an Old Folks' Zone, Jogging Track and a Kids' Play Area to help you and them make the most of this important phase of life.



3rd floor plan

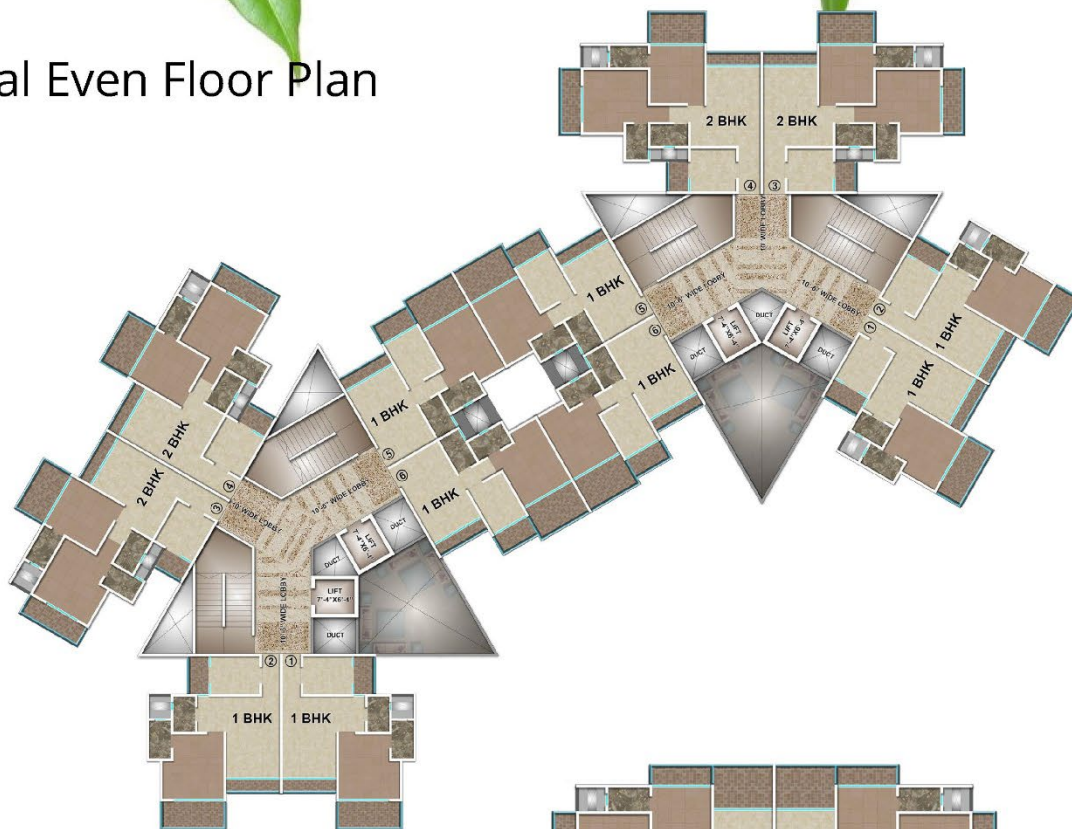
Give your soul a new shape every day.

We have embraced various new ways of fitness. But we are also rooted to our good old traditions. That's why, Cennet offers you a fully-loaded gymnasium and a yoga zone that doubles up as a dance studio just for your happy feet. And if you love taking a dip, we have an extravagant swimming pool just for you.

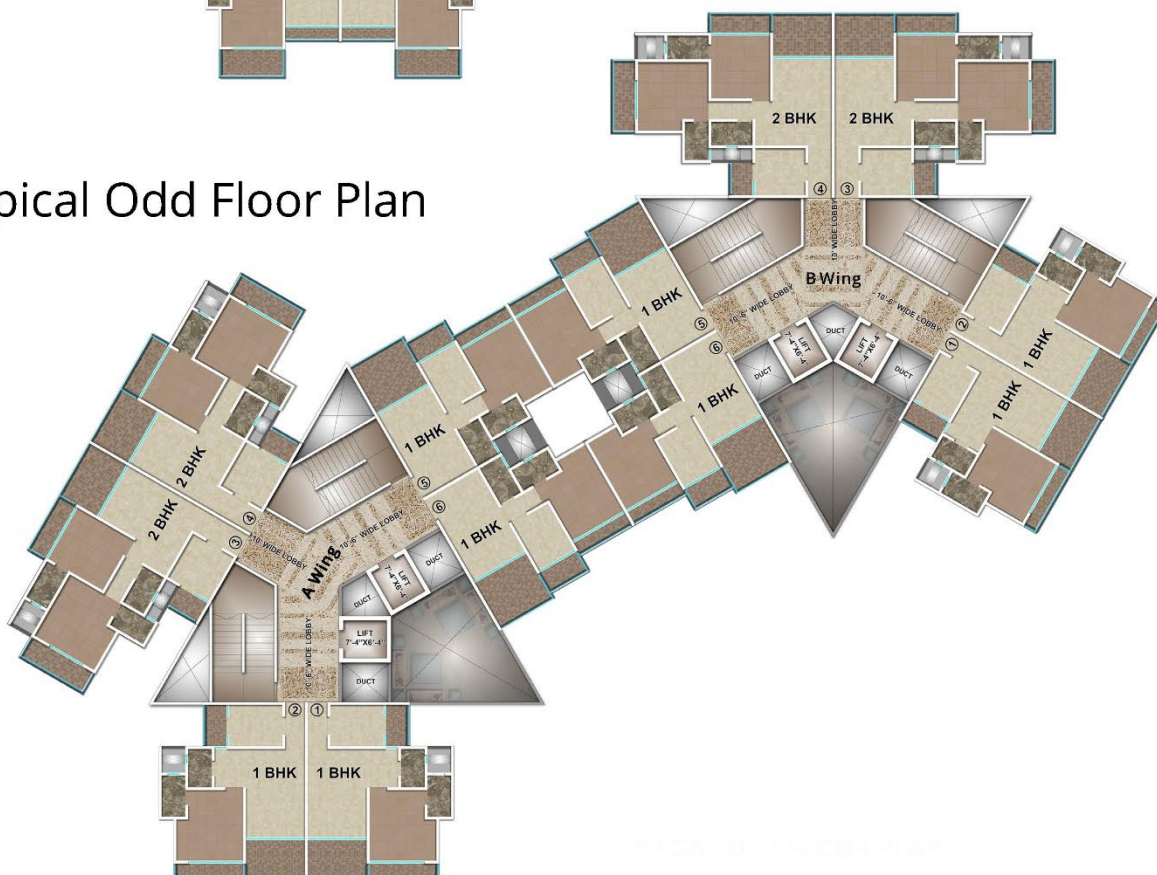
Swimming pool



Typical Even Floor Plan



Typical Odd Floor Plan



The apartments here are spacious and the well planned architecture ensures ample natural light into the apartments. Each apartment here has a balcony on every floor, where you can live your moments of peace and serenity. And when you step out of your abode, the well crafted lobby on each floor will never let you down but only make you a proud Cennet resident.

Top view



Note
As per present policy - 21 Floors
As per Draft Dcr - 28 Floors

Common Amenities

- Earthquake-resistant R.C.C frame structure
- External wall 150 mm Th.
- Internal wall 100 mm Th.
- Fire Fighting System
- Terrace Water Proofing
- Spacious well designed and elegant entrance lobby.
- Non-skid chequered tile paving within society compound
- Rainwater Harvesting
- Fully equipped fitness center
- Children's play area along with benches for senior citizens
- Lockers / drop boxes for mail/parcel/post
- High-security Gates
- Toilets on the ground floor for domestic help
- Security Cabins
- The Society office will have false ceiling, textured walls, vitrified floor tiles and non-skid flooring in the toilet.
- Lift with power backup
- Good Quality pavers (tiles) surrounding the building premises
- Ample covered as well as open car parking space
- Jogging Track surrounding the gardens
- Plumbing and sanitation through external ducts
- Designer Staircase



Club Amenities

- Clubhouse with modern Gymnasium and sports facilities
- Party Lawn
- Pool on podium
- Chatting corner seating space



Internal Amenities

Living room

- Marbo Granite or equivalent flooring in the living room and passage area
- P.O.P. on walls with decorative cornice on the ceiling
- Heavy gauge sliding windows with mosquito screens
- Adequate points for television, Music system and telephone
- All walls will be painted with paint
- Lights & Fan points
- Modular Switches of Branded Fitting
- Locks of reputed make
- S.S. and glass railing for flower beds.
- Magnetic Door Stoppers
- Heavy duty latches
- Granite door frames with flush doors

Pantry / Kitchen Room

- Modular kitchen
- Vitrified flooring with tiles dado
- Granite built in kitchen platform supported on kadappa
- Stainless steel sink
- UV water purifier , Geyser & Exhaust fan
- Copper or 'C' PVC concealed piping in toilets
- Angle stopcock as provision for water purifier
- Open type sink mixer
- CP jail on nahani trap
- 16 Ampere electric power points for washing machine, purifier, mixer, microwave, etc.
- Plumbing connection for washing machine/dryer and dishwasher
- Modular switches of Branded Fitting
- Provision from compound to kitchen for period gas
- Locks of reputed make
- Heavy gauge aluminum frame with tinted float glass, mosquito net
- M.S. railing for dry yard
- Magnetic door stoppers
- Heavy duty latches
- Granite door frames with flush door

Bed Room

- Vitrified flooring
- Night Lights
- Two way switches
- P.O.P. on walls cornice on the ceiling
- 20-A power points for A.C. and adequate points
- Modular switches of Branded Fitting
- Locks of reputed make
- Heavy gauge aluminum frame with tinted float glass, mosquito net
- S.S. and glass railing for flower beds.
- Magnetic door stoppers
- Heavy duty latches
- Granite door frame with flush door





Address

The Cennet, Nilje,
Kalyan - Shil Road
Opp. Xperia Mall,
Dombivali, East

Nearby-

Xperia Mall - 0 kms
Lodha World School - 0 kms
Ira High School - 2.5 kms
Nilje Station - 1.5 kms
Dombivali Station - 6.5 kms
Shilphata Junction - 3.5 kms



SHANTIRATNA
GROUP



**Manish B
Jain**

Legal Advisor

Developed by - Shantiratna Group

Architect - H2 Architects

Manish B Jain - Legal Advisor

info@thecennet.in

9071777000

All the information in this brochure is indicative of the kind of development that is proposed, subject to the approval of the respective authorities and the developer reserves the right to change all of these in the interest of development.

MAHA RERA NO - P51700015636