



PRESENTS

**Experience** the incredible sense of calm ...

# STONEVILLA

ulwe - navi mumbai



# STONEVILLA

ulwe - navi mumbai

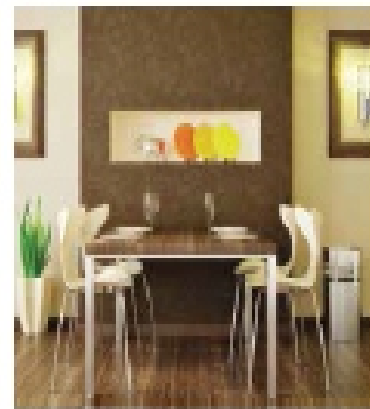
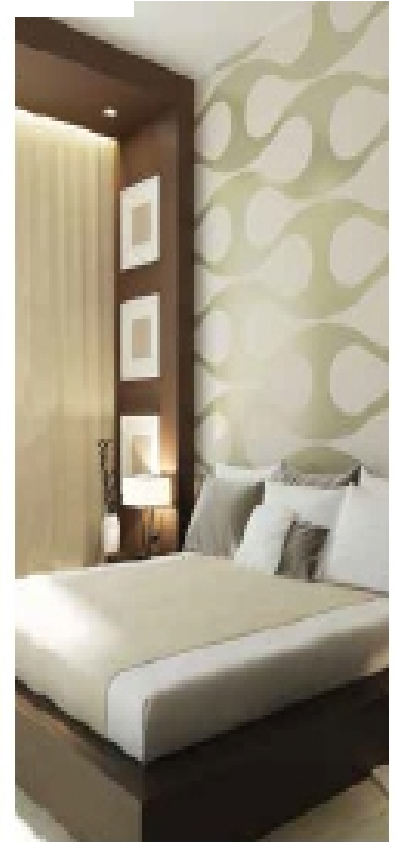
STONE VILLA luxurious apartments, bright & colorful ambiance are embellished with contemporary amenities that for sure will complement your life. The STONE VILLA is spread in the sufficient area to provide you with spaces for unwinding and socializing with your neighbors. It also offers proximity to day to day conveniences like Shopping Areas, School, Medical and other facilities to complete a full circle.

- Clear title CIDCO transfer plot
- G+7 storey residential project
- 1BHK & 2BHK flats with natural light & maximum ventilation
- Quality construction with earthquake resistant RCC structure
- Taste-fully designed entrance & floor lobbies
- Branded high speed elevators
- Power backup for lifts & common area



# STONEVILLA

ulwe - navi mumbai



## The Amenities

### FLOORING

- 2'x2' Vitrified flooring tiles in all the rooms

### KITCHEN

- Granite kitchen platform with stainless steel sink
- Ceramic tiles dado above kitchen platform

### BATH/WC

- Concealed plumbing with good quality sanitary fittings
- PVC plumbing fittings
- Glazed tiles up to full height
- Ceramic tiles flooring in bath & WC
- Good quality aluminum louvers in bath & WC
- Hot & Cold water mixer point
- One wash basin

### WINDOWS

- Powder Coated Aluminum sliding windows with glass in living room, bedroom & kitchen

### WALL FINISH

- Internal walls painted in Semi Acrylic Paint
- External walls coated with Acrylic paint

### DOOR

- Main door with decorative lamination finish and internal wooden doors
- Marble frame for all the doors of bath & W.C.
- Wooden door frames for all rooms
- Main door with good quality night latch & decorative handle

### ELECTRICAL

- Concealed copper wiring with reputed brand modular switches, telephone & T.V. (cable) points in living room & bedrooms

### WATERTANK

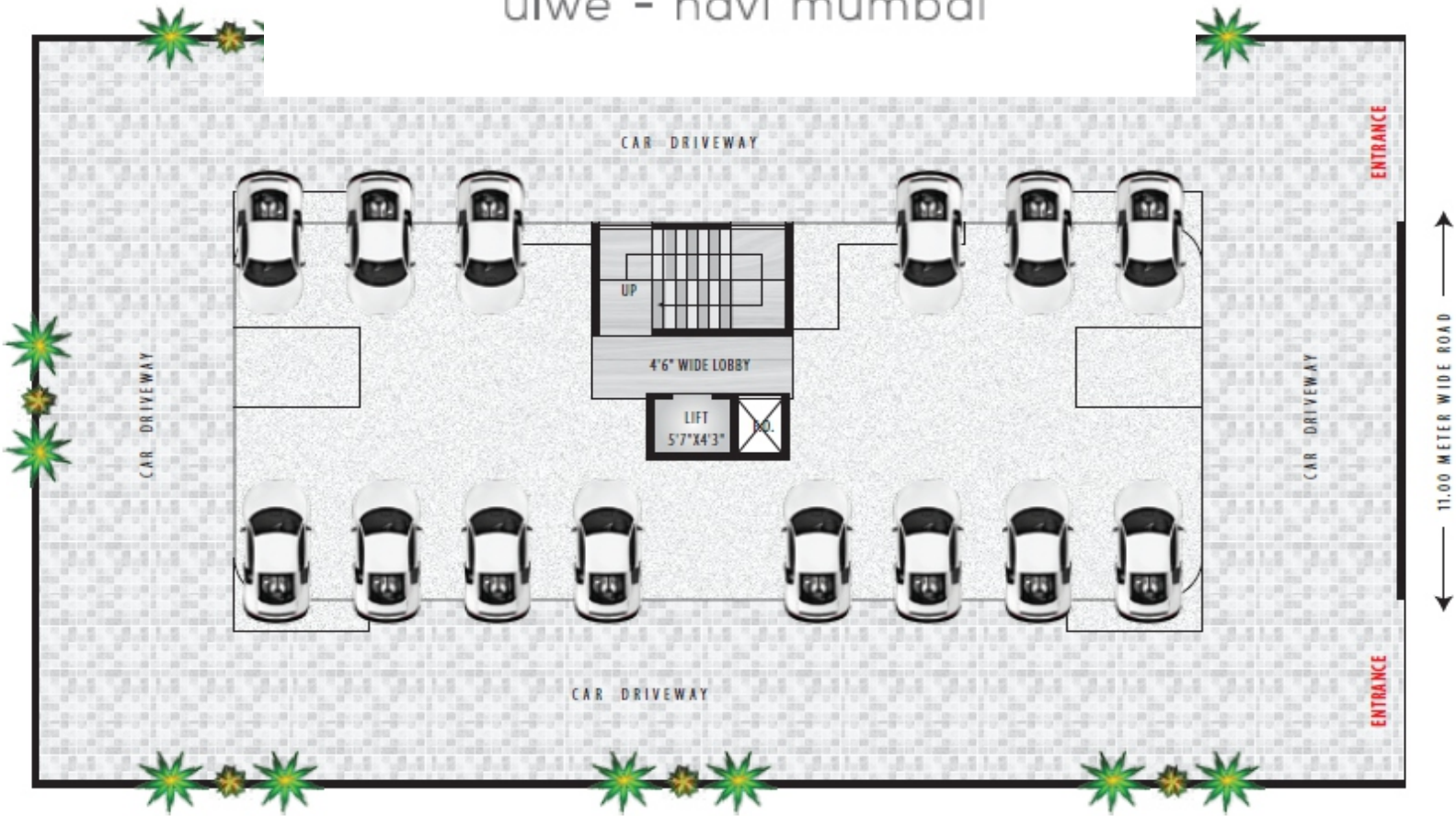
- Underground & overhead tank with adequate storage capacity

### TERRACE

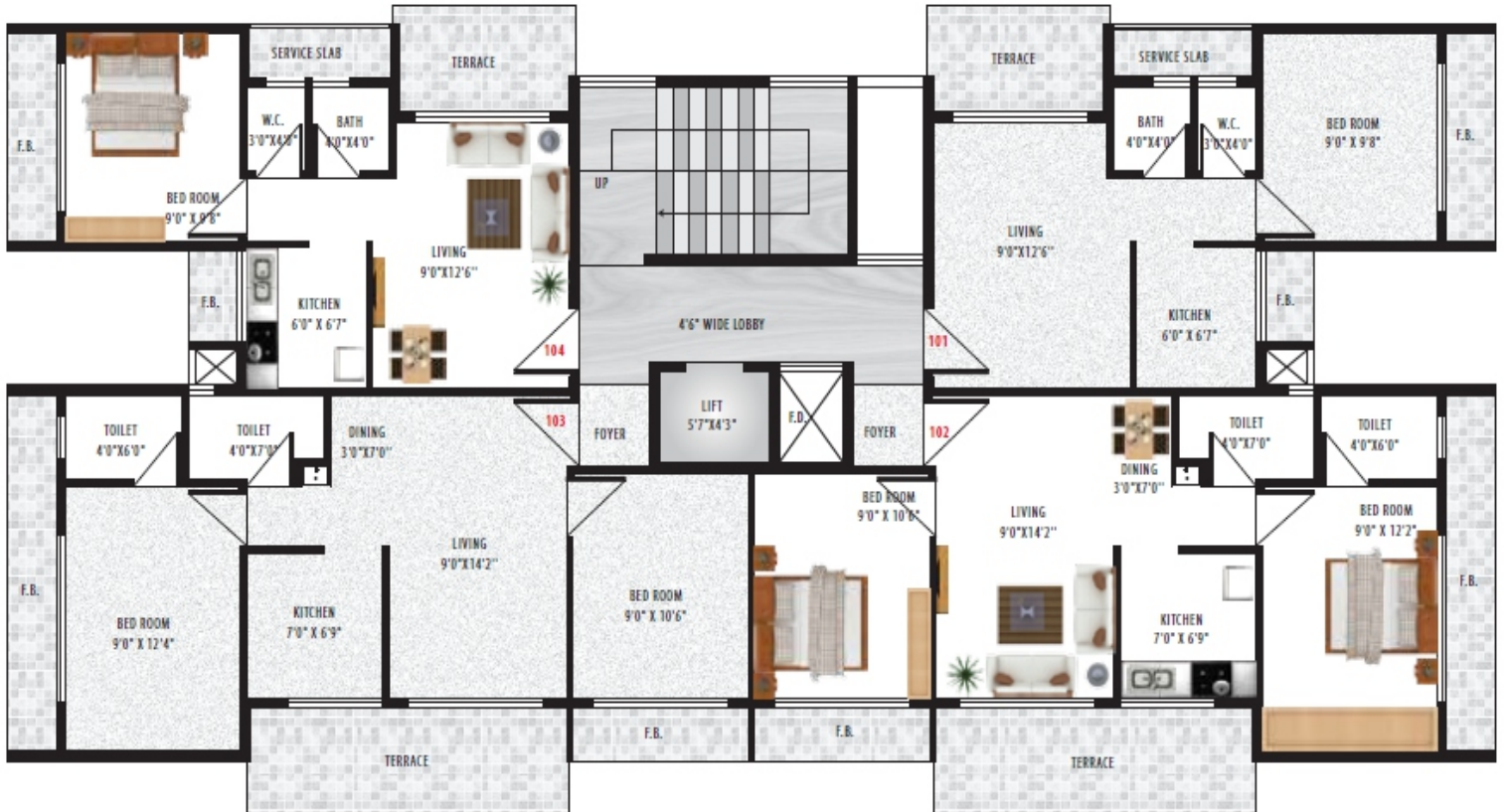
- Special water proofing treatment with china chips

# STONEVILLA

ulwe - navi mumbai



Ground Floor Plan

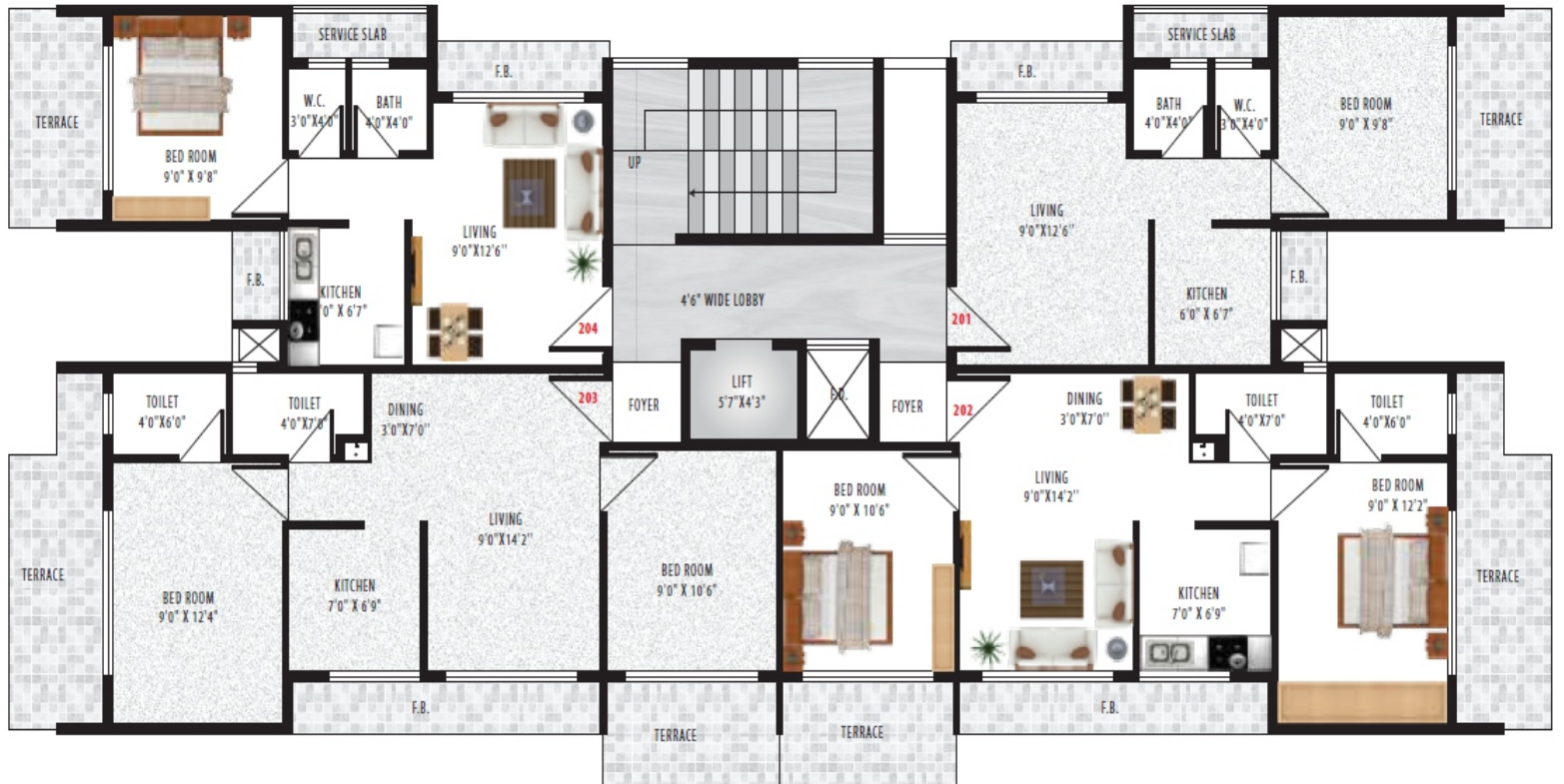


First Floor Plan



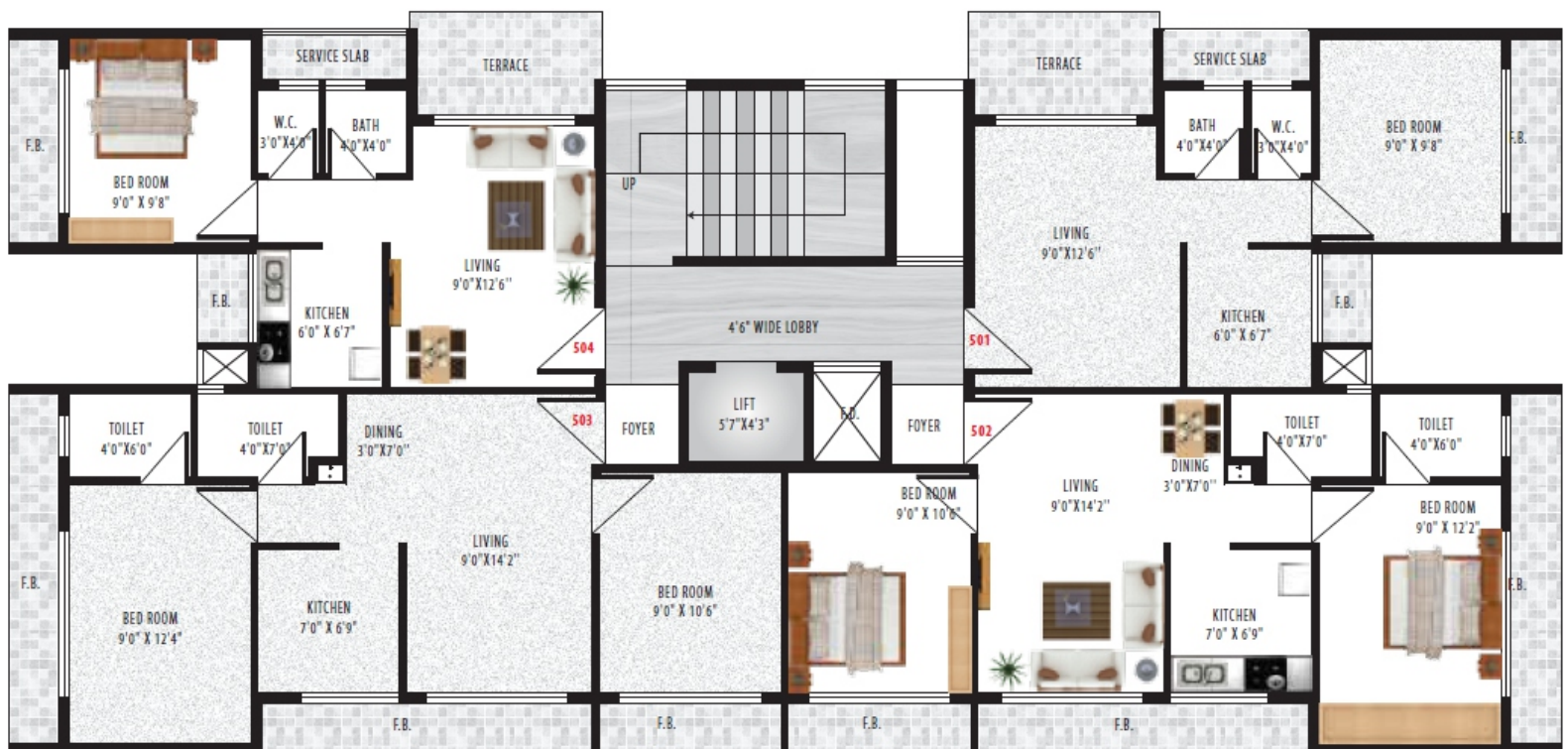
# STONEVILLA

ulwe - navi mumbai



Typical Floor Plan

2nd - 4th



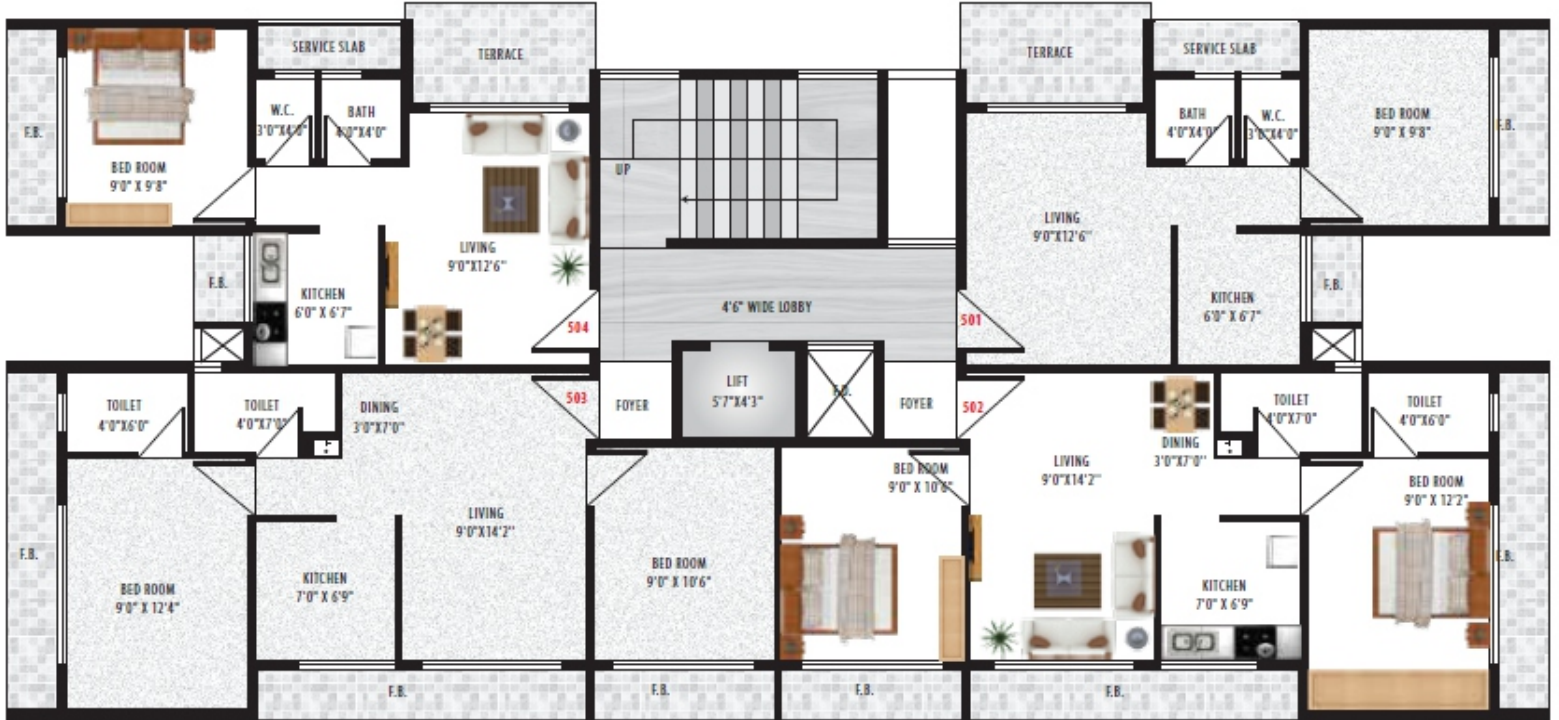
Typical Floor Plan

3rd - 5th



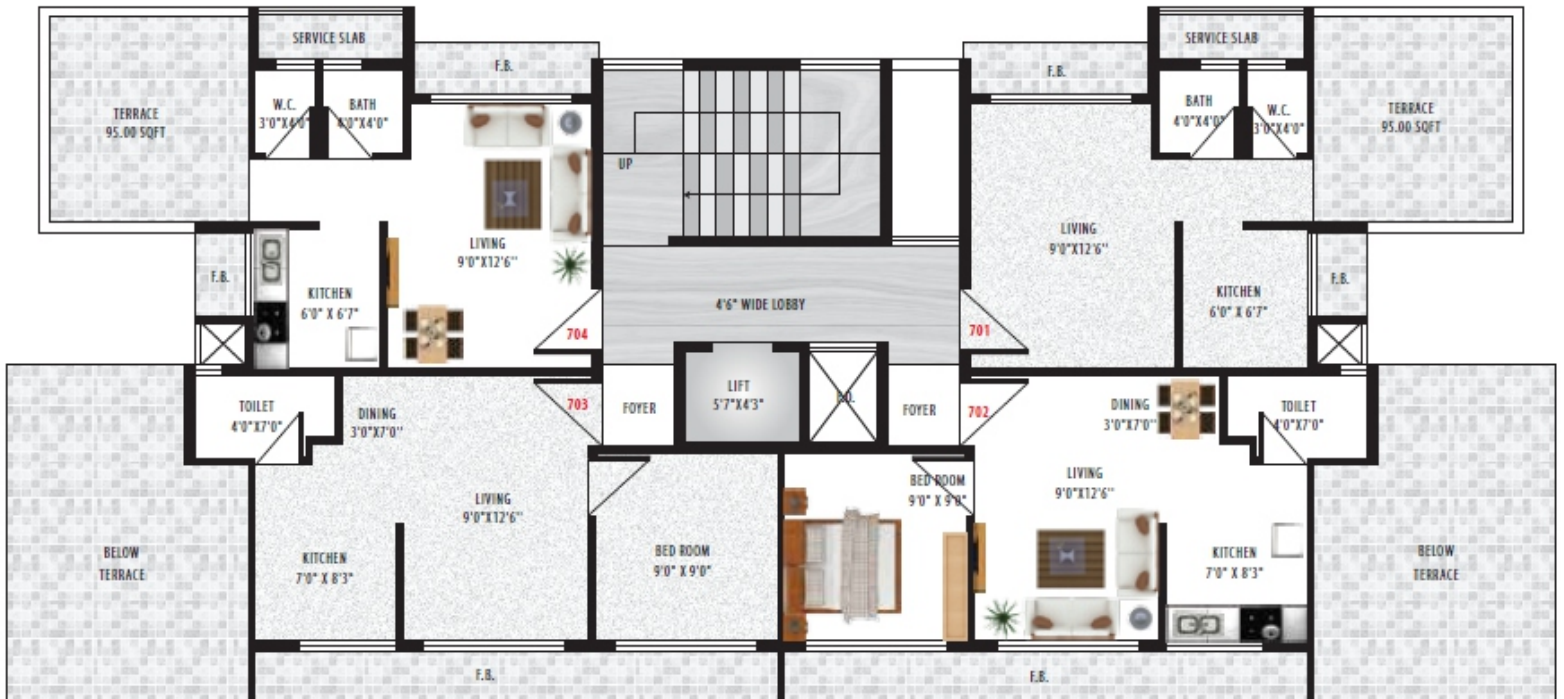
# STONEVILLA

ulwe - navi mumbai



Typical Floor Plan

3rd - 5th

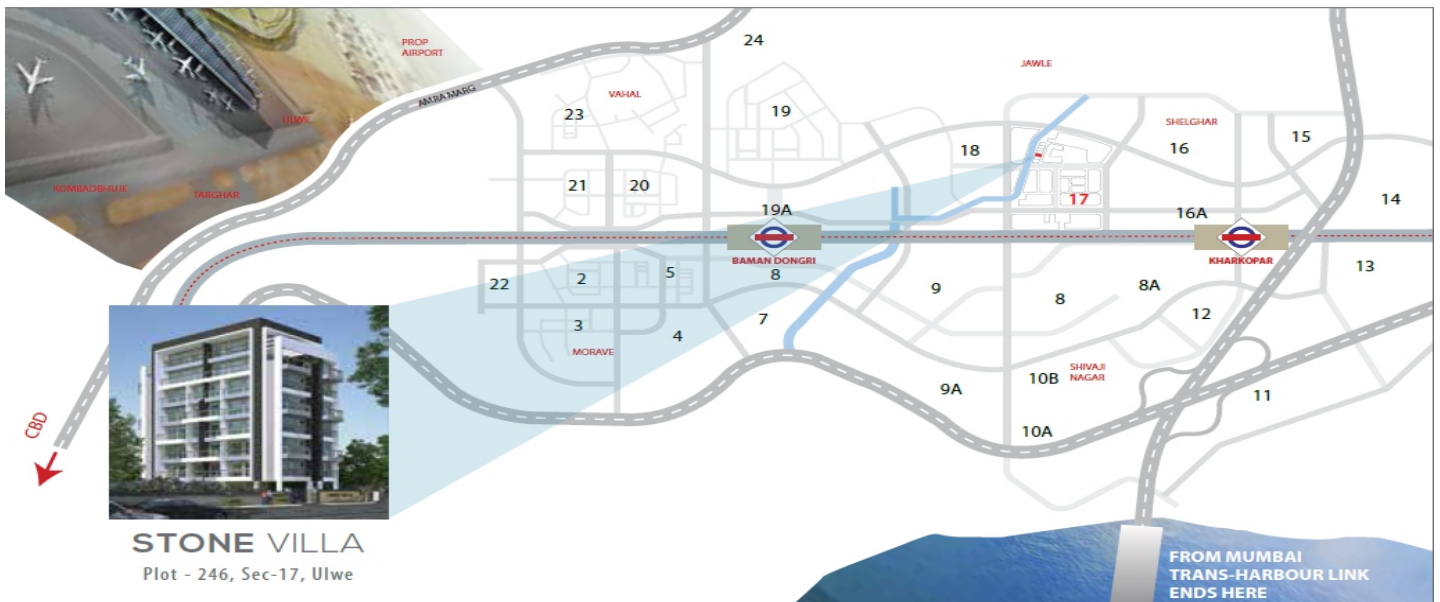


Seventh Floor Plan



# The Location

- Excellent connectivity to Palm Beach Road, Mumbai – Pune Express Highway, CBD – Belapur, Vashi, Mumbai – Goa Highway, JNPT
- 5 min. walkable distance from the prop. Bamandongri Rly. Stn.
- 2 min. drive distance prop. Kharkopar Rly. Stn.
- 5 min. drive from the prop. Navi Mumbai Int. Airport
- 2.5 Km. away from prop. Nhava Sheva -Sewree Sea Link
- 10 min. drive from existing Seawood, Darave – CBD Belapur – Nerul Railway Station
- Banks, Markets, Hospitals, Schools, Colleges, Play Grounds, Stadium, Railway Station, Restaurants, Hotels at proximate distance from the project site



Office No. 316, NBC Complex, Plot No.43,  
Sector - 11, Opp. Belapur Station,  
CBD Belapur, Navi Mumbai - 400 614.  
Office Contact-022 27576001/2,

Email-[aditya.group@outlook.com](mailto:aditya.group@outlook.com)/  
[www.adityagroupm.com/](http://www.adityagroupm.com/)

Site Add : Plot No.-44B, Sector-19B, Ulwe, Navi Mumbai

Developer  
**AAKAR ENTERPRISES**

**BOOKING CONTACT**  
**9029064040/41/42/43/44**

Architect :Designo || R.C.C.Consultant: Adharshila Consultant