



DREAM PARADISE ULWE

....Reach the sky



Modern Amenities

WALLS

- External Wall to be 6" Brick Work With 2 Coats of sand Face Plaster
- Internal Partition walls to be 4" Brick work

FLOORING

- 24" x 24" Vitrified Flooring in all Rooms.
- 12" x 12" Flooring in Bathroom, W.C. & Terrace

KITCHEN

- Granite Platform with S.S. Sink and Dado Tiles up to 4' Height

WINDOWS

- Marble Sill in all Windows
- Aluminium Powder Coating Sliding Windows

ELECTRIFICATION

- Sufficient Electric points of Concealed Copper Wiring with Modular Switches.
- Ample light points in Parking Area.

PLUMBING

- Concealed Plumbing work, reputed make Bathroom Fitting.

PAINTING

- Acrylic paint for the External Face of the Building.
- Good Quality Paint for Internal Walls.

BATHROOM & W.C

- Glazed Tiles in Bath & W.C. with Modern Concepts up to 7' Height

WATER SUPPLY

- Provision of Separate overhead and ur drinking water tank with adequate capacity building

LIFT

- Good Quality Lift.

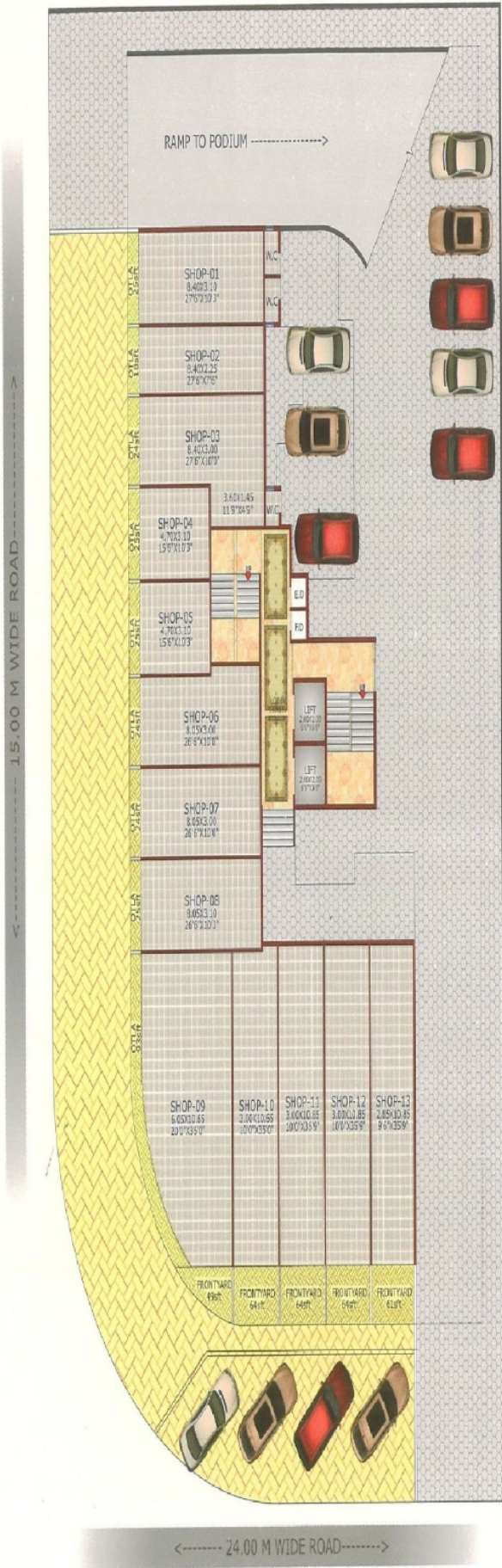
FIRE FIGHTING

- Fire Fighting System with Fire Extinguisher each floor.

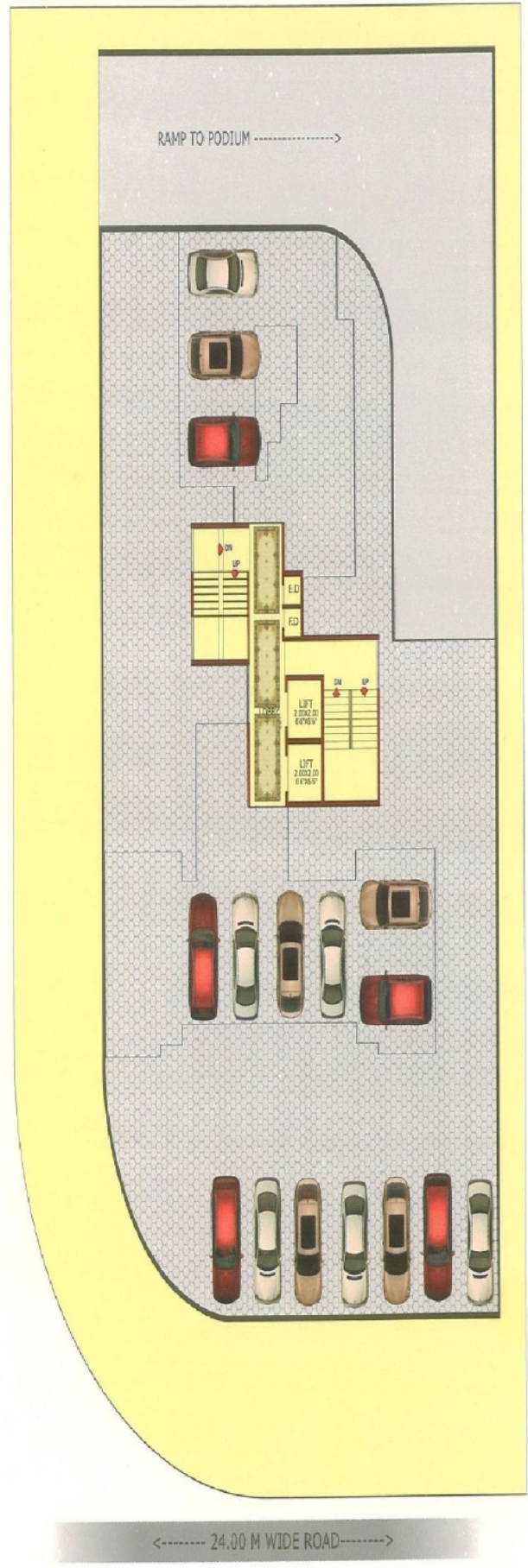
Location Features

- Approx 5 mins. walking distance proposed Bamandongri Railway Station.
- Approx 10 mins. walking distance Kharkopar.
- Approx 20 mins. drive to the Panvel Railway Station.
- Approx 5 mins. drive to the proposed Navi Mumbai Airport.
- Peaceful, quiet environment.
- Approx 15 mins. drive to the Mumbai - Pune Express Highway.
- Near by Proposed Sewri - Nhava Sheva Sealink.
- Railways, Schools, Colleges, Hospitals, Gardens, Banks & many more facilities are comming soon.





GROUND FLOOR PLAN



FIRST FLOOR PLAN



<----- 24.00 M WIDE ROAD----->

10TH FLOOR PLAN





<----- 24.00 M WIDE ROAD ----->

12TH FLOOR PLAN

MARKETED BY



Office No. 316, NBC Complex, Plot No.43,
Sector - 11, Opp. Belapur Station,
CBD Belapur, Navi Mumbai - 400 614.
Office Contact-022-41320000/1/2/3/4/5/6.....100
Email: aditya.group@outlook.com
Web: www.adityagroupm.com

Site Add : Plot No.160, Sector-09, Ulwe, Navi Mumbai

Developer
LUCKY ENTERPRISES

BOOKING CONTACT
9029064040/42/43/44