

*Live uninterrupted.*

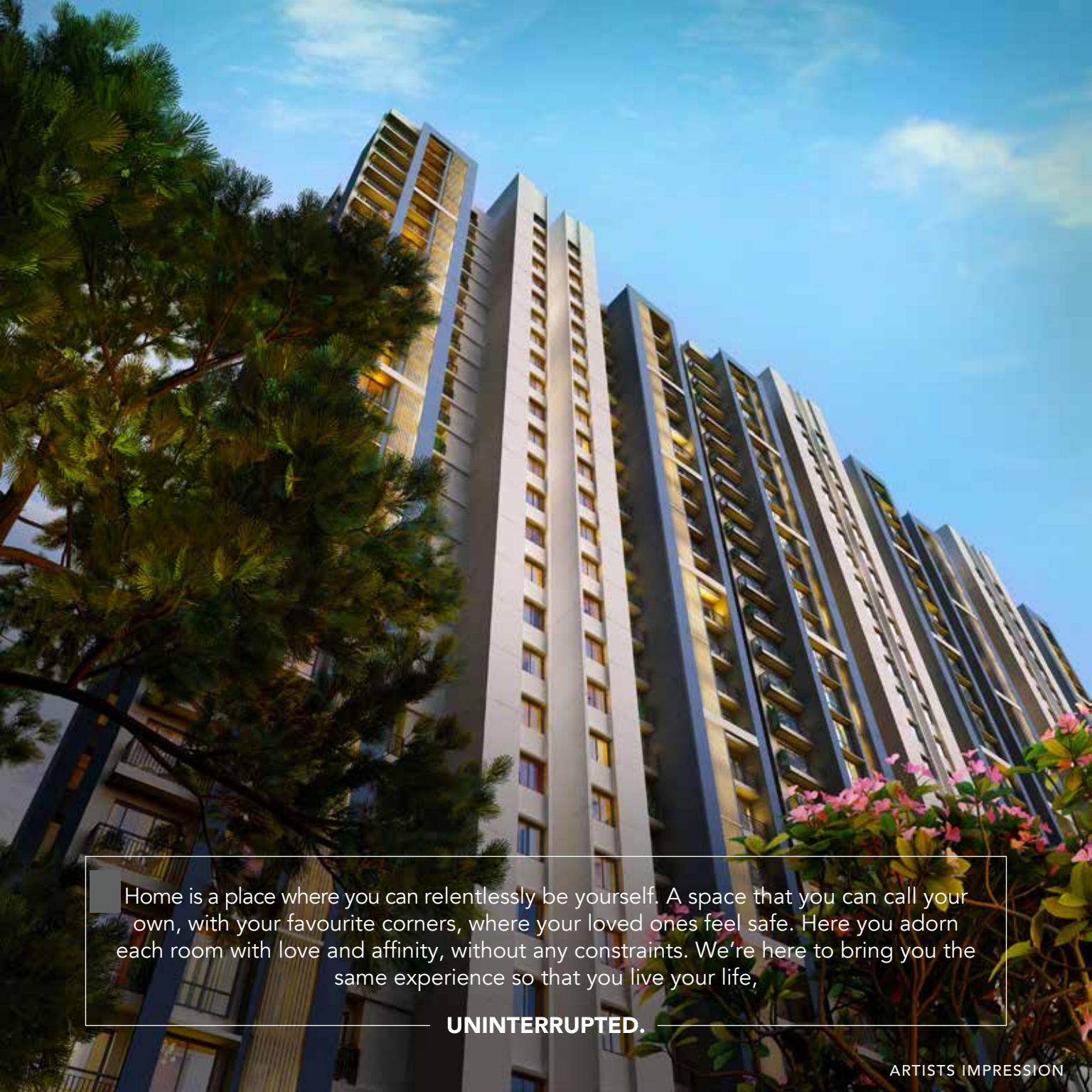


Introducing,



# THE CITY of CITIES

A mélange of routine and recreation.



Home is a place where you can relentlessly be yourself. A space that you can call your own, with your favourite corners, where your loved ones feel safe. Here you adorn each room with love and affinity, without any constraints. We're here to bring you the same experience so that you live your life,

**UNINTERRUPTED.**

ARTISTS IMPRESSION

# DOMBIVLI

The Hub of Heritage.

Known especially for its Marathi culture and unremittingly high literacy rate, Dombivli is a busy city with a rich history dating back to the year 1075, and an impeccable transformation in the near future making it the next big Smart City.



# UNINTERRUPTED FUTURE.

## Gearing up for gen-next.

With future-friendly infrastructure built on the foundation of a rich heritage, the entire corridor is a paragon of transformation suiting not just you, but the coming generations too.



# UNINTERRUPTED CONNECTIVITY.

## Bringing the world closer to you.

Greater connectivity to both nearby cities and faraway places with rapidly transforming infrastructure. Now connectivity will be uninterrupted with upcoming express highways and freeways, railway, metro, and monorail, and Navi Mumbai International Airport.



IMAGE FOR REPRESENTATION PURPOSE



Located at the center of the Golden Triangle - Kalyan, Thane and Navi Mumbai



Proposed Metro Corridor and Freeway



Virar Alibaug Multi Modal Corridor



30 mins from upcoming Navi Mumbai International Airport



Proposed Mankholi – Mothagaon Bridge



Upcoming smart city



Proposed Airoli Katai Tunnel Road



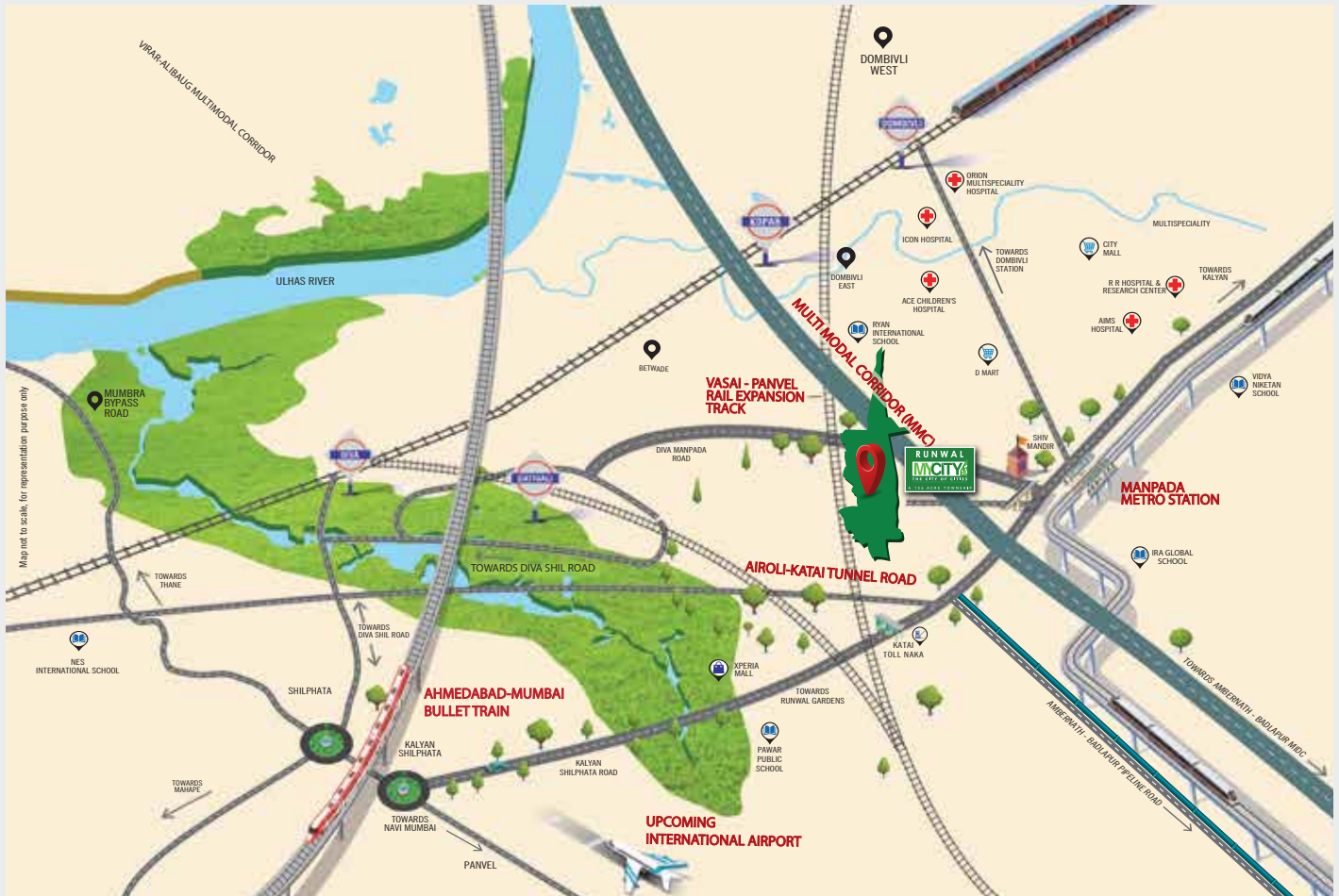
Ahmedabad Mumbai Bullet train

# UNINTERRUPTED COMFORT.

Stay amid serenity.

With your home strategically located within the radius of all the important landmarks and 7 large natural lakes with a 32 km waterfront, you no longer have to go the distance to take a break from your routine. With a locale that comes with plenty of opportunities, get used to living life without restraints.

# SOCIAL INFRASTRUCTURE



## CONNECTIVITY

- Kalyan - Shilphata Road - 1.5 km
- Dativali - 2 km
- Diva - 3.5 km
- Dombivli - 6.5 km



## RETAIL & RECREATION

- City Mall
- D Mart
- Xperia Mall



## SCHOOL

- NES International School
- Royal International School
- Ira Global School
- Pawar Public School
- Vidya Niketan School



## HOSPITALS

- AIMS Hospital
- Orion Multispeciality Hospital
- ACE Childrens Hospital
- Icon Hospital
- RR Hospital Research Centre





ARTISTS IMPRESSION

# RUNWAL MYCITY

## A city, that has it all.

Step into a township that puts your needs and convenience first with commercial hubs, educational institute, healthcare facilities, and recreational areas, all of them just a few minutes away from your exquisite residence. A place with everything that you need under the sun so that you get to experience **life uninterrupted.**

ARTISTS IMPRESSION



ARTISTS IMPRESSION

# UNINTERRUPTED EXPANSE.

A 156-acre development township  
to call your home.

An expansive integrated township, sprawling across 156 acres, offering 1, 2, and 3 BHK residences with a sports complex spread over 5 acres, central greens spread over 6 acre, and 32 acres of open spaces across the entire township.



ARTISTS IMPRESSION

# UNINTERRUPTED RECREATION

## Be a part of the talk of the town.

Here's a township with everything that you need and want. Now get township amenities as well as dedicated amenities for each residential pockets to brighten up a dull day. With its endless recreation and rejuvenation facilities, green spaces, interactive corners, sports arena, you'll barely need to step out of Runwal MyCity.

IMAGE FOR REPRESENTATION PURPOSE



ARTISTS IMPRESSION



# RESIDENTIAL POCKETS

Spread across 156 acres for ample space.



ACTUAL IMAGE



## DEDICATED CLUBHOUSE



## DEDICATED CAR PARKING



IMAGE FOR REPRESENTATION PURPOSE



# HEALTHCARE FACILITY

State-of-the-art care.



IMAGE FOR REPRESENTATION PURPOSE



IMAGE FOR REPRESENTATION PURPOSE



# COMMERCIAL OFFICES

Global standards in local reach.



# SHOPPING

Retail and high-street choices.



ARTISTS IMPRESSION



IMAGE FOR REPRESENTATION PURPOSE



# EDUCATIONAL INSTITUTE

Ryan International School  
spread across 1 Lac sq.ft.

\*proposed



## WIDE ROADS

18m, 24m and 30m  
congestion-free roads



ARTISTS IMPRESSION



IMAGE FOR REPRESENTATION PURPOSE



## OUTDOOR CAFÉ

Sit-out style cafe with  
green views

\*proposed plan





## CENTRAL PARK

Runwal MyCity has over 6 acres of interactive spaces spread for your rejuvenation and the break that you need every day.



IMAGE FOR REPRESENTATION PURPOSE



## SKATING RINK

Recreational area for kids



## JOGGING TRACK

Active life just a few  
steps away



ARTISTS IMPRESSION



IMAGE FOR REPRESENTATION PURPOSE



# YOGA GARDEN

Natural healing



# MEDITATION MOUNDS

Mindfulness uninterrupted

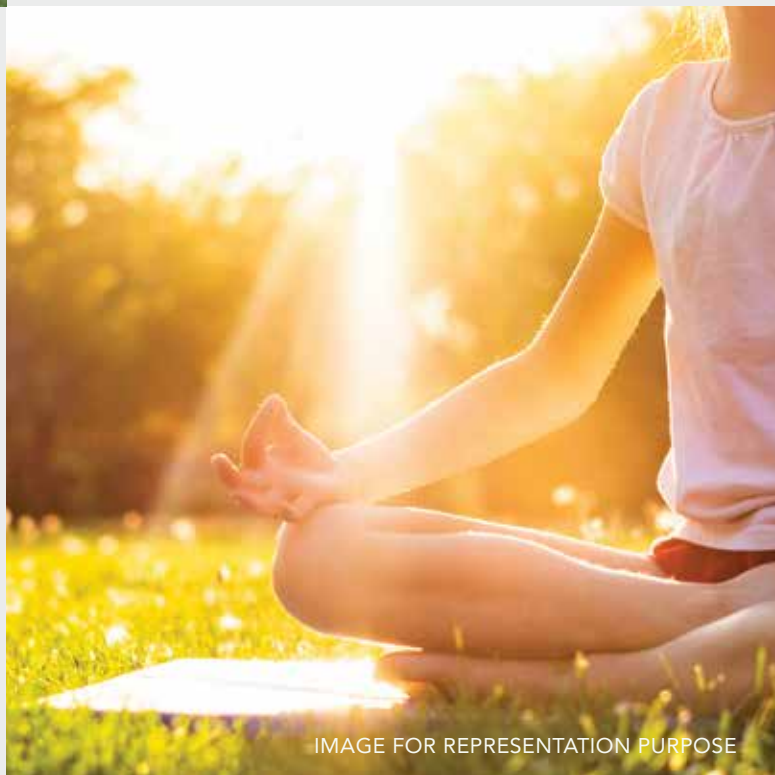


IMAGE FOR REPRESENTATION PURPOSE



## PET'S PARK

Exercise pets off-leash

IMAGE FOR REPRESENTATION PURPOSE



## OPEN-AIR THEATRE

Watch blockbusters in the  
lap of open skies



ARTISTS IMPRESSION



ARTISTS IMPRESSION

## SPORTS ACADEMY

Spread across 5 acres, Runwal MyCity gives you a plethora of opportunities to please your sporty side and the freedom to enjoy sports without having to shell out elsewhere.



IMAGE FOR REPRESENTATION PURPOSE



## MULTIPURPOSE COURTS

Includes Volleyball,  
Gymnastic, Badminton and  
many other courts



## CYCLING TRACK

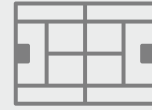
4600m of two-way stretch  
surrounded by greens



IMAGE FOR REPRESENTATION PURPOSE



IMAGE FOR REPRESENTATION PURPOSE



## TENNIS COURT

3 courts in the  
sports academy.



## CRICKET GROUND

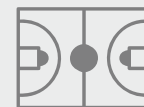
50m\*70m Width along with  
seating stands.



IMAGE FOR REPRESENTATION PURPOSE



IMAGE FOR REPRESENTATION PURPOSE



## BASKETBALL COURT

2 courts in the  
sports academy



## ATHLETIC TRACK

6-lane all-weather synthetic  
track fully equipped with  
facilities for all athletes

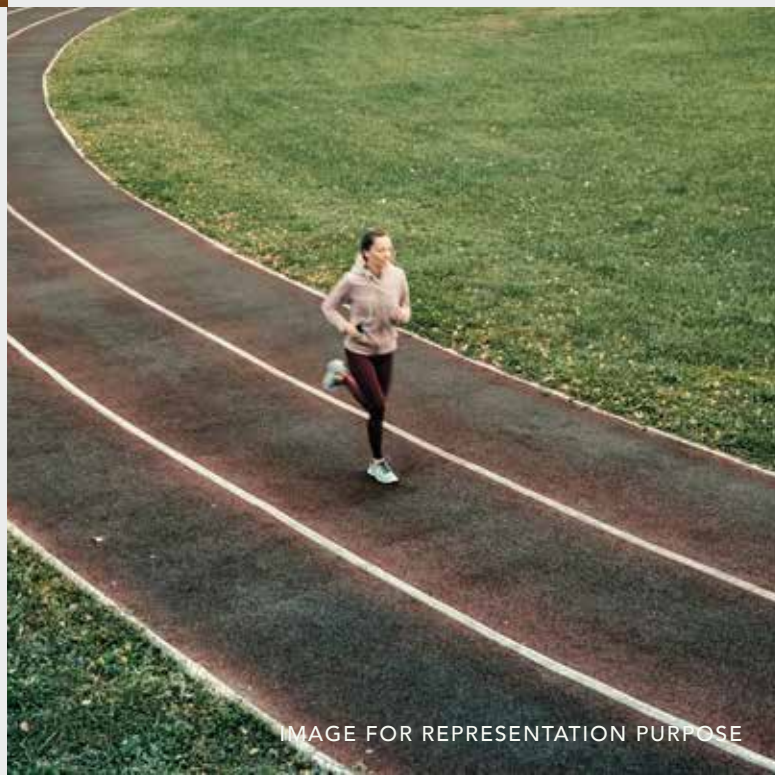


IMAGE FOR REPRESENTATION PURPOSE





IMAGE FOR REPRESENTATION PURPOSE



## FOOTBALL FIELD

6000sqm fifa standard football  
field with seating capacity.



## SWIMMING POOL

Dive in and relieve your stress

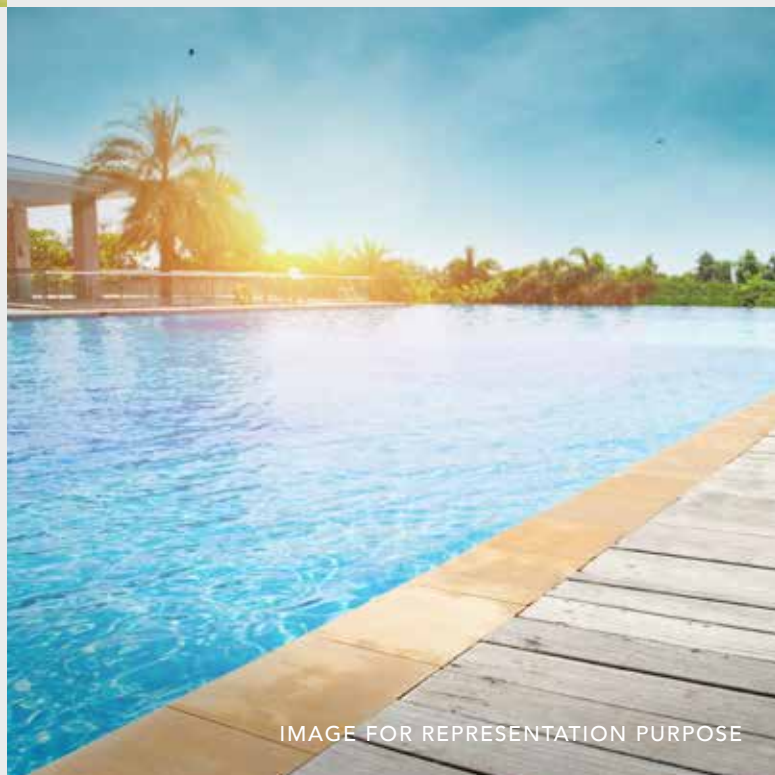


IMAGE FOR REPRESENTATION PURPOSE



ACTUAL IMAGES

**POSSESSION OFFERED TO OVER  
1000 FAMILIES**

# UNINTERRUPTED OPPORTUNITIES.

Step into a new city.  
Step up to a new lifestyle.

From Vista City with panoramic views to Blossom City with lush botanical gardens, and Smart City with state-of-the-art amenities, Runwal MyCity offers a balanced blend of nature, technology, landscapes and much more.



IMAGE FOR REPRESENTATION PURPOSE



## Presenting, Vista City.

Spread across 8.5 acres with its 10 towers with 1, 2, and 3 BHK residences giving you the most pleasant views of Parsik Hills and Ulhas River, its 1.7 acres of green spaces to soothe your eyes, and its own set of amenities to make it your perfect home, Vista City is the picture-perfect home for you.





**UNINTERRUPTED BEGINNINGS.**  
Live smarter, live better.



ARTISTS IMPRESSION

## Presenting, Smart City.

Take a breath of fresh air and experience a sense of serenity away from the chaos in Smart City. With 12 towers consisting of 1, 2, and 3 BHK residences, Smart City is truly the heart of Runwal MyCity.

# YOUR KIND OF BREAK.

Packed with every amenity to make your life comfortable, it is your little piece of heaven. A long day at work will no longer be the only highlight of your day.

## A M E N I T I E S



1) Clubhouse



1a) Gymnasium



1b) Party Hall



1c) Indoor Games



1d) Reading Lounge



2) Party Lawn



3) Jogging Track



4) Multipurpose Court



5) Reading Corner



6) Elderly Social Space



7) Picnic Area



8) Youth Corner



9) Seasonal Garden



10) Performance Area



11) Central Green



12) Stepped-lawn Seating



13) Colour Garden



14) Checkered Play Area



15) Green Play Area



16) Fitness Area



17) Meditation Zone



18) Leisure-stepped Seating



19) Kids' Playscape



20) Barbecue Area

# MASTER PLAN LAYOUT FOR SMART CITY





Presenting, Blossom City.

**UNINTERRUPTED PROSPERITY.**  
Bloom into a better tomorrow.



ARTISTS IMPRESSION



ARTISTS IMPRESSION

Indulge yourself in Blossom City with 12 stunning towers, where the air is filled with the fragrance of flowers, lush greens, top-of-the-line amenities, and endless opportunities.

# THE ESSENCE OF A MEMORABLE LIFE.

Find yourself amid a range of amenities at the largest podium spread over 75,000 sq. ft. (1.7 acre) curated for all your family's needs and recreation.

## A M E N I T I E S



1) Clubhouse



2) Party Lawn



3) Multipurpose Court



4) Performance Area



5) Strolling Path



6) Playground



7) Yoga Lawn



8) Outdoor Fitness



9) Interactive Playground



10) Toddlers' Play Area



11) Seasonal Garden



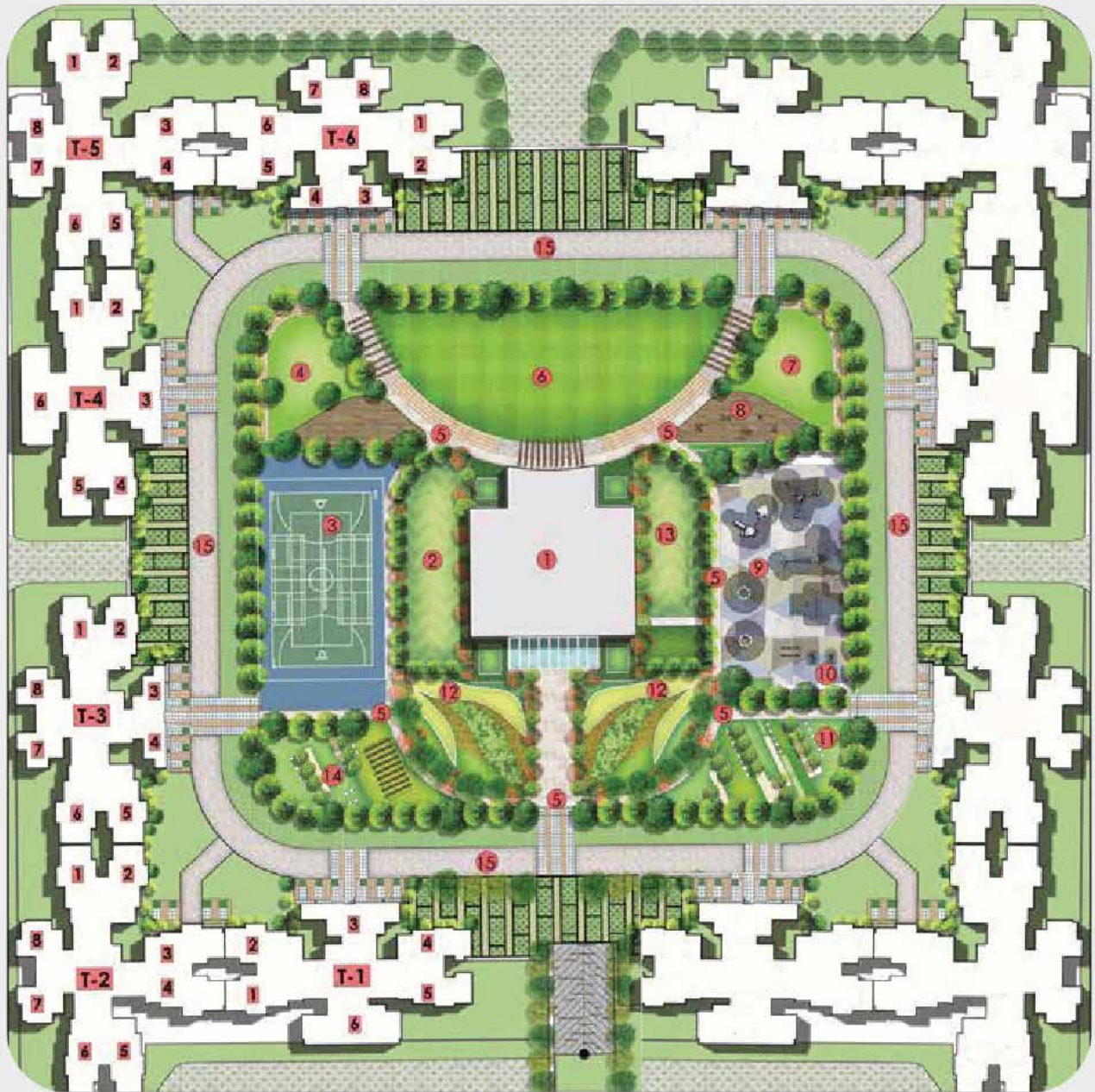
12) Barbeque Area



13) Elderly Seating



14) Jogging Path



# RUNWAL

Established in 1978, the Runwal Group is one of Mumbai's premier real estate developers, operating in the residential, commercial and organised retail verticals. With a robust track record of 51 delivered projects, with about 20,000 families living happily, the group has continuously striven to keep the customer as a focal point in the designing, planning, and construction of all its projects. Today, the group's steadfast focus on quality has led it to become an industry leader and a market-driven construction company, renowned for trust and quality, along with on-time delivery.



## RESIDENCES ONGOING PROJECTS

Runwal Anthurium  
Runwal Eirene  
Dahlia - Runwal Garden City  
Runwal Elegante  
The Residence  
Nirvana  
Runwal Pearl  
Runwal Elina  
Runwal Serene  
The Reserve  
The Sanctuary  
The Central Park - Phase 1

## TOWNSHIP

MyCity, Dombivli

## MALLS

R City Mall, Ghatkopar  
R Mall, Mulund (W)  
R Mall, Thane  
R Odeon, Ghatkopar (E)

## OFFICES

R Square  
R City Offices

# WE PROMISED. YOU TRUSTED. WE DELIVERED.

20 Million Square Feet Delivered

51 Delivered Projects

20 Thousand Happy Families

14 Ongoing Projects



**RUNWAL**  
**MYCITY**  
**THE CITY OF CITIES**  
**A 156 ACRE TOWNSHIP**

**022 62810321**

**mycity@runwal.com**

**Site: Diva Manpada Rd., Off Kalyan Shil Rd., Dombivli, Maharashtra - 400612.**

MahaRERA registration number MyCity Phase I Part I - P51700000528, Phase I Part II - P51700009168, Phase I Cluster 4 - P51700008440,  
Phase II Cluster 5 Part I - P51700019085, CLUSTER 5 PART II, - P51700032157, CLUSTER 5 PART III - P51700027171 Available on the website <https://maharera.mahaonline.gov.in>

The images and other details herein are only indicative. The Developer / Owner reserves the right to change any or all of these in the interest of the development, as per provision of law. Artist's impressions are used to illustrate amenities, specifications, images and other details. Tolerance of +/- 3% is possible in the unit areas on account of design and construction variances. All brands stated are subject to final decision of the project architect. This electronic / printed material does not constitute an offer and/or contract of any type between the Developer / Owner and the recipient. No booking or allotment shall be deemed to have been made on the basis of this electronic / printed material. Any Purchaser / Lessee of this development shall be governed by the terms and conditions of the agreement for sale / lease entered into between the parties, and no details mentioned in this electronic / printed material shall in any way govern such transactions unless as may be otherwise expressly provided in the agreement for sale/lease by the Developer / Owner. The Developer / Owner does not warrant or assume any liability or responsibility for the accuracy or completeness of any information contained herein. Project presently financed by ICICI Bank Ltd. and NOC / permission of ICICI Bank Ltd. will be obtained for sale of property, if required. This electronic / printed material has been created keeping in mind the provisions of the Real Estate (Regulation and Development) Act, 2016 (RERA) applicable for projects in Maharashtra. You are required to verify all the details, including area, amenities, services, terms of sales and payments and other relevant terms independently with the Developer's sales team only, by physically visiting the project site and the authorised website of RERA. You are requested NOT to visit any unauthorized or unverified website/broker (online / offline) to receive any information about any projects of the Developer and/or its sister concerns. \*T&C apply. All Inc doesn't include on possession charges. Image for representation purpose. \* The photographs, images, videos, plans, drawings, sketches, renderings, pictorial and graphical representations, specifications, illustrations, other information etc. contained herein are typical stock/standard photography used by the industry at large and/or pure imagination, and are intended to indicate a conceptual and aspirational lifestyle. The views, landscape, aerial shots contained herein are also from typical stock/standard photography. None of the aforementioned is indicative of how the larger or any part thereof looks at present and/or may eventually look in future and/or may be designed, constructed and/or completed.\*