

#OfficesOfTheNewOrder



MOVE TO INDIA'S FIRST
PHYGITAL
PHYSICAL+DIGITAL WORKPLACE

SAFE • INTUITIVE • CONVENIENT • SMART • INDULGENT • EXPERIENTIAL



THE FUTURE OF OFFICES IS PHYGITAL

Commercial workplaces equipped with innovations of tomorrow.



The perfect amalgamation of

PHYSICAL + DIGITAL = PHYGITAL

Imagine an innovative tech-driven space that streamlines day-to-day activities into seamless experiences in the new normal.

Evolving to a phygital space is an essential upgrade in today's time. Phygital spaces are convenient, intuitive, safe, experiential, smart and indulgent.

Parinee is pioneering a Phygital commercial space that can easily connect you with your expansive business plans & contribute towards your overall growth, yet offer more safety at work.

Welcome to offices of the new order

PHYGITALLY SMART SPACES

A Game-Changer In Commercial Real Estate Of Tomorrow

#OfficesOfTheNewOrder



ULTRA-MODERN FEATURES



Unique QR Code For
Safe & Easy Entry



CCTV feed based
parking management



Automatic number plate
recognition for Vehicles



Automated Contactless
Elevators



Heat mapping for most busy
areas on the premises



Face scan detection

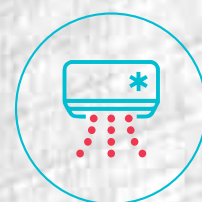
THE FUTURISTIC COMMERCIAL HUB OF WORLI'S SKYLINE



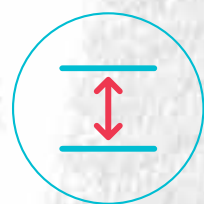
PREMIUM OFFICES EQUIPPED WITH GRADE A+ FEATURES



46 Floors of Elevation with Glass Facade & Fenestrations



Air-conditioned offices



Ceiling Height of 13 ft.



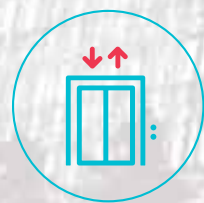
24*7 Security & CCTV Surveillance



Robotic Car Parking



Offices with attached toilets and common toilets on every floor.



20 High speed Lifts.



Offices starting from ~ 1.85 Crores



WHY PARINEE BRILLIONS

IS THE BEST COMMERCIAL INVESTMENT?



Once In A LifeTime Opportunity to Invest in India's First Phygital Commercial Space



Higher Return on Investment and Rental Yield



Own A Commercial Space in South Mumbai at Worli



Phygitally equipped modern glass facade enhanced with fenestration



Vastu-Ccompliant Flexible Office Spaces.

WORLI IS THE PRIME DESTINATION FOR COMMERCIAL ASPIRATIONS & INNOVATIONS



Actual View

Worli being one of the original seven islands and a prime location of South Mumbai, it is primarily the busiest commercial district. The location offers excellent connectivity to various part of the cities and connects you with incredible prospects to grow.



RAPIDLY GROWING URBAN INFRASTRUCTURE

Close to Bandra-Worli Sealink Commercial Hubs, Upcoming Metro Station & Premium Residential Zone



BETTER YIELD

Once a traditional textile mill location, now a prime commercial destination.



RAILWAY STATIONS

- Lower Parel - 700mts
- Curry Road -1.6km
- Prabhadevi (Elphinstone) - 1.8km
- Dadar - 3.5km



UPCOMING METRO

- Worli metro station
- Acharya Atre Chowk (Worli Naka) - 750 mts.



HIGHWAYS & SEALINK

- Bandra-Worli Sealink: 5 minutes
- Western-Suburb: 15 minutes
- Central Suburbs: 20 minutes
- Coastal Road

PRIME LOCATION ADORNED WITH CONVENIENCES IN CLOSE PROXIMITY



HOSPITALS

- Global – 2.6km
- Tata Memorial – 3.2km
- Jaslok – 4km
- Hinduja – 4.9km



BUSINESS HUBS

- Peninsula Corporate Park - 650mts
- Marathon Futurex – 1.5km
- Kamala Mills - 1.5km
- One World Center - 1.8 km



STAR HOTELS

- St Regis - 450mts
- Four Seasons - 700mts
- ITC Grand Central – 2.5km



FINE DINING

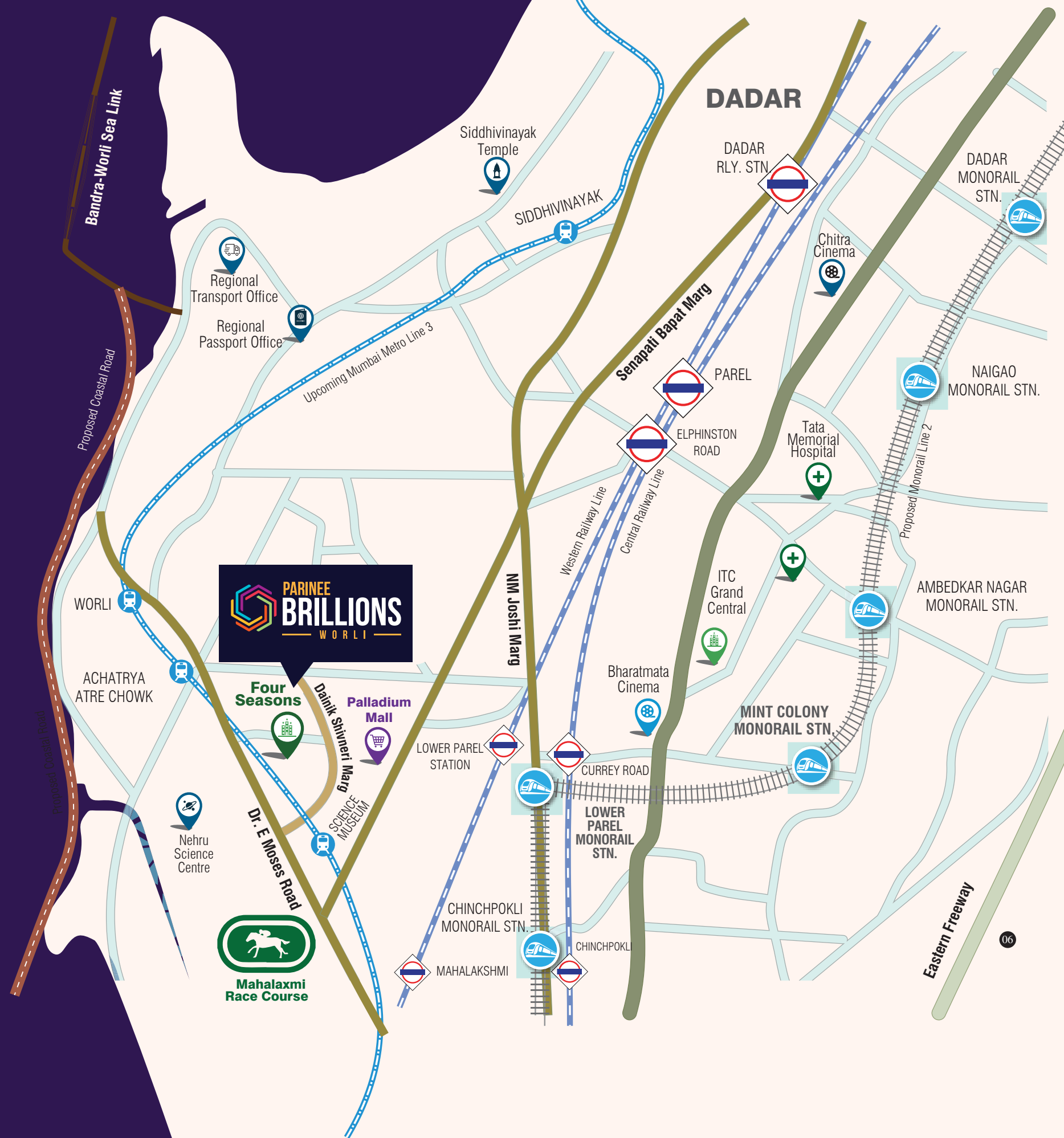
- Mekong
- The Sahib Room and Kipling Bar
- Qualia
- Bastian
- Aer and San-Qi
- Bombay Canteen
- Palladium
- High Street Phoenix



LUXURY RESIDENCES

- World towers
- Trump tower
- The Park
- Runwal Reserve
- Indiabulls Blue
- Vivarea
- Imperia
- Omkar 1973
- Oberoi 360
- Artizia
- Raheja Legend
- Ahuja towers

ARABIAN SEA



A PHYGITAL LANDMARK EQUIPPED WITH INDULGENCES OF TOMORROW

Modern workplace blended with a host of leisure and recreational features to ensure the perfect work life balance.

#EXCLUSIVE FEATURES & SERVICES



Food Court



International Business Centre



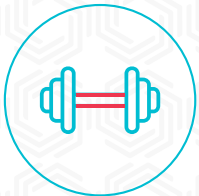
Exclusive Restaurants



Spa & Salons



Coffee Lounge



Gym

not part of common amenities





BUILDING GREAT LANDMARKS FOR OVER 50 YEARS

Parinee is a prestigious real-estate organization, backed by its over 50-year-old legacy. Late Shri. Dilip Shah laid the foundation of the construction company in Mumbai with a vision to offer an extraordinary life decorated with opulence & an elite lifestyle.

The Group' has successfully completed around 15 lakh sq. ft of commercial & residential projects, establishing itself as a prominent player in the realty sector in India. Parinee aspires to contribute to the country's infrastructural growth through housing and commercial edifices using world-class technology, innovation, and designs.

A bouquet of varied residential and commercial developments across the city.

- Renowned for innovative approach in construction, due to which the revenue reached the ₹ 4000 crore benchmark.
- Over 7 projects spread across the city in various stages of development.
- Over 15 uber modern Residential & Commercial projects completed.
- Ongoing developments: 2 Million Sq. Ft
- Upcoming developments: 2 Million Sq. Ft
- Delivering better infrastructure to the citizens of Mumbai

COMPLETED PROJECTS



Crescenzo is a landmark commercial project and one of the prides of Parinee Group. This 20-storey edifice is a Grade A commercial structure, which was completed in a span of 2 years.

CURRENT PROJECTS



5 BHK Premium Residences in Juhu
MahaRERA Registration No.:
P51800001785

Ultra-luxe 3 & 4 BHK & Penthouse Residences in Juhu
MahaRERA Registration No.:
P51800003709



UPCOMING PROJECTS

2 Million Sq.Ft across - JVPD, Versova, Khar, Kandivali & Borivali



OM OMEGA SHELTERS PRIVATE LIMITED

1ST FLOOR, 102 AND 103, SMAG HOUSE, SAROJINI ROAD,
EXTENSION, VILE PARLE WEST, Mumbai - 400056

Website: www.parinee.com |  **+91 70902 00006**

The Project is registered under MahaRERA as 'PARINEE EMINENCE PHASE 1' having reg. no. "P51900015555"
and details are available on <https://maharera.mahaonline.gov.in> under registered projects.

STRATEGIC PARTNER

