

WITH YOU, JUST THE WAY YOU IMAGINED



सपनों को
अपनों सा साथ



NISARG GREENS
AMBERNATH EAST

— PHASE - II A —

MahaRERA REGISTRATION NO.: P51700008839
<https://maharera.mahaonline.gov.in>

A 25 ACRE EXPANSIVE WORLD OF
NATURE & LIFESTYLE WITH YOU
FOR A LIFETIME

FUTURE
DEVELOPMENT

PHASE - II A
(RCC COMPLETED,
WORK IN FULL SWING)

PHASE - I
(DELIVERED BY 1 YEAR
BEFORE THE PROMISED
POSSESSION DATE)

MULTI-SPECIALITY
HOSPITAL
(FUTURE DEVELOPMENT)

SHOPPING CENTRE &
MULTIPLEX
(FUTURE DEVELOPMENT)

EDUCATIONAL
INSTITUTE

BANQUET HALL
(WORK IN FULL SWING)

ENTER A WORLD IMAGINED FOR YOUR FUTURE

PROJECT HALLMARKS - PHASE - II A:

- 6 Towers of 18 Storeys (4 Towers - 1 BHK, 2BHK Compact, 2 BHK Luxury Homes and 2 Towers - 2 & 3 BHK Deluxe Homes)
- Luxury Community Living
- Expansive Open Spaces
- Designer Landscaped Gardens
- Close to Ambarnath Station
- Hospital Attached to Upcoming Project
- School & College Adjacent to Project



LIVE IN A WELL-PLANNED
COMMUNITY THAT RISES
ABOVE YOUR EXPECTATIONS

PHASE - II A
(RCC COMPLETED,
WORK IN FULL SWING)

PHASE - I
(DELIVERED BY SEPT 2017,
1 YEAR BEFORE THE PROMISED
POSSESSION DATE)



ACTUAL PHOTOGRAPH SHOT OF THE SITE

EMBRACE A RICH LIFESTYLE
WITH A WORLD OF CONVENIENCES
YOU ALWAYS DESIRED



ACTUAL PHOTOGRAPH SHOT OF THE SITE



KID'S PLAY AREA



HI-TECH GYMNASIUM



MINI FOOTBALL COURT

EMBRACE A RICH LIFESTYLE
WITH A WORLD OF CONVENIENCES
YOU ALWAYS DESIRED



ACTUAL PHOTOGRAPH SHOT OF THE SITE



KID'S PLAY AREA



HI-TECH GYMNASIUM



MINI FOOTBALL COURT



AMPHITHEATRE



CLUBHOUSE WITH GYMNASIUM OVERLOOKING THE SWIMMING POOL



MULTI-PURPOSE COURT



NET CRICKET



CENTRAL GARDEN



DAFFODIL - A
EVEN TYPICAL FLOOR PLAN



DAFFODIL - A
ODD TYPICAL FLOOR PLAN





DAFFODIL - B
EVEN TYPICAL FLOOR PLAN



DAFFODIL - B
ODD TYPICAL FLOOR PLAN

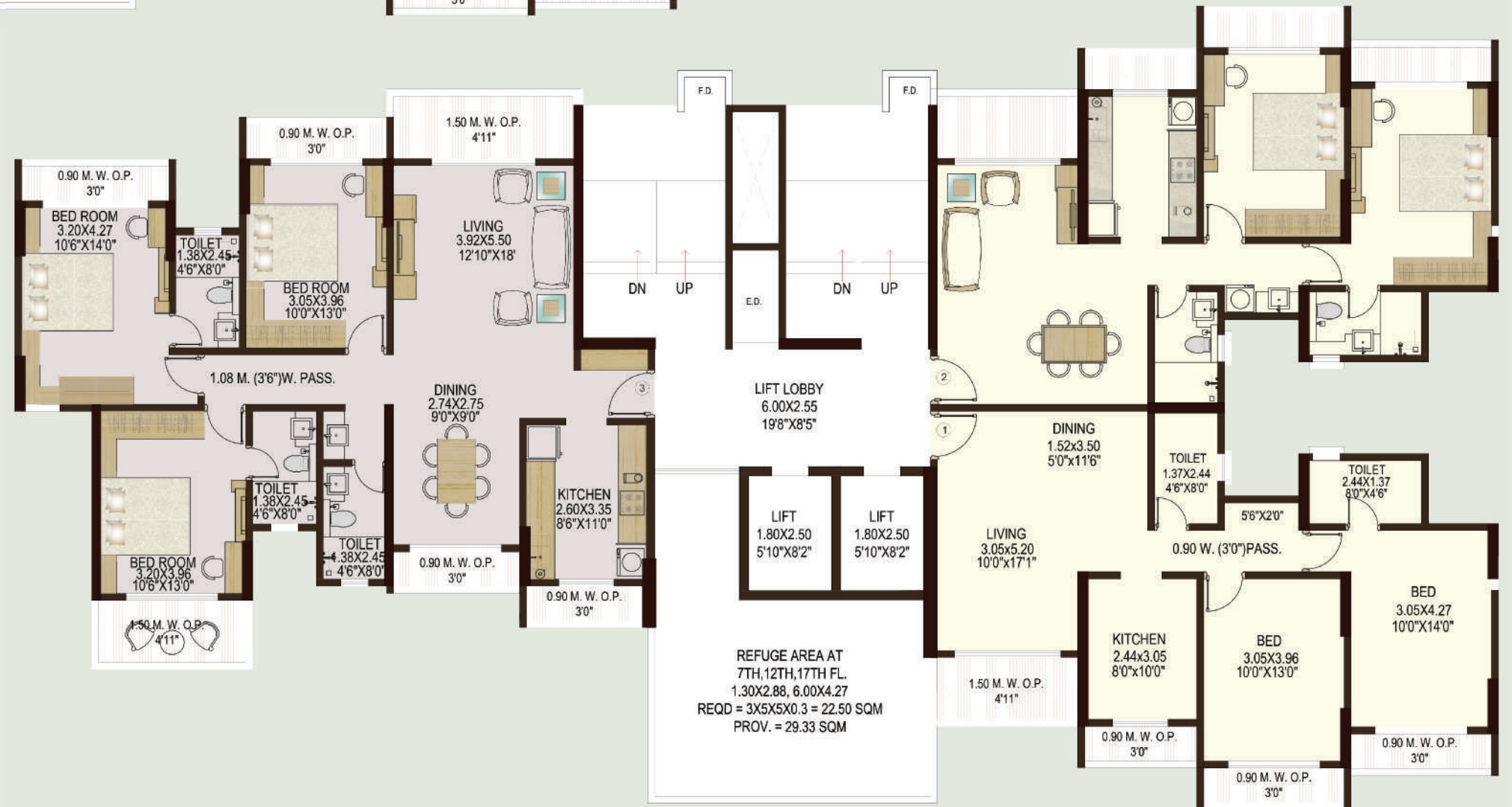


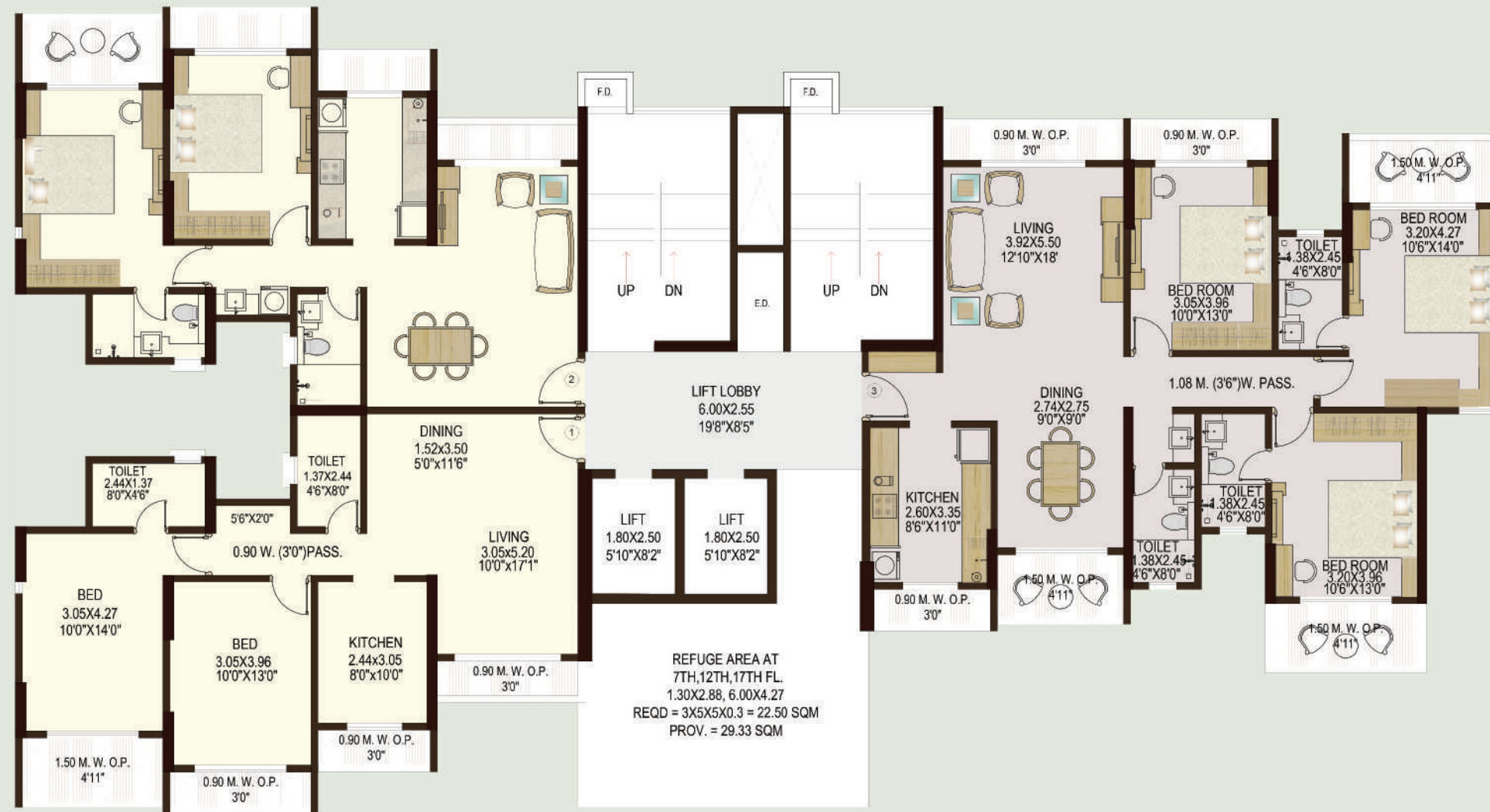


LOTUS - A
EVEN TYPICAL FLOOR PLAN



LOTUS - A
ODD TYPICAL FLOOR PLAN

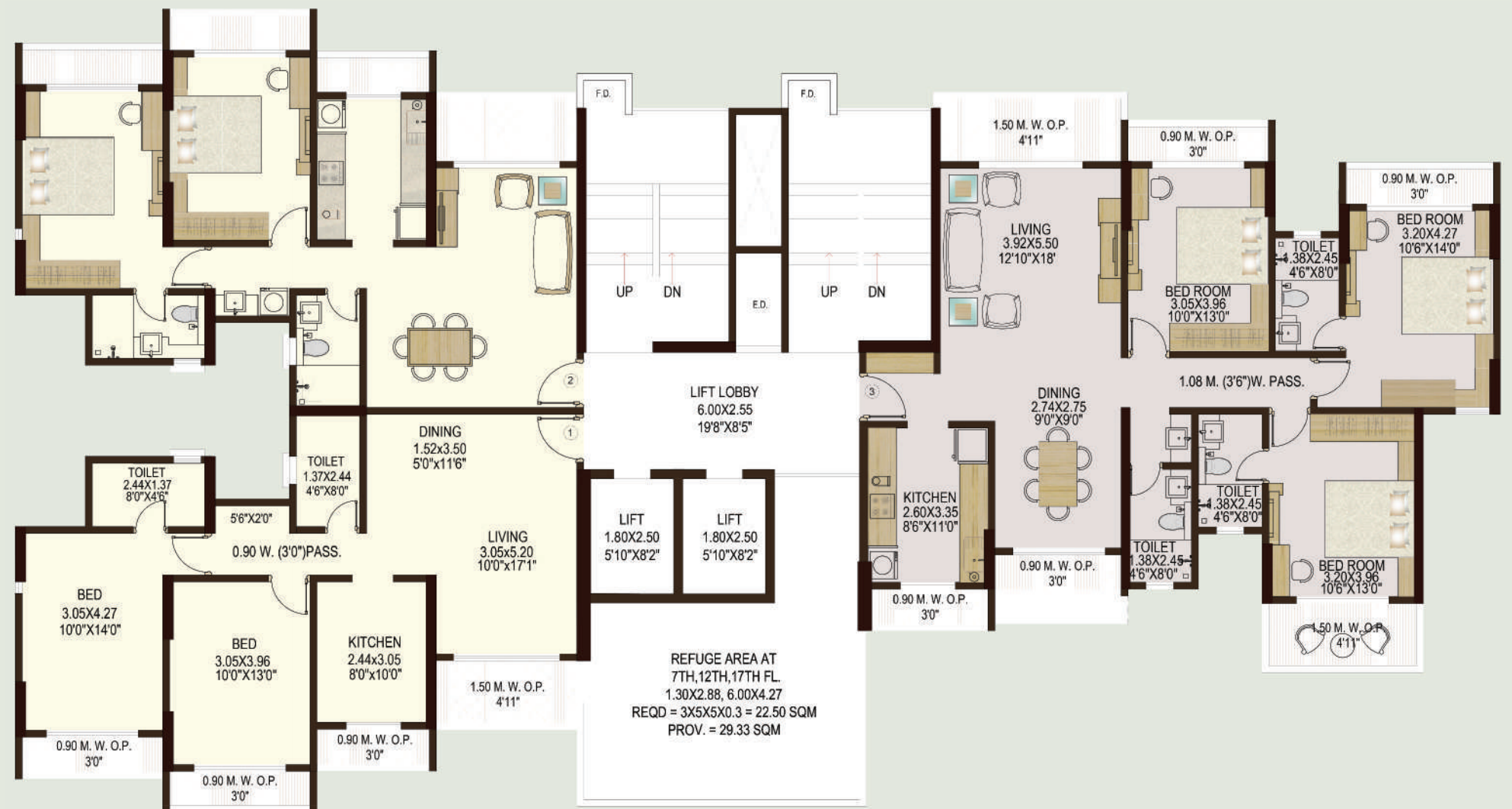




LOTUS - B
EVEN TYPICAL FLOOR PLAN



LOTUS - B
ODD TYPICAL FLOOR PLAN





SUNFLOWER - E
EVEN TYPICAL FLOOR PLAN



SUNFLOWER - E
ODD TYPICAL FLOOR PLAN





SUNFLOWER - F
EVEN TYPICAL FLOOR PLAN



SUNFLOWER - F
ODD TYPICAL FLOOR PLAN





Artist's Impression

PROJECT AT A GLANCE

PROJECT HALLMARKS - PHASE - II A

- 6 Towers of 18 Storeys (4 Towers - 1 BHK, 2BHK Compact, 2 BHK Luxury Homes and 2 Towers - 2 & 3 BHK Deluxe Homes)
- Luxury Community Living
- Expansive Open Spaces
- Designer Landscaped Gardens
- Close to Ambarnath Station
- Hospital attached to Upcoming Project
- School & College adjacent to the project

LOCATION STANDPOINTS

- Walkable distance from Ambarnath Station
- 30 mins. from Proposed International Airport
- Educational Hub in Neighbourhood
- Reputed Hospital in Complex
- Well-connected through Central Railway
- Ambarnath-Badlapur Pipeline Road nearby

INTERNAL SPECIFICATIONS

Structure

- Earthquake resistant structure
- Environment friendly construction

Doors & Windows

- Moulded Shutter with Polish/enamel Paint
- All other Doors will be Flush/moulded with Enamel Paint
- Powder-Coated Aluminium French Windows

Kitchen

- Polished Granite Platform with Dado Tiles up to 2 ft.
- Stainless Steel Sink

Elevators

- Hi-speed Elevators
- Generator Back-up System

Sanitary Fittings

- Anti-skid Ceramic Tiles for Flooring / Glazed Ceramic Tiles Dado up to 7 ft.
- Concealed Plumbing with hot and cold Water Mixer
- A-class Sanitary Fittings
- Chromium Plated fittings
- Good Quality Sanitaryware with Wash Basin and Water Closet

Flooring

- Vitrified Tiles in all Rooms

Electricals & Fixtures

- Branded ISI mark Electrical Switches
- Modular Switches
- MCB for Protection
- Concealed Wiring in Copper Conductor with adequate number of points
- AC point in all Bedrooms in 2 Towers of 2 & 3 BHK
- TV and Telephone points in Bedroom and Living Room
- Adequate Lighting of common areas
- Generator Back-up for Clubhouse, lifts and common areas
- Inverter Connection in every Apartment

Paints & Exteriors

- Internal Walls with Smooth Finish Plaster with Oil Bound Distemper
- External Walls with Sand-faced Plaster with Good Quality Cement / Acrylic Paint



BUILDING ICONS OF CONTINUED EXCELLENCE

A happy customer is the sign of a growing company. We not only abide by this principle but also make sure all projects at Nisarg Group fit perfectly on the benchmark. For us, client satisfaction is our foremost concern, and we implement this dedication towards building a long-term client relationship.

As a team of committed professionals, our focussed approach always ensure that we deliver what is committed. At Nisarg, we look at work as a medium to express our creativity and land as the very canvas to exercise it. Each project offers us an opportunity to transcend the very limits of human ingenuity while creating landmarks that stand the test of time. We derive our inspiration from the past to fuel our aspirations for the future. As a group, we are poised towards adopting new technologies that empower us to build quality lifestyles with a modern outlook and vision. Looking ahead, we are endeavouring towards a bright future built on the concrete base of quality, technology, performance and long lasting customer relationship.

Reach us at: info@nisarggroup.com



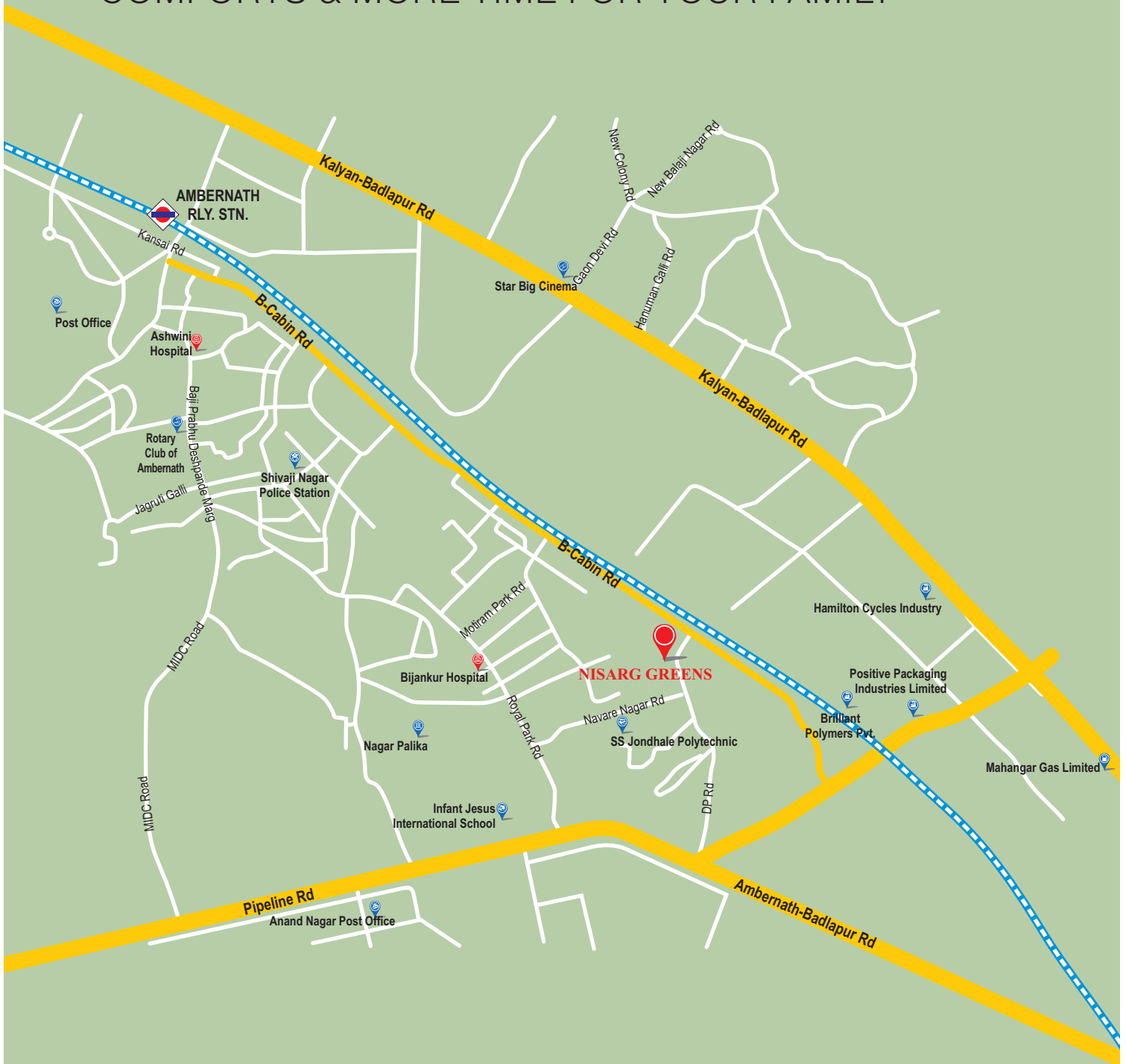
Actual Photograph

HYDE PARK

OUR FLAGSHIP PROJECT
AT KHARGHAR, NAVI MUMBAI

AMBERNATH (E)

A LOCATION THAT OFFERS ALL CONVENIENCES,
COMFORTS & MORE TIME FOR YOUR FAMILY



LOCATION STANDPOINTS:

- Walkable from Ambernath (E) Station
- 30 mins. from Proposed International Airport
- Educational Hub in Neighbourhood
- Bus Depot Nearby
- Reputed Hospital in Complex
- Well-connected through Central Railway
- Ambernath-Badlapur Pipeline Road in Vicinity



CALL:

Site Address: Plot No. RH-1, B-Cabin Road, Morivali, Ambernath (E), Thane - 421 501 | **Corporate Address:** 310, Devavrata Building, 3rd Floor, Sector 17, Vashi, Navi Mumbai - 400 703 | **Email:** info@nisarggroup.com
Website: www.nisarggroup.com

STRATEGIC PARTNER:

ANAROCK
VALUES OVER VALUE
MahaRERA Registration No. A5190000108
(Available at Maharashtra.mahaonline.gov.in)

Project Financed By

