



# EXCALIBUR

BY NAHAR

YOUR OWN LEGACY



[TAP TO ENQUIRE](#)

with Floor Plans

[TAP TO VISIT WEBSITE](#)

ACTUAL PHOTO OF 26TH LEVEL TERRACE LOBBY

# RESIDENTS ONLY CLUB

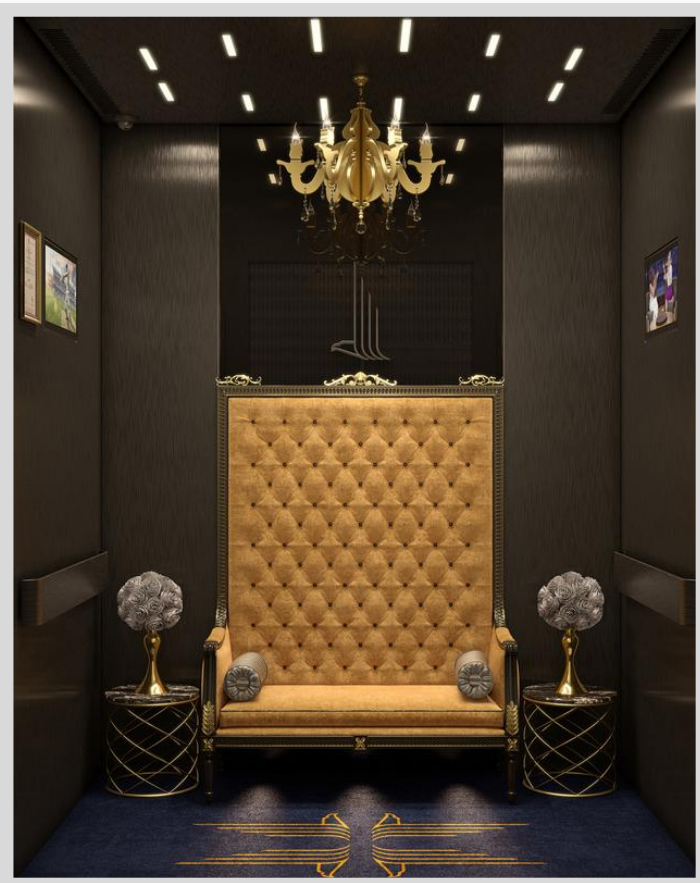
Club Excalibur is an exclusive, residents only space meant to cater to your leisure whims. Conceptualised along the lines of global private clubs this is the space where you will indulge and entertain equal parts. Club Excalibur ushers you into a rich spectrum of luxury and lifestyle that satiates the soul even as it indulges the senses, a perfect blend of energised atmosphere and sophistication with mind full design.

Club Excalibur has a unique set of personalised services and amenities which will cater to your every need. It is meant to create a feeling of Era gone by and legacy created by your own hands, whether it's a quiet moment to work alone or a place to connect with your loved ones.

## Club Excalibur Access Card



This is an image representation of a RFID card for members to access the amenities area of CLUB EXCALIBUR.



Actual photo of Excalibur branded hi-speed elevator



### TERRACE LEVEL

A perfect blend of beauty and functionality, true luxury is access to art. It doesn't need ceremonies to attract attention, the design speaks for itself.



### LEVEL 5

Burn your calories to make you look good in your Canali Tux. A fully equipped gymnasium at your closest convenience.



### CLUB LEVEL

Welcome to the level of leisure amenities designed to suit your needs. There is touch of timelessness that is built into the design, because we are striving to give you an extra ordinary experience that will stay with you forever.



### GROUND LEVEL

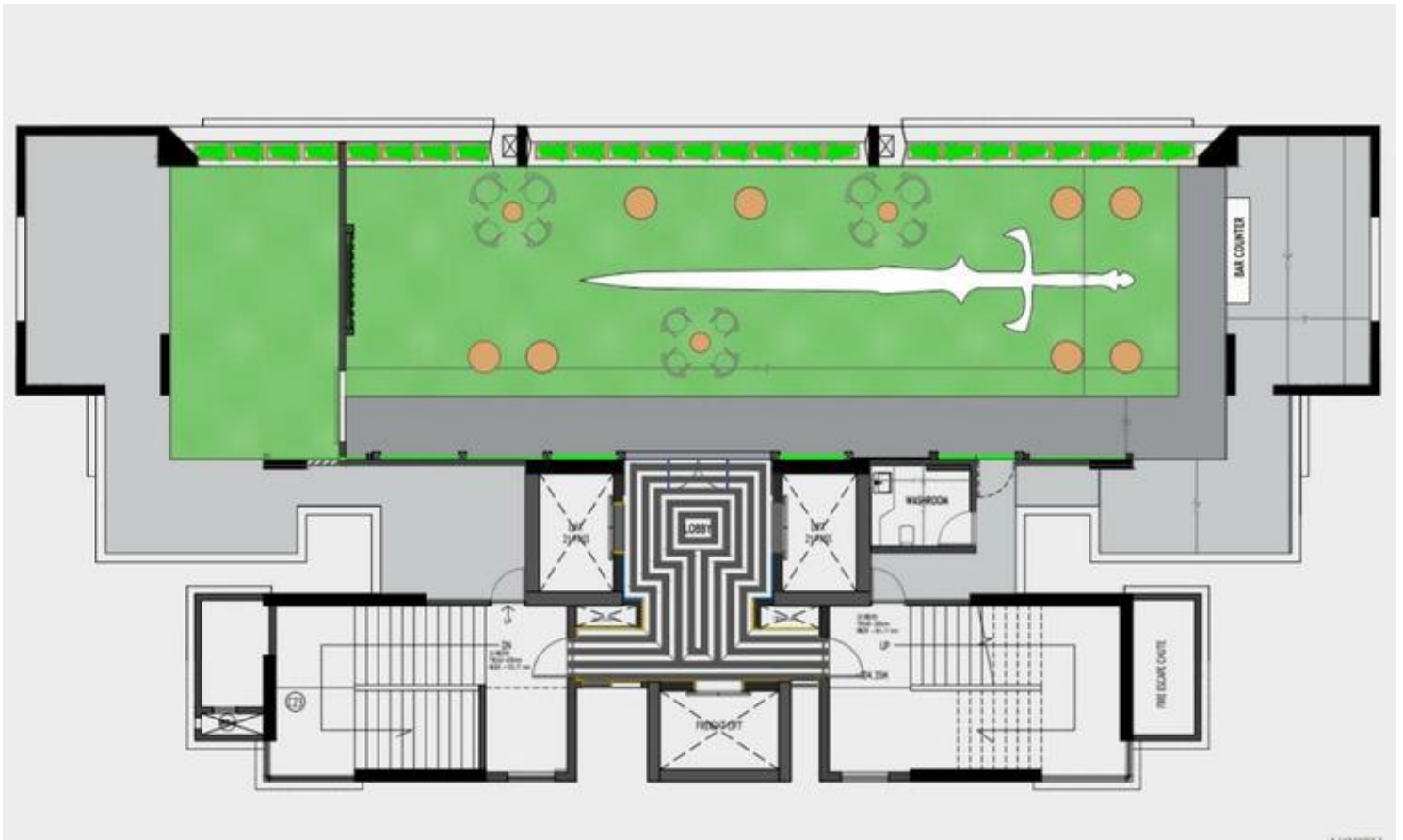
As soon as you enter the gates of Excalibur the intelligent use of materials and design meets your eye. The building and amenities design is motivated by Legendary King Arthur and his sword Excalibur which emanates splendor and strength.

# Sky Garden

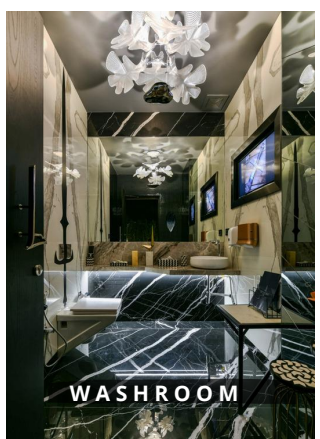
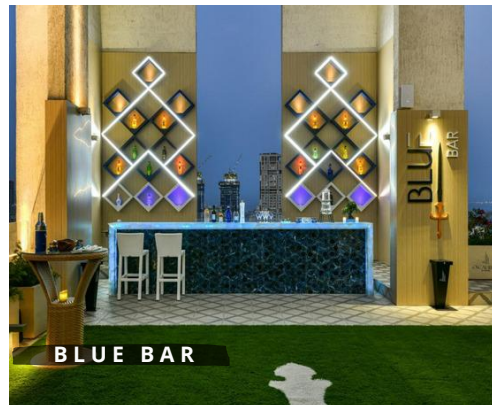


## LEVEL T

Excalibur by Nahar showcases how it juxtaposes its theme with Arthurian age, Links it with a princely legacy and poses in front of the scintillating greens of the race course in a perfect setting; embracing the surroundings with dominance and timelessness.



1. Green Wall	2870 sqft
2. Walking Path	470 sqft
3. Bar Counter	250 sqft
4. Total area off skygarden	2490 sqft
5. Terrace PT garden	922 sqft
6. Washroom	56 sqft

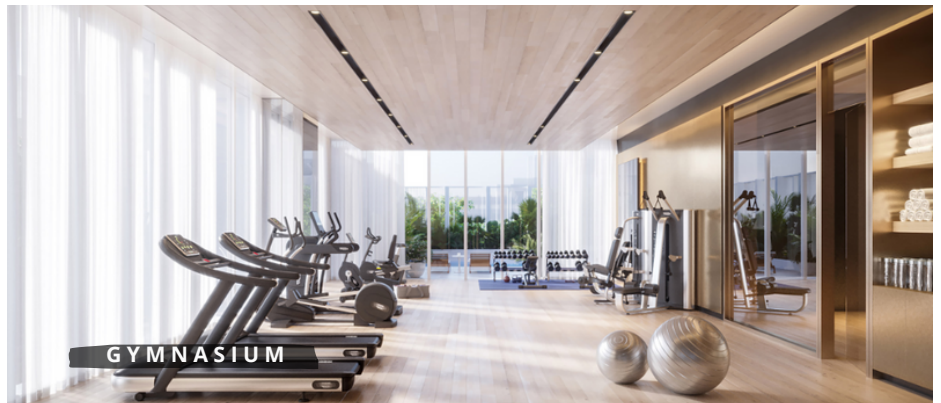




1. Reception/ lobby
2. Golf simulator room
3. Music room
4. Kids Club
5. Yoga space
6. Gymnasium

5

- 387 sqft
- 473 sqft
- 129 sqft
- 450 sqft
- 419 sqft
- 1030 sqft



ALL IMAGES USED ARE FOR GRAPHICAL REPRESENTATION PURPOSE ONLY.



<ul style="list-style-type: none"> <li>1. Lounge</li> <li>2. Cinema</li> <li>3. Salon</li> <li>4. Private Dining /Party Hall</li> <li>5. Lobby</li> </ul>	M	<ul style="list-style-type: none"> <li>431 sqft</li> <li>421 sqft</li> <li>207 sqft</li> <li>1155 sqft</li> <li>450 sqft</li> </ul>
---	---	---





1. Entrance Lobby

870 sqft.

2. Cornwall Library Waiting Lounge

207 sqft.

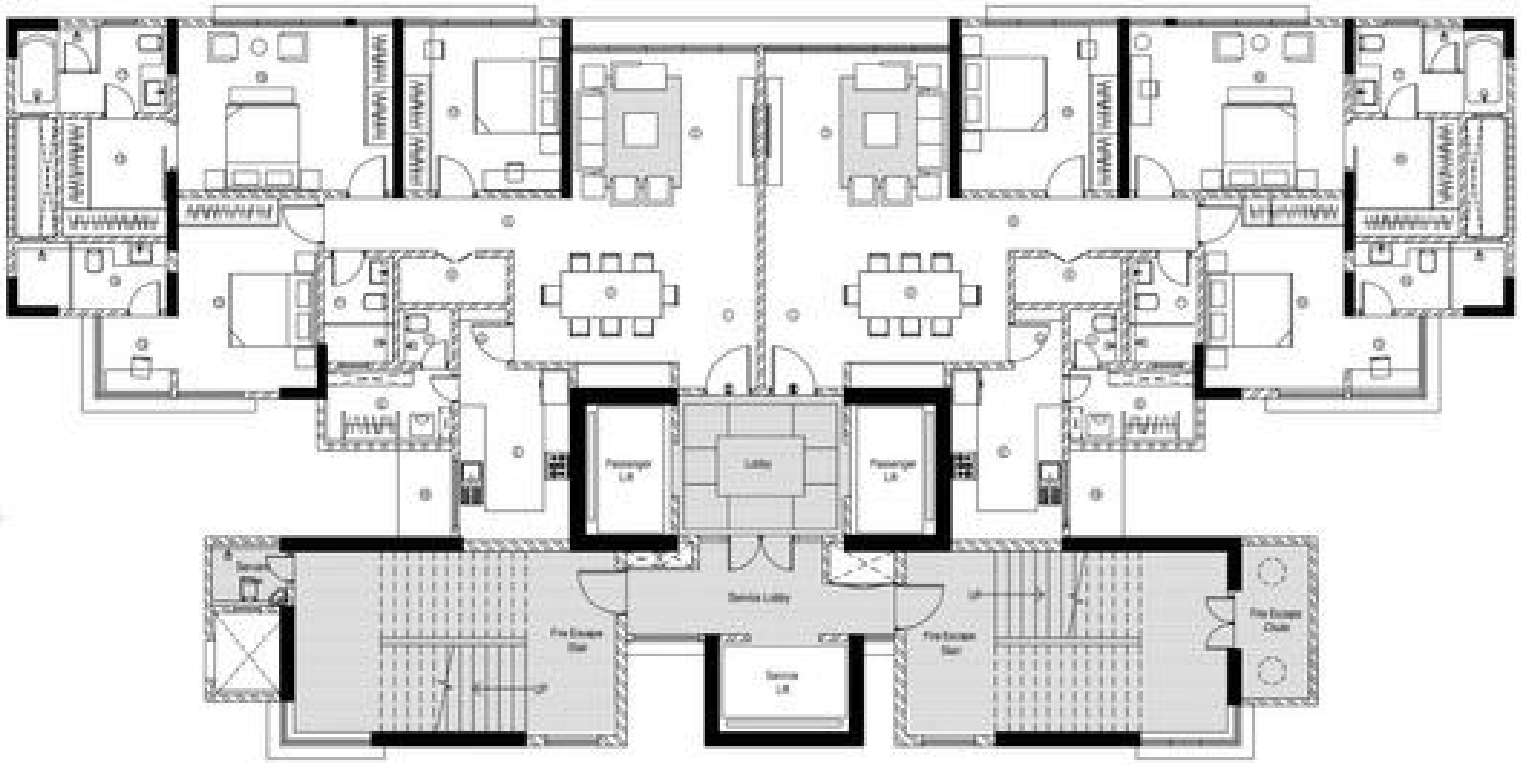
3. Reception

90 sqft.



ARTIST IMPRESSION

THE GREAT HALL



# FLOOR PLAN 3BHK

Only 2 apartments per floor for exclusivity.

## PROMOTER & ARCHITECT AJAY NAHAR SAYS

"Excalibur is designed with an asymmetrical form of flexible planning with column spacing in such a way that it's planned to optimize maximum views of Mahalaxmi Racecourse, light and cross ventilation in the apartment. As you enter the apartment you sense the expansiveness, with apartment having floor to floor 12 ft height which will lend a hand to design palatial ceiling. The apartments have a magnanimous family-centric, multifunctional living area, along with family size dining, prayer room. All apartments come with separate utility room next to the kitchen, maid's room for thoughtful conveniences."

**MAHA RERA CARPET: 1433 SQFT.**





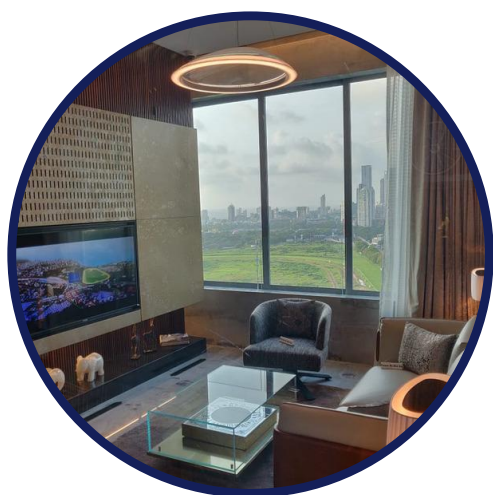
# SHOW FLAT

Thoughtfully designed homes that mirror your world views.

## ACTUAL PHOTOS OF SHOW FLAT



**DOUBLE LIVING**



**FAMILY ROOM**



**MASTER BEDROOM**

**MAHA RERA CARPET: 1752 SQFT.**

## Excalibur by Nahar has built a comprehensive COVID management system which includes the following parameters:



1. **Temperature & Mask checks** of visitors captured at gate and sent to residents via a mobile app
2. **Covid Meter**- to know if your daily staff is coming from containment zone.
3. **Aarogya Setu Integration**
4. **Quarantine facility**
5. **Emergency Alert** for immediate alarm to be raised.
6. **Smart Eye Attendance for staff**
7. **Leave at gate**- allows contactless delivery
8. **Healthcare at Home** enables easy and discounted access to medical e-consultations, pharmacy, deliveries and emergency ambulance services
9. **Vendor at gate** makes essential vendors available with slots to avoid crowding..

We at Excalibur take safety and security as an integral part of our culture and responsibility towards our employees, customers and our contractors.



### MIVAN CONSTRUCTION

Mivan formwork is the advanced formwork system made of strong and sturdy aluminum components that has great strength, durability, simple to install



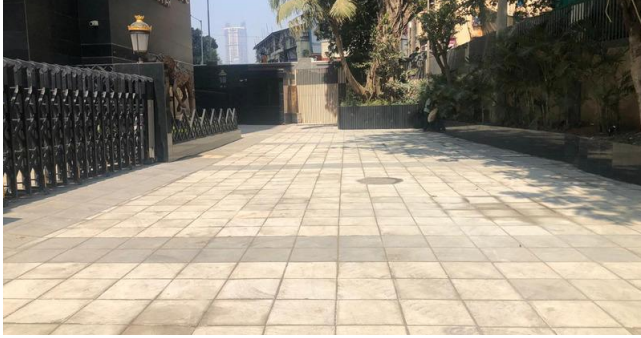
### FIRE SYSTEM

This building has installed a Vertical Spiral Escape Chute which is used for the rapid evacuation of people from high structures.



### DG BACKUP

Diesel Generator (DG) Backup covers Service lift, stack parking, car lifts, emergency lighting in common areas, fire pump, fire fighting service and water pumps.



## APPROACH ROAD

This 9m wide approach road to Excalibur is levelled, paved and beautified with plants and lights.

## THEMED LOBBY

Every floor lobby in Excalibur has its own different theme with a representation of a quote and its image.



## VIDEO DOOR PHONE

Already installed a video door phone set in every apartment.



**2 X HI SPEED  
ELEVATORS**



**SERVICE  
ELEVATOR**



**2 X  
CAR LIFT**



**STACK  
LIFT**

# ALL LEVELS

AMENITIES THAT COUNTS

## LEVEL T

CLUB EXCALIBUR



CONFERENCE ROOM



SKY GARDEN



WALKING PATH



BLUE BAR



YOGA



KIDS PLAY AREA



FIRE CHUTE



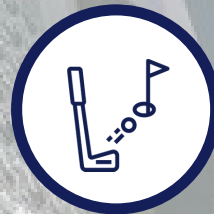
WIFI IN COMMON AREAS



GYMNASIUM



YOGA



GOLF SIMULATOR



KIDS CLUB



MUSIC ROOM



MIVAN CONSTRUCTION



DIESEL GENERATOR BACKUP



SALON



LOUNGE



MINI THEATER



PRIVATE DINING



PARTY HALL

## LEVEL 5

CLUB EXCALIBUR

## LEVEL M

CLUB EXCALIBUR

## LEVEL G

CLUB EXCALIBUR



3 TIER SECURITY



RECEPTION



LIBRARY



VALET



ST PLANT



RAIN WATER HARVESTING

# LOCATION BENEFITS

## HOSPITALS

5 MINS DRIVE

Jaslok Hospital, Global Hospital, Workhardt and many more

## 5 STAR HOTELS

5 MINS DRIVE

St. Regis, Four Seasons and ITC Grand Central

## BANDRA WORLI SEA LINK

10 MINS DRIVE



## SCHOOLS & COLLEGES

15 MINS DRIVE

Poddar International, Bombay International, Aditya Birla World Academy, Hill Spring International, DSB International to name a few

A Project By



Tap on icon to follow



## BY STEPS



01

### METRO STATION

Underground metro station being built just 100m away.

02

### MONORAIL STATION

Sant Gadge Maharaj Chowk Station is at barely 3 mins walk.

03

### RAILWAY STATION

Both western and central lines station are at less than 5mins walk.

Site Address: Nahar Excalibur, Off K. K. Marg, Jacob Circle, Mahalaxmi, Mumbai - 11