



MATOSHREE
PRIDE

SIGNATURE APARTMENTS





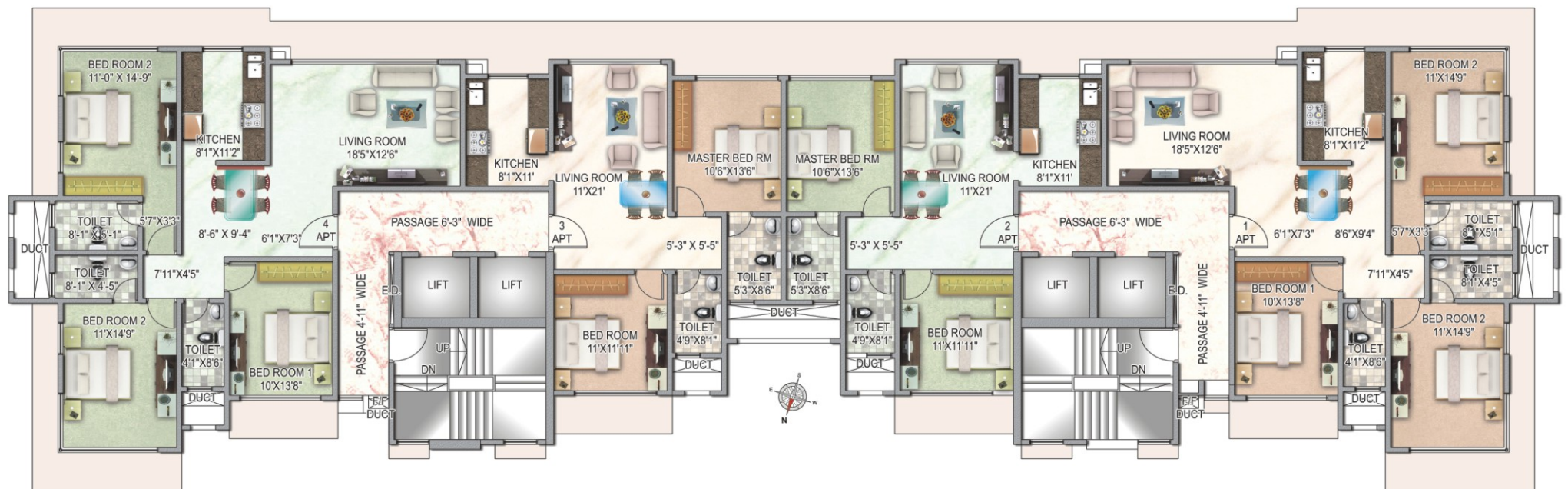
A MATTER OF PRIDE. A QUESTION OF PRIVILEGE.



The towering excellence of Matoshree Pride comes from its ambient, lush green surroundings and strategic location. Connecting the major hubs of the city, Matoshree Pride stands tall within the heart of Mumbai, giving you more convenience and better access. After all, when it's a matter of pride, where you are is as important as who you are. Each spacious flat is equipped with state-of-the-art amenities.

For fitness enthusiasts we have a fully equipped modern gym to keep you in great form and fitness.

These signature apartments come with a set of privileges to fulfill your lifestyle aspirations.



Apt. No. 4
 Carpet Area : 1080 Sq.Ft.
 Dry Balcony Area : 54 Sq.Ft.
Typical Floor Plan

Apt. No. 3
 Carpet Area : 711 Sq.Ft.
 Dry Balcony Area : 34 Sq.Ft.

Apt. No. 2
 Carpet Area : 711 Sq.Ft.
 Dry Balcony Area : 34 Sq.Ft.

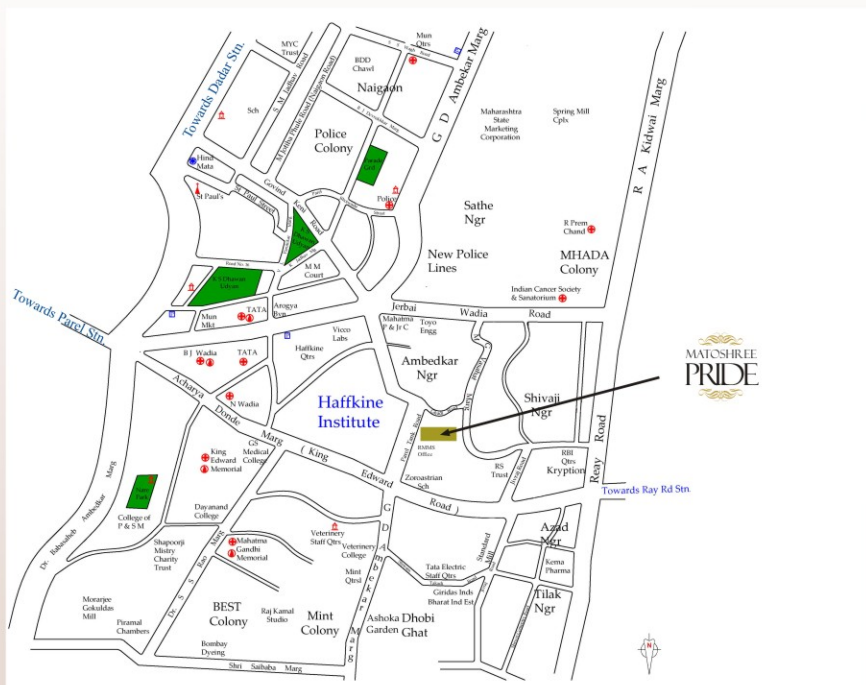
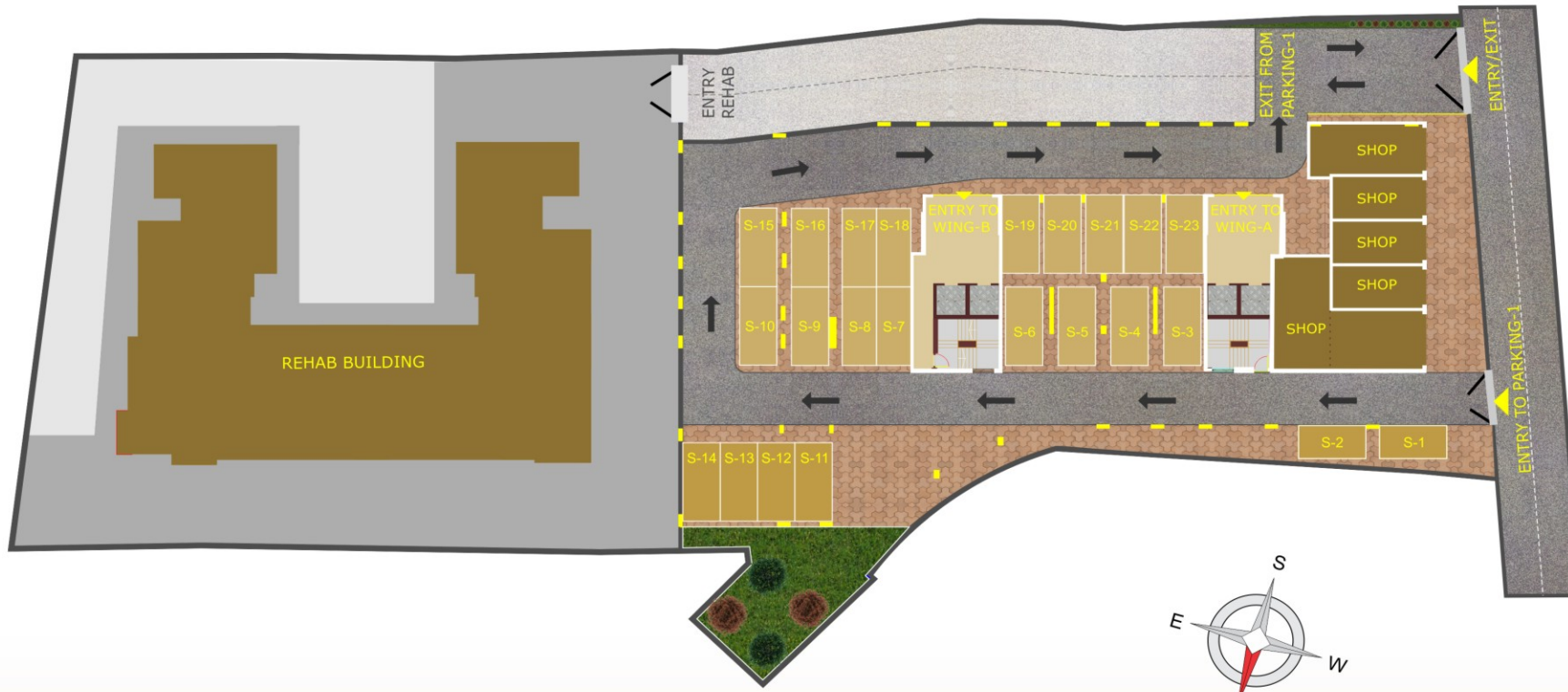
Apt. No. 1
 Carpet Area : 1080 Sq.Ft.
 Dry Balcony Area : 54 Sq.Ft.

A CASE OF LIFESTYLE ENGINEERING

The entire complex is planned to perfection and designed around aristocratic lifestyles. Each spacious flat reflects the care and commitment behind the project.



SIGNATURE APARTMENTS



Developer
Matoshree Properties

Architect
Sandip Shikre & Associates

R.C.C.
S.M. Mujumdar

Solicitors
Ghanekar & Associates

Site Address
CTS No. 660 of Parel -
Sewari Division,
G D Ambekar Marg,
Parel, Mumbai - 400 012.



MATOSHREE INFRASTRUCTURE PVT. LTD
Yashwant Natya Mandir, J. K. Sawant Marg,
Near Star City Cinema, Matunga (W), Mumbai - 400016.
Ph : +91 22 2439 7200 • Fax : +91 22 2439 7201
sales@matoshreeinfra.com

All visuals, Photographs and designs used in this brochure are an artist impressions. All the plans, drawings, amenities, specifications, facilities etc. are subject to approval of the developer & would be Changed if necessary. The discretion remains with the developer.