

www.mantri.in



mantri



Reserved for royalty



Emporio





History has seen the rise of many empires, each an ode to time! Glorious tales about each behemoth inspires, fascinates, and bewilders us, even today! From the artisans of the Persian Empire to the philosophers of the Roman Empire, the expanses of these kingdoms bore legends. Inspired by the grandeur in the sweep of history, another empire awaits you - one that you can call your own!

Wield the Sceptre

Reign supreme in your palace.
Let life pamper you everyday.
Let your abode reflect your
timeless personal style! Only 9
families will inhabit Mantri
Emporio, a place where
aristocracy is a way of life.
Only one flat per floor
upholds privacy and
exclusivity. The 4 BHKs range
from 441.3 Sq. Mts. (4750 Sq. Ft.)
to 452.4 Sq. Mts. (4870 Sq. Ft.)
and are true testaments to
king-size living. Choose a
home which makes your wish
its command!





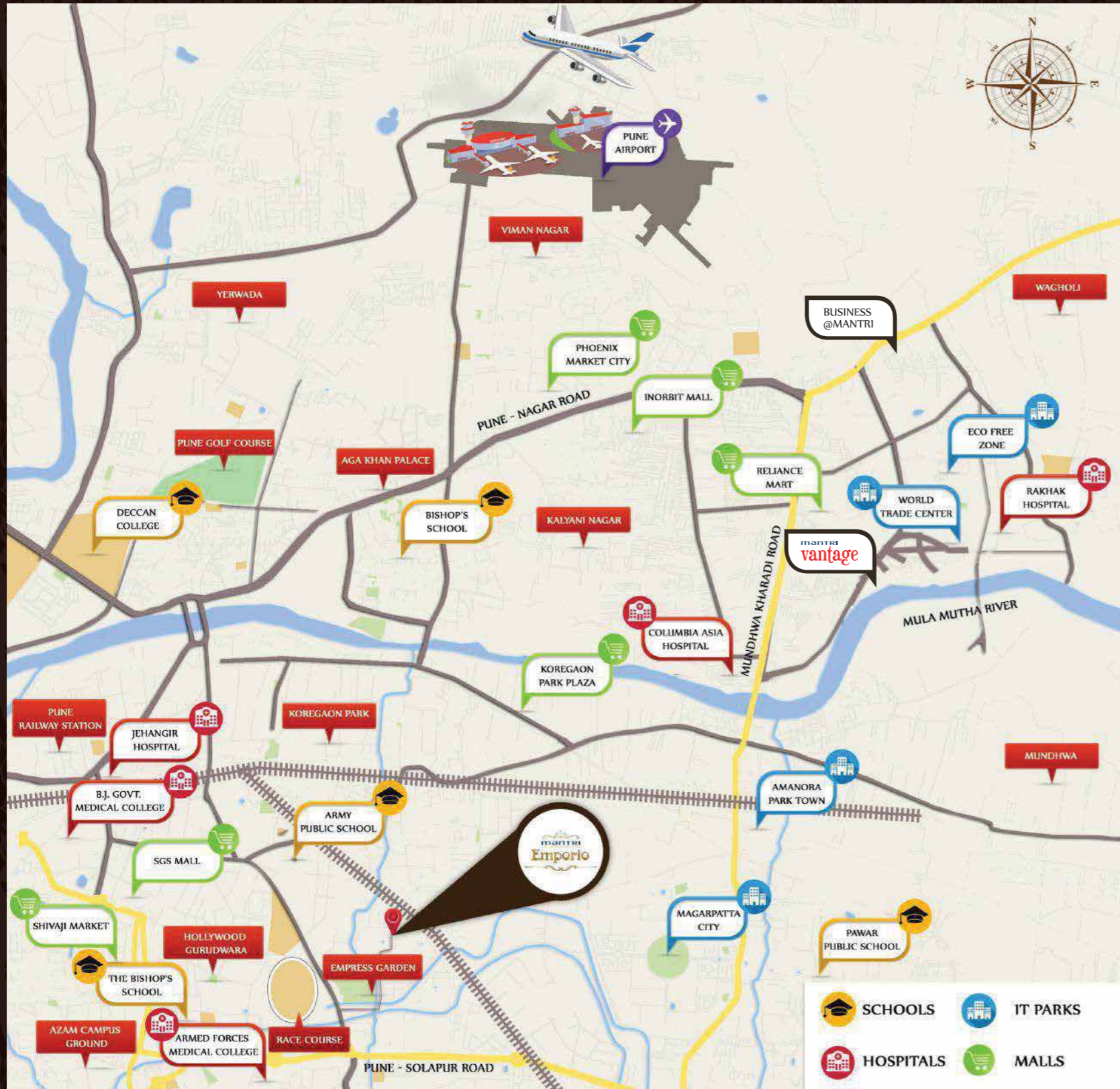


The Location

Sopanbaug needs no introduction. Located in this enviable location is an abode where Pune's Royalty will reside. Mantri Emporio is cocooned in natural beauty.

The serene cul-de-sac location ensures uninterrupted views of endless vistas of greenery.





LOCATION MAP

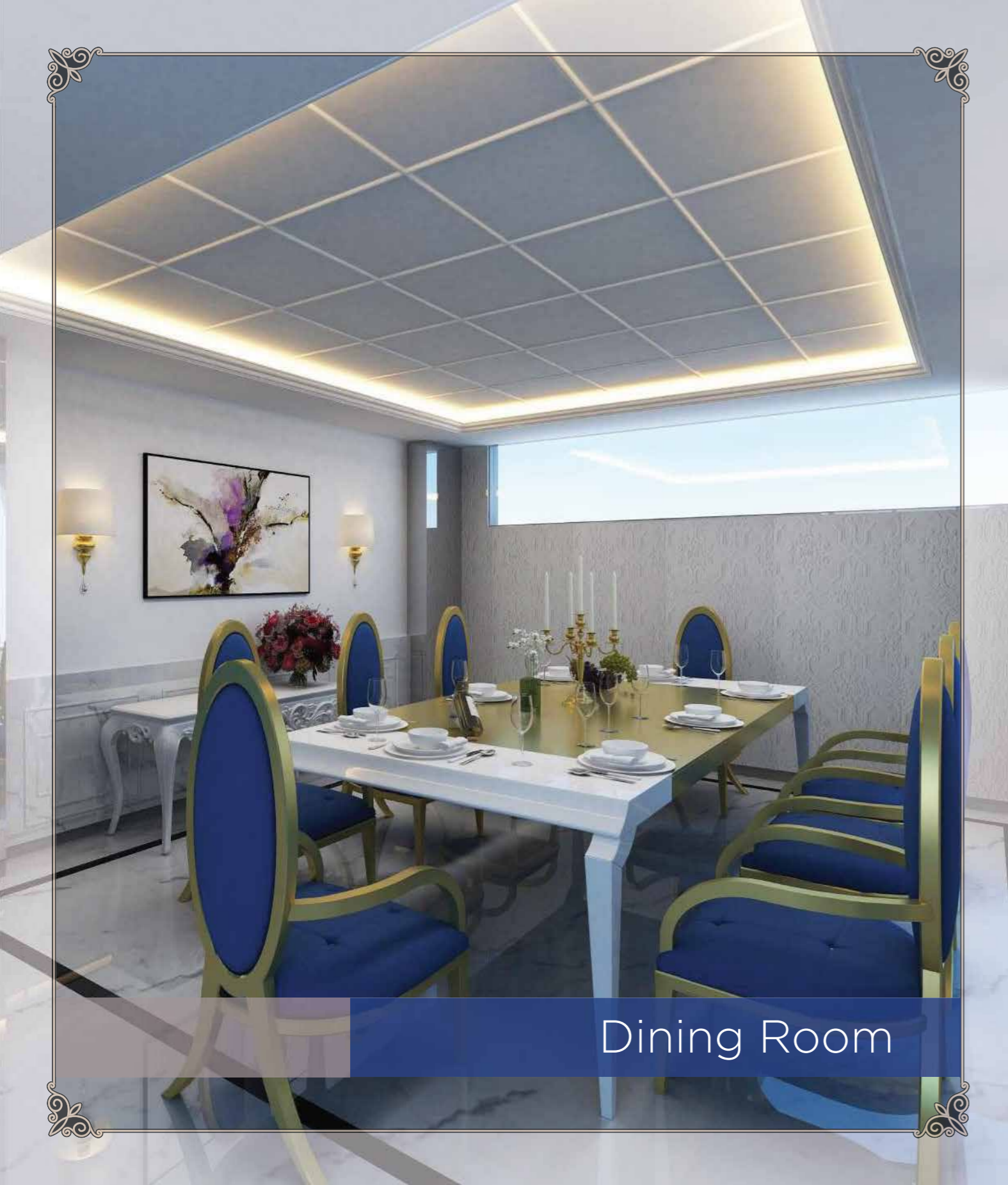
EMPRESS GARDEN	1 KM
PUNE RACE COURSE	2 KMS
BISHOP'S SCHOOL	3 KMS
MG ROAD	3.8 KMS
JAHANGIR HOSPITAL	4.3 KMS
MAGARPATTA IT PARK	5.5 KMS
PHOENIX/INORBIT	6.5 KMS
AIRPORT	10 KMS

Imposing Interiors

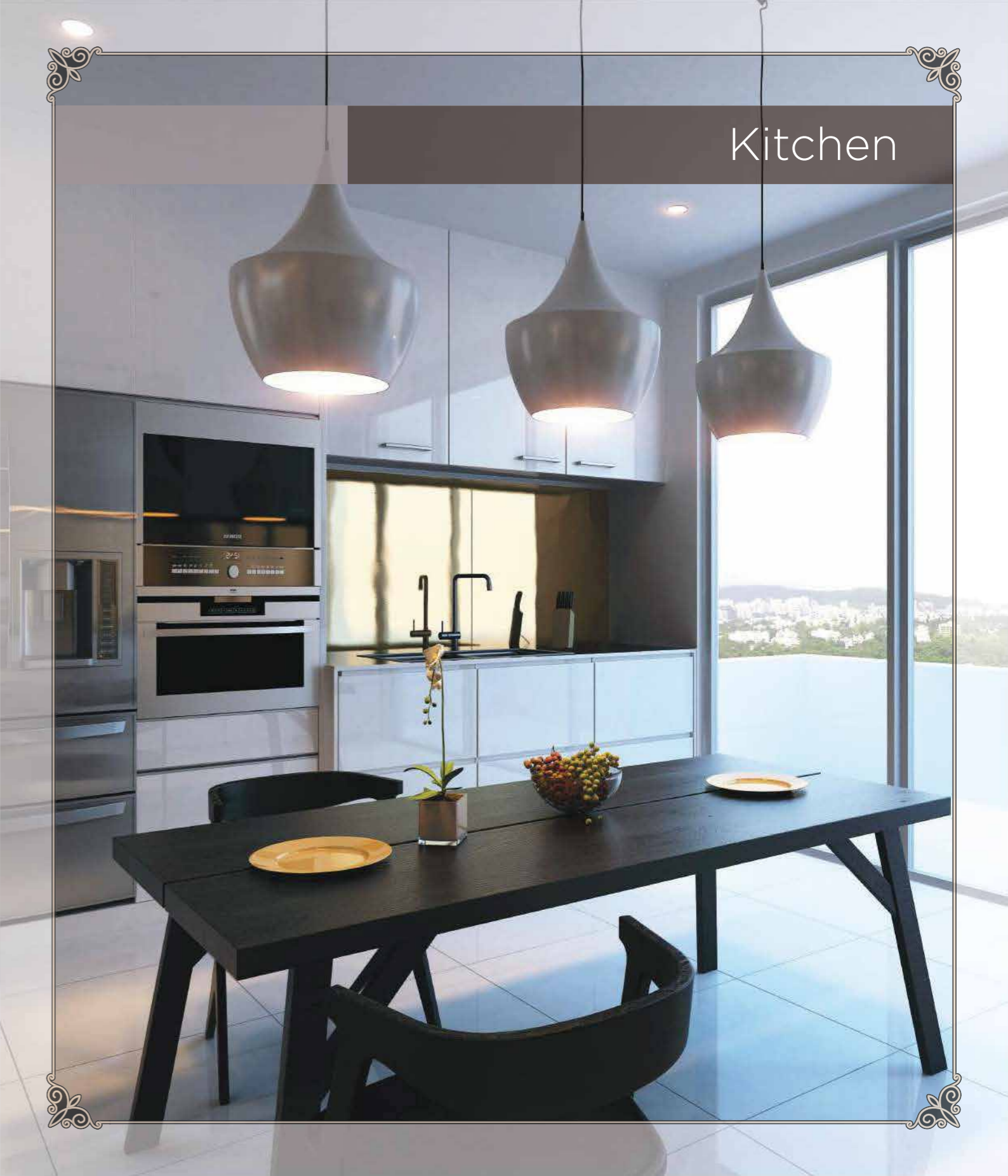
Enjoy a lifestyle
extraordinaire in your stately
abode. The designs
reverberate with luxury and
each detail is a saga in itself.
Here, nothing falls short of
your expectations, and your
reign is the talk of the
kingdom!



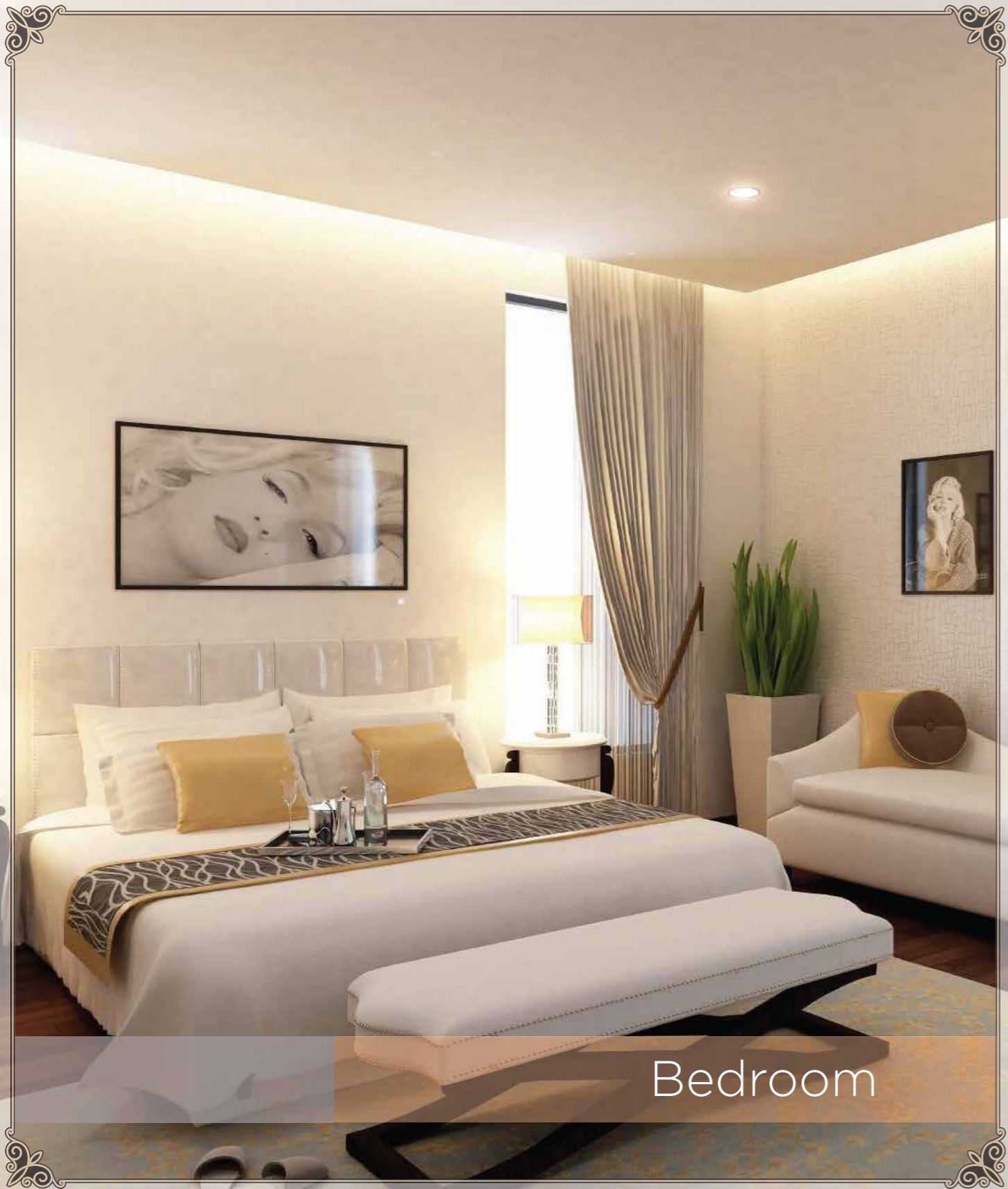
Living Area



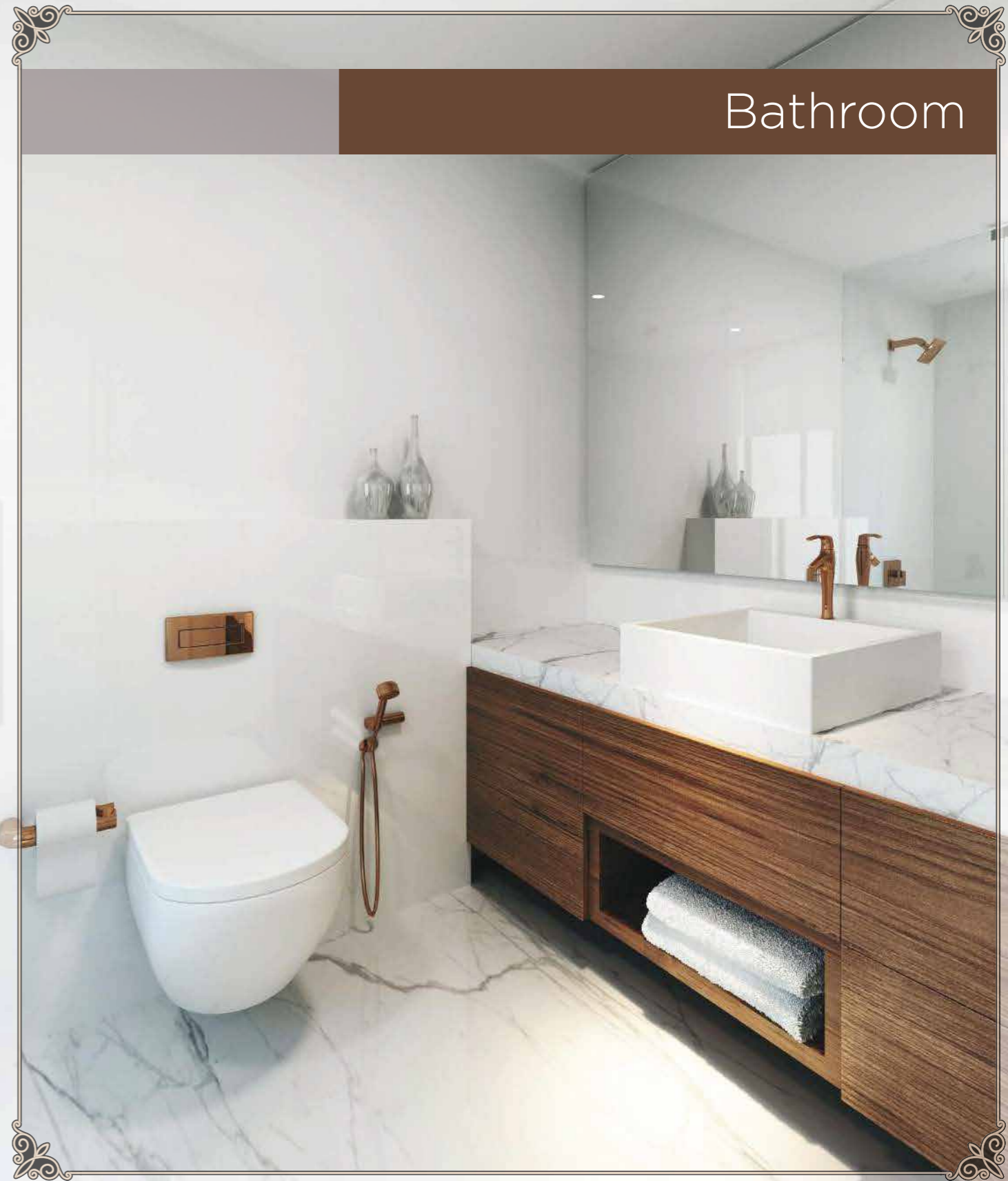
Dining Room



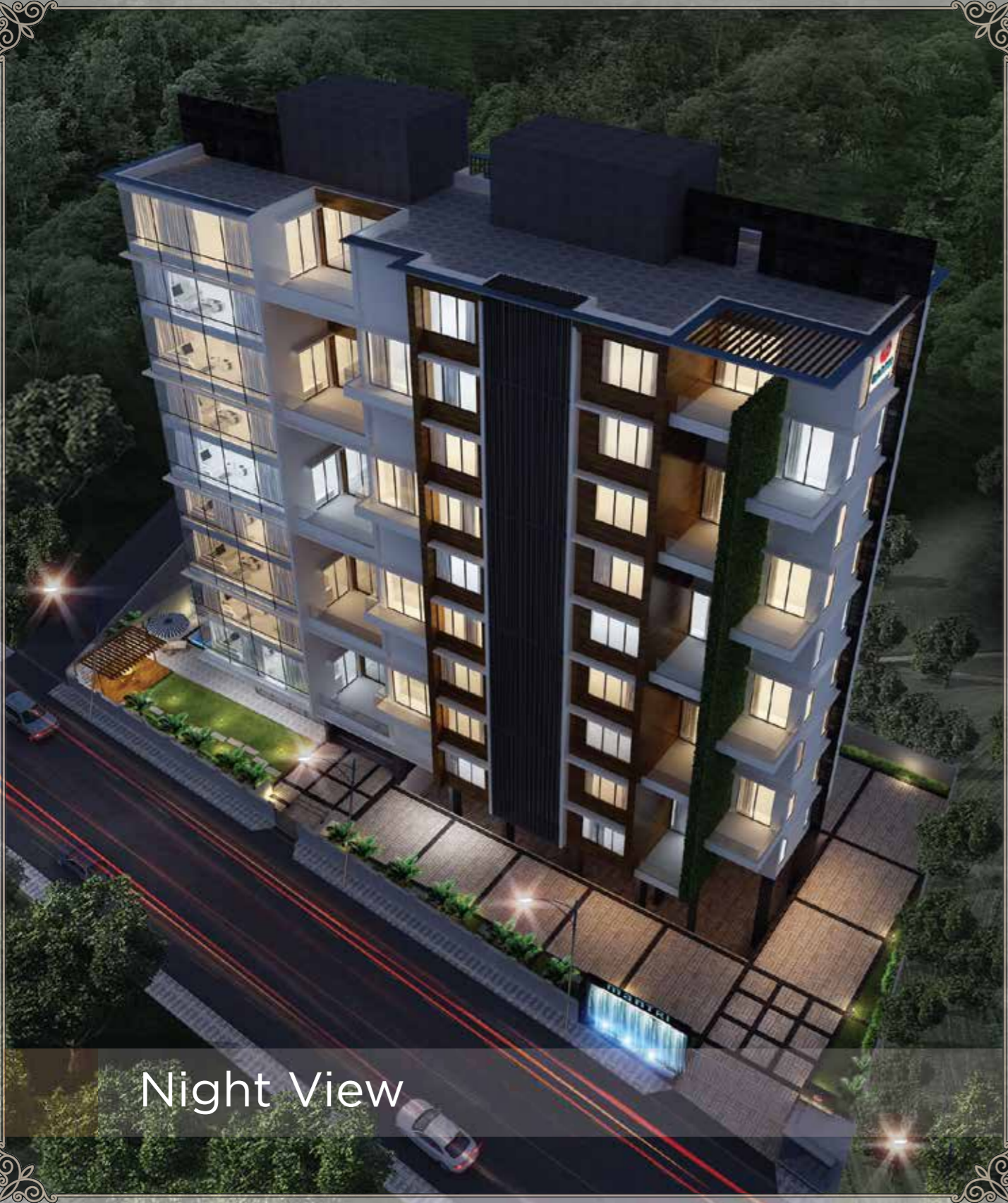
Kitchen



Bedroom



Bathroom

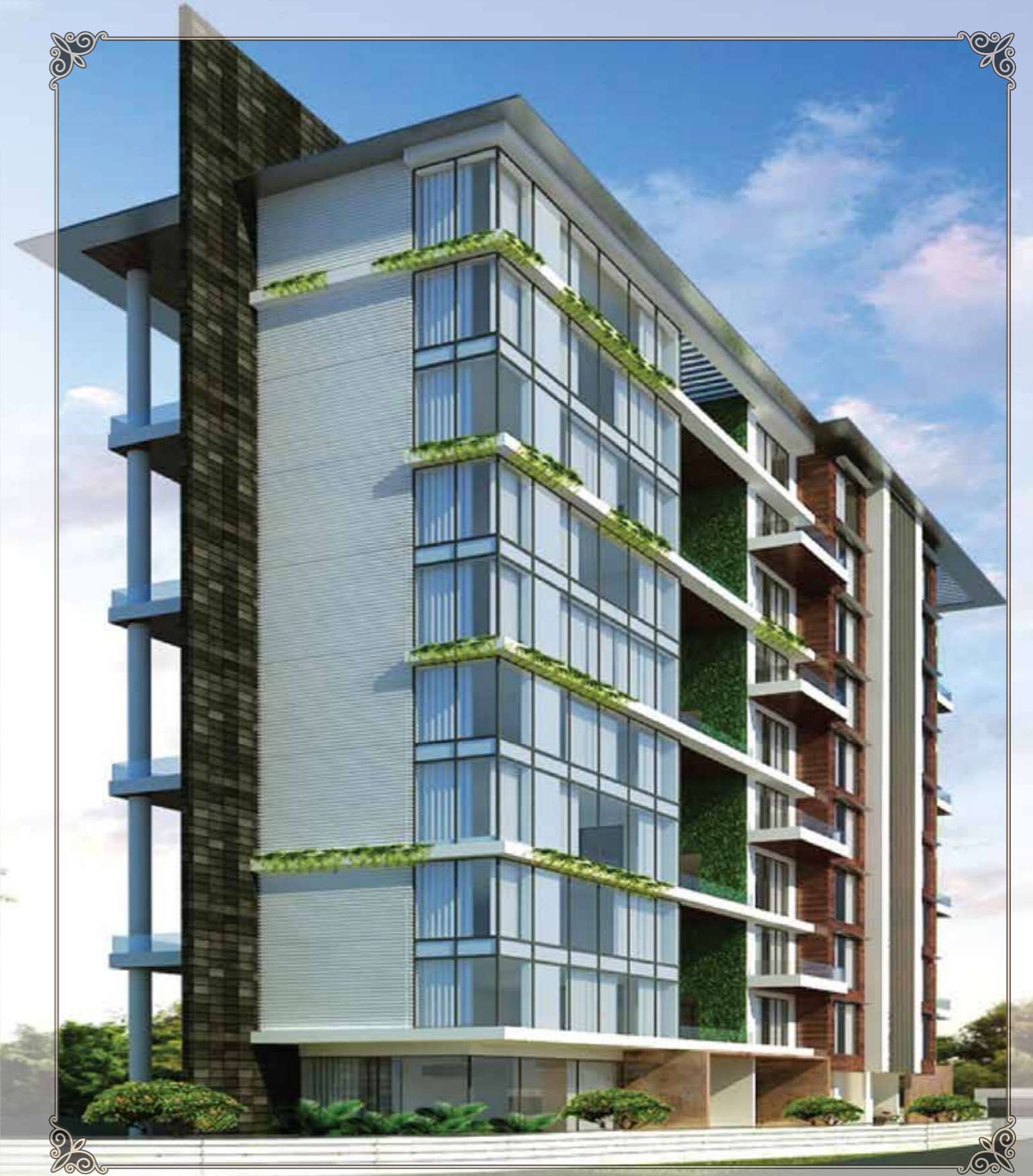


Night View





Day View

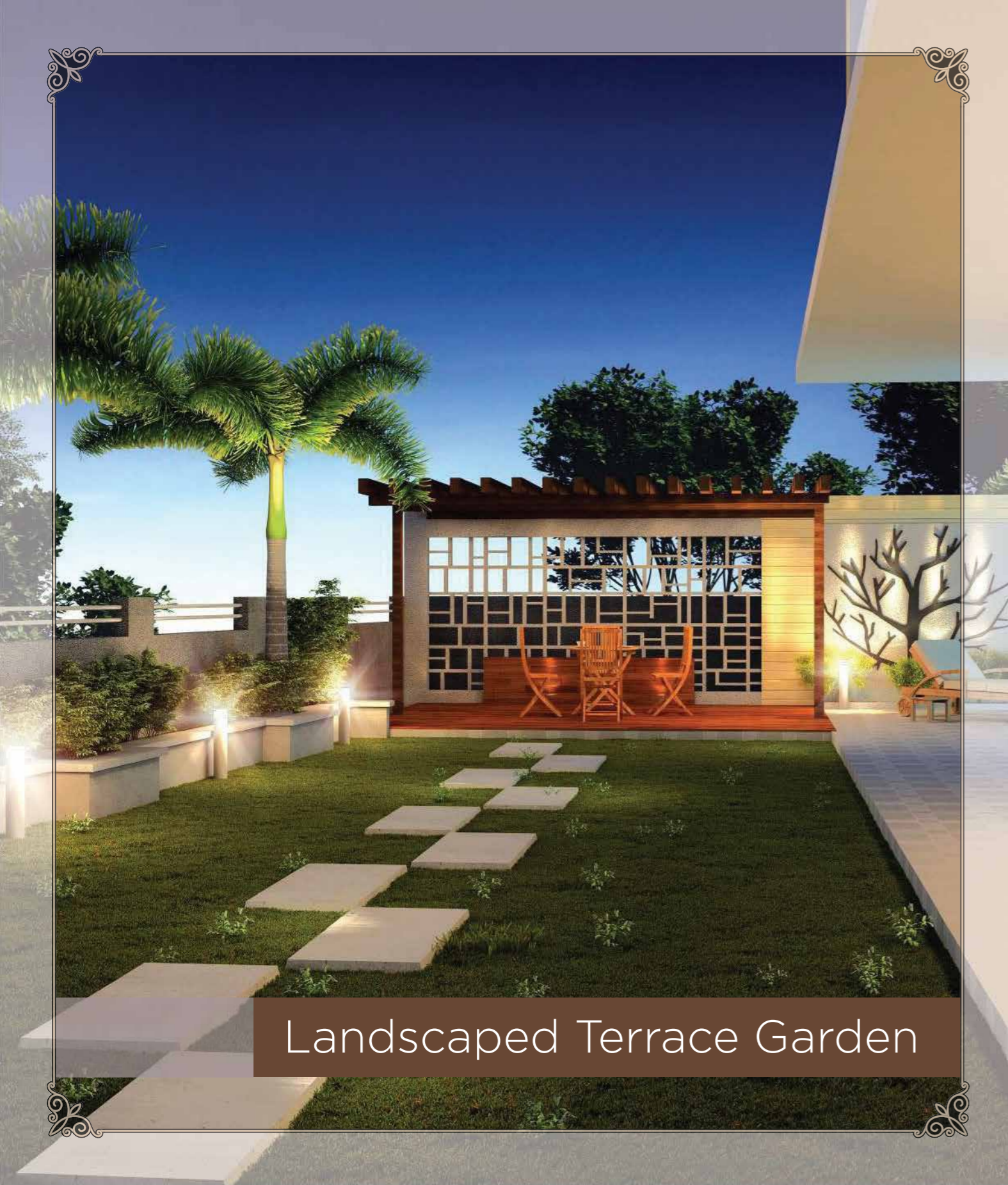


The Jewel Crowns

The whims and fancies of kings and queens have been fulfilled! Each amenity adds glory to your exuberant lifestyle. Lounge by the swimming pool, enjoy barbeque in the outdoor party area, or host an afternoon tea in the picturesque terrace garden.

Welcome to aristocratic living at Mantri Emporio!

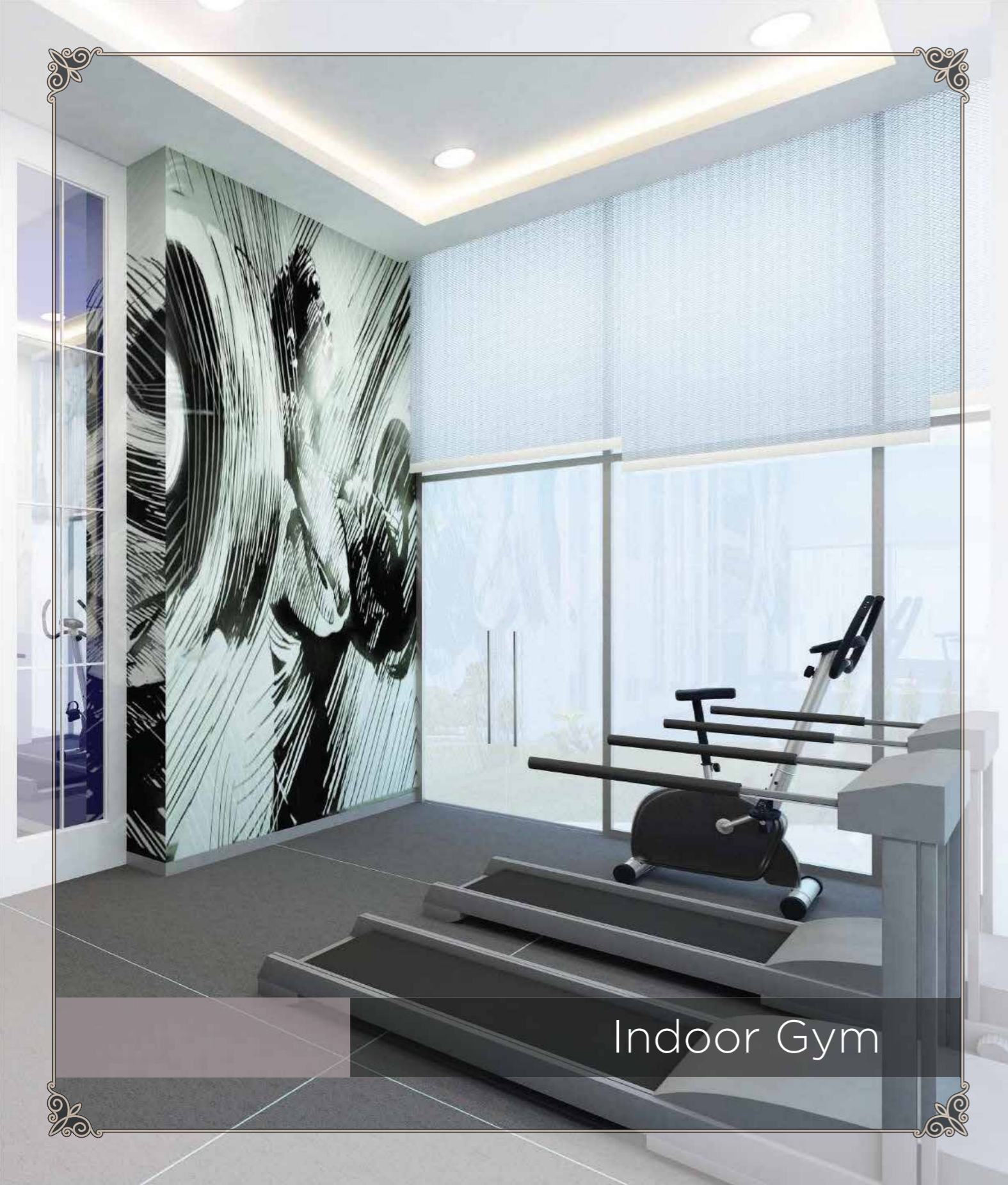




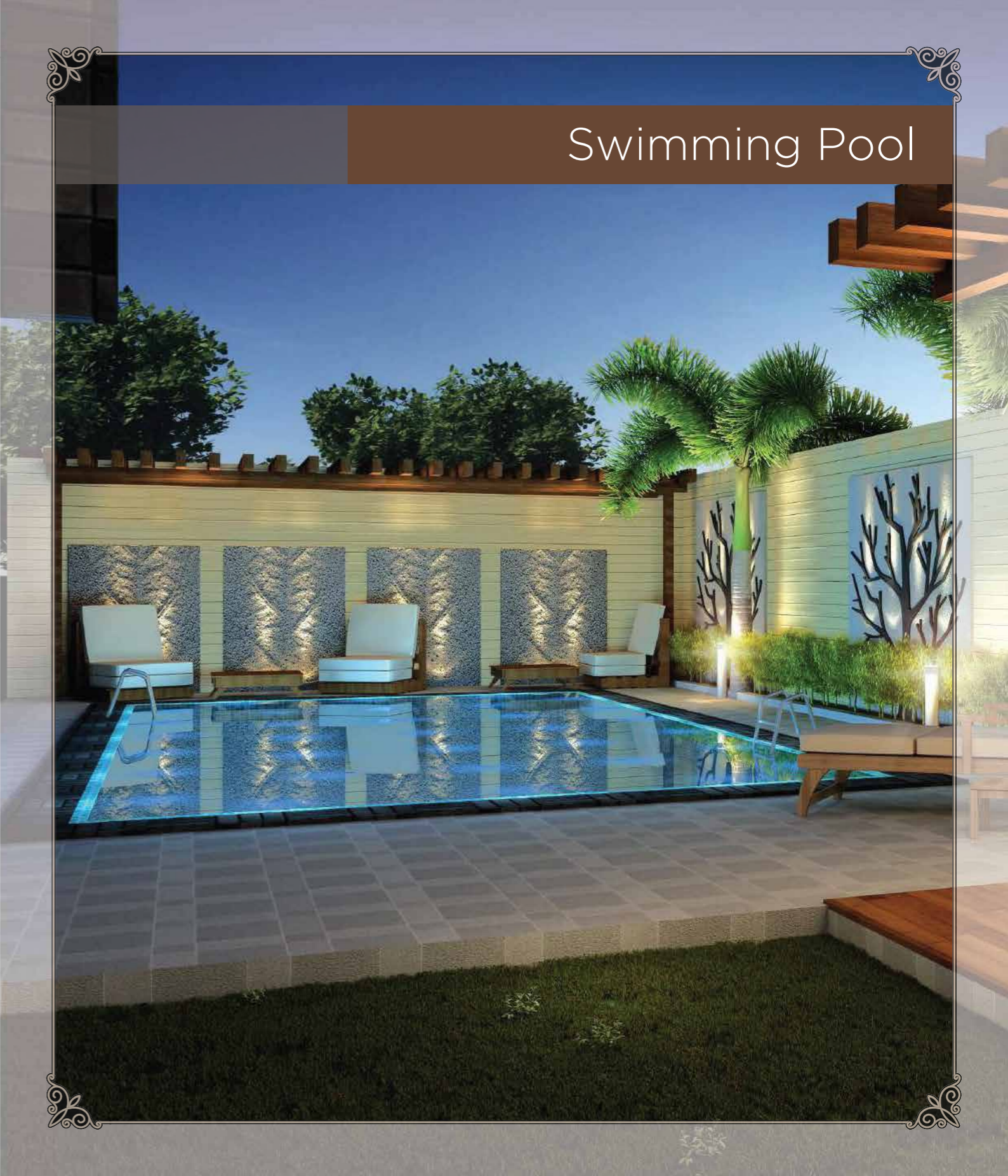
Landscaped Terrace Garden



Multipurpose/Party Hall



Indoor Gym



Swimming Pool



SITE PLAN LEGENDS

1. Entrance plaza with water feature wall
2. Pedestrian entry
3. Feature wall
4. Party lawn
5. BBQ deck area
6. Swimming pool
7. Pergola with water body towards pool
8. Play area
9. Driveway





FLOOR PLAN

Floor Plan - 5360 Sq. Ft.



Floor Plan - 5500 Sq. Ft.



The Mantri Legacy

Mantri Developers, the brainchild of Mr. Sushil Mantri, was established in 1999 with a vision to create a real-estate organization steeped in professionalism, innovation and environmental sustainability.

From its inception and its very first project, brand Mantri has upheld the personal value system of Mr. Sushil Mantri; PQRST - Punctuality, Quality, Reliability, Speed and Transparency. The strict adherence to these values across the organization meant that Mantri Developers ensured timely delivery of projects, services and ethical practices. This has garnered brand Mantri the distinction of becoming one of the most respected real estate brands in South India over the last 16 years.

In 2010, Mr. Sushil Mantri took the next step towards strengthening brand Mantri by including his signature in the corporate and brand identity, thereby offering his personal assurance and guarantee to customers, clients, associates and other stakeholders of the organization.

Brand Mantri has many firsts to its credit, including Mantri Square - India's largest mall in 2010; Mantri Altius - Bangalore's very first exclusive, ultra-luxury, high-rise residential tower, which was awarded the 'Best Residential Project in India' by CNBC CRISIL; pioneering concepts in real estate, such as highest carpet area, Home Concierge, Tele-medicine, smart homes and many more.

The Mantri legacy is incomplete without the mention of its efforts and initiatives in social responsibility. Mantri S.E.V.A. - Supporting and Encouraging Voluntary Action, is a personal pledge by Mr. Sushil Mantri, as well as a business pledge, to support and nurture socially responsible action, while addressing social issues and serving the community at large.

EDUCATION



OFFICE



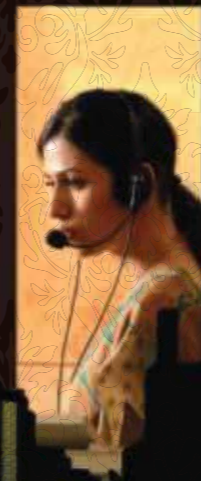
RESIDENTIAL



RETAIL



HOSPITALITY



TOWNSHIP



WORLD CLASS MANAGEMENT SYSTEM

At Mantri Developers, we are committed to providing eco-friendly residential and commercial dwellings in a safe and healthy environment. We abide by our commitment to prevent pollution, meet legal and other requirements, and continually improve the effectiveness of our management systems. We constantly work towards minimizing occupational risks and hazards at our work stations. We respect the principles of social accountability and meet its requirements.



Mantri Developers was honored by CMO Asia with the award for Brand Excellence.



Mantri Developers was adjudged as one of India's Top 10 builders at the "Construction World Architect & Builders awards."



Mantri Developers was awarded the CNBC Awaaz CRISIL, Real Estate Award for India's best Residential Building.



Mr. Sushil Mantri was bestowed with the "Young Visionary Award in Real Estate Infrastructure" by CSI.



Mr. Sushil Mantri was awarded "Entrepreneur of the Year" by Big Brands Research.



Mantri Developers was conferred with the prestigious CII Sustainability award for "STRONG COMMITMENT TO EXCEL" on the journey towards sustainable development.



mantri

Head Office: Mantri House,
#41, Vittal Mallya Road, Bengaluru - 560 001.

www.mantri.in

Mantri Developers

Bengaluru | Chennai | Hyderabad | Pune | Delhi

1800-121-0000

This handout is conceptual in nature and not by any means a legal offering.
The promoters reserve the right to change, delete or add any specifications or plans mentioned herein.