



BUILDERS & DEVELOPERS

Corp. Off.: 306-310, 'Madhava' C-4, Near Family Court, Bandra Kurla Complex, Bandra (East), Mumbai- 400 051. Tel.: 022 6748 8888/ 6700 3888

Site Add.: Joy Adinath II, LBS Marg, Besides Dena Bank, Bhandup (West), Mumbai- 400 078.

Sales Office: Joy Aashiana, 24, Azad Nagar CHS Ltd, N.S. Road No.1, J.V.P.D. Scheme, Vile Parle (West), Mumbai- 400 056.

Email: sales@joydevelopers.com

Website: www.joydevelopers.com

DESIGN ARCHITECT
AR. DEEPAK MEHTA

STRUCTURE CONSULTANT
H.M. RAJE

B.M.C. ARCHITECT
MANOJ DAISARIA
(Daisaria & Associates)

thoughttrains.com

Disclaimer: The plans, specifications, images and other details herein are only indicative and the developers/owner reserve their rights to change any or all of these in the interest of the development. This printed material does not constitute an offer and /or contract of any type between the developers/owner and the recipient. Any purchase/ lessee of this development shall be governed by the Terms and Conditions of the agreement for sale/lease entered into between parties and no details mentioned in this printed material shall in anyway govern such transaction. tolerance of +/- 5 % is possible in the unit areas on account of design and construction variances.



abodes
BEYOND YOUR DREAMS



JOYADINATH-II
LBS MARG, BHANDUP (W)

JOYADINATH-II
LBS MARG, BHANDUP (W)



FEATURES THAT ADD UP MAGNIFICENCE IN LIFESTYLE

Salient Features:

- Basements + Ground + 3 Podium + 13 Storeyed Tower
- Spacious 2,3,4,5 & 6 BHK apartments
- RCC structure as per ISI code
- Rain water harvesting
- 2 branded high-speed elevators
- Generator backup for lifts & common areas
- Video door phone with intercom system
- Ample parking in basement & on 3 podiums
- 2 car lifts
- Provision of society office & security cabin

Lifestyle Features:

- Well-equipped gymnasium
- Kid's play area
- Landscaped garden on ground floor
- Zen garden on terrace



Behold the magnificence of Joy Adinath-II and discover a comfortable and peaceful side of life. Experience the grandeur as this 13 storeyed tower featuring spacious apartments and combination flats bringing up lifestyle that is a perfect blend of luxury and well-being. Located amidst the serene environment of Bhandup, Joy Adinath-II is truly the place where you can let your dreams get unleashed and enjoy the greener side of your life.

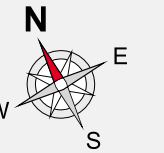


TYPICAL FLOOR PLAN

GARDEN



L.B.S. ROAD

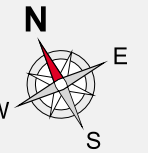


COMBINED FLOOR PLAN

GARDEN



L.B.S ROAD

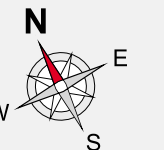
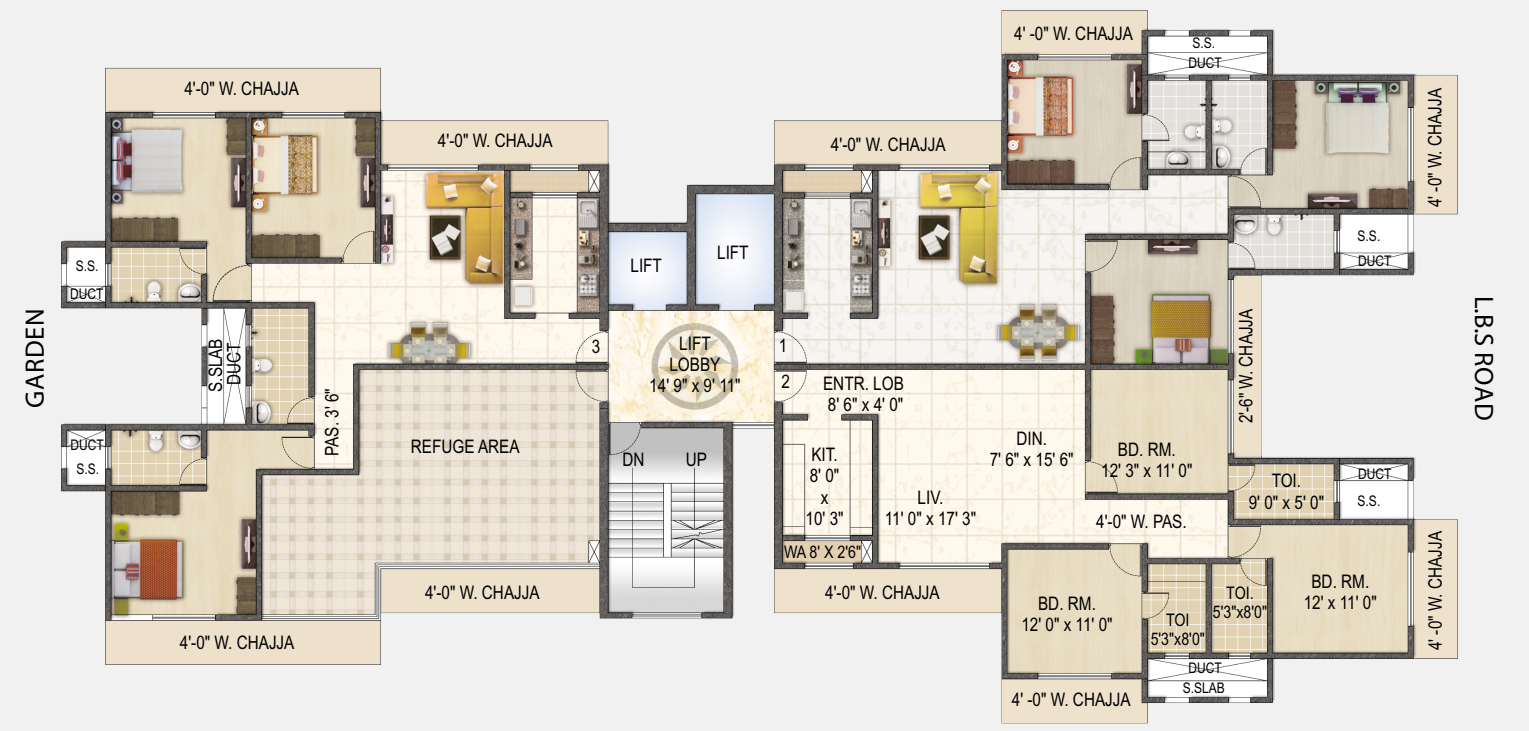


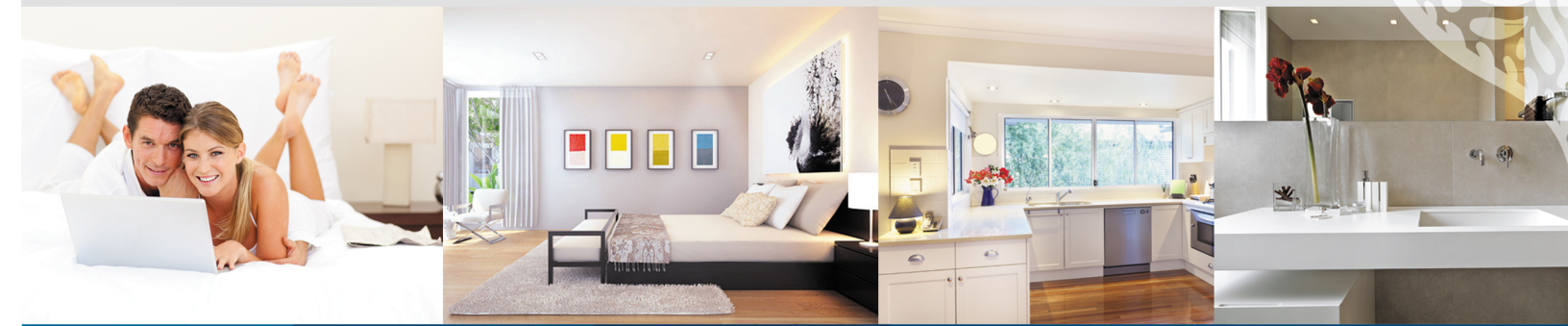
REFUGE FLOOR PLAN

3RD FLOOR PLAN

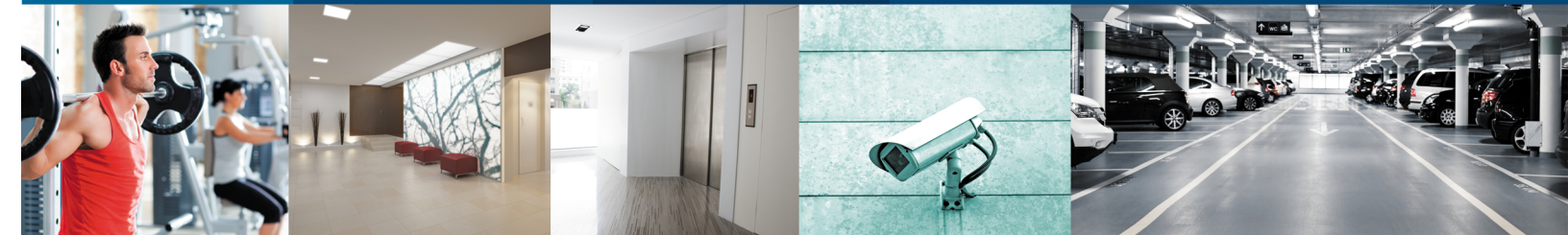


10TH FLOOR PLAN





WHERE ELEGANCE REDEFINES YOUR LIVING



Internal Amenities:

Flooring:

- 32" X 32" vitrified tiles
- Ceramic tiles in bathrooms

Ceiling:

- Gypsum false ceiling in living/dining area
- Concealed lights in bedroom

Kitchen:

- Main & service granite kitchen platforms
- Adequate points for geyser, exhaust fan, water filter and washing machine

Doors & Windows:

- Teak wood frame for all doors
- Anodized aluminum French windows with mosquito net
- Glass /M.S. railing as per elevation design

Electrical:

- Concealed ISI copper wiring
- Adequate points for A/C, telephone, internet and cable tv

Plumbing & Sanitary Ware:

- 'Jaquar' make C P fittings of 'Artize' series
- Designer bathrooms with best quality sanitary fittings and fixtures
- Provision for exhaust fan point and opening in all bathrooms

Painting & Wall finish:

- Internal walls with POP finish and plastic emulsion paint
- External walls textured with acrylic paint
- Color glazed dado tiles up to beam bottom in bathroom

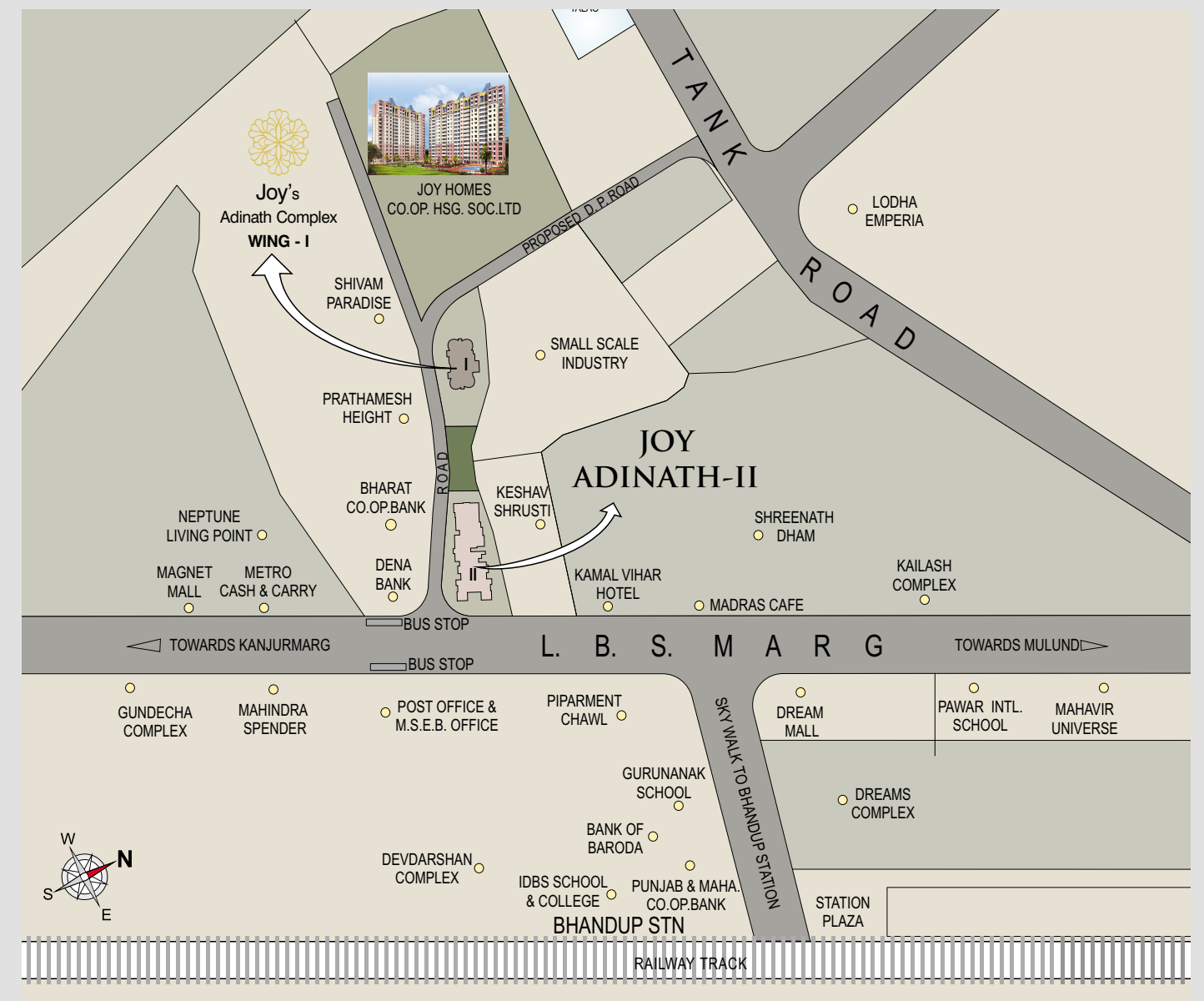
Security:

- CCTV for common area
- Advanced fire fighting system

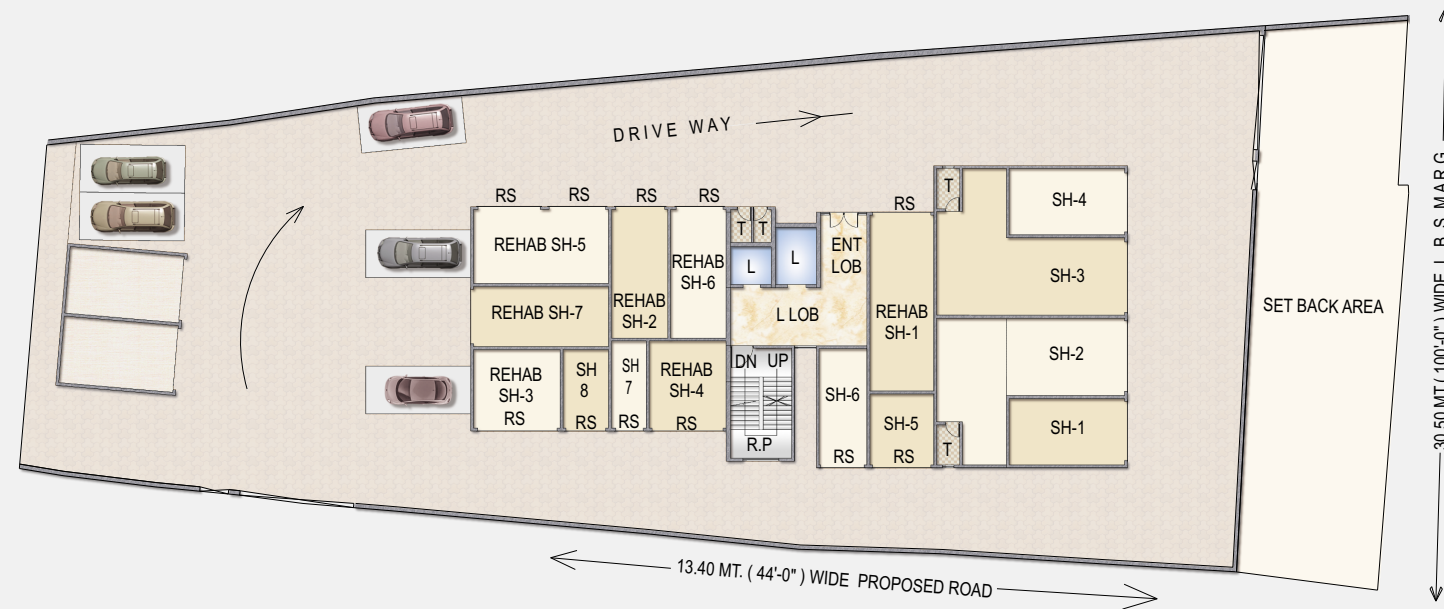
Location Advantages

- Located amidst serene environment
- Centrally located on L.B.S. Marg, Bhandup (W)
- 3-5 minute walk from Bhandup Station
- All the necessities like hospitals, shopping malls, colleges, hotels etc. in close vicinity
- Close to Jain Derasar and other religious temples

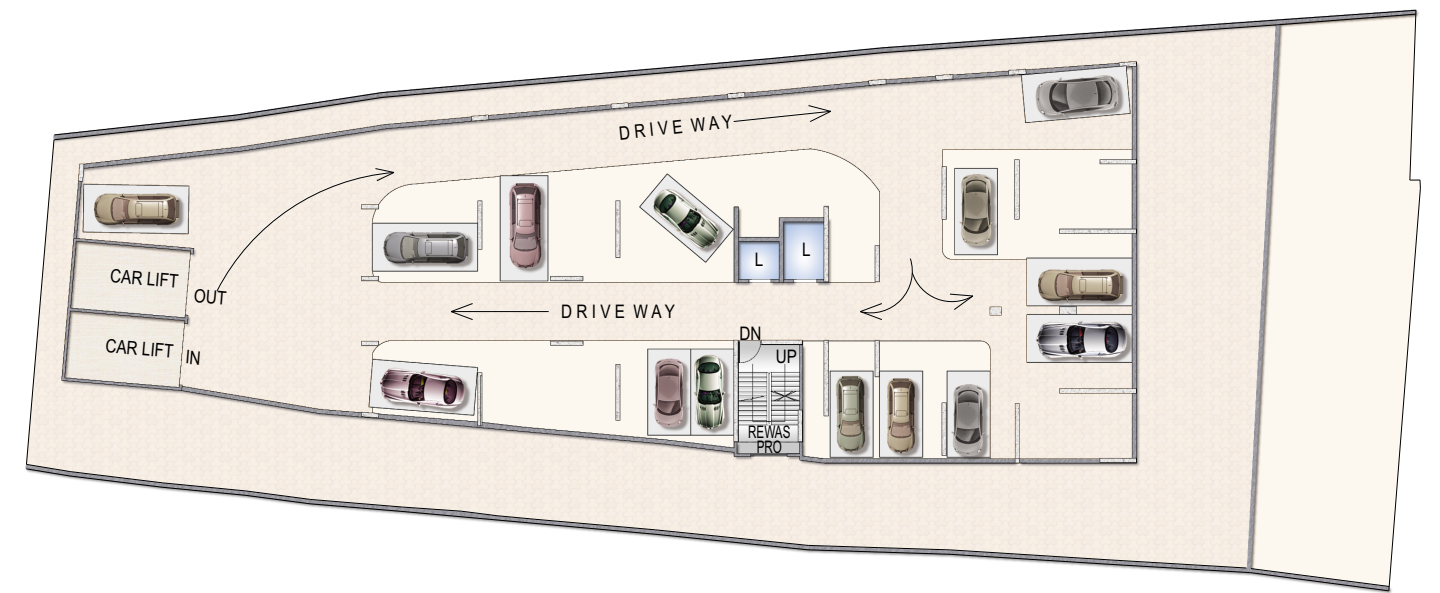
Location Plan



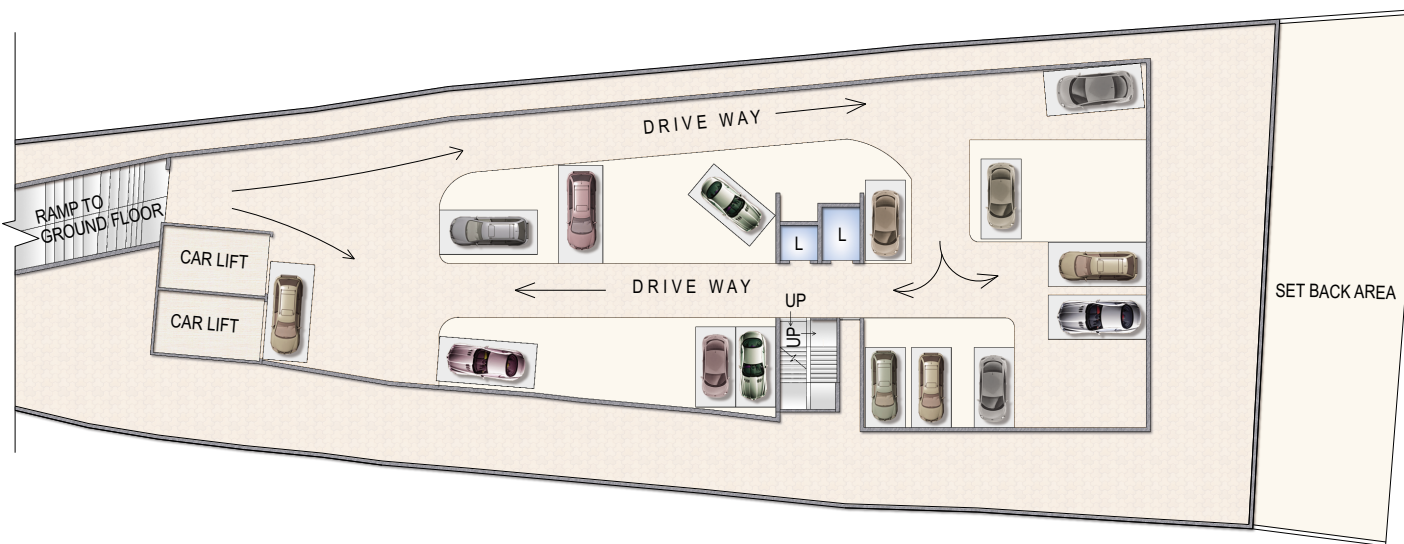
GROUND FLOOR PLAN



1ST & 2ND FLOOR (PODIUM PARKING PLAN)



BASEMENT PLAN



3RD FLOOR (PODIUM PARKING PLAN)

