



EKTA VERVE
— *Luxury Landmark* —



IMAGE USED FOR REPRESENTATIONAL PURPOSE

EKTA world®
X L u x u r y

Since 1987, EKTA has been devoted to transforming local landscapes into extraordinary living spaces, and has been serving the most astute and discerning clients. And now after three decades, many impressively designed projects stand a testament to its success.

A real estate triumph in over 60 desirable locations with 94+ projects - including 25+ projects in the Khar-Bandra-Santacruz locale, 20.08 million sq. ft. of unique construction and 14,500 happy families, EKTA continuously embarks on innovative construction techniques for a new-age of luxury. EKTA's real estate goes beyond luxury itself by infusing simplicity with opulence, comfort with aesthetic design and offers eco-centred elegance for environmentally conscious living.

EKTA presents a series of luxe abodes, where being classy is a lifestyle, indulgence a routine and extravagance a norm. With a collection of the finest and ultra-plush residential marvels complemented with landmark addresses, spectacular architecture and palatial aura, prepare to satiate your desire to be exceptional.

EKTA Invictus



The One



EKTA Empress



FINE LIVING A NOTCH ABOVE

For those seeking a life beyond the ordinary, beyond the status-quo, EKTA's collection of luxury landmarks is a promise of a shimmering lifestyle. The only criteria? An eye for comfortable, elegant, practical and beautiful design.

Fit for the city's gentry, these rare celestial spaces emphasise on exclusivity and the personality of the privileged owner, truly defining an aristocratic life.

EKTA INVICTUS

The tallest icon of privacy and exclusivity in Dadar East, coupled with 360° vistas of the Mumbai cityscape.

THE ONE

Situated in one of the most affluent neighbourhoods, this lavish stunner in Pali Hill is a harmonious blend of modernity and elegance.

EKTA EMPRESS

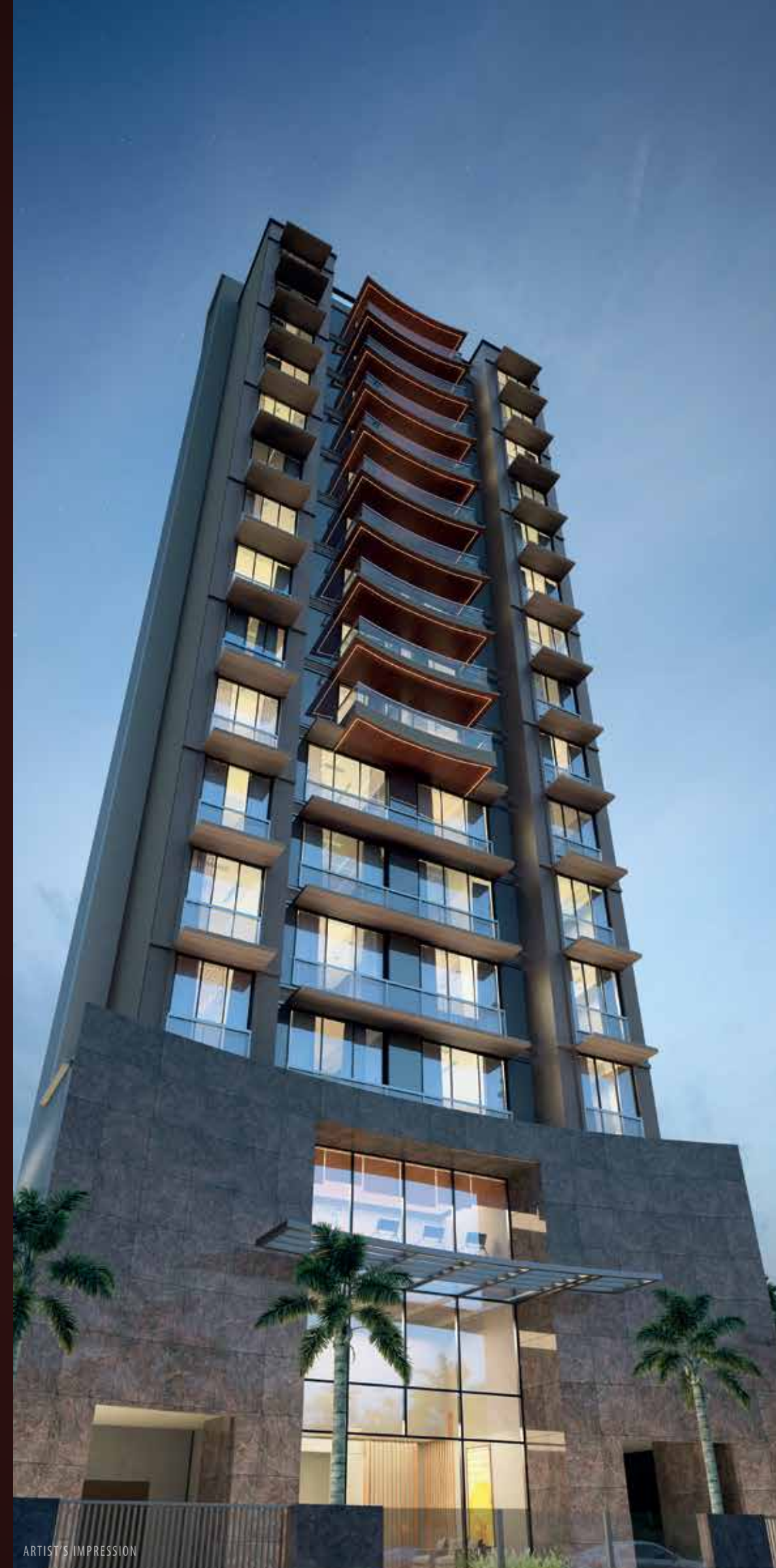
Located at the junction of 17th road in Khar West, with lavish and thoughtfully designed 4 BHK residences.

PRESENTING

EKTA VERVE

— *Luxury Landmark* —

3, 4 & 5 BHK RESIDENCES



Bespoke experiences find their place at EKTA Verve, an upcoming address of pride in Khar West. A latest entrant into EKTA World's series of luxe abodes, this gem is designed for those who have a penchant for everything niche.

Synonymous with exclusivity, elegance and sophistication, EKTA Verve is a class by itself. It is a testimony of your stature that bestows prestige and comforts like no other. Here, residents live the life of royalty amongst plush décor, contemporary design, high-tech living space, breathtaking sea view and luxurious amenities. It is a city paradise, from the moment one steps in through the door.



**A PLUSH NEIGHBOURHOOD IS GOOD.
THE GLITZY VICINITY OF 16TH ROAD,
KHAR IS BETTER.**

A much-coveted address by the who's who of the city, Khar West is one destination that charms at first sight. With the finest residential, commercial and entertainment establishments, serene boulevards, quaint architecture, a plush vibe and proximity to Bandra West, this neighbourhood is inimitably one-of-a-kind. It is hardly surprising that some of the city's biggest names choose to make Khar their home.

Location map not to scale.



**A MODERNISTIC FRONT FACADE IS GOOD.
A CONTEMPORARY & CLASSY FIRST IMPRESSION
IS BETTER.**

Luxury living is not complete without awe-inspiring craftsmanship as its foundation. The 16-storied deluxe tower features a contemporary elevation design, coupled with zinc and glass cladding for an ultra-premium appearance.

The 5 BHK expansive residences are crafted with high levels of care and attention that includes beautiful French-style windows, which offer a chic touch to the novel facade architecture.

This architectural masterpiece has been brought to life by Chandrashekhar Kanetkar, Principal Architect and Chief Designer at Chandrashekhar Design Inc. He has fused bold and creative design concepts with luxury, to create swish and swanky spaces that you will surely cherish.



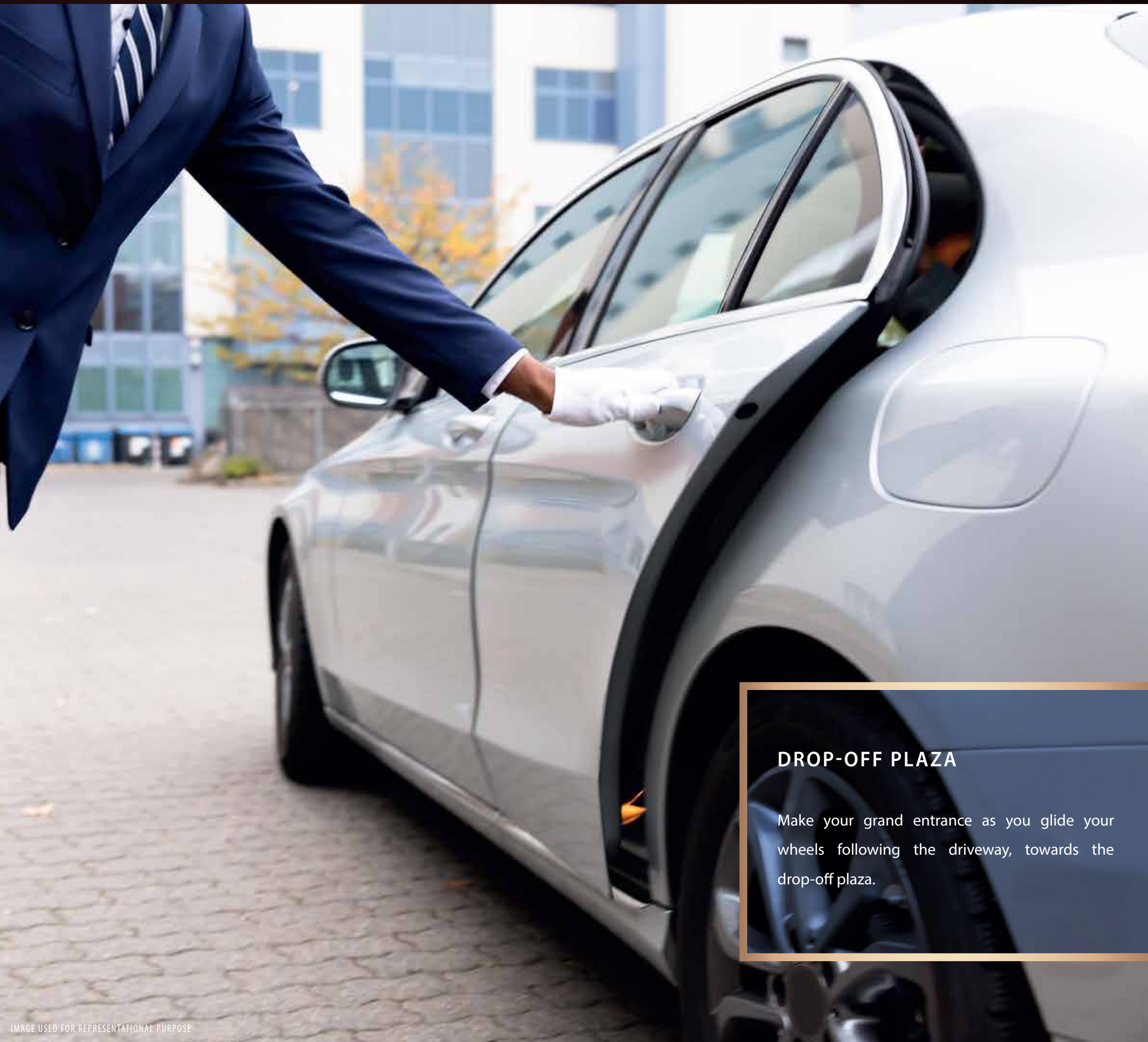
IMAGE USED FOR REPRESENTATIONAL PURPOSE



IMAGE USED FOR REPRESENTATIONAL PURPOSE

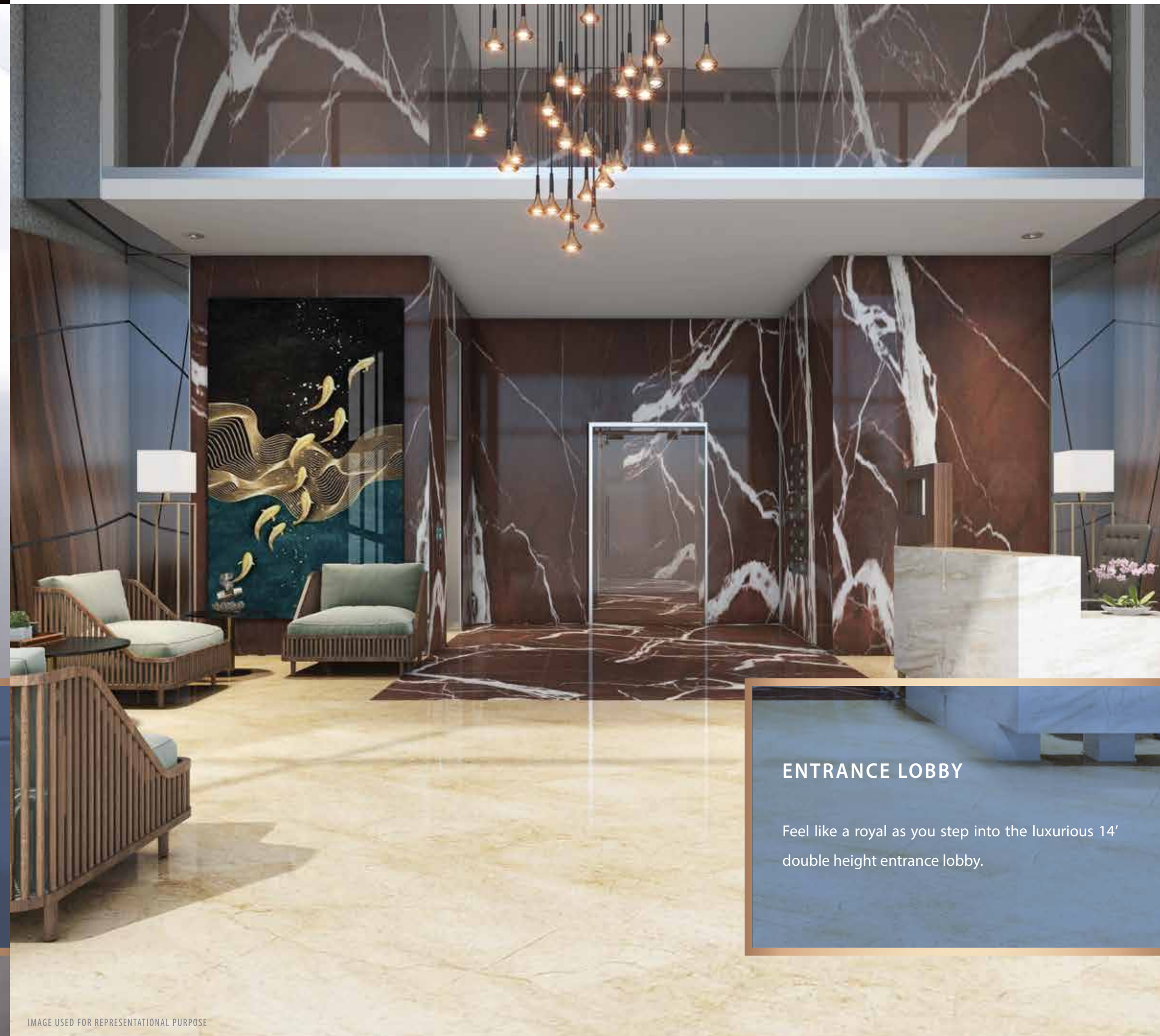
**WORLD-CLASS AMENITIES ARE GOOD.
UNRIVALED EXPERIENCES THAT ENTHRAL ARE BETTER.**

It is only at EKTA Verve that residents can expect to find such an exclusive set of amenities and experiences at their disposal. With an extensive range of enviable facilities, nowhere else can everyday living be so very indulgent. Inside this 16-storey tower lies a complete package for living the high-life, hand-picked only for the arbiters of taste.



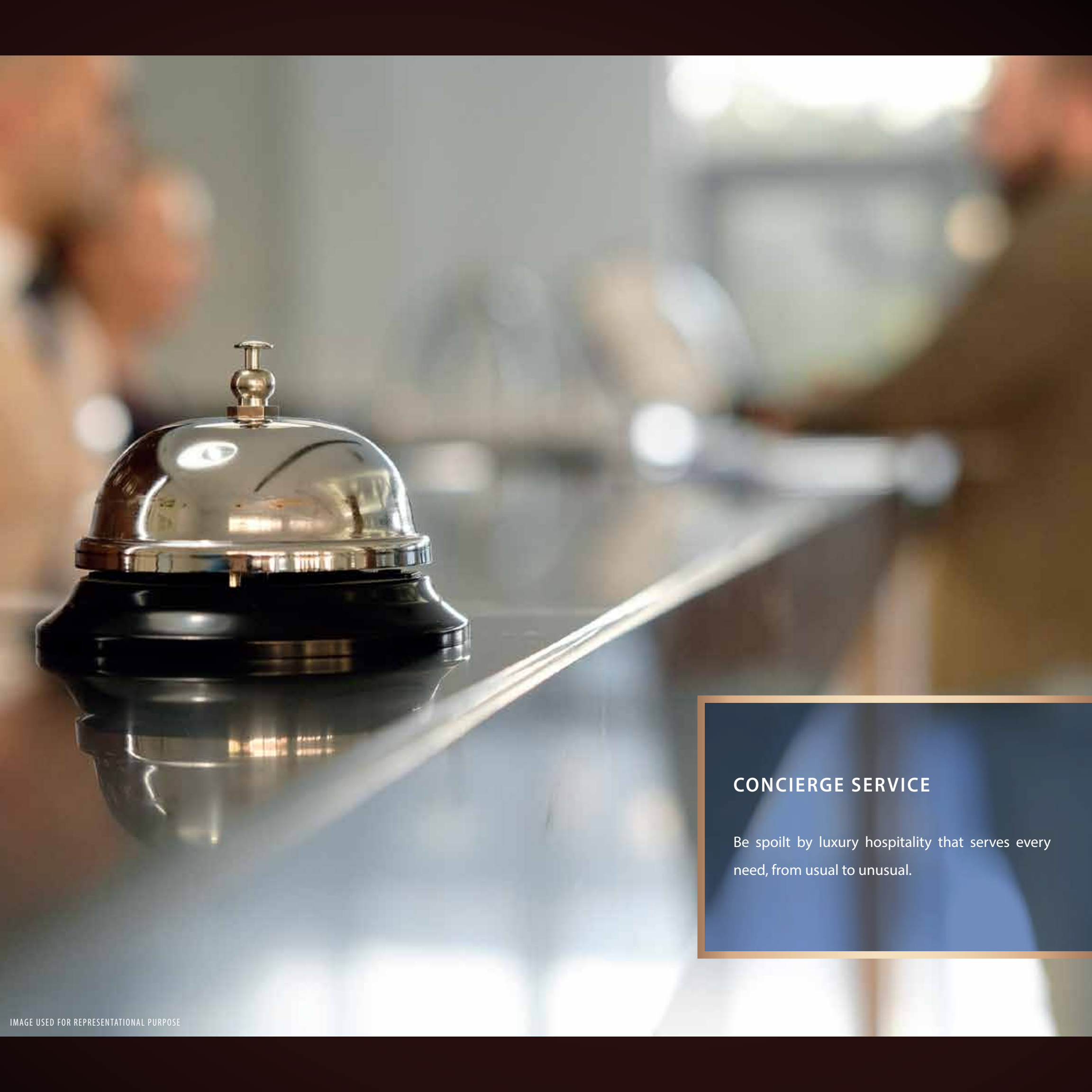
DROP-OFF PLAZA

Make your grand entrance as you glide your wheels following the driveway, towards the drop-off plaza.



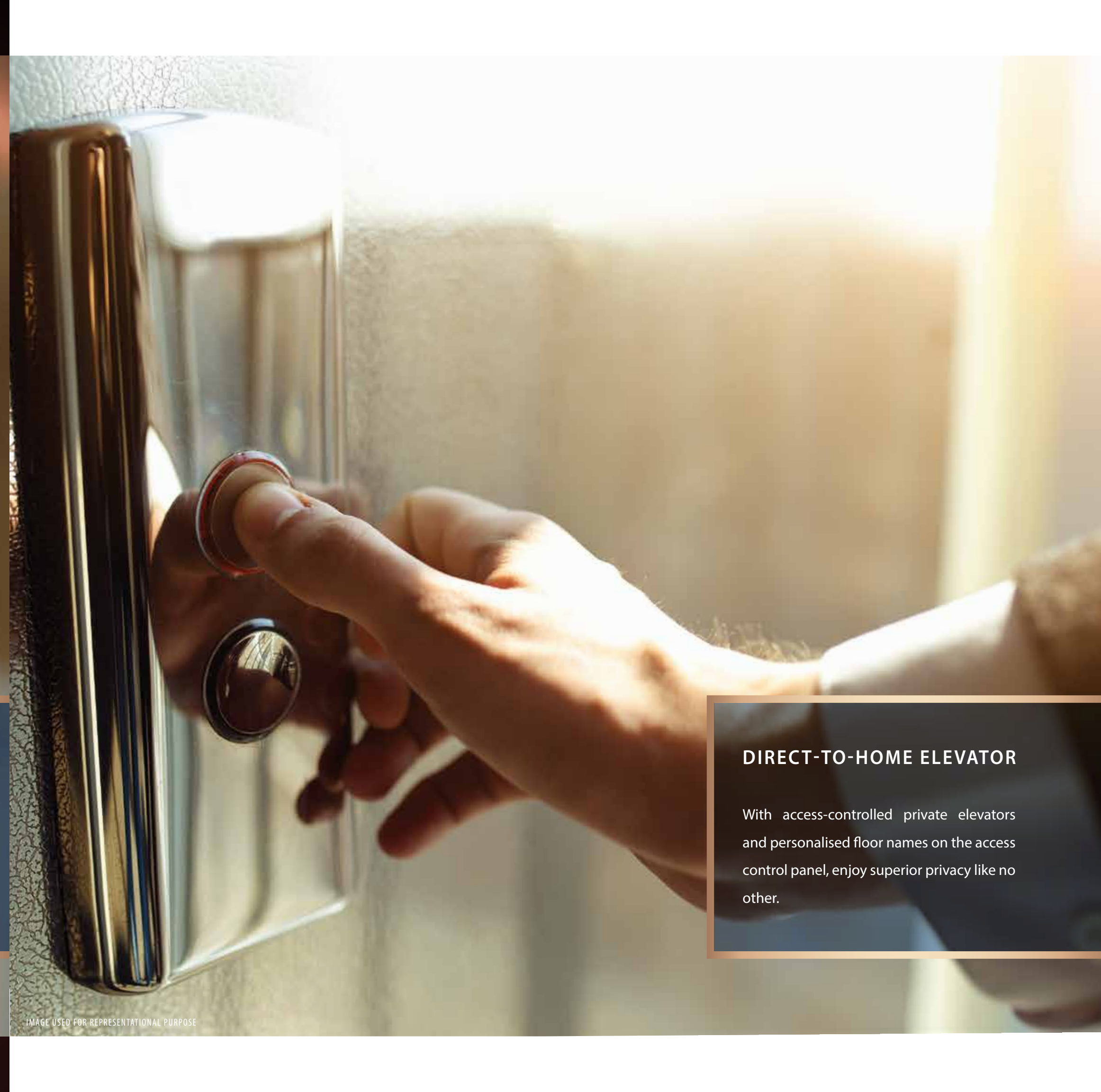
ENTRANCE LOBBY

Feel like a royal as you step into the luxurious 14' double height entrance lobby.



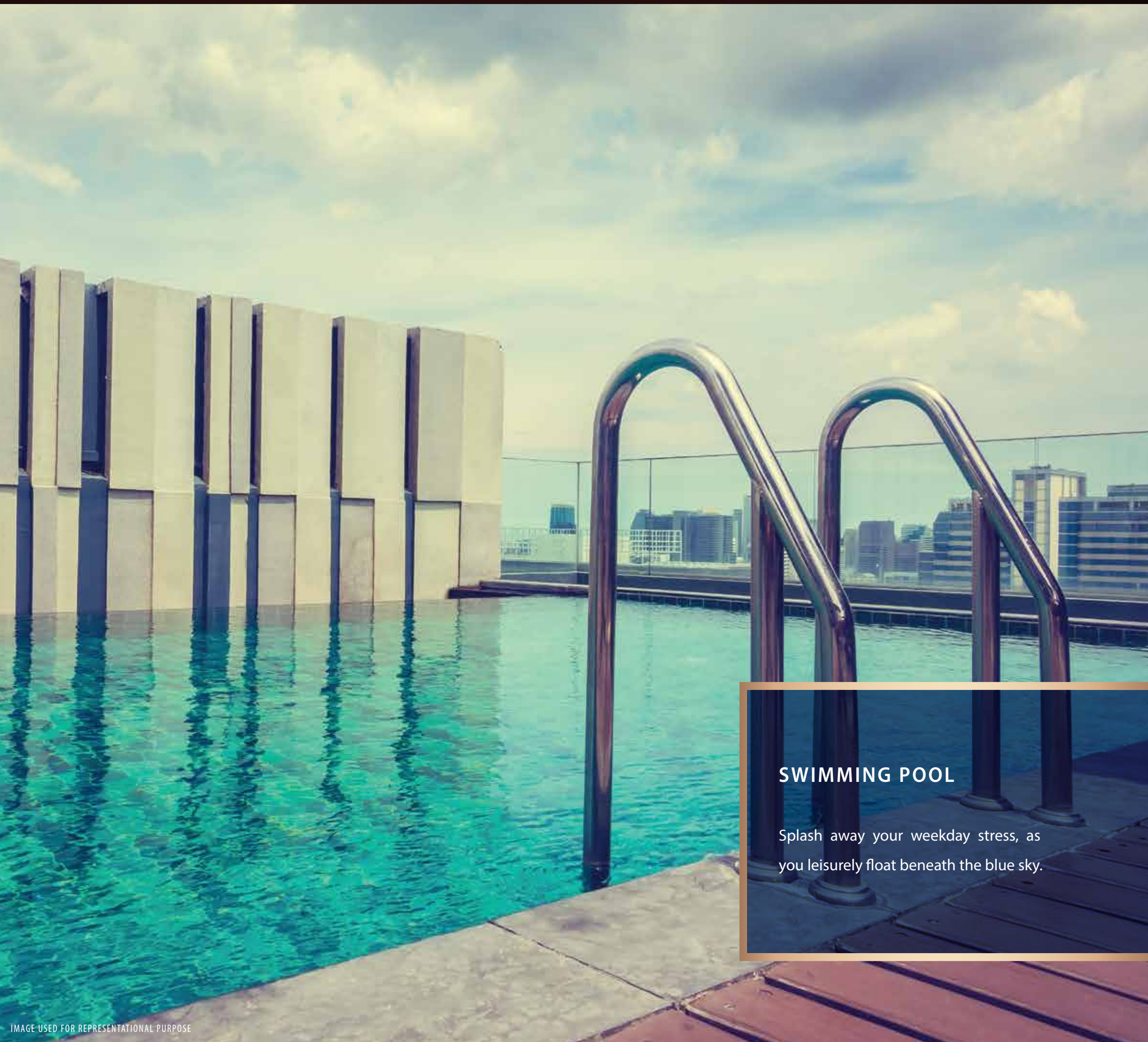
CONCIERGE SERVICE

Be spoilt by luxury hospitality that serves every need, from usual to unusual.



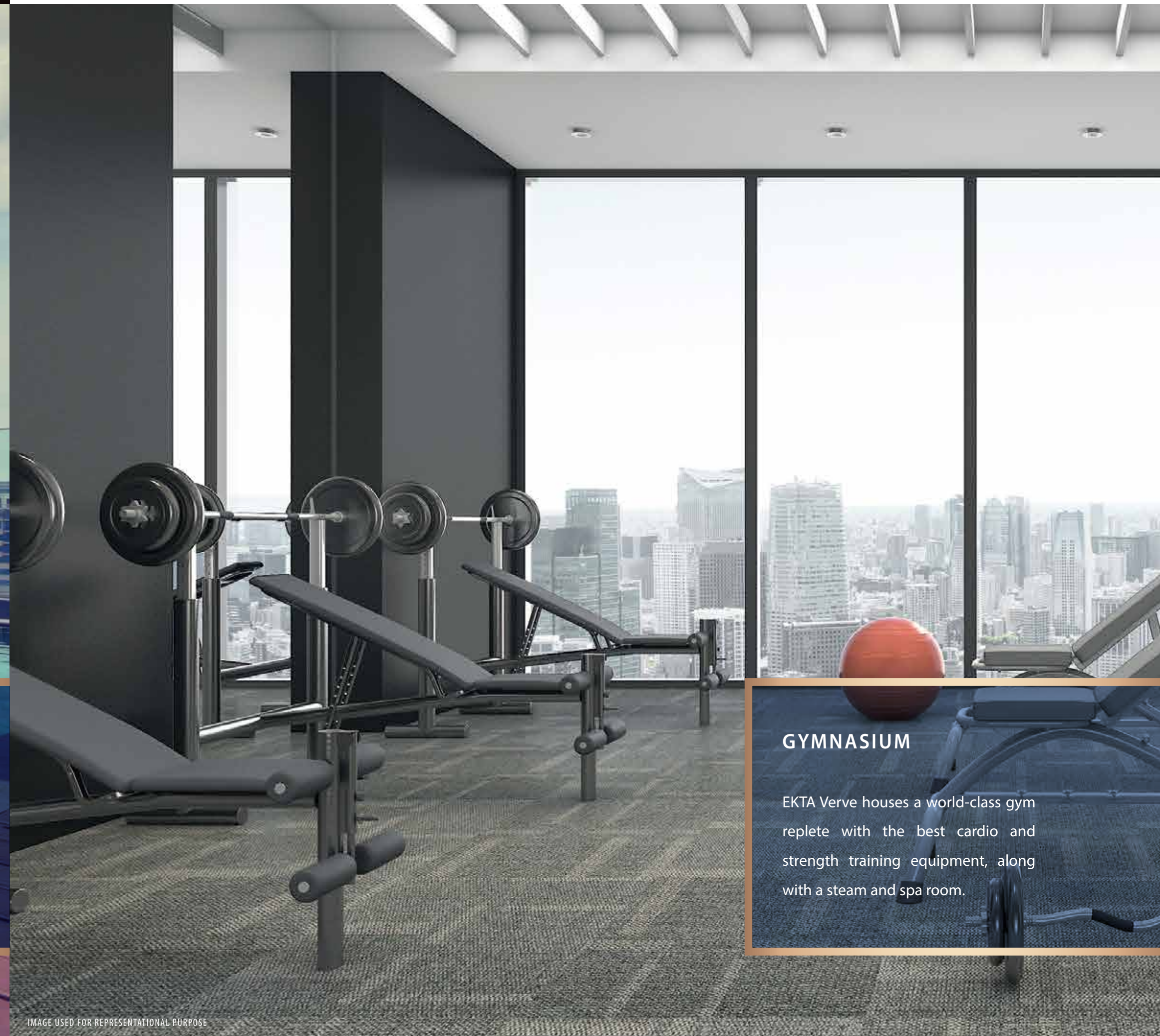
DIRECT-TO-HOME ELEVATOR

With access-controlled private elevators and personalised floor names on the access control panel, enjoy superior privacy like no other.



SWIMMING POOL

Splash away your weekday stress, as you leisurely float beneath the blue sky.



GYMNASIUM

EKTA Verve houses a world-class gym replete with the best cardio and strength training equipment, along with a steam and spa room.



SKY LOUNGE

The sky lounge is a roof-space garden idyll, with 360° panoramic city and sea views.



**CAPTIVATING LIVING SPACES ARE GOOD.
TASTEFULLY DESIGNED PALATIAL APARTMENTS ARE BETTER.**

EKTA Verve is designed with grandiosity in mind, to match the status of its high-flying residents. With just a single residence per floor, it offers solitude set aloft over the hustle of the alleyways. From features to amenities, fixtures to fittings, every aspect of EKTA Verve is fit for the royalty.



12'5" SLAB TO SLAB HEIGHT

The residences come with an impressive 12'5" slab to slab height, ensuring an air of grandeur. Irrespective of the address, this is not just incredible, but unheard and unseen.

PANORAMIC VISTAS

A peek from the apartment's French-style windows or the dreamy decks, lets you lose yourself in the splendid vistas of the city and the neighbourhood.



PREMIUM SPECIFICATIONS

From the moment you step inside the front door, the amenities continue to amaze. Internal apartment facilities are top-of-the-range and refined that residents would have to be more than lucky to find anywhere else.

LIVING ROOM & BEDROOM

- Imported Marble Flooring
- Air Conditioned Residences
- Electric Light Points & Premium Fixtures/Fittings
- High-end Aluminium Windows
- Lustre Paint
- Walk-in Wardrobe
- Beautiful False Ceiling

KITCHEN

- Italian Modular kitchen
- Hob & Chimney

BATHROOM

- Elegant Design
- Superior Quality Sanitaryware
- Glass Cubicle

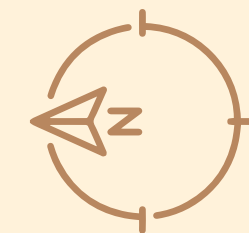
MASTER LAYOUT



AMENITIES DECK PLAN



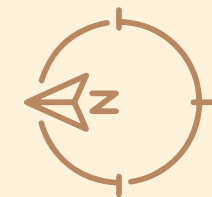
2nd PODIUM FLOOR
PLAN (E-DECK)



TYPICAL FLOOR PLAN

5BHK APARTMENT

1	LIVING & DINING	32'9"X18'0"
2	POWDER TOILET	6' "X4'0"
3	MASTER BEDROOM	12'0"X21'3"
4	W.I.W.	6'0"X9'0"
5	MASTER BATHROOM	8'6"X9'0"
6	BEDROOM 1	12'0"X14'0"
		4'0"X3'0"
7	BATHROOM 1	11'0"X5'0"
8	BEDROOM 2	12'0"X19'0"
		5'6"X2'3"
9	W.I.W.	6'0"X7'0"
10	BATHROOM 2	7'9"X9'0"
11	BEDROOM 3	10'0"X14'0"
		4'6"X5'6"
12	BATHROOM 3	8'0"X5'0"
13	BEDROOM 4	11'0"X14'0"
14	BATHROOM 4	7'6"X5'0"
15	KITCHEN	9'0"X15'9"
16	PANTRY	9'0"X5'0"
17	PASSAGE 1	16'6"X3'6"
18	PASSAGE 2	13'0"X3'6"
19	DECK	20'3" X5'6"
20	PRIVATE LOBBY	10'3"X7'6"
21	GUEST LOBBY	13'6"X6'0"
22	SERVANT BATHROOM	3'6"X6'3"



TYPICAL FLOOR PLAN

4BHK APARTMENT

1	LIVING & DINING	32'9"X18'0"
2	POWDER TOILET	3' 6"X5'0"
3	MASTER BEDROOM	12'0"X16'0"
4	MASTER BATHROOM	8'0"X5'0"
5	BEDROOM 1	12'0"X16'0"
6	BATHROOM 1	8'0"X5'0"
7	BEDROOM 2	10'0"X15'9"
8	BATHROOM 2	8'0"X5'0"
9	BEDROOM 3	11'0"X14'0"
10	BATHROOM 3	11'0"X5'0"
11	KITCHEN	13'0"X9'0"
12	PASSAGE 1	16'6"X3'6"
13	PASSAGE 2	4'0"X3'0"
14	PRIVATE LOBBY	10'3"X7'6"
15	GUEST LOBBY	13'6"X6'0"
16	SERVANT BATHROOM	3'6"X6'3"



TYPICAL FLOOR PLAN

3BHK APARTMENT NO.1

1	LIVING & DINING	16'3"X18'0"
2	POWDER TOILET	3'6"X5'0"
3	MASTER BEDROOM	12'0"X16'0"
4	MASTER BATHROOM	8'0"X5'0"
5	BEDROOM 1	10'0"X14'0"
		4'6"X5'6"
6	BATHROOM 1	8'0"X5'0"
7	BEDROOM 2	11'0"X14'0"
8	BATHROOM 2	7'6"X5'0"
9	KITCHEN	14'0"X9'0"
10	PASSAGE 1	16'6" X3'6"

3BHK APARTMENT NO.2

1	LIVING & DINING	16'3"X18'0"
2	POWDER TOILET	3'6"X5'0"
3	MASTER BEDROOM	12'0"X16'0"
4	MASTER BATHROOM	8'0"X5'0"
5	BEDROOM 1	11'0"X14'0"
6	BATHROOM 1	11'0"X5'0"
7	BEDROOM 2	10'0"X15'9"
8	BATHROOM 2	8'0"X5'0"
9	KITCHEN	13'0"X9'0"
10	PASSAGE 1	16'6"X3'6"
11	PASSAGE 2	4'0"X3'0"



TEAM EKTA VERVE

DESIGN ARCHITECTS:

CHANDRASHEKHAR KANETKAR & ASSOCIATES

STRUCTURAL ARCHITECTS:

J + W ASSOCIATES

DESIGN & COMMUNICATION:

4 AM WORLDWIDE

LIGHTING CONSULTANT:

LIGHT@WORK DESIGN CONSULTANTS



EKTA VERVE

16th RD., OPP. EKTA EROS,
KHAR WEST, MUMBAI,
MAHARASHTRA 400 052

 022 6115 2424 |  WWW.EKTAWORLD.COM

Disclaimer: The plans, specifications, images and other details herein are only indicative and the developer / promoter reserves the right to change any or all of these in the interest of the development as per applicable rules and regulations. This printed material does not constitute an offer and/or contract of any type between the owner/developer and the recipient. Any prospective sale shall be governed by the terms and conditions of the agreement for sale to be entered into between the parties. The Property is mortgaged with Piramal Capital and Housing Finance Limited. The NO Objection Certificate/permission of the mortgagee bank/institution would be provided to the purchaser for sale of flats/units, if required. CGI stands for computer generated image.



Maha RERA Registration No.: P51800021089 | <https://mahatera.mahaonline.gov.in/>