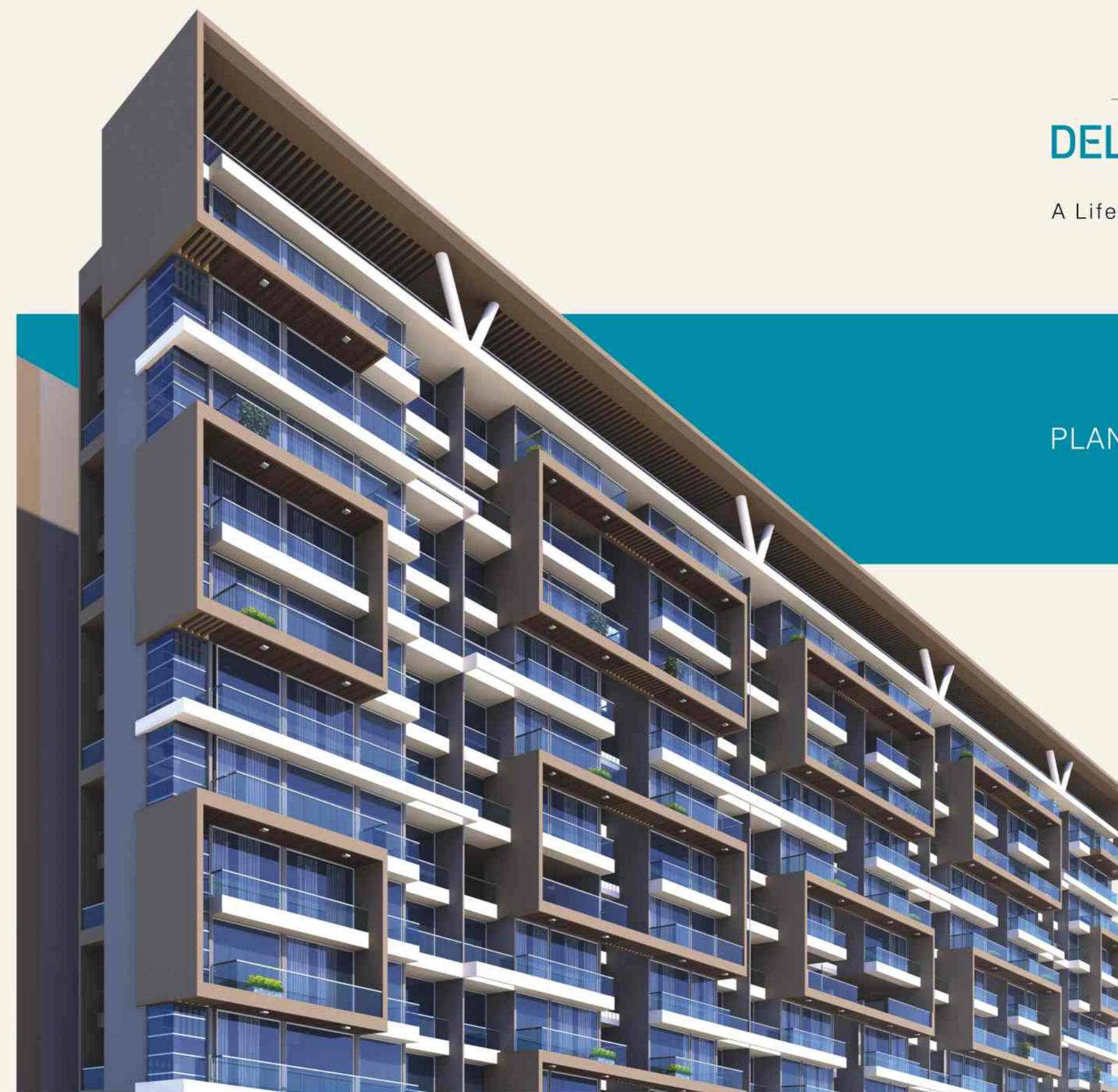




DELTA TOWER-2

A Lifestyle with Distinction

PLAN PRESENTATION



www.eyreanddesign.in

JOINT VENTURE BY



REHAB & BALAJI
GROUP
bridging the gap

SITE:

Plot No. 2, Sector - 8, Ulwe

CORPORATE OFFICE

BALAJI GROUP

V Times Square, Level 13th, Plot No.3, Sector-15,
Palm Beach Road, C.B.D. Belapur - 400 614

Tel Off : 022-27560450 / 460

E-mail : balajivtimes@yahoo.in

BOOKING CONTACT :

+91 93222 99099, 80809 95670

REHAB GROUP

Shreenathji Enterprise, Gitaneel Arcade, 5th Floor,
Hill Road, Bandra (w), Mumbai - 400 050

Tel Off : 022-26420359 / 26423306

E-mail : rehabhousingpltd@gmail.com



DELTA TOWER-2

A Lifestyle with Distinction

FOR THOSE WHO
DESIRE
MODERN LIFESTYLE

Everything about Delta Tower-2 signals a residence in a league of its own, especially its striking appearance. Surrounding you with style and luxury, even before you step into your residence. It's a lifestyle experience that offers you just about everything. Luxury, comfort and privacy in a seamless blend with impeccable lifestyle. That's what modern living is all about.



FOR THOSE WHO LIVE LIFE TO THE FULLEST

Delta Tower-2 with its modern amenities, world-class infrastructure and adequate greens, is a place where fun and relaxation will be an integral part of every day. From modern sports facilities to keep you charged and healthy to shimmering blue swimming pool for relaxation, everything here spells complete and joyful living experience.





DELTA TOWER-2

A Lifestyle with Distinction

FOR THOSE
WHO LIKE ENTICING
LIVING SPACE

When it comes to the good things in life, it's natural to expect more. Style and comfort with a little more space, a little more luxury. With its fantastic location, lifestyle amenities, open landscaped spaces and a great layout & design, Delta Tower-2 has it all. This fine residential address will create a lifestyle for its residents well beyond their expectations.



DELTA TOWER-2
A Lifestyle with Distinction

DELTA TOWER-1
The Crux of CLASSY LIFE!



GARDEN



GUEST BEDROOM



SEATING AREA



SWIMMING POOL



BASKET BALL



SKATING RINK



WOODEN DECK



JOGGING TRACK



INDOOR GAMES



STEAM & SAUNA



GYMNASIUM



GAZEBO

FOR THOSE WHO
LOVE THE BEST
IN EVERYTHING

**GROUND
FLOOR PLAN**



**FIRST
FLOOR PLAN**





SECOND FLOOR PLAN

LEGENDS

- 01) GARDEN
- 02) CHESS
- 03) SEATING AREA
- 04) SWIMMING POOL
- 05) WOODEN DECK
- 06) BASKET BALL
- 07) SKATING RINK
- 08) GAZEBO
- 09) JOGGING TRACK
- 10) SOCIETY OFFICE
- 11) INDOOR GAMES
- 12) LADIES CHANGE ROOM
- 13) GENTS CHANGE ROOM
- 14) STEAM
- 15) SAUNA
- 16) GYMNASIUM
- 17) GUEST BEDROOM



TYPICAL FLOOR PLAN (3,5,7,9 & 11)





TYPICAL
FLOOR PLAN
(4,6,10,12 &14)



EIGHTH
FLOOR PLAN



THIRTEENTH
FLOOR PLAN



2 BHK
TYPICAL FLOOR
(3,5,7,9,11)

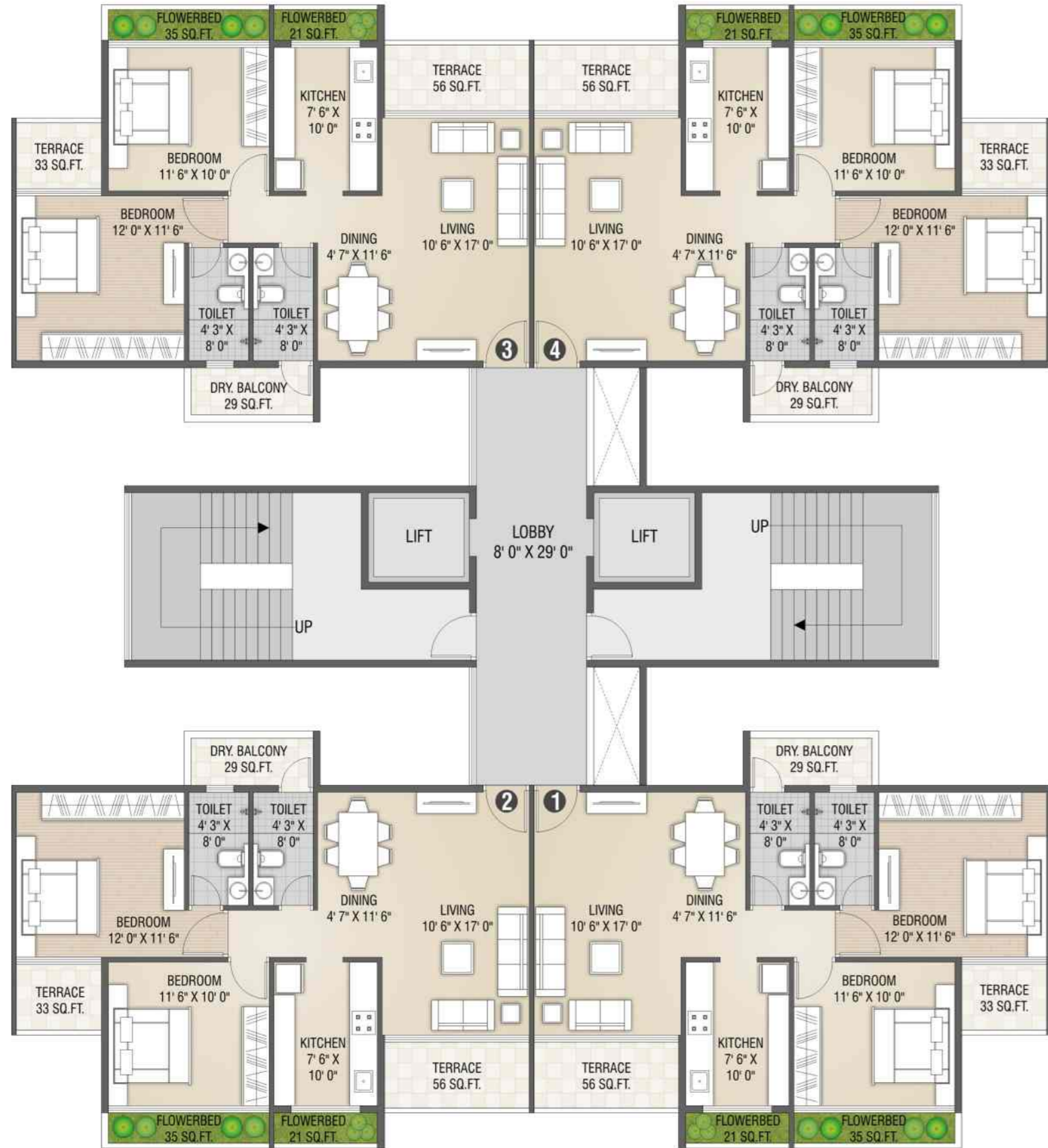
WING - A





2 BHK
TYPICAL FLOOR
(3,5,7,9,11)

WING - B



2 BHK
TYPICAL FLOOR
(3,5,7,9,11)

WING - C





2 & 3 BHK
TYPICAL FLOOR
(3,5,7,9,11)

WING - D



2 & 3 BHK
TYPICAL FLOOR
(3,5,7,9,11)

WING - E





2 & 3 BHK
TYPICAL FLOOR
(4,6,10,12,14)

WING - A



2 BHK
TYPICAL FLOOR
(4,6,10,12,14)

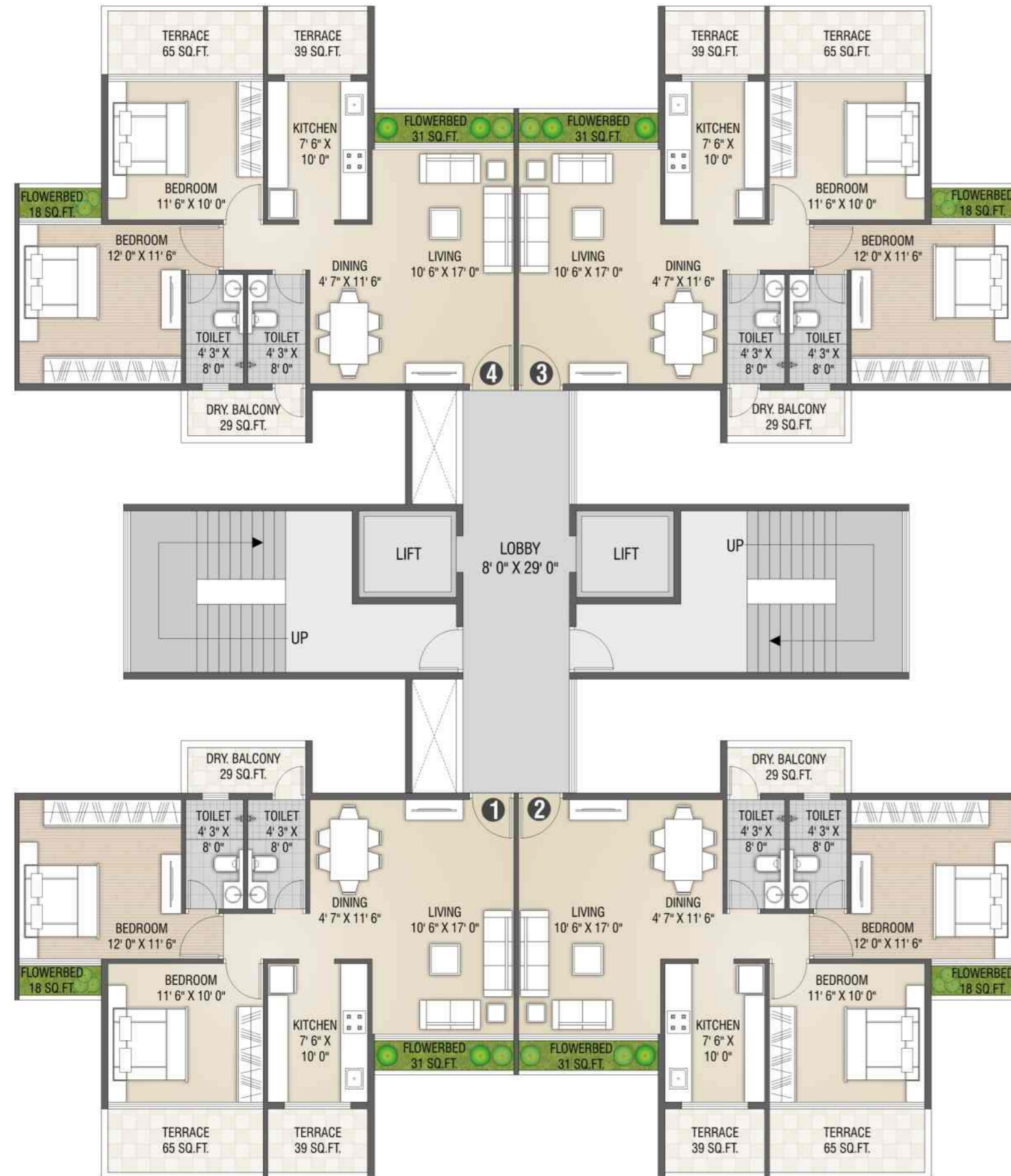
WING - B





2 BHK
TYPICAL FLOOR
(4,6,10,12,14)

WING - C



2 & 3 BHK
TYPICAL FLOOR
(4,6,10,12,14)

WING - D





2 & 3 BHK TYPICAL FLOOR (4,6,10,12,14)

WING - E



2 & 3 BHK EVEN FLOOR PLAN (8)

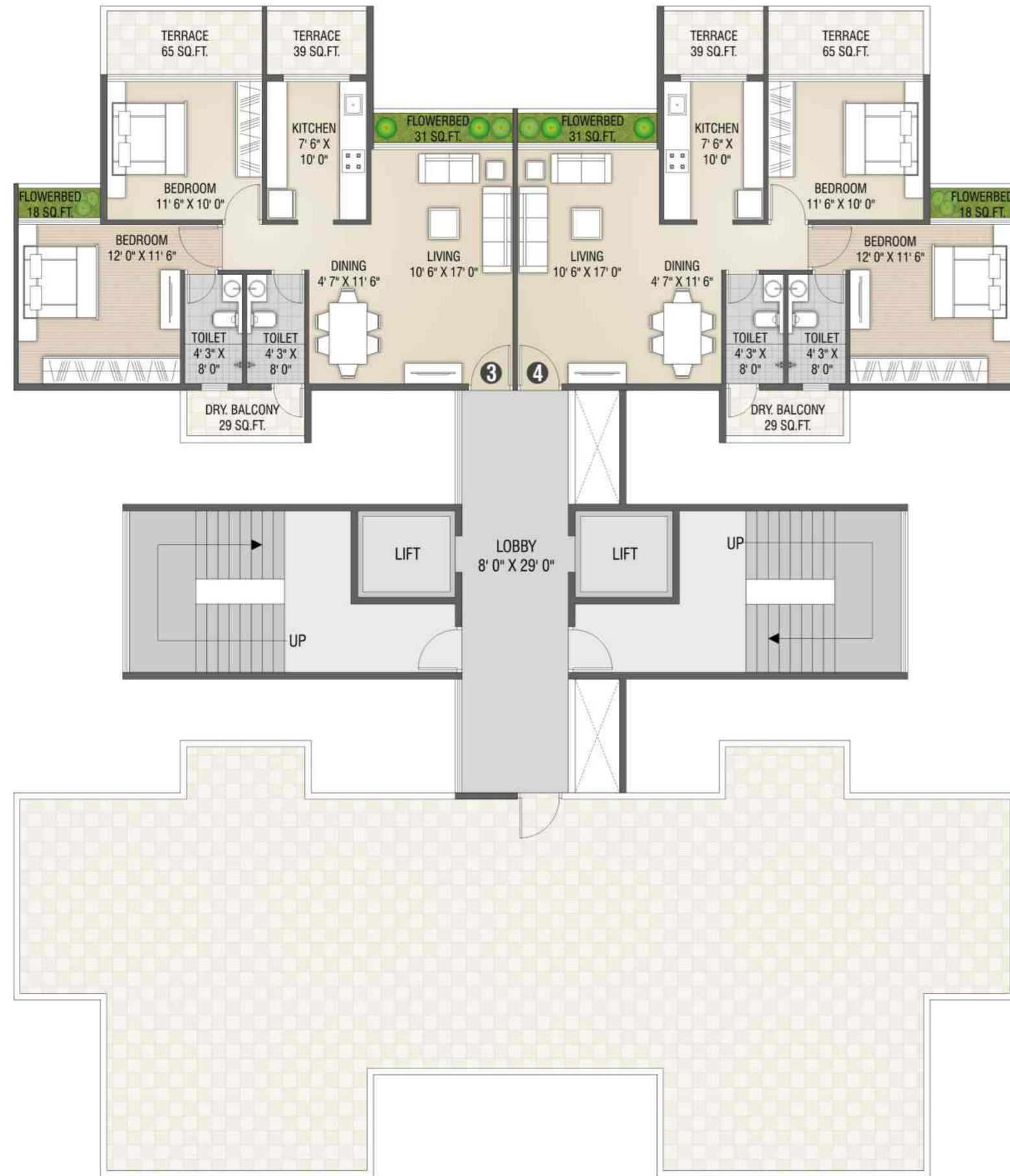
WING - A





2 BHK
EVEN FLOOR PLAN
(8)

WING - B



2 BHK
EVEN FLOOR PLAN
(8)

WING - C





2 & 3 BHK
EVEN FLOOR PLAN
(8)

WING - D



2 & 3 BHK
EVEN FLOOR PLAN
(8)

WING - E





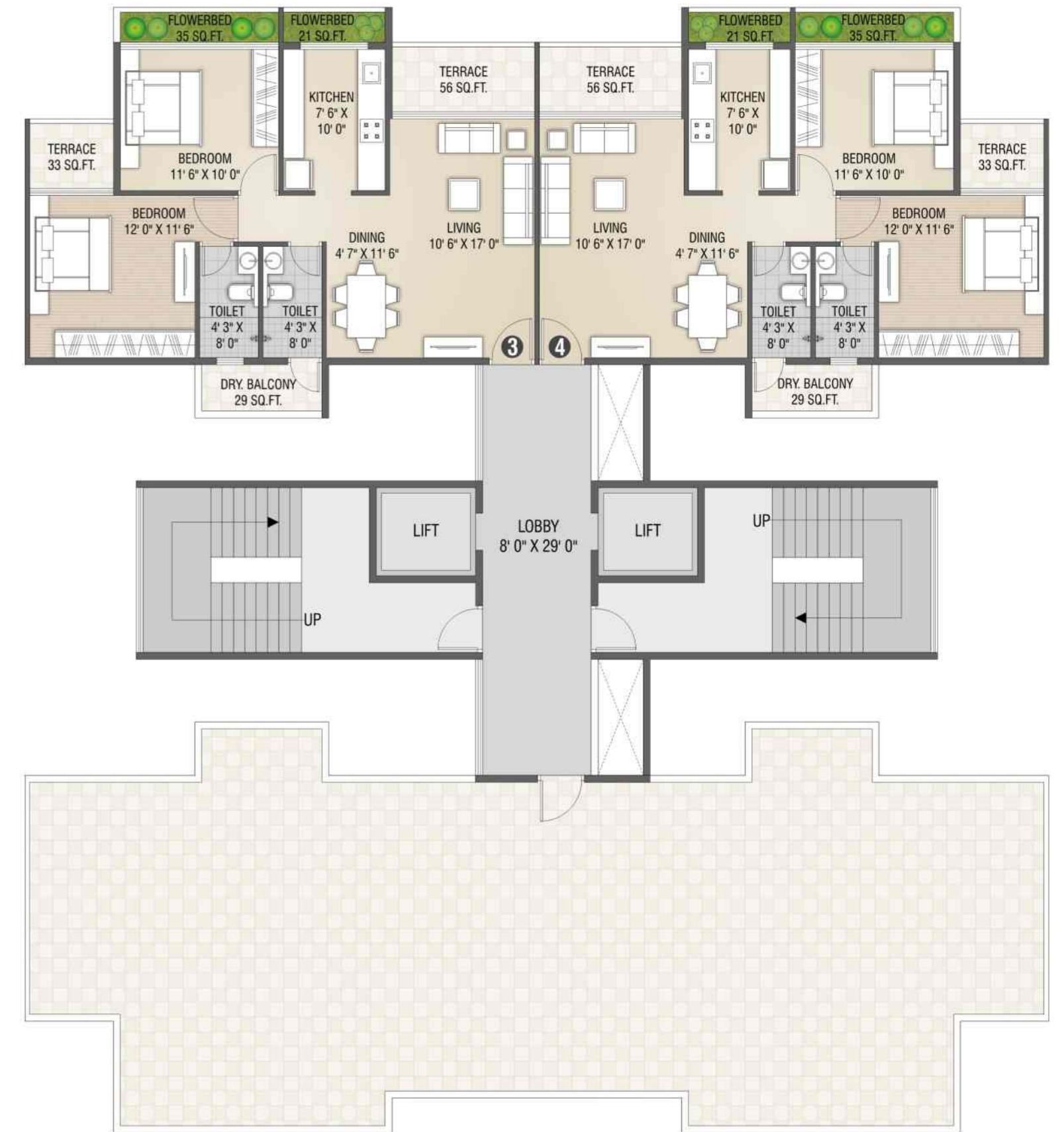
2 & 3 BHK
ODD FLOOR PLAN
(13)

WING - A



2 BHK
ODD FLOOR PLAN
(13)

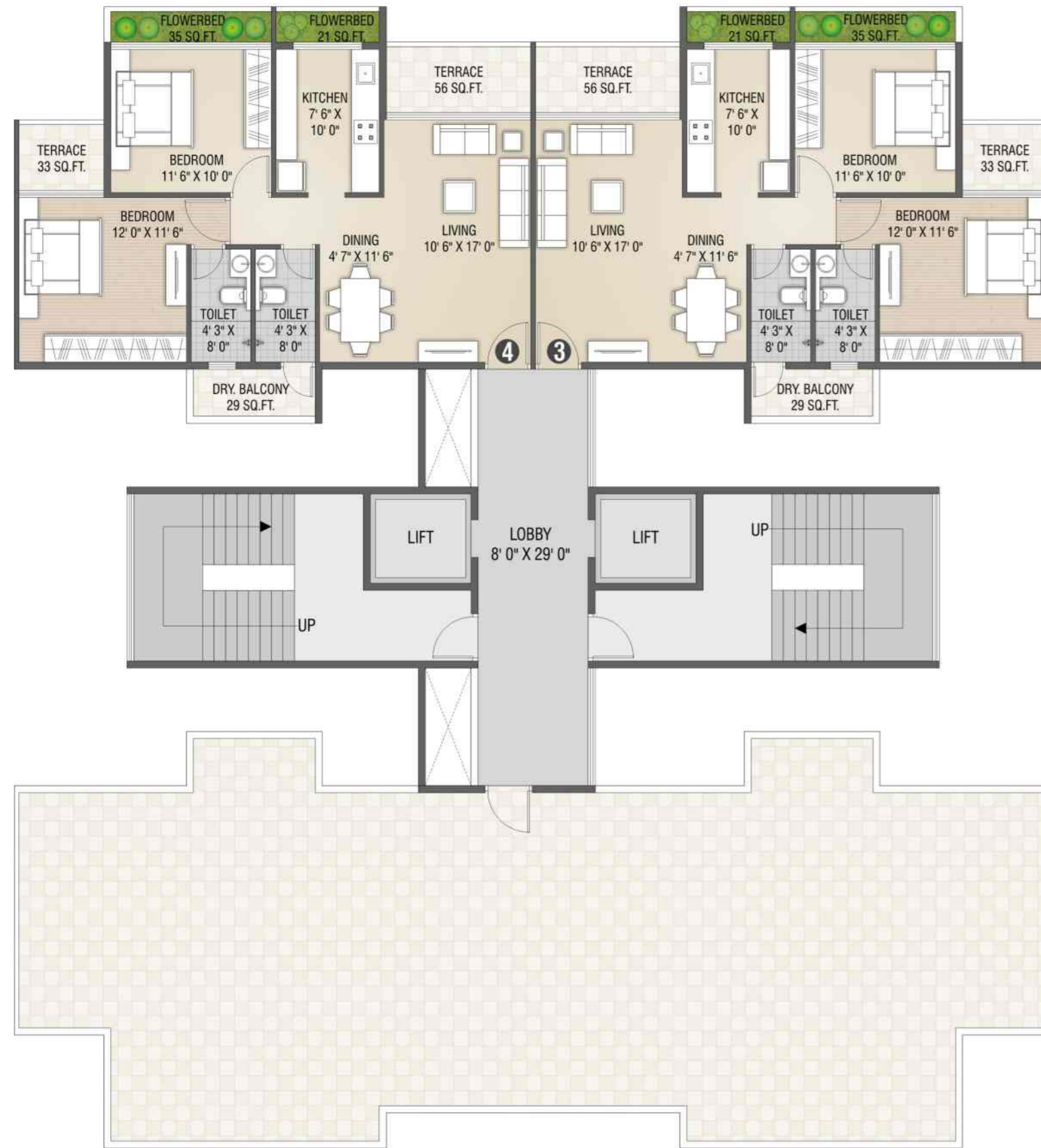
WING - B





2 BHK
ODD FLOOR PLAN
(13)

WING - C



2 & 3 BHK
ODD FLOOR PLAN
(13)

WING - D





2 & 3 BHK
ODD FLOOR PLAN
(13)

WING - E



INTERNAL SPECIFICATION

FLOORING : Vitrified flooring in all rooms. Anti-skid tiles in attached terrace area

KITCHEN : Granite kitchen platform with parallel service platform. Stainless steel sink and sink mixture. Provisions for exhaust fan and water purifier

WALL & PAINTS : Gypsum / POP finished internal walls with premium plastic paints

SECURITY : Video door phone security system in each flat with camera at entry gate

DOORS AND WINDOWS : Attractive main door with elegant big handles and locks. Anodized aluminium sliding windows with tinted glass. Marble and granite window sill

ELECTRIFICATION : Branded concealed copper wiring with isolater / MCB. 3 phase electric meter for 3 BHK & 1 phase for 2 BHK. TV, telephone and internet points in all rooms. A.C. point in bedrooms

TOILETS : Designer bathrooms with branded sanitaryware. Concealed plumbing with premium C.P fittings. Geyser connection to all bathrooms

STRUCTURAL FEATURES

- Earthquake resistance RCC frame structure
- Two coats external plaster with good quality sand or roofit mix
- Decorative compound wall & building entrance gate
- Premium quality pure acrylic external paint of building

GENERAL FEATURES

- Ample sheltered & open parking space on the ground & first floor
- Decorative entrance lobby with air conditioned lounge
- Branded high speed elevator in each wing
- Power backup facility for lifts, water pump and lighting for common area
- Decorative checkered stone tile in surrounding compound area

WORLD CLASS AFFILIATION

BATH FITTING



SANITARY



AUTO LIFT



WIRING



ELECTRIFICATION

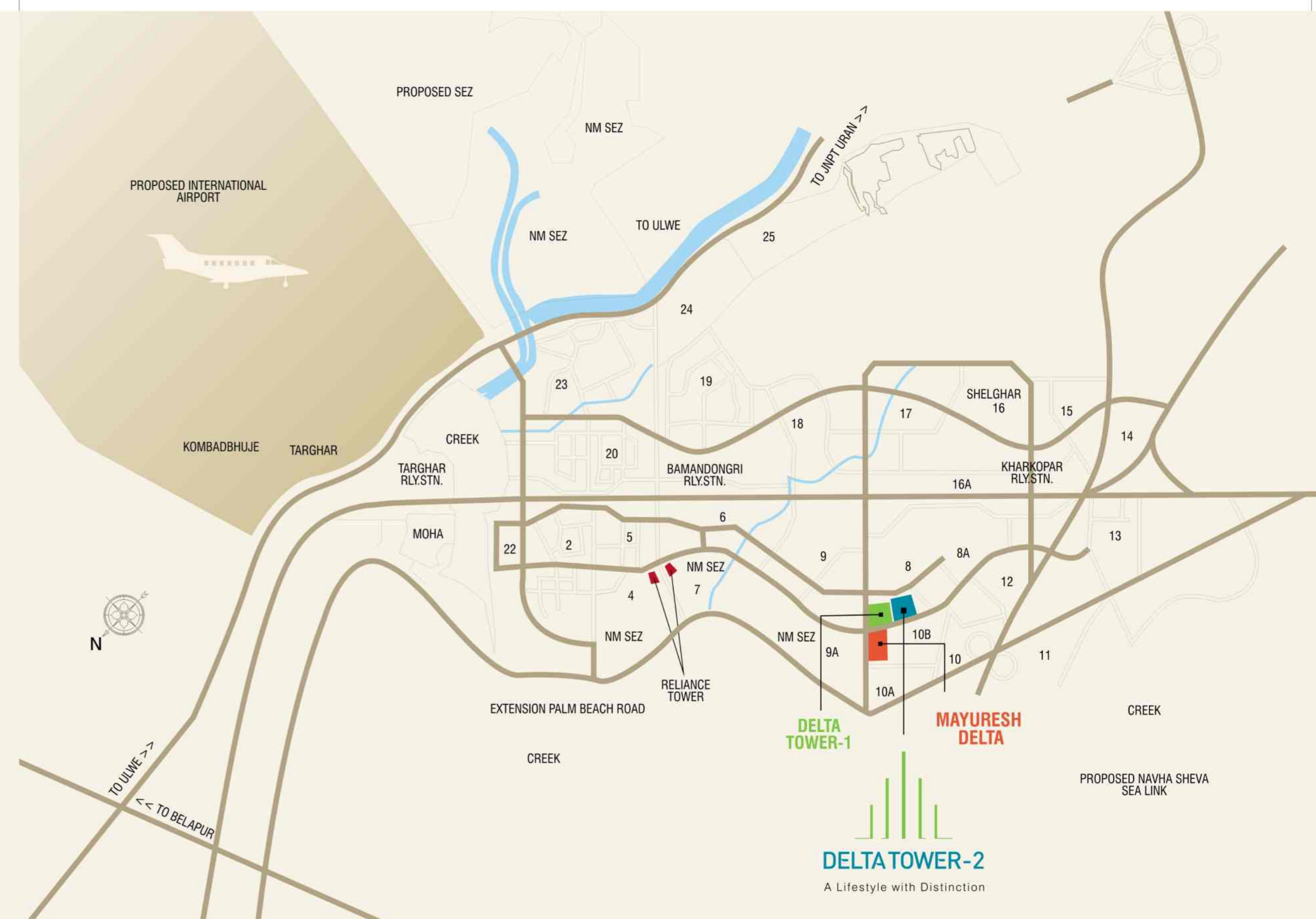


KITCHEN SINK



*The above brands can be changed or equivalent brands can be placed by the developers.

NOTES • Document Charges, M.S.E.D.C. Charges, Service Tax, VAT etc shall be borne by purchaser • No external or internal changes shall be allowed without prior permission • Any additional changes of duties levied by the government / local authority during or after the completion of the scheme will be borne by the purchaser • This brochure is for general information and shall not form part of any agreement.



Architect :
Soyuz Talib Architect Pvt.Ltd.
Navi Mumbai

Structural Engineer
Structural Concept
Navi Mumbai

Landscape Designer
Manind Prasad
Navi Mumbai

MEP Consultant
Econ Pollution Control
Consultants - Mumbai

Legal Advisor
Law Charter - Mumbai
Himanshu Bheda & Co. - Navi Mumbai