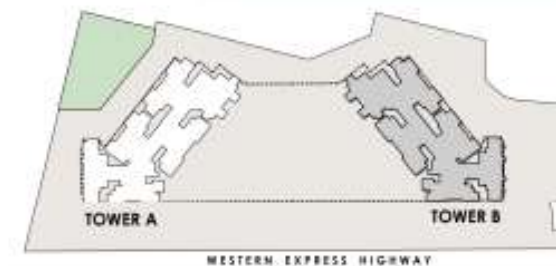




TYPICAL FLOOR PLAN

TOWER B



PLAN NOT TO SCALE

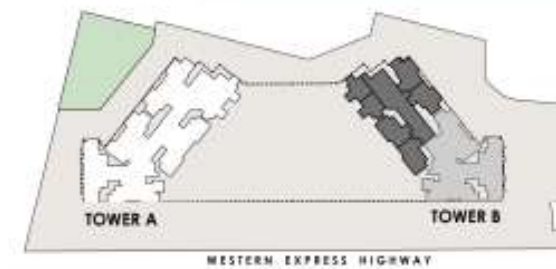
MahaRERA Registration No: P51800035093 Available on: <https://maharera.mahaonline.gov.in>

Disclaimer: The Furniture, Fixtures, Interior Work, Design options and Fittings as displayed in this communication are for showcasing purpose only and do not form part of standard amenities to be provided in the Flat/Premises. The Flat/Premises offered for Sale are unfurnished and the registered Agreement for Sale between the Promoter and the purchaser alone will be final and binding. The areas & dimensions shown herein are subject to a variation of +/- 3%. Promoter reserves its right to upgrade, modify, relocate, enhance, make changes, delete or alter the common amenities, refuge floor &/or height of the building and /or any features or as may be required as per approvals & permission granted by the concerned authorities from time to time. Joint development with Surya Builders and Developers.



TYPICAL FLOOR PLAN

TOWER B - 01



PLAN NOT TO SCALE

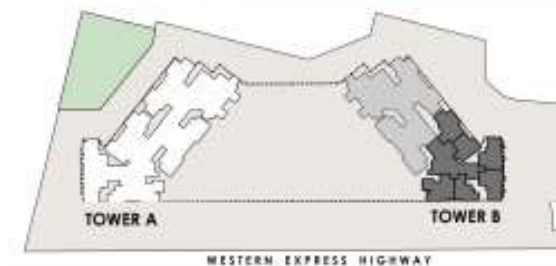
MahaRERA Registration No: P51800035093  Available on: <https://maharera.mahaonline.gov.in>

Disclaimer: The Furniture, Fixtures, Interior Work, Design options and Fittings as displayed in this communication are for showcasing purpose only and do not form part of standard amenities to be provided in the Flat/Premises. The Flat/Premises offered for Sale are unfurnished and the registered Agreement for Sale between the Promoter and the purchaser alone will be final and binding. The areas & dimensions shown herein are subject to a variation of +/- 3%. Promoter reserves its right to upgrade, modify, relocate, enhance, make changes, delete or alter the common amenities, refuge floor &/or height of the building and /or any features or as may be required as per approvals & permission granted by the concerned authorities from time to time. Joint development with Surya Builders and Developers.



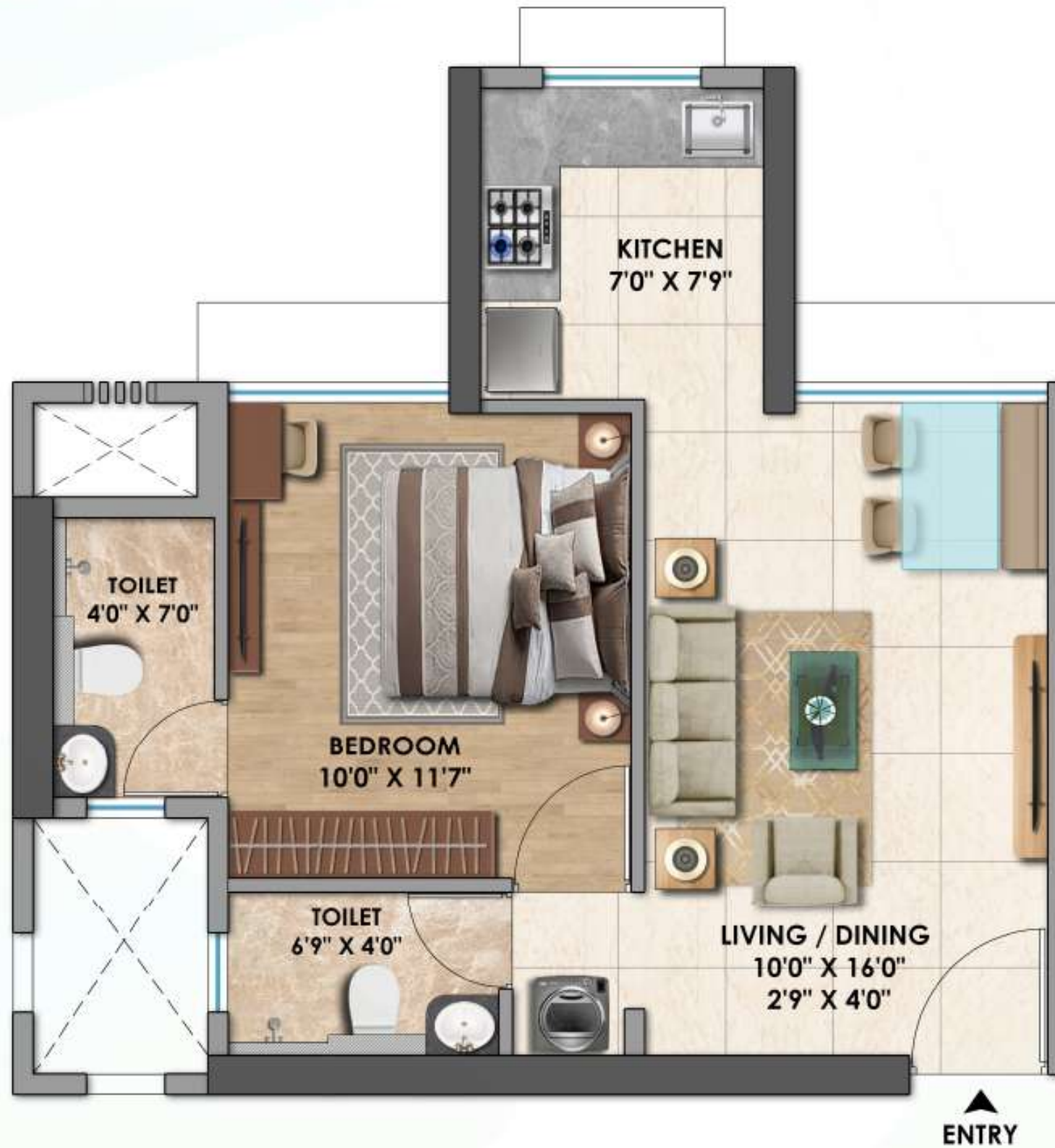
TYPICAL FLOOR PLAN

TOWER B - 02

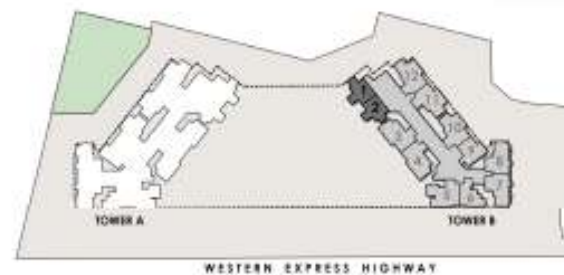


MahaRERA Registration No: P51800035093  Available on: <https://maharera.mahaonline.gov.in>

Disclaimer: The Furniture, Fixtures, Interior Work, Design options and Fittings as displayed in this communication are for showcasing purpose only and do not form part of standard amenities to be provided in the Flat/Premises. The Flat/Premises offered for Sale are unfurnished and the registered Agreement for Sale between the Promoter and the purchaser alone will be final and binding. The areas & dimensions shown herein are subject to a variation of +/- 3%. Promoter reserves its right to upgrade, modify, relocate, enhance, make changes, delete or alter the common amenities, refuge floor &/or height of the building and /or any features or as may be required as per approvals & permission granted by the concerned authorities from time to time. Joint development with Surya Builders and Developers.



1 BHK
418 SQ.FT.



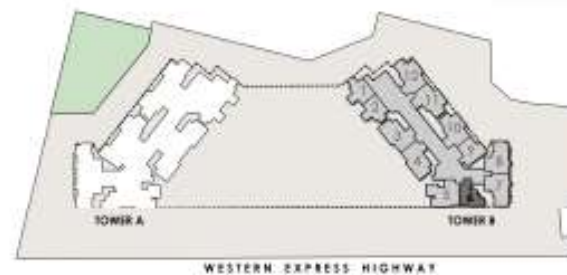
PLAN NOT TO SCALE

MahaRERA Registration No: P51800035093 Available on: <https://maharera.mahaonline.gov.in>

Disclaimer: The Furniture, Fixtures, Interior Work, Design options and Fittings as displayed in this communication are for showcasing purpose only and do not form part of standard amenities to be provided in the Flat/Premises. The Flat/Premises offered for Sale are unfurnished and the registered Agreement for Sale between the Promoter and the purchaser alone will be final and binding. The areas & dimensions shown herein are subject to a variation of +/- 3%. Promoter reserves its right to upgrade, modify, relocate, enhance, make changes, delete or alter the common amenities, refuge floor &/or height of the building and /or any features or as may be required as per approvals & permission granted by the concerned authorities from time to time. Joint development with Surya Builders and Developers.



1 BHK
430 SQ.FT.



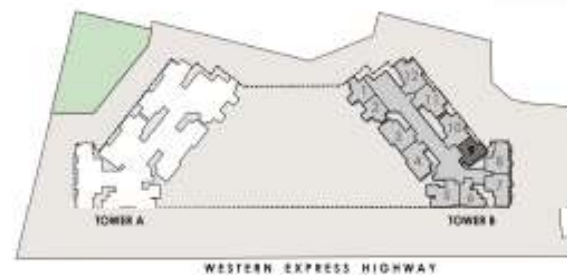
PLAN NOT TO SCALE

MahaRERA Registration No: P51800035093  Available on: <https://maharera.mahaonline.gov.in>

Disclaimer: The Furniture, Fixtures, Interior Work, Design options and Fittings as displayed in this communication are for showcasing purpose only and do not form part of standard amenities to be provided in the Flat/Premises. The Flat/Premises offered for Sale are unfurnished and the registered Agreement for Sale between the Promoter and the purchaser alone will be final and binding. The areas & dimensions shown herein are subject to a variation of +/- 3%. Promoter reserves its right to upgrade, modify, relocate, enhance, make changes, delete or alter the common amenities, refuge floor &/or height of the building and /or any features or as may be required as per approvals & permission granted by the concerned authorities from time to time. Joint development with Surya Builders and Developers.



1 BHK
435 SQ.FT.



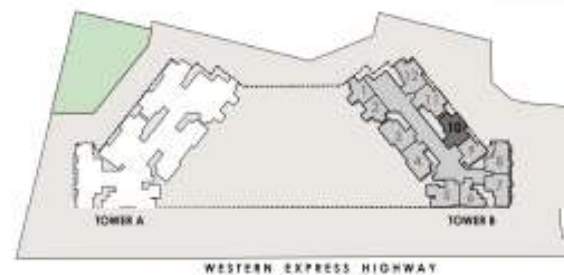
PLAN NOT TO SCALE

MahaRERA Registration No: P51800035093 Available on: <https://maharera.mahaonline.gov.in>

Disclaimer: The Furniture, Fixtures, Interior Work, Design options and Fittings as displayed in this communication are for showcasing purpose only and do not form part of standard amenities to be provided in the Flat/Premises. The Flat/Premises offered for Sale are unfurnished and the registered Agreement for Sale between the Promoter and the purchaser alone will be final and binding. The areas & dimensions shown herein are subject to a variation of +/- 3%. Promoter reserves its right to upgrade, modify, relocate, enhance, make changes, delete or alter the common amenities, refuge floor &/or height of the building and /or any features or as may be required as per approvals & permission granted by the concerned authorities from time to time. Joint development with Surya Builders and Developers.



2 BHK
618 SQ.FT.



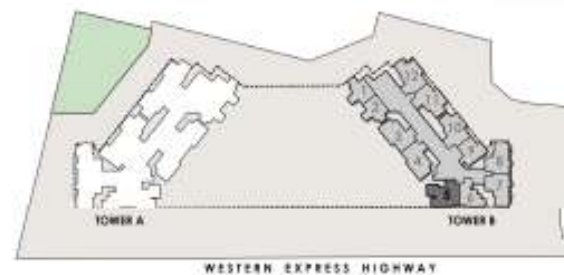
PLAN NOT TO SCALE

MahaRERA Registration No: P51800035093 Available on: <https://maharera.mahaonline.gov.in>

Disclaimer: The Furniture, Fixtures, Interior Work, Design options and Fittings as displayed in this communication are for showcasing purpose only and do not form part of standard amenities to be provided in the Flat/Premises. The Flat/Premises offered for Sale are unfurnished and the registered Agreement for Sale between the Promoter and the purchaser alone will be final and binding. The areas & dimensions shown herein are subject to a variation of +/- 3%. Promoter reserves its right to upgrade, modify, relocate, enhance, make changes, delete or alter the common amenities, refuge floor &/or height of the building and /or any features or as may be required as per approvals & permission granted by the concerned authorities from time to time. Joint development with Surya Builders and Developers.



2 BHK
632 SQ.FT.



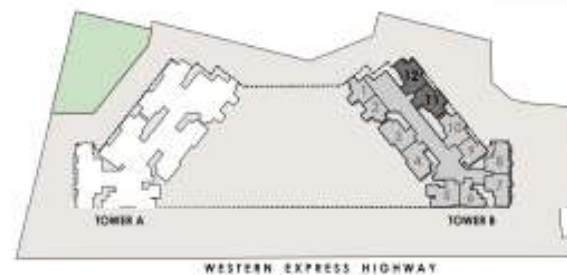
PLAN NOT TO SCALE

MahaRERA Registration No: P51800035093 Available on: <https://maharera.mahaonline.gov.in>

Disclaimer: The Furniture, Fixtures, Interior Work, Design options and Fittings as displayed in this communication are for showcasing purpose only and do not form part of standard amenities to be provided in the Flat/Premises. The Flat/Premises offered for Sale are unfurnished and the registered Agreement for Sale between the Promoter and the purchaser alone will be final and binding. The areas & dimensions shown herein are subject to a variation of +/- 3%. Promoter reserves its right to upgrade, modify, relocate, enhance, make changes, delete or alter the common amenities, refuge floor &/or height of the building and /or any features or as may be required as per approvals & permission granted by the concerned authorities from time to time. Joint development with Surya Builders and Developers.



2 BHK
618 SQ.FT.



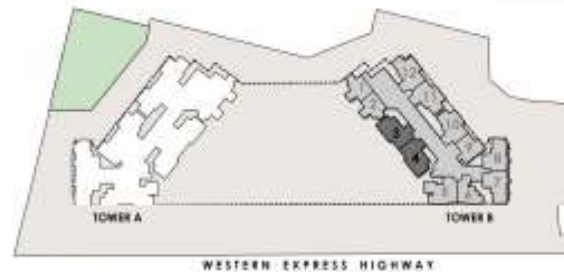
PLAN NOT TO SCALE

MahaRERA Registration No: P51800035093 Available on: <https://maharera.mahaonline.gov.in>

Disclaimer: The Furniture, Fixtures, Interior Work, Design options and Fittings as displayed in this communication are for showcasing purpose only and do not form part of standard amenities to be provided in the Flat/Premises. The Flat/Premises offered for Sale are unfurnished and the registered Agreement for Sale between the Promoter and the purchaser alone will be final and binding. The areas & dimensions shown herein are subject to a variation of +/- 3%. Promoter reserves its right to upgrade, modify, relocate, enhance, make changes, delete or alter the common amenities, refuge floor &/or height of the building and /or any features or as may be required as per approvals & permission granted by the concerned authorities from time to time. Joint development with Surya Builders and Developers.



2 BHK
624 SQ.FT.



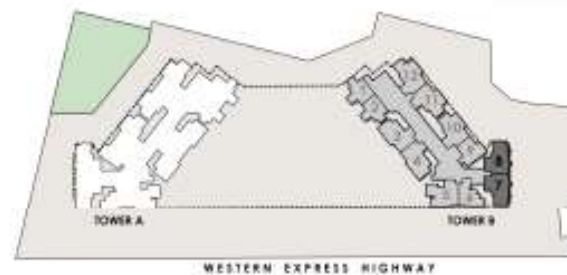
PLAN NOT TO SCALE

MahaRERA Registration No: P51800035093 Available on: <https://maharera.mahaonline.gov.in>

Disclaimer: The Furniture, Fixtures, Interior Work, Design options and Fittings as displayed in this communication are for showcasing purpose only and do not form part of standard amenities to be provided in the Flat/Premises. The Flat/Premises offered for Sale are unfurnished and the registered Agreement for Sale between the Promoter and the purchaser alone will be final and binding. The areas & dimensions shown herein are subject to a variation of +/- 3%. Promoter reserves its right to upgrade, modify, relocate, enhance, make changes, delete or alter the common amenities, refuge floor &/or height of the building and /or any features or as may be required as per approvals & permission granted by the concerned authorities from time to time. Joint development with Surya Builders and Developers.



2 BHK
650 SQ.FT.



PLAN NOT TO SCALE

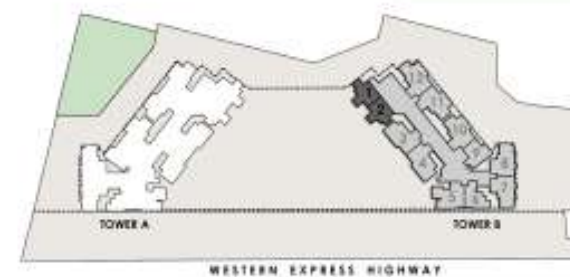
MahaRERA Registration No: P51800035093 Available on: <https://maharera.mahaonline.gov.in>

Disclaimer: The Furniture, Fixtures, Interior Work, Design options and Fittings as displayed in this communication are for showcasing purpose only and do not form part of standard amenities to be provided in the Flat/Premises. The Flat/Premises offered for Sale are unfurnished and the registered Agreement for Sale between the Promoter and the purchaser alone will be final and binding. The areas & dimensions shown herein are subject to a variation of +/- 3%. Promoter reserves its right to upgrade, modify, relocate, enhance, make changes, delete or alter the common amenities, refuge floor &/or height of the building and /or any features or as may be required as per approvals & permission granted by the concerned authorities from time to time. Joint development with Surya Builders and Developers.



3 BHK (SMART)

842 SQ.FT.



PLAN NOT TO SCALE

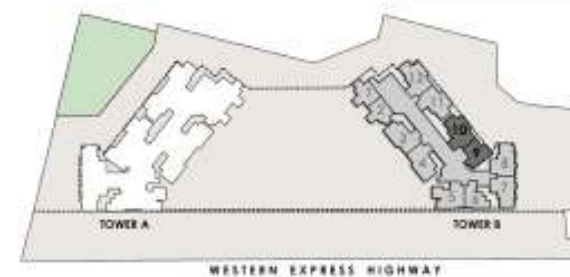
MahaRERA Registration No: P51800035093 Available on: <https://maharera.mahaonline.gov.in>

Disclaimer: The Furniture, Fixtures, Interior Work, Design options and Fittings as displayed in this communication are for showcasing purpose only and do not form part of standard amenities to be provided in the Flat/Premises. The Flat/Premises offered for Sale are unfurnished and the registered Agreement for Sale between the Promoter and the purchaser alone will be final and binding. The areas & dimensions shown herein are subject to a variation of +/- 3%. Promoter reserves its right to upgrade, modify, relocate, enhance, make changes, delete or alter the common amenities, refuge floor &/or height of the building and /or any features or as may be required as per approvals & permission granted by the concerned authorities from time to time. Joint development with Surya Builders and Developers.



3 BHK + STUDY

1059 SQ.FT.



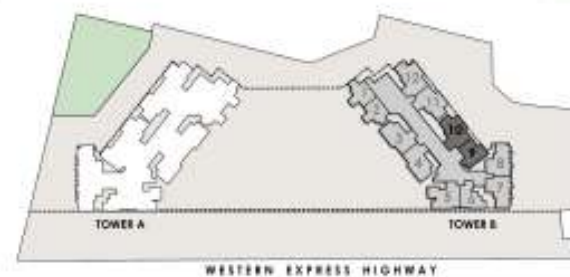
PLAN NOT TO SCALE

MahaRERA Registration No: P51800035093 Available on: <https://maharera.mahaonline.gov.in>

Disclaimer: The Furniture, Fixtures, Interior Work, Design options and Fittings as displayed in this communication are for showcasing purpose only and do not form part of standard amenities to be provided in the Flat/Premises. The Flat/Premises offered for Sale are unfurnished and the registered Agreement for Sale between the Promotor and the purchaser alone will be final and binding. The areas & dimensions shown herein are subject to a variation of +/- 3%. Promoter reserves its right to upgrade, modify, relocate, enhance, make changes, delete or alter the common amenities, refuge floor &/or height of the building and /or any features or as may be required as per approvals & permission granted by the concerned authorities from time to time. Joint development with Surya Builders and Developers.



3 BHK
1059 SQ.FT.



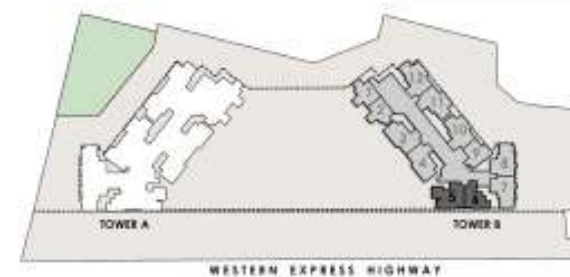
MahaRERA Registration No: P51800035093 Available on: <https://maharera.mahaonline.gov.in>

Disclaimer: The Furniture, Fixtures, Interior Work, Design options and Fittings as displayed in this communication are for showcasing purpose only and do not form part of standard amenities to be provided in the Flat/Premises. The Flat/Premises offered for Sale are unfurnished and the registered Agreement for Sale between the Promoter and the purchaser alone will be final and binding. The areas & dimensions shown herein are subject to a variation of +/- 3%. Promoter reserves its right to upgrade, modify, relocate, enhance, make changes, delete or alter the common amenities, refuge floor &/or height of the building and /or any features or as may be required as per approvals & permission granted by the concerned authorities from time to time. Joint development with Surya Builders and Developers.



3 BHK + STUDY

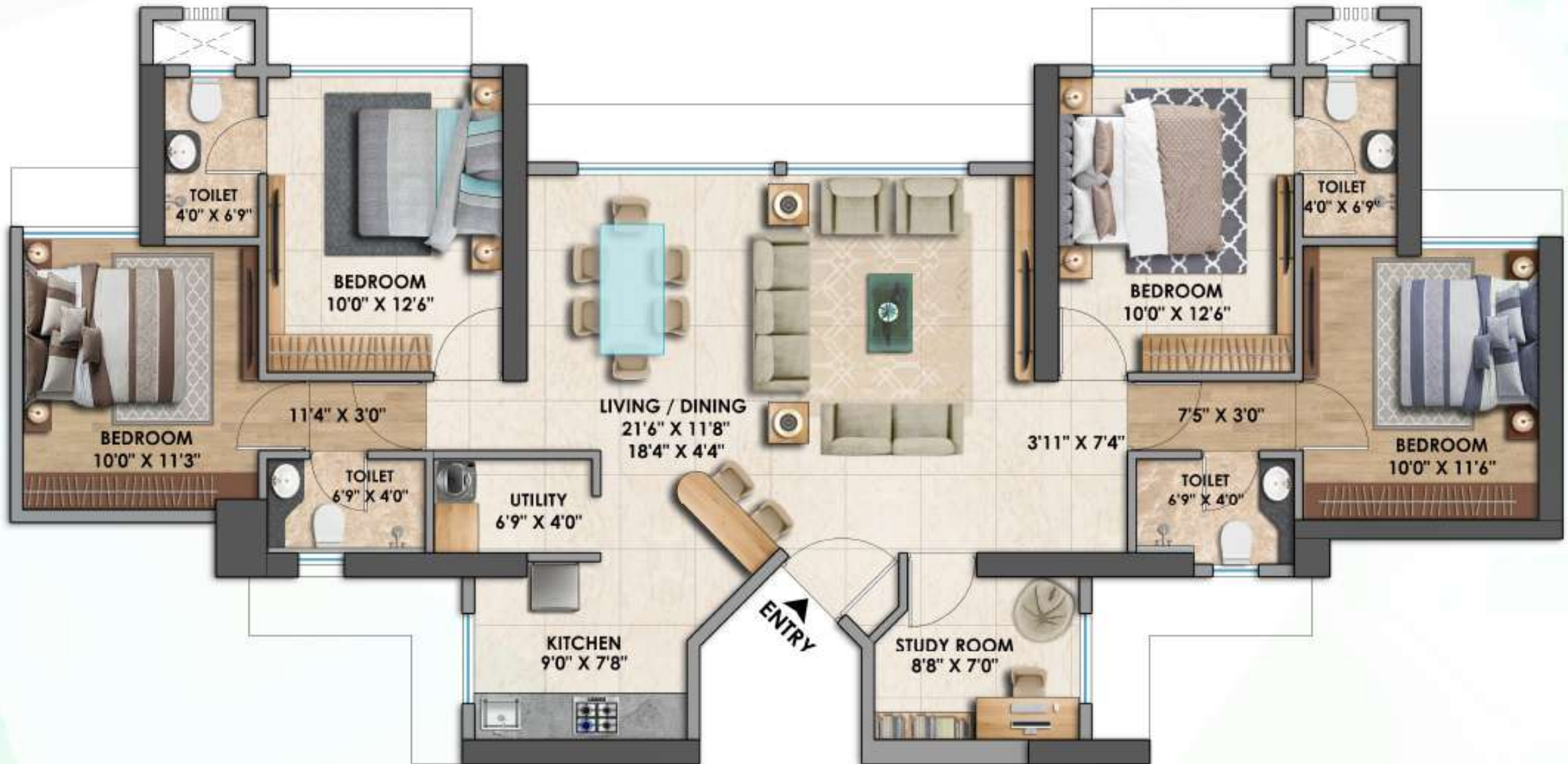
1071 SQ.FT.



PLAN NOT TO SCALE

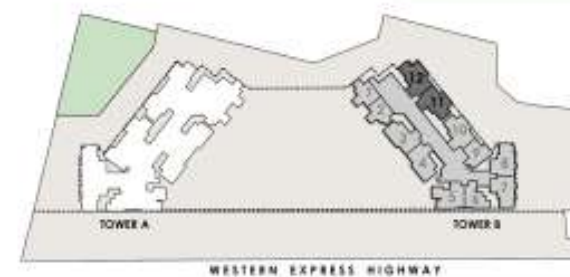
MahaRERA Registration No: P51800035093 Available on: <https://maharera.mahaonline.gov.in>

Disclaimer: The Furniture, Fixtures, Interior Work, Design options and Fittings as displayed in this communication are for showcasing purpose only and do not form part of standard amenities to be provided in the Flat/Premises. The Flat/Premises offered for Sale are unfurnished and the registered Agreement for Sale between the Promoter and the purchaser alone will be final and binding. The areas & dimensions shown herein are subject to a variation of +/- 3%. Promoter reserves its right to upgrade, modify, relocate, enhance, make changes, delete or alter the common amenities, refuge floor &/or height of the building and /or any features or as may be required as per approvals & permission granted by the concerned authorities from time to time. Joint development with Surya Builders and Developers.



4 BHK + STUDY

1242 SQ.FT.



PLAN NOT TO SCALE

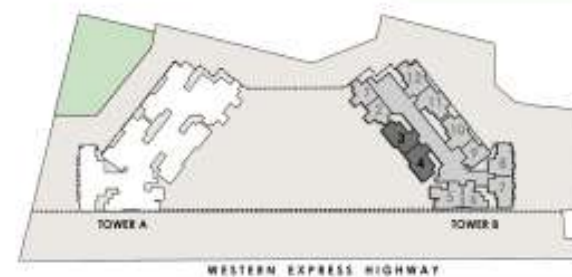
MahaRERA Registration No: P51800035093 Available on: <https://maharera.mahaonline.gov.in>

Disclaimer: The Furniture, Fixtures, Interior Work, Design options and Fittings as displayed in this communication are for showcasing purpose only and do not form part of standard amenities to be provided in the Flat/Premises. The Flat/Premises offered for Sale are unfurnished and the registered Agreement for Sale between the Promoter and the purchaser alone will be final and binding. The areas & dimensions shown herein are subject to a variation of +/- 3%. Promoter reserves its right to upgrade, modify, relocate, enhance, make changes, delete or alter the common amenities, refuge floor &/or height of the building and /or any features or as may be required as per approvals & permission granted by the concerned authorities from time to time. Joint development with Surya Builders and Developers.



4 BHK + STUDY

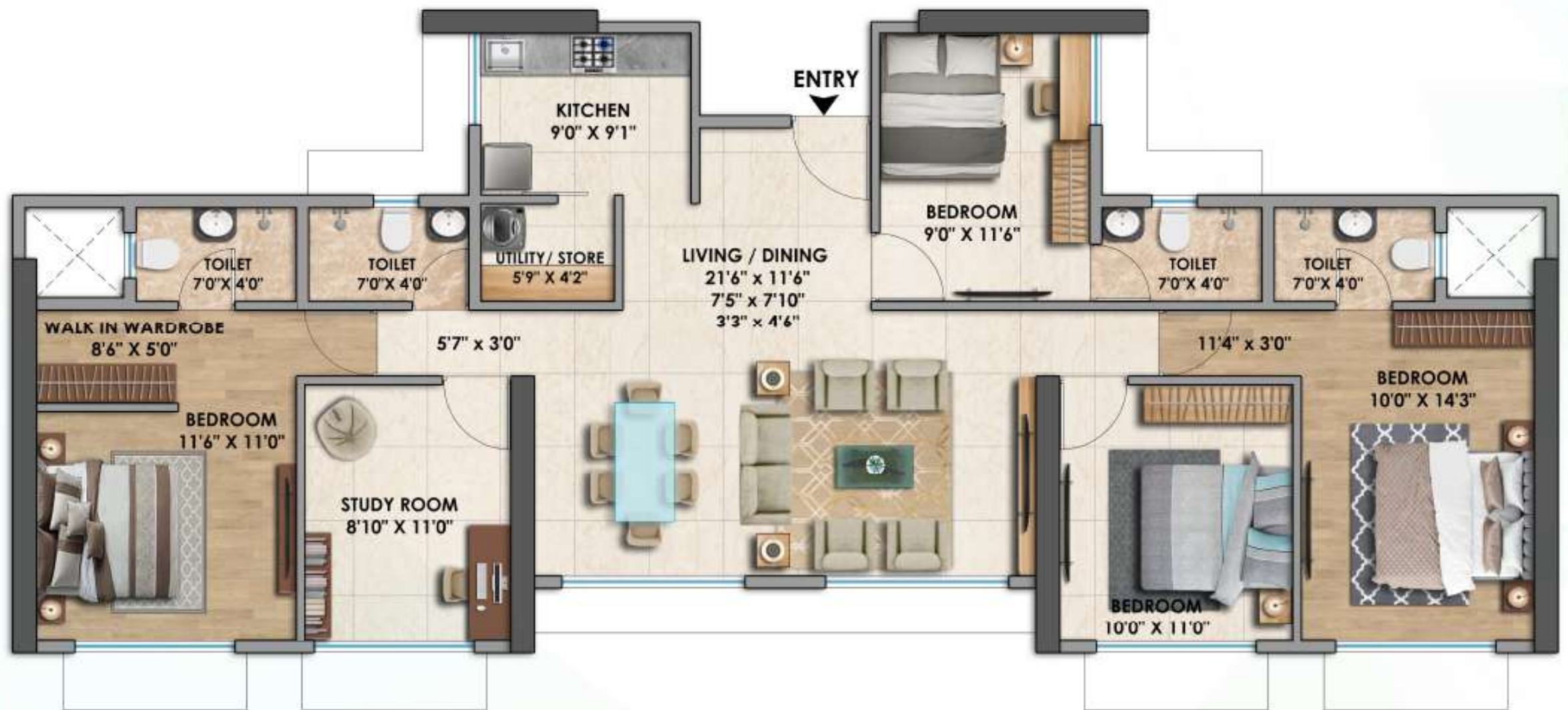
1256 SQ.FT.



PLAN NOT TO SCALE

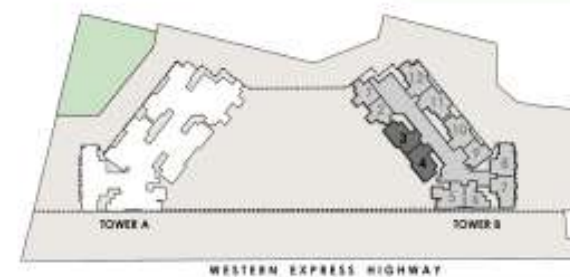
MahaRERA Registration No: P51800035093 Available on: <https://maharera.mahaonline.gov.in>

Disclaimer: The Furniture, Fixtures, Interior Work, Design options and Fittings as displayed in this communication are for showcasing purpose only and do not form part of standard amenities to be provided in the Flat/Premises. The Flat/Premises offered for Sale are unfurnished and the registered Agreement for Sale between the Promoter and the purchaser alone will be final and binding. The areas & dimensions shown herein are subject to a variation of +/- 3%. Promoter reserves its right to upgrade, modify, relocate, enhance, make changes, delete or alter the common amenities, refuge floor &/or height of the building and /or any features or as may be required as per approvals & permission granted by the concerned authorities from time to time. Joint development with Surya Builders and Developers.



4 BHK + STUDY

1256 SQ.FT.



PLAN NOT TO SCALE

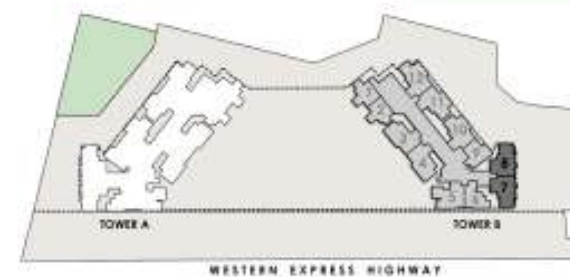
MahaRERA Registration No: P51800035093 Available on: <https://maharera.mahaonline.gov.in>

Disclaimer: The Furniture, Fixtures, Interior Work, Design options and Fittings as displayed in this communication are for showcasing purpose only and do not form part of standard amenities to be provided in the Flat/Premises. The Flat/Premises offered for Sale are unfurnished and the registered Agreement for Sale between the Promoter and the purchaser alone will be final and binding. The areas & dimensions shown herein are subject to a variation of +/- 3%. Promoter reserves its right to upgrade, modify, relocate, enhance, make changes, delete or alter the common amenities, refuge floor &/or height of the building and /or any features or as may be required as per approvals & permission granted by the concerned authorities from time to time. Joint development with Surya Builders and Developers.



4 BHK + STUDY

1307 SQ.FT.



PLAN NOT TO SCALE

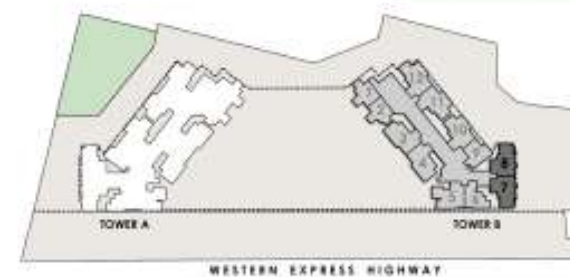
MahaRERA Registration No: P51800035093 Available on: <https://maharera.mahaonline.gov.in>

Disclaimer: The Furniture, Fixtures, Interior Work, Design options and Fittings as displayed in this communication are for showcasing purpose only and do not form part of standard amenities to be provided in the Flat/Premises. The Flat/Premises offered for Sale are unfurnished and the registered Agreement for Sale between the Promoter and the purchaser alone will be final and binding. The areas & dimensions shown herein are subject to a variation of +/- 3%. Promoter reserves its right to upgrade, modify, relocate, enhance, make changes, delete or alter the common amenities, refuge floor &/or height of the building and /or any features or as may be required as per approvals & permission granted by the concerned authorities from time to time. Joint development with Surya Builders and Developers.



4 BHK + STUDY

1307 SQ.FT.



PLAN NOT TO SCALE

MahaRERA Registration No: P51800035093 Available on: <https://maharera.mahaonline.gov.in>

Disclaimer: The Furniture, Fixtures, Interior Work, Design options and Fittings as displayed in this communication are for showcasing purpose only and do not form part of standard amenities to be provided in the Flat/Premises. The Flat/Premises offered for Sale are unfurnished and the registered Agreement for Sale between the Promoter and the purchaser alone will be final and binding. The areas & dimensions shown herein are subject to a variation of +/- 3%. Promoter reserves its right to upgrade, modify, relocate, enhance, make changes, delete or alter the common amenities, refuge floor &/or height of the building and /or any features or as may be required as per approvals & permission granted by the concerned authorities from time to time. Joint development with Surya Builders and Developers.