

PASSCODE  
**BLINK & MISS**





Artist's Impression

FROM THE CREATORS OF  
INDIA'S 7<sup>TH</sup> TALLEST SKYSCRAPER

AURIS SERENITY IS THE TALLEST AND LARGEST RESIDENTIAL ADDRESS IN MALAD,  
WITH BREATHTAKING SEA VIEWS AND THE PROMISE OF A MODERN,  
SERENE LIFESTYLE RIGHT IN THE HEART OF THE CITY'S BEAT.



TRANSCON IS A SUSTAINABILITY-FOCUSED DEVELOPER WITH A PROMINENT HISTORY OF DEVELOPING MODERN PROJECTS WITH GLOBAL STANDARDS. WITH A HISTORY OF FUTURISTIC PROPERTIES DOTTING SKYLINES ACROSS INDIA, THE BRAND COMBINES CREATIVE DESIGN WITH HONEST, FUNCTIONAL ENGINEERING TO BRING WORLD-CLASS SPACES TO INDIA.

SHETH CREATORS IS A LEADING REAL ESTATE COMPANY, SYNONYMOUS WITH BUILDING LUXURIOUS AND LANDMARK PROJECTS.

IN A RECORD SPAN OF 26 YEARS, THE GROUP HAS BEEN AT THE HELM OF 60 MIXED USE DEVELOPMENTS (COMPLETE AND ONGOING), 18000 HOMES AND HAVE DEVELOPED 20 MILLION SQUARE FEET RESIDENTIAL, COMMERCIAL AND RETAIL PROJECTS IN INDIA AND ABROAD.



Representative Image



Representative Image

## AWARD WINNING DEVELOPER WITH OVER 33 NATIONAL AND INTERNATIONAL AWARDS.

- Most Luxurious Residential Project of the Year - Auris Serenity The Rising Leadership Awards 2017
- Most Admired Ultra-Luxury Project – Residential Beaumonte The Rising Leadership Awards 2017
- Best Premium Apartments – People’s Choice Beaupride The Rising Leadership Awards 2017
- Best Intergrated Township of the Year - Vasant Oasis The Rising Leadership Awards 2017
- Developer of the Year – Residential Beaumonte CMO Asia Awards 2016
- Developer of the Year – Luxury Beaumonte CMO Asia Awards 2016
- Times Realty Icons Award Beaumonte 2016
- Most Admired Upcoming Project of the Year - Auris Serenity CMO Asia Awards 2016

*Presenting*

PASSCODE

**BLINK & MISS**

STYLISHLY DESIGNED CONTEMPORARY 1, 2 & 3 BED

RESIDENCES FOR MODERN LIVING.

HOME TO A HOST OF 35+ MODERN LIFESTYLE

INDULGENCES WITH AN UNRIVALLED LEVEL OF

CHOICE. LOCATED IN THE PRIME NEIGHBOURHOOD

OF MALAD WEST, IT OFFERS THE BEST OF

SUBURBAN MUMBAI WITHIN A SHORT DISTANCE.

WELCOME TO PEACEFUL HOMES, IN THE HEART OF

A FAST-PACED CITY, SURROUNDED WITH

EVERYTHING YOU NEED.





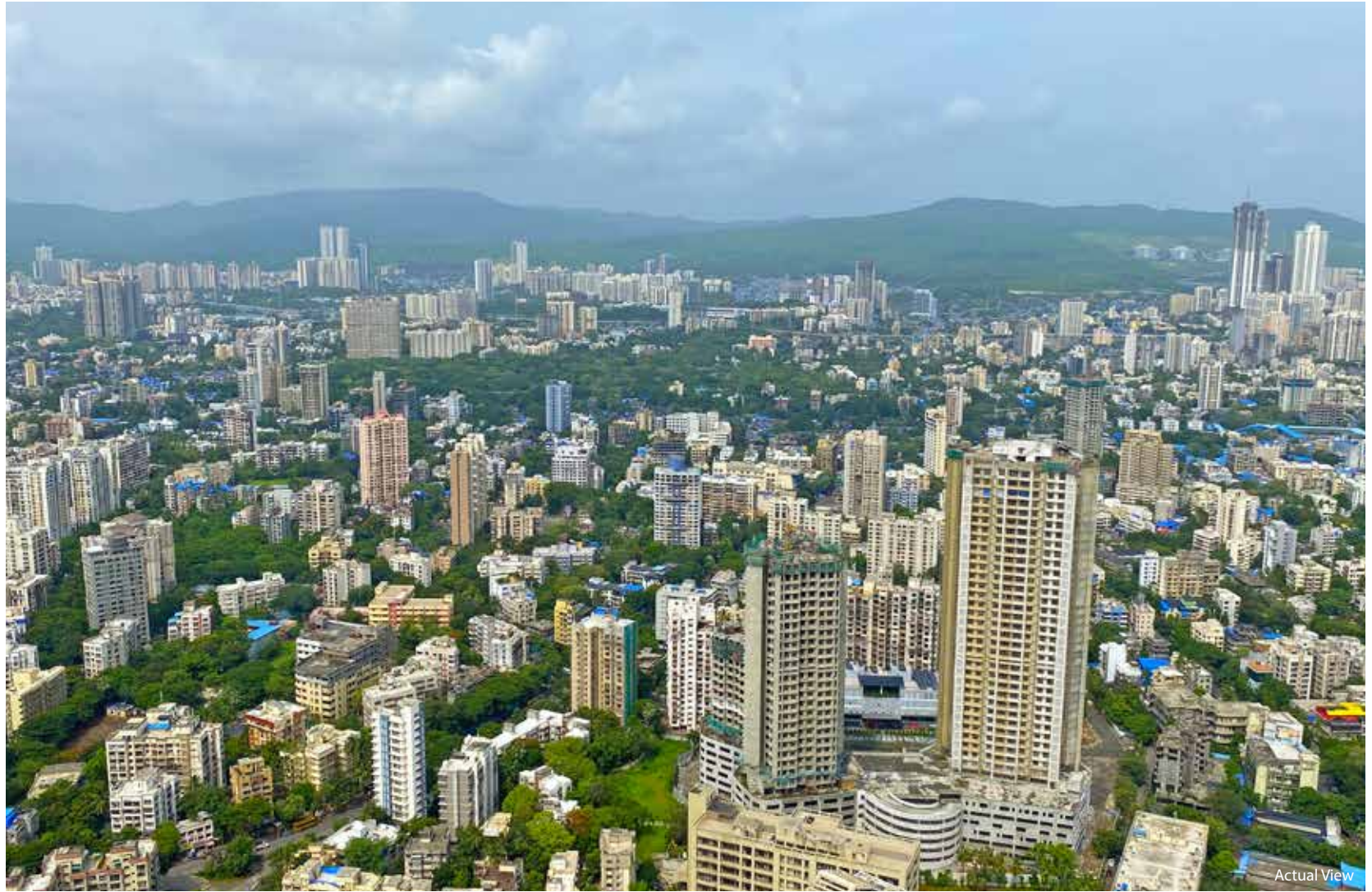
Artist's Impression



Representative Image

PASSCODE BLINK & MISS OFFERS BEAUTIFULLY PLANNED RESIDENCES, KEEPING IN MIND  
THE MODERN-DAY REQUIREMENTS OF A NEW-GENERATION FAMILY.

- EFFICIENTLY PLANNED HOMES
- MAXIMUM UTILIZATION OF SPACE
- 35+ LIFESTYLE EXPERIENCES
- STRATEGICALLY LOCATED IN THE HEART OF MUMBAI

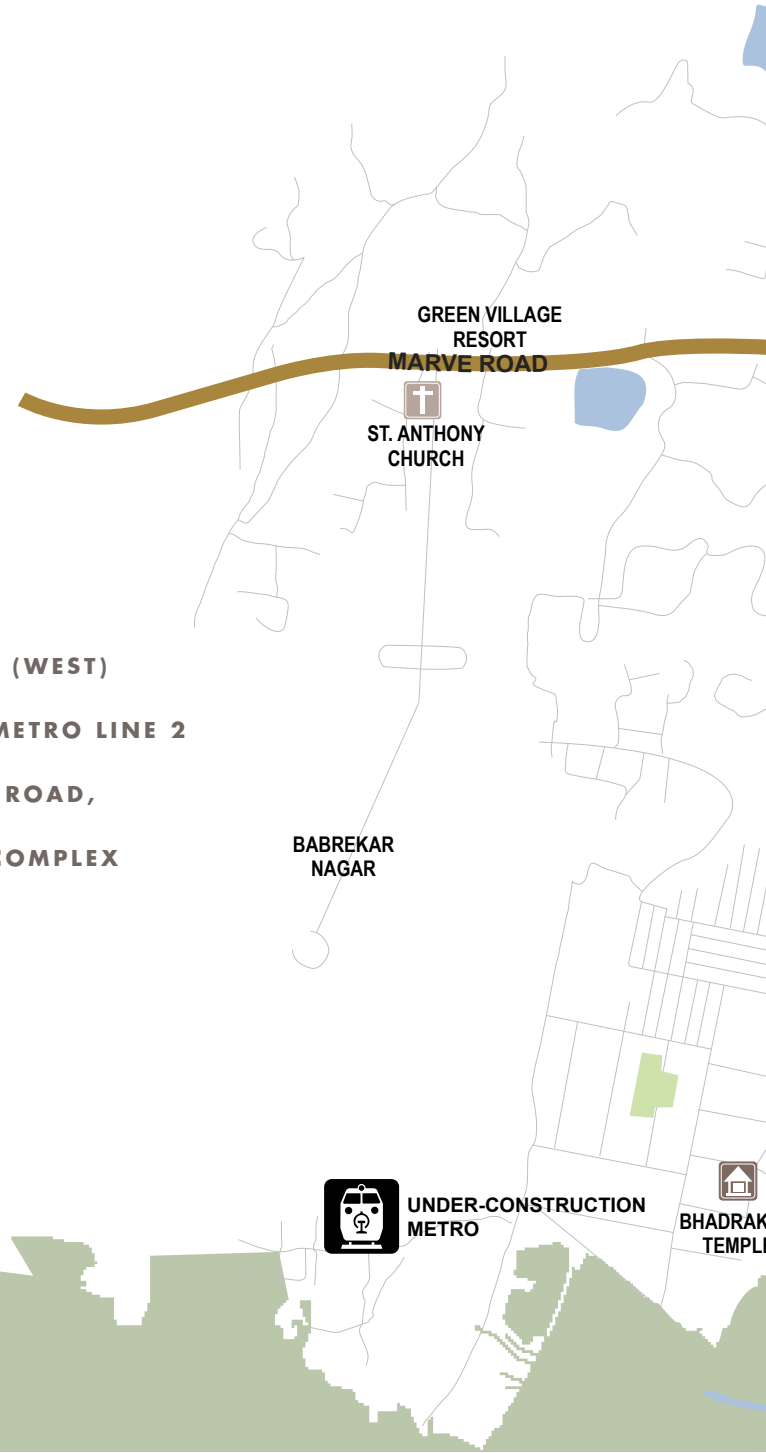


THE BEST OF MUMBAI,  
IN JUST A FEW MINUTES.

PASSCODE BLINK & MISS IS LOCATED IN THE PRIME NEIGHBOURHOOD OF MALAD WEST,  
A LOCALITY KNOWN FOR UNPARALLELED RETAIL AND ENTERTAINMENT OPPORTUNITIES.  
LOCATED WITHIN MINUTES OF MAJOR BUSINESS PARKS AND OFFICE COMPLEXES. THE PROJECT'S LOCATION  
ALLOWS ITS RESIDENTS TO ENJOY THE BEST OF BIG CITY LIVING, WITH NONE OF THE STRESS.

# LOCATION MAP

**PROPOSED COASTAL ROAD FROM MALAD (WEST)  
UNDER-CONSTRUCTION METRO STATION ON METRO LINE 2  
PROPOSED ROAD CONNECTING MARVE ROAD,  
MALAD WITH CHARKOP TOUCHING THE COMPLEX**



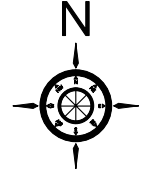


PASSCODE  
**BLINK & MISS**

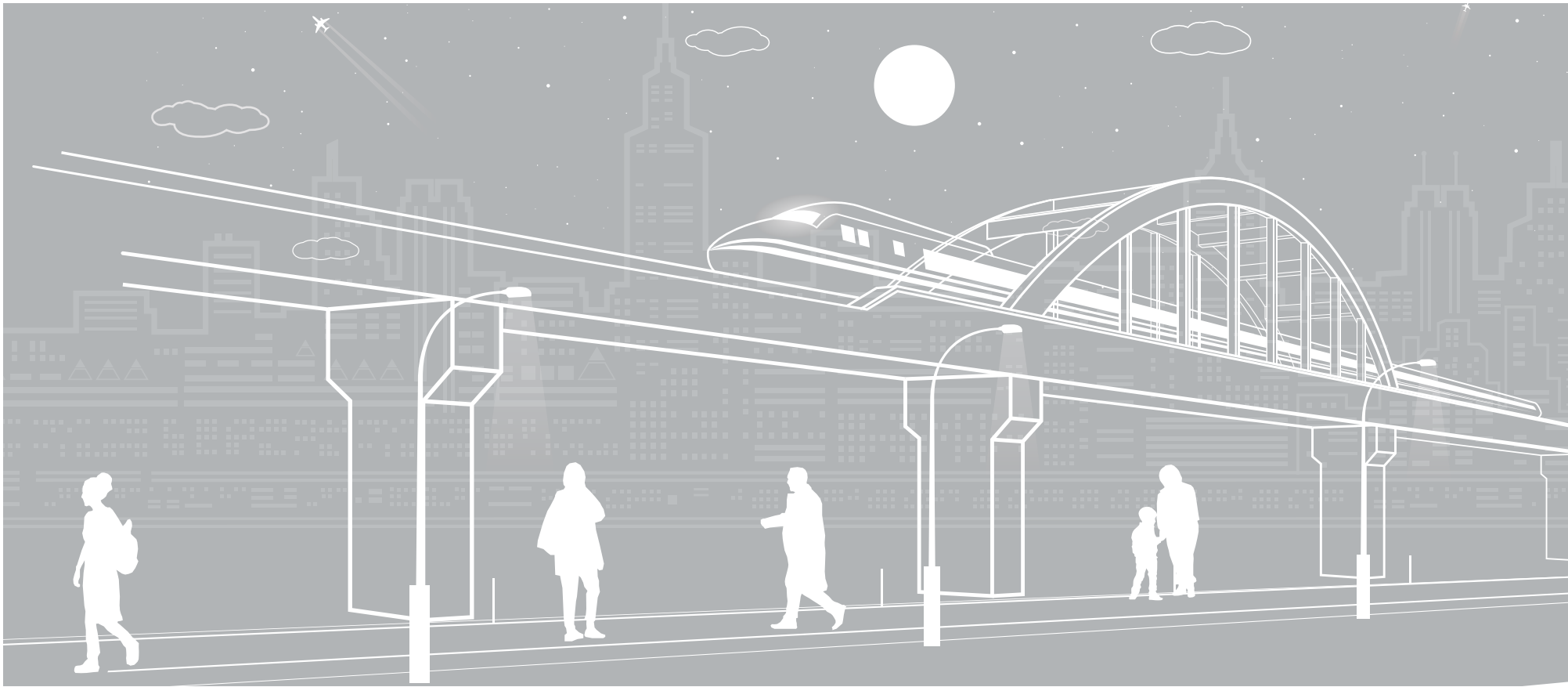
**AURIS  
SERENITY**

**AURIS  
BLISS**

**PROPOSED COASTAL ROAD**



NOT TO SCALE



## ■ CONNECTIVITY

WESTERN EXPRESS HIGHWAY - **6KM | 16 MIN**

KANDIVALI - **2KM | 12 MIN**

MALAD - **2KM | 9 MIN**

GOREGAON - **4KM | 17 MIN**

## ■ IN AND AROUND

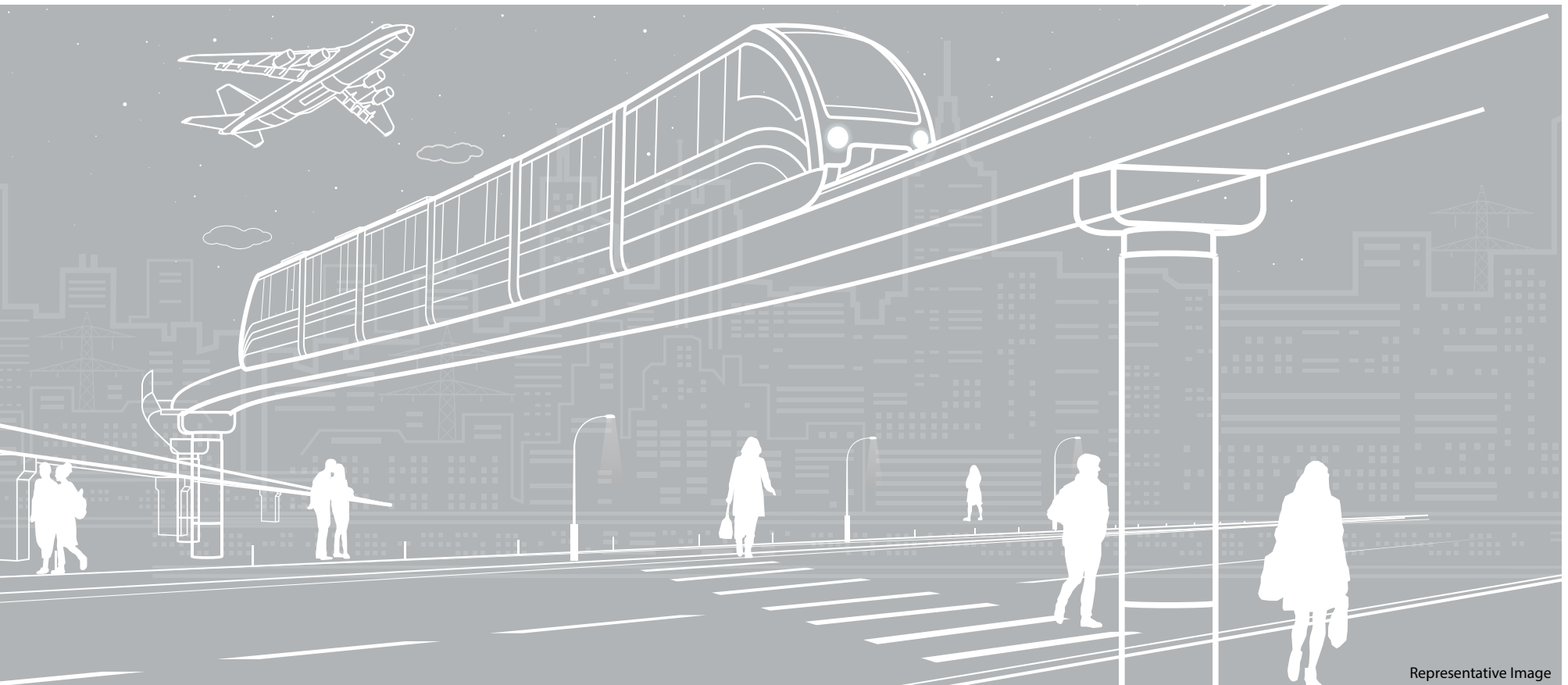
RAJIV GANDHI UDYAN PUBLIC PARK - **1.2KM | 5 MIN**

SIGREE GLOBAL GRILL - **1KM | 5 MIN** - UNCLE'S KITCHEN - **0.5KM | 3 MIN**

STACKS AND RACKS - **1.4KM | 6 MIN** | JOEY'S PIZZA - **1.8KM | 8 MIN**

LANDMARK RESTAURANT - **1KM | 4 MIN** | AKSA BEACH - **7.5KM | 23 MIN**





Representative Image

## ■ INFRASTRUCTURE

GOREGAON SPORTS CLUB - **1.3KM** | **6 MIN** | BMC Football Ground - **1KM** | **4 MIN**

INFINITI MALL - **1KM** | **5 MIN** | INORBIT MALL - **2.5KM** | **9 MIN** | EVERSHERE MALL - **1.6KM** | **7 MIN**

CARMEL OF ST. JOSEPH SCHOOL - **1KM** | **4 MIN** | RYAN INTERNATIONAL SCHOOL - **1KM** | **5 MIN**

OBEROI INTERNATIONAL SCHOOL - **6KM** | **17 MIN** | WITTY INTERNATIONAL SCHOOL - **2.6KM** | **10 MIN**



WELCOME TO NEXT-GENERATION LIVING.

EVERYTHING YOU WOULD EVER NEED,  
RIGHT AT HOME.

PASSCODE BLINK & MISS IS ONE OF THE FEW PROJECTS IN THE WESTERN SUBURBS TO

HOST MORE THAN 35 STATE-OF-THE-ART AMENITIES

AND A NEXT-GENERATION LIFESTYLE.

UNWIND, PLAY AND ESCAPE, RIGHT AT HOME.



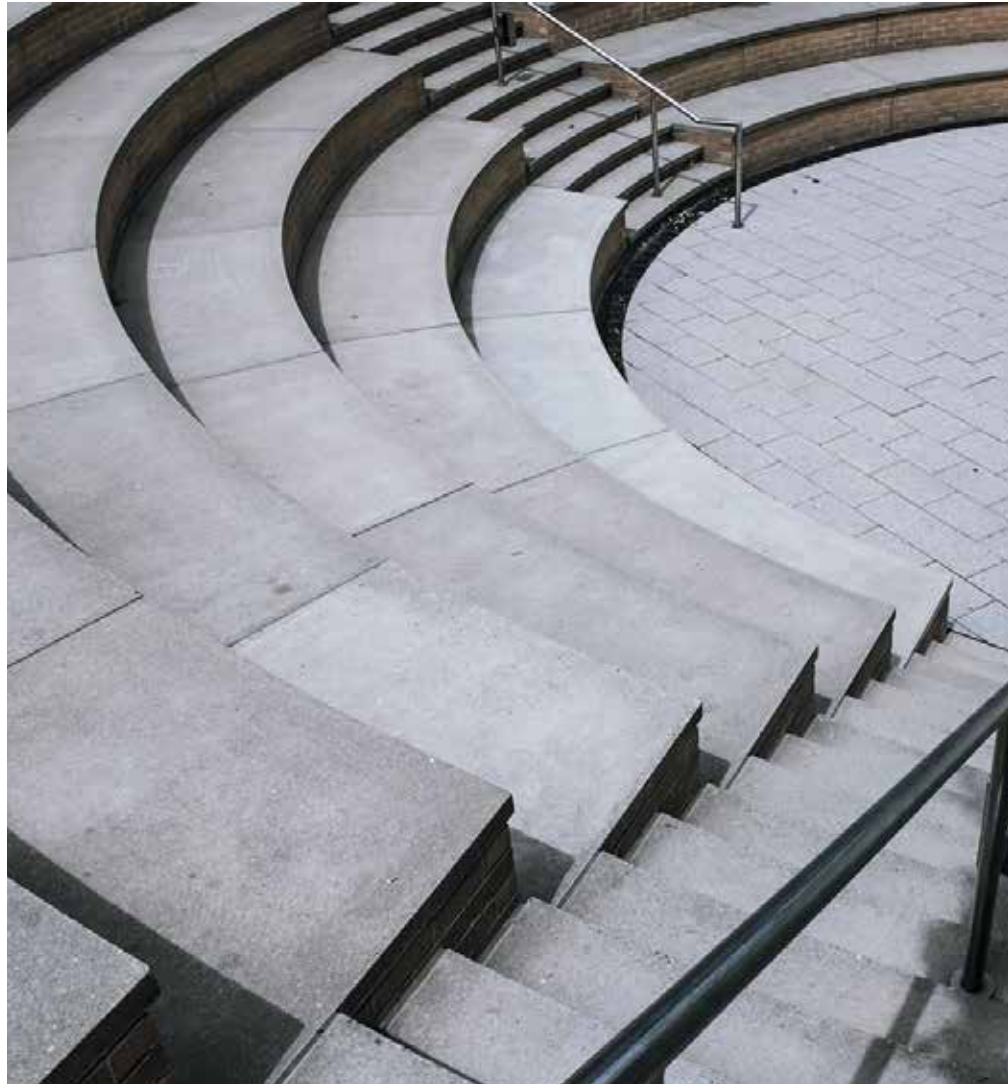
Representative Image



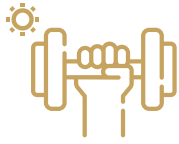
Representative Image



Representative Images



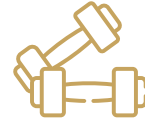




OUTDOOR FITNESS  
CORNER



JOGGING  
TRACK



GYM



ENTRANCE LOBBY



LOUNGE AND  
SEATING ZONE



TODDLERS  
PLAY AREA



GAMES  
ZONE



YOGA  
STUDIO



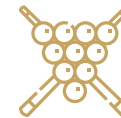
MEDITATION  
STUDIO



MULTI-PURPOSE  
AREA



FITNESS CENTRE  
(SEPARATE FOR EACH TOWER)



MULTI-GAMES  
ROOM



BANQUET



POOL CHANGING  
ROOMS



JACUZZI



OUTDOOR READING  
CORNER



SWIMMING  
POOL



OUTDOOR  
DINING AREA



ROCK  
CLIMBING WALL



REFLEXOLOGY  
AREA



SAND  
PIT



MULTIPURPOSE  
PLAY AREA



SENIOR CITIZENS  
CORNER



COVERED  
SEATING AREA



BOX  
CRICKET



SCULPTURE  
GARDEN



MOUND  
GARDEN



FLOWER  
POCKET/GARDEN



TREE  
GROVE



SKATING  
RINK



AROMA  
POCKET/GARDEN



Representative Images



Representative Image

# A FIRST IMPRESSION THAT LASTS.

CONTEMPORARY DESIGN AND LUXURIOUS FINISHING,

COME TOGETHER IN A GRAND ENTRANCE LOBBY

THAT WELCOMES BOTH GUESTS AND RESIDENTS

WITH AN AURA OF SPLENDOUR.

# A SPACE FOR THE YOUNG AT HEART.

POST-RETIREMENT BLISS LOOKS LIKE THIS.

A DEDICATED SPACE FOR YOU TO RELAX,

SPEND TIME WITH YOUR LOVED ONES OR SIMPLY HAVE FUN.



Representative Image

## OUR OTHER PROJECTS



AURIS SERENITY  
MALAD, LINK ROAD



AURIS BLISS  
MALAD WEST



AURIS GALLERIA (COMMERCIAL)  
MALAD, LINK ROAD



PLACE YOUR TRUST IN AWARD-WINNING DEVELOPERS  
WITH AN ESTABLISHED HISTORY OF BRINGING  
INDIA'S MOST AMBITIOUS PROJECTS TO LIGHT.

IDEAL LIVING STARTS HERE.

# COMPLEX LAYOUT



- LEGEND:**
1. LAP POOL AREA
  2. POOL STEPS
  3. KID'S POOL
  4. POOL CABANA
  5. BBQ AREA
  6. POOL LOUNGE
  7. OUTDOOR DINING AREA
  8. SEATING LOUNGE
  9. OPEN AMPHITHEATER
  10. PARTY LAWN
  11. FLOWER POCKET GARDEN
  12. TREE COURT
  13. YOGA STUDIO
  14. COVERED SEATING
  15. SKATING RINK
  16. ROCK CLIMBING WALL
  17. CHILDREN'S PLAY AREA
  18. SAND PIT
  19. TODDLER'S PLAY AREA
  20. SCULPTURE GARDEN
  21. TREE GROOVE SEATING
  22. GAMEZONE
  23. SENIOR CITIZEN'S CORNER WITH REFLEXOLOGY
  24. FITNESS AREA
  25. READING CORNER
  26. FITNESS CENTER
  27. SEATING PLAZA
  28. MEDITATION STUDIO
  29. CLUBHOUSE WITH ROOFTOP MULTI-PURPOSE COURT

N  
  
 Not to Scale



PASSCODE  
**BLINK & MISS**



---

Site Address: Sales Lounge, Next to Auris Serenity, Opp. Landmark Restaurant, Off Link Rd, Kanchpada, Malad West, Mumbai, Maharashtra 400064.

---

[www.blinkandmiss.in](http://www.blinkandmiss.in)

 MahaRERA Registration No. : P51800028533 | Also available on : <https://maharera.mahaonline.gov.in>.

Disclaimer: The plans, specification, elevation, conceptual designs, visuals, images, dimensions, photograph, furniture, fixtures, amenities, facilities, etc., are strictly provided for representation purpose only and are subject to requisite approvals from the competent authorities unless otherwise stated herein. This does not constitute an offer and/or contract of any nature between the company and the prospective purchaser/ customer has independently satisfied himself before any conclusive decision. All brand names and trademarks stands reserved. | Passcode Blink & Miss is used for marketing purpose only. \*T&CAppl.

