

A Project By

**ARIHANT**  
SUPERSTRUCTURES LTD.  
CONTINUING STABILITY

Project Financed by:



Architect:



Call.: 022 6857 2222 | [www.asl.net.in](http://www.asl.net.in)

Site Off.: Palasphe Phata, on Mumbai-Goa Road, Panvel.

Corporate Off.: Arihant Aura, Floor No. 25, Plot No 13/1 – TTC Industrial Area,  
Thane Belapur Road, Turbhe MIDC, Turbhe, Navi Mumbai, Maharashtra - 400 705.

Email: [sales@asl.net.in](mailto:sales@asl.net.in)

MAHARERA NO: P52000014107 Available on website : <https://maharera.mahaonline.gov.in>

 *A Lifestyle Project*

**ARIHANT**  
**ASPIRE**

PALASPE - PANVEL  
AN ORGANIC WORLD TO LIVE IN

MAHARERA NO: P52000014107

ORGANIC LAND.  
GREEN LANDSCAPES.  
NATURAL TERRAIN.  
REFRESHING SOUL.





**BREATHE PURE • EAT ORGANIC • LIVE HEALTHY**



**ARIHANT  
ASPIRE**  
PALASPE - PANVEL

**WELCOME TO THE 16-ACRE  
ORGANIC WORLD**

LAVISH STUDIO & 2 BHK APARTMENTS



# EXPERIENCE THE LANDMARK OF ORGANIC LIFESTYLE

Set Amidst A Well-Connected  
Location of Panvel

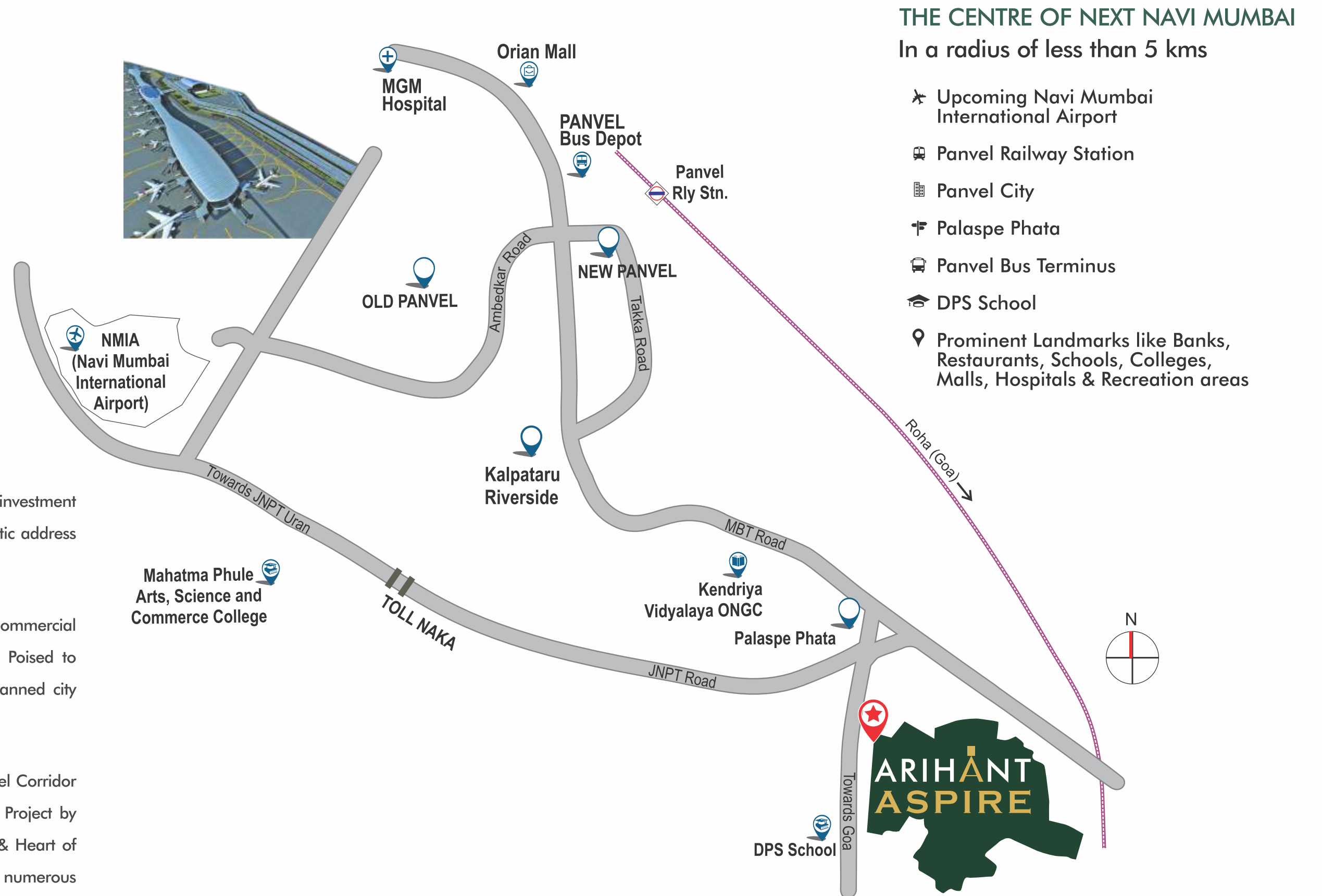
## PALASPE, PANVEL

THE CENTRE OF NEXT NAVI MUMBAI

Panvel, one of the top growing localities in Navi Mumbai offers brilliant real estate investment opportunities. Excellent connection by air, rail & road indeed makes Panvel the futuristic address for any real estate.

Soon to become the top spot in Navi Mumbai, it is a well-planned residential and commercial location offering cosmopolitan culture with hospitals, schools, colleges and market. Poised to become the future megacity after Mumbai and Navi Mumbai, it's a thoughtfully planned city with excellent civic amenities.

Palaspe in Panvel is a well-connected junction for all National Highways. A Multi-model Corridor it connects Mumbai-Pune Expressway by rail and road. As a part of the Smart City Project by CIDCO LD, it offers supreme conveniences by connecting JNPT, Pune & Goa Roads & Heart of NAINA (Navi Mumbai Airport Influence Notified Area), the new city which envelopes numerous Tourist, Sports & Hill Stations



# SCIENTIFICALLY PROVEN ADVANTAGES OF ORGANIC LIVING, ADDING MORE YEARS TO YOUR LIFE



ORGANIC FOOD & PRODUCTS  
IMPROVES THE VITAMIN  
DEFICIENCIES



ORGANIC FOOD PRODUCTS  
ARE MORE FRESH AND  
ORIGINAL IN TASTE



ORGANIC FOOD BOOSTS  
HEALTH & IMMUNITY



THE NUTRITIONAL VALUE OF  
ORGANIC FOOD IS SUPERIOR  
THAN OTHERS



**HARVEST THE MOMENTS  
OF HEALTH, EVERY DAY**



**ORGANIA**  
The Organic Garden

**LIFE IS BETTER  
BY THE POOLSIDE**

Best if it's Ozone Enriched



**OZONA**  
The Ozone Pool & Jacuzzi

**A BLISS OF REJUVENATION  
THERAPY A DAY**

Keeps the Stress & Worries Away



**OXY BLISS**

The Organic Spa, Steam & Sauna

**THE BEAUTY SECRET  
OF NATURE**



**NATURE'S NEST**

The Organic Beauty Store





# NUTRI MART

The Organic Food Shoppe

## NUTRI MART

AN ORGANIC FOOD SHOPPE



# THE ORGANIC FOOD SHOPPE

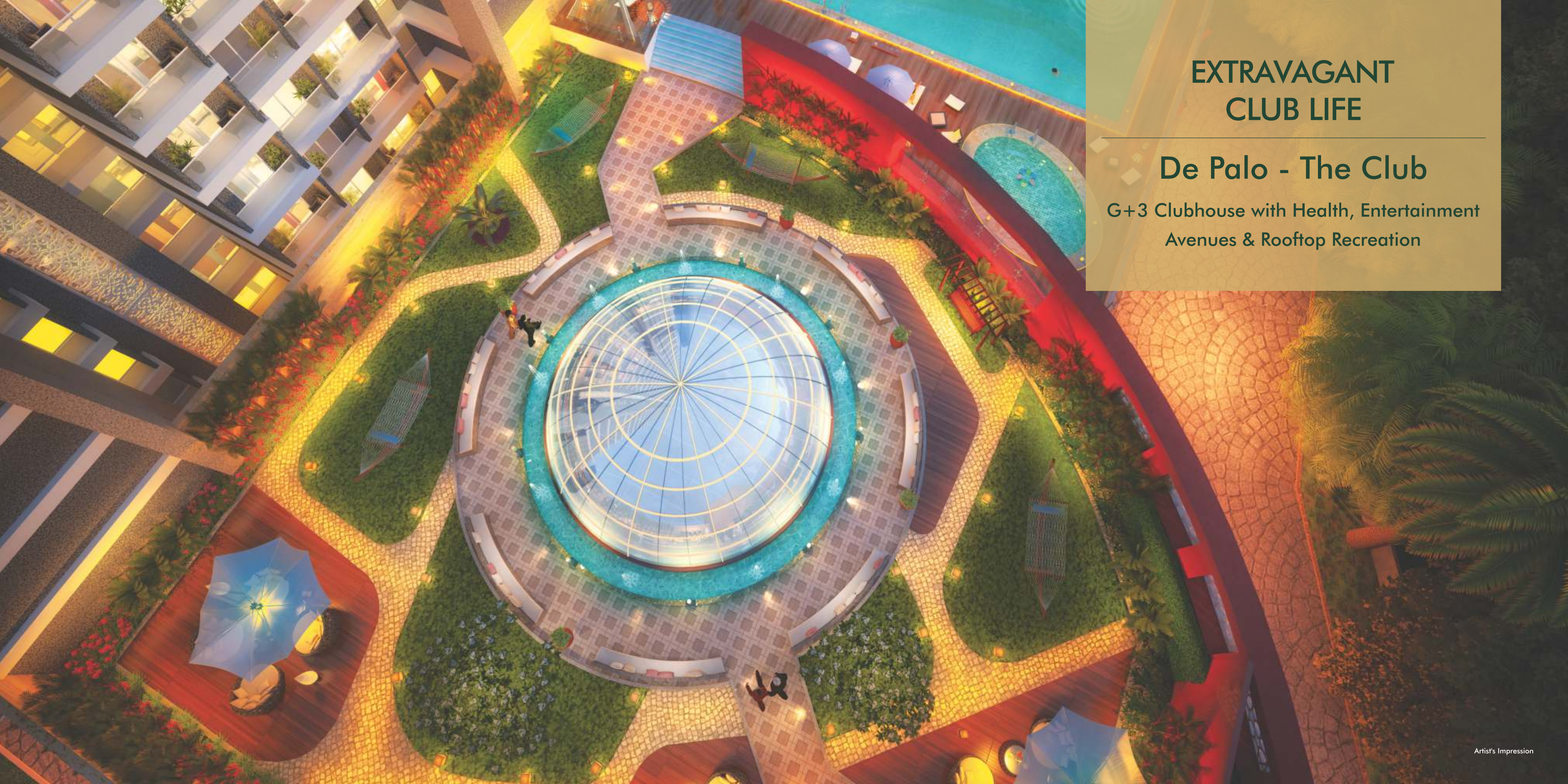


**SUPRA ORGANIC**

THE SALAD & JUICE BAR



**THE SALAD  
& JUICE BAR**



## EXTRAVAGANT CLUB LIFE

### De Palo - The Club

G+3 Clubhouse with Health, Entertainment  
Avenues & Rooftop Recreation



## MINI THEATRE

CUT YOUR BORING ROUTINE  
Say Action to Life

# OXY BLISS

TOUCH THE PURITY IN YOU  
Stay Your Best

# GRAND CLUBHOUSE LOBBY WITH LUXURY LOUNGE


CELEBRATIONS START WITH A  
GRAND WELCOME





## BANQUET HALL FOR FAMILY CELEBRATIONS

CHERISH THE BEST OF LOVE,  
LAUGHTER & JOY

A modern gym with people running on treadmills. The gym has large windows with blinds, wooden floors, and several treadmills. A man in a black shirt and shorts is running on the first treadmill. A woman in a purple sports bra and grey leggings is running on the second. A man in a green shirt and black pants is running on the third. A woman in a white sports bra and blue leggings is running on the fourth. The gym is bright and airy.

## GYMNASIUM WITH MODERN EQUIPMENT

TRAIN YOUR BODY,  
STRENGTHEN YOUR MUSCLES



Business Centre



Artist's Impression

Badminton

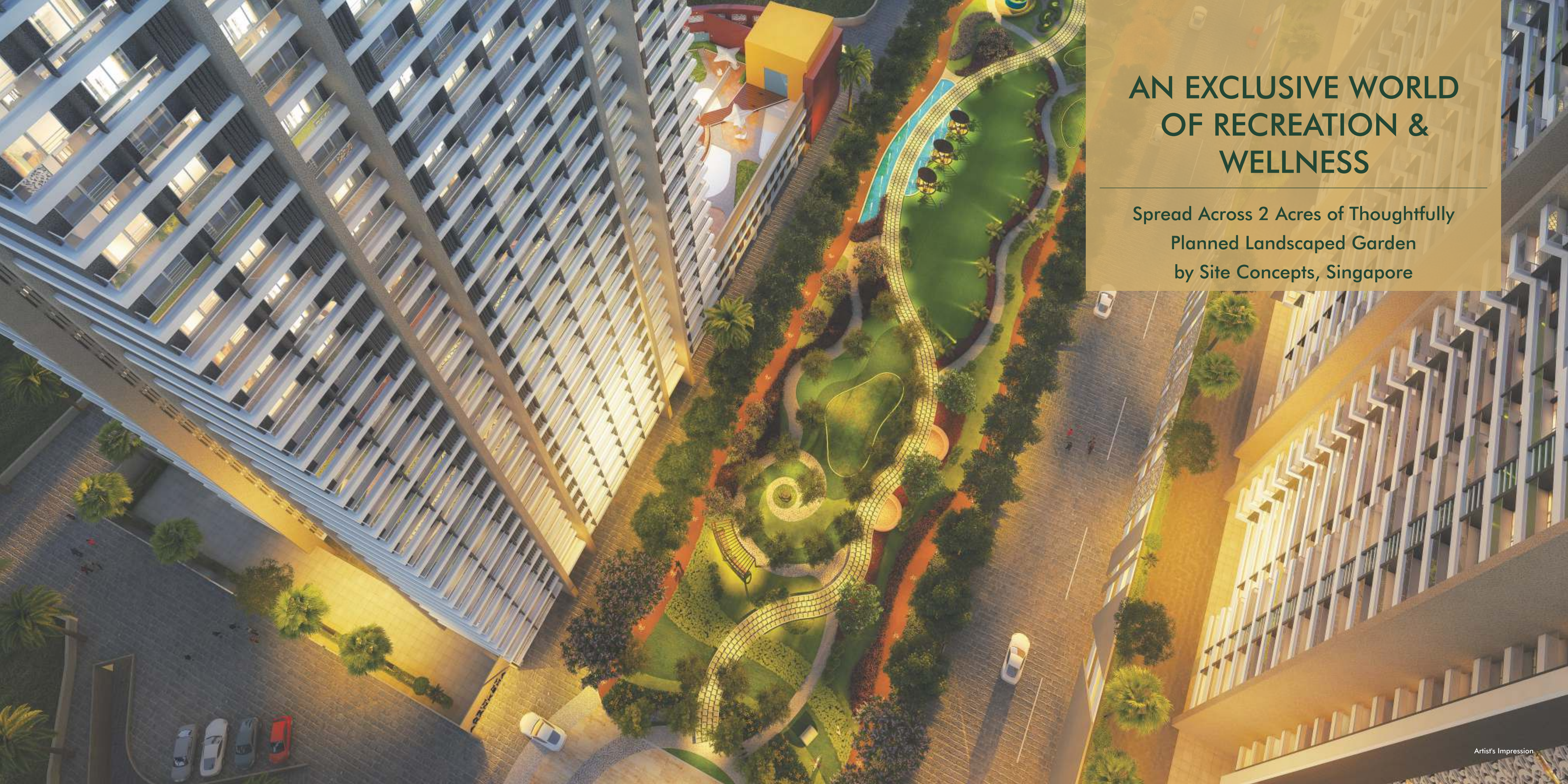


Cafeteria



Artist's Impression

Artist's Impression



# AN EXCLUSIVE WORLD OF RECREATION & WELLNESS

Spread Across 2 Acres of Thoughtfully  
Planned Landscaped Garden  
by Site Concepts, Singapore



## OPEN-AIR AMPHITHEATRE FOR ACTS & PERFORMANCES

A BIG PLATFORM TO  
SHOWCASE YOUR TALENT

Artist's Impression



## AN EXCLUSIVE SPACE FOR MANY OCCASIONS & REASONS

EXPANSIVE  
GREEN COURTYARDS

Artist's Impression

## KID'S PLAY AREA WITH PLAY EQUIPMENT

CHILDHOOD HERE IS  
INCREDIBLY DELIGHTFUL



Artist's Impression

## INNOVATIVE WI-FI PODS BESIDES WATER FOUNTAINS

STAY CONNECTED WITH  
WORK & PLEASURE



Artist's Impression



# A MAZE GARDEN FOR KIDS WITH TREE CANOPIES

A GREEN PUZZLE THAT  
LETS YOU STAY AMAZED



# PET GARDEN, JOGGING & CYCLING TRACK

FOR THE JOGGERS,  
THE CYCLERS & THE PET LOVERS



Actual Image

# DREAM FLAT

Where Lavishness Meets the Class

## Features & Embellishments

- Lavish Studio & 2 BHK Apartments
- Elegant Living Room with Vitrified Flooring
- Master Bedroom with bathtub
- Bathroom with Standard Sanitary Ware & Bathtub
- Video Door Phone in Every Apartment
- Moulded Panel Main Door & Bedroom Doors
- Granite Top Kitchen Platform with Full-height Tiles upto Beam Level
- Dedicated Space for Wash Basin & Washing Machine
- Luster or Velvet Touch Paint with POP in All Rooms
- Concealed Wiring with Ample Electrical Points & Modular Switches
- FRP Doors for Bathroom
- UPVC Windows

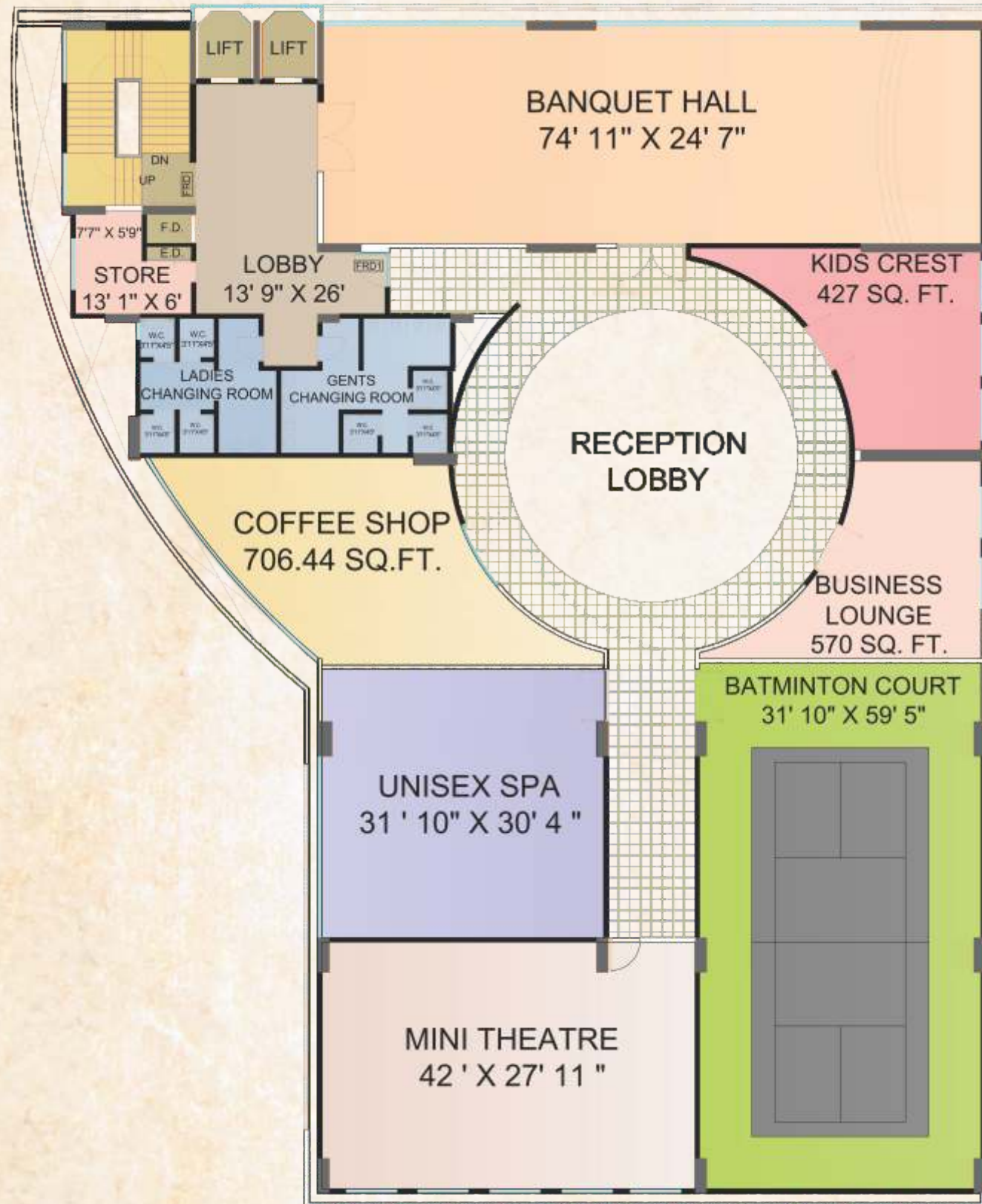


Actual Image

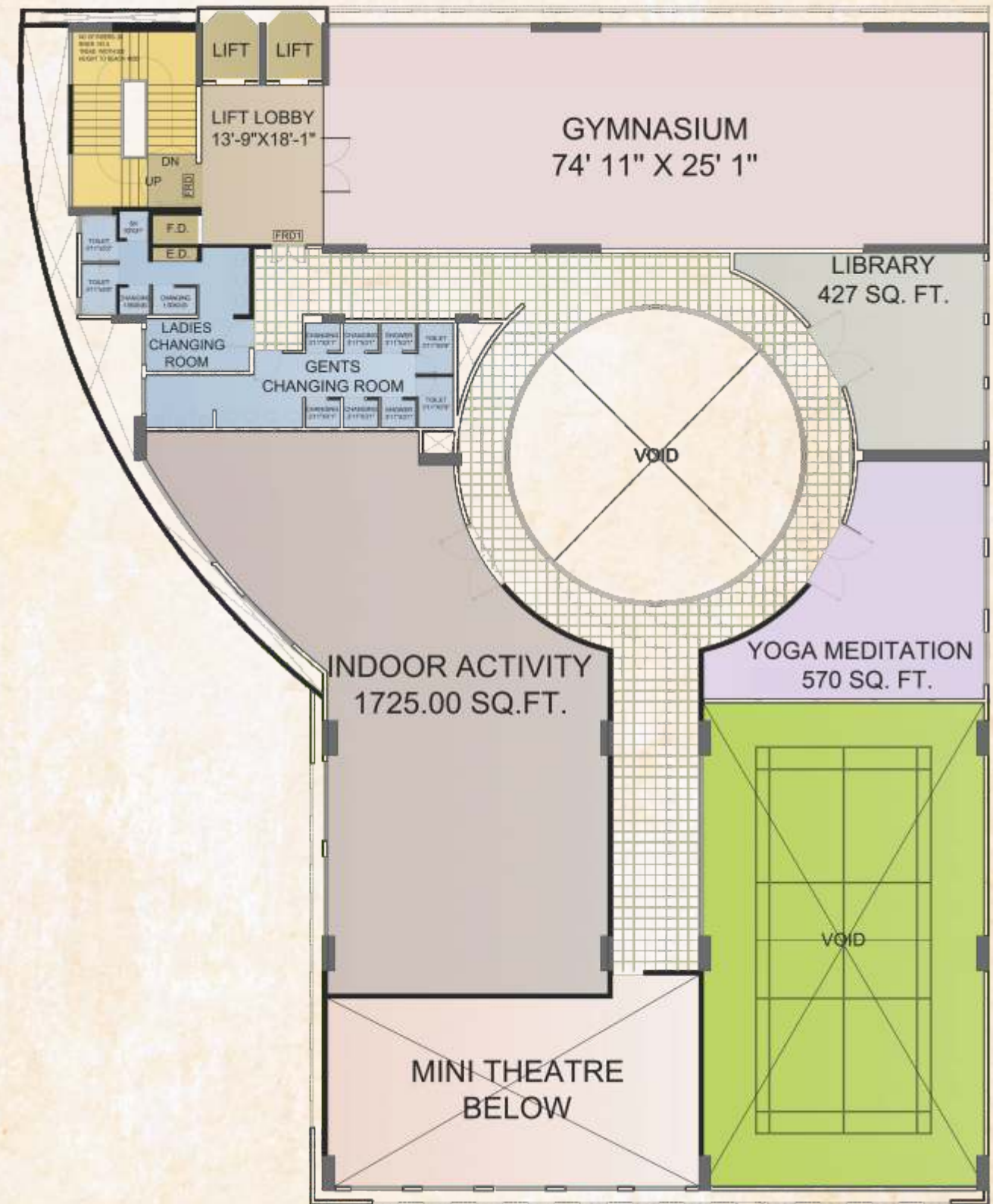


Actual Image

# CLUBHOUSE - 1<sup>ST</sup> FLOOR PLAN



# CLUBHOUSE - 2<sup>ND</sup> FLOOR PLAN

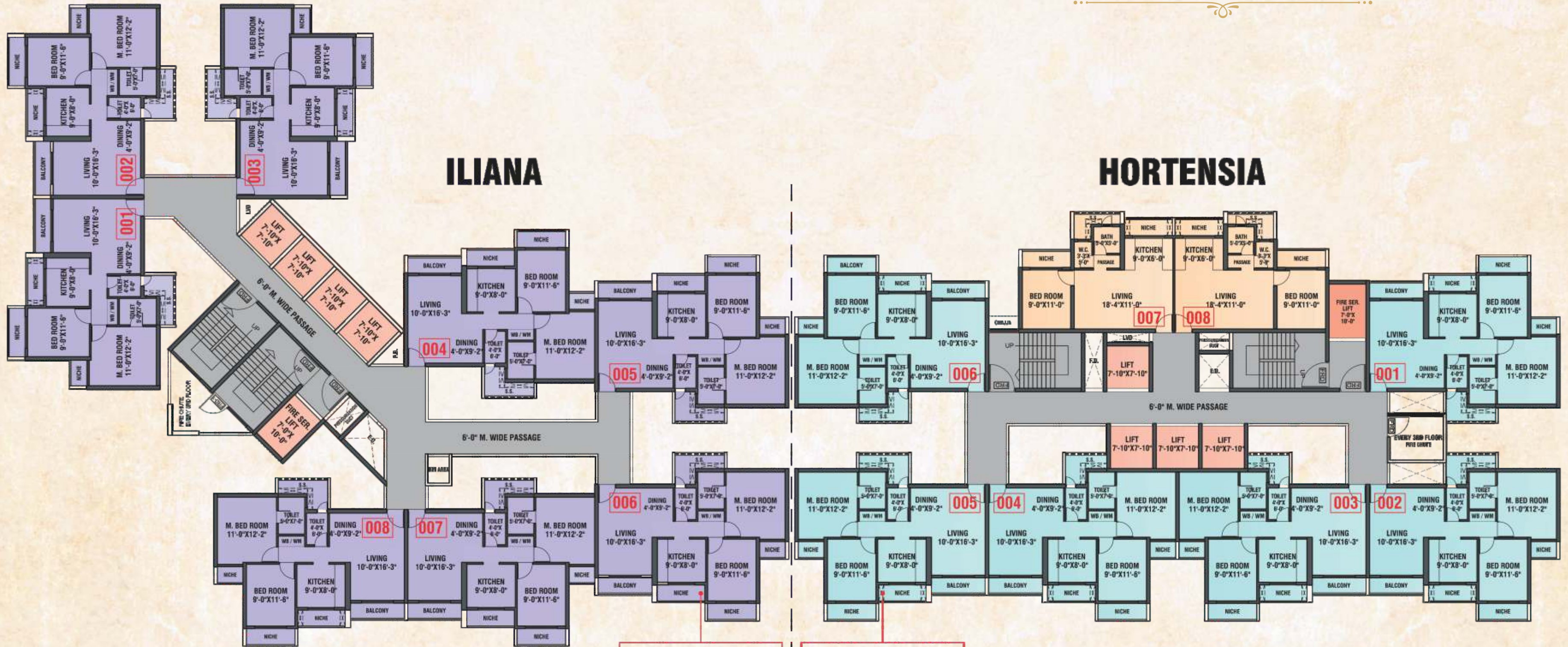




# LAYOUT PLAN



# TYPICAL FLOOR PLAN



## ILIANA

## HORTENSIA

REFUGE FLAT ON 7th, 11th, 15th, 19th, 23rd, 27th, 31st, 35th & 39th FLOOR WING - ILIANA

REFUGE FLAT ON 7th, 11th, 15th, 19th, 23rd, 27th, 31st, 35th & 39th FLOOR WING - HORTENSIA



# LAVISH STUDIO APARTMENT



# 2 BHK APARTMENT



.. ————— ..  
**OUR OTHER PROJECTS**  
.. ————— ..

**ARIHANT CLAN AALISHAN**

Kharghar Annex - 1050 Flats

MAHARERA REGISTRATION NO.: P52000017271

**ARIHANT AAROHI**

Kalyan - Shil Road - 258 Flats

MAHARERA REGISTRATION NO.: P51700004679

**ARIHANT ANMOL**

Badlapur (E) - 800 Flats

MAHARERA REGISTRATION NO.: P51700003112

**ARIHANT ARSHIYA**

Khopoli - Nr. Khalapur Toll Naka - 2000 Flats

MAHARERA REGISTRATION NO.: P52000003422

**ARIHANT AMISHA**

Taloja - Nr. Panvel - 650 Flats

MAHARERA REGISTRATION NO.: P52000008203

**ARIHANT ANSHULA**

Nr. Taloja Phase II, Navi Mumbai - 504 Flats

MAHARERA REGISTRATION NO.: P52000009246

**ARIHANT ANAIKA**

Nr. Taloja Phase II, Navi Mumbai - 1530 Flats

MAHARERA REGISTRATION NO.: P52000001869

**ARIHANT ALOKI**

Karjat (E), Nr Railway Station - 500 Flats

MAHARERA REGISTRATION NO.: P52000004014