

Inspired By Persian Architecture,  
Luxury Meets Contemporary Living.

 *A Lifestyle Project*

A Project by

**ARIHANT**  
SUPERSTRUCTURES LTD.  
CONTINUING STABILITY

**CLAN**  
+YOU

Call: 022 6857 2222 | [www.asl.net.in](http://www.asl.net.in)

MahaRERA REGISTRATION NO. P52000006391 & P52000017271 (<https://maharera.mahaonline.gov.in>)

Site Office: Behind Sector 35 & RAF, Near Proposed Metro Station, Kharghar, Navi Mumbai - 410 210.

Corporate Office: Arihant Aura, Floor No. 25, Plot No 13/1 - TTC Industrial Area, Thane Belapur Road, Turbhe MIDC,  
Turbhe, Navi Mumbai, Maharashtra - 400 705 . Tel: +91 22 6249 3333 | Email: [onlinesales@asl.net.in](mailto:onlinesales@asl.net.in)

Disclaimer: The brochure and its content(s) are only for advertisement purpose and should not be considered as a part of the agreement. The developer reserves the right to change, revise and make any modifications, additions, omissions and alterations in the scheme as a whole or any part thereof at their sole discretion.

ARIHANT CLAN  
**AALISHAN**  
PHASE - I  
A GRAND LIFE  
KHARGHAR ANNEXE

MahaRERA REGISTRATION NO. Phase I - P52000006391 | Phase II - P52000017271  
<https://maharera.mahaonline.gov.in>



# *A Lifestyle Project*

LIFESTYLE IS NOT A WORD;  
IT'S A SPACE WHERE SUPREMACY STAYS.  
AN ADDRESS OF THE NEXT.  
THE REFLECTION OF THE BEST.

PRESENTING

## *THE* Rising Star *OF* Supremacy

**Integrity**  
The Core Promise  
of Dependability and  
Professional Conduct

**Transparency**  
Highest Customer Satisfaction  
throughout the process

**Experience**  
Unique Themed Lifestyles

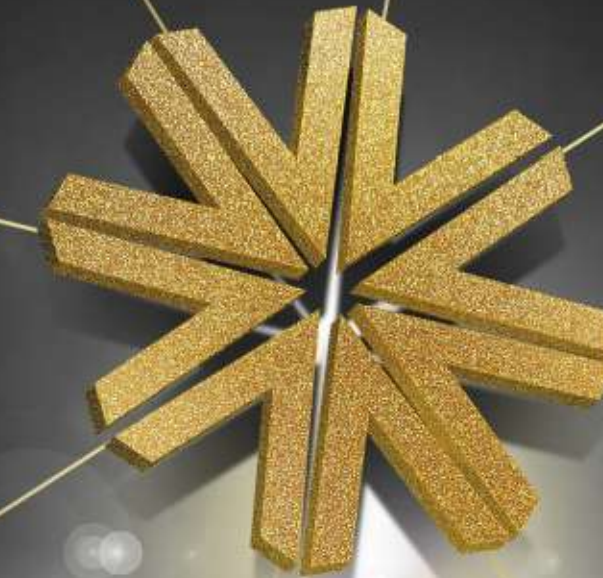
**Trust**  
The Credibility of a  
Progressive Listed Public Company

**Quality**  
Use of the New-age  
Construction Techniques such as MIVAN

**Luxury**  
Premium Finishes that are  
truly One-of-its-kind

**Pride**  
Ownership of an Address  
Reserved only for Select Few

**Lifestyle**  
Extraordinary Lifestyle Features  
for Extraordinary Experiences







AN INSPIRING WORLD DESIGNED  
TO GLORIFY YOUR TASTE.

*A Lifestyle Project*

Where grandeur opens the door to royalty, where significance raises the expectations. Where the world's iconic becomes your every day world.

Welcome to A Lifestyle Project that is comparable to none.

*A Lifestyle Project*



ARIHANT CLAN  
**AALISHAN**

PHASE - I  
A GRAND LIFE  
KHARGHAR ANNEXE



WELCOME TO AN ADDRESS  
INSPIRED BY PERSIAN ARCHITECTURE

Soon to become the tallest towers in Navi Mumbai.

PERSIAN-STYLE ARCHITECTURE INSTANTLY INVOKES AN IMAGE OF ROYALTY, LUXURY AND NOBILITY. MOST OF US DREAM TO LIVE AN ULTRAMODERN LIFESTYLE REplete WITH LUXURIES, BUT ONLY A FEW ACTUALLY OWN IT. PERSIAN-STYLE LIVING AT 'ARIHANT CLAN AALISHAN' IS SYMBOLIC TO THE ART OF UNPARALLELED LUXURY AT THE HEART OF ROYALTY. SITUATED NEAR KHARGHAR VALLEY GOLF COURSE, PROPOSED NAVI MUMBAI CORPORATE PARK & CENTRAL PARK, THE PROJECT FEATURES A HOST OF REGAL INDULGENCES INSPIRED BY THE GLORIOUS PERSIAN NOBILITY.

WELCOME TO A GRAND LIFE. THE AALISHAN LIFE.







Artist's Impression

✻ *A Lifestyle Project*

AIMING TO TOUCH NEW HEIGHTS  
AMIDST THE HIGH RISE STRUCTURES OF NAVI MUMBAI.

THE BEST OF  
HISTORICAL ROYALTY  
& CONTEMPORARY LUXURY

Comes together for a grand life.

ARIHANT CLAN  
**AALISHAN**

PHASE - I  
A GRAND LIFE  
KHARGHAR ANNEXE



— — — — —  
PERSIAN  
ARCHITECTURE,  
REGAL  
INDULGENCES,

And a life that recreates majestic living.



PROJECT HALLMARKS

BIG SIZED STUDIO, 1, 2 & 3 BHK RESIDENCES

BARAZ 1 & 2 - 53 STOREY TOWERS | KAVEH - 37 STOREY TOWER

ZEENAT - 51 STOREY TOWER

DOUBLE-HEIGHT ENTRANCE LOBBY INSPIRED BY PERSIAN ARCHITECTURE

PROPOSED SUPERMARKET WITHIN THE PREMISES



DISCOVER  
A HOST OF ROYAL  
INDULGENCES

Inspired by the glorious persian nobility.

 *A Lifestyle Project*



**AAYAT**  
ENTRANCE  
LOBBY



**KOLUP**  
GRAND  
CLUBHOUSE



**HAMMAM SPA**  
SPA WITH JACUZZI,  
STEAM AND SAUNA



**SUFIYANA**  
LOUNGE & CAFE  
IN CLUBHOUSE



**JAZLAAN**  
MINI  
THEATRE



**PAIRI DAEZA**  
LANDSCAPED GARDEN  
& SIT-OUTS



A GRAND ADDRESS  
TAKING SHAPE AMIDST  
NAVI MUMBAI'S  
GRAND LANDMARKS.



LOCATION ADVANTAGES

- UPCOMING NAVI MUMBAI INTERNATIONAL AIRPORT - 15 Mins.
- PROPOSED NAVI MUMBAI CORPORATE PARK - 5 Mins.
- KHARGHAR VALLEY GOLF COURSE - 7 Mins.
- UPCOMING SECTOR 35 METRO STATION - 2 Mins.
- VERY NEAR TO CENTRAL PARK - 6 Mins.







 *A Lifestyle Project*

 **A PRIME LOCATION  
AMIDST THE  
MARVEL OF NATURE.**







LIFE IS A JOURNEY  
TOWARDS HAPPINESS.  
LET'S ENJOY  
EVERY MOMENT.

CLUB LIFE EXPERIENCES  
WITH INDULGENCES APLENTY

✻ *A Lifestyle Project*



AAYAT - ROYAL ENTRANCE LOBBY





KOLUP - ROYAL GRAND CLUBHOUSE





## HAMMAM - ROYAL SPA



INHALE THE HAPPINESS,  
EXHALE THE STRESS AND  
LET THE REJUVENATION BEGIN.



RECREATION AND  
REJUVENATION FEATURES

SPA WITH JACUZZI,  
STEAM AND SAUNA



SUFIYANA - ROYAL LOUNGE & CAFÉ





JAZLAAN - ROYAL MINI THEATRE



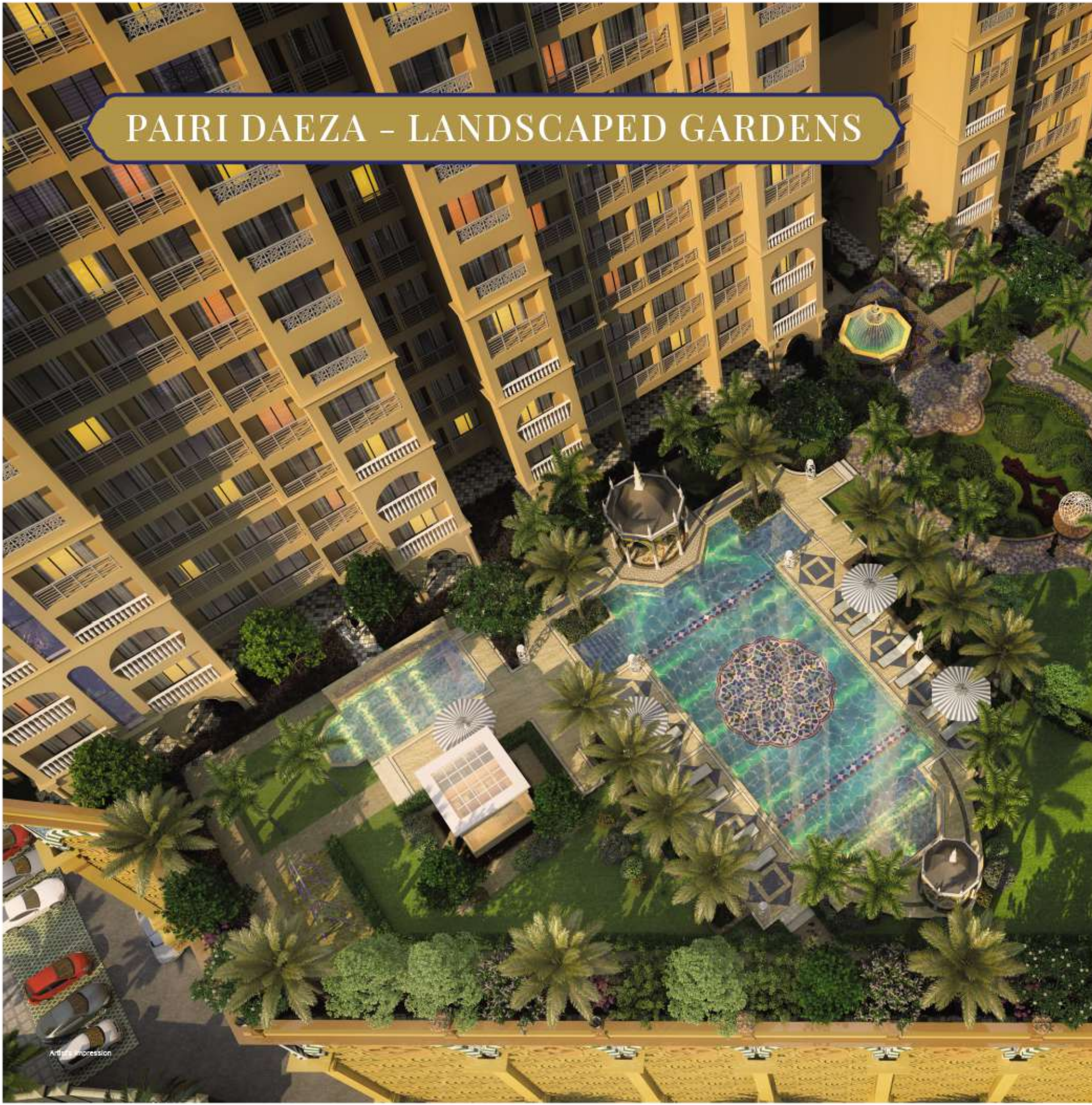
WHERE THE SILVER  
SCREEN COMES CLOSER  
TO YOUR APPLAUSE.



ENTERTAINMENT CENTRE



# PAIRI DAEZA - LANDSCAPED GARDENS



EXPERIENCE NATURE,  
STAY CLOSE TO LIFE,  
AND INTRODUCE  
YOURSELF TO THE NEW YOU.





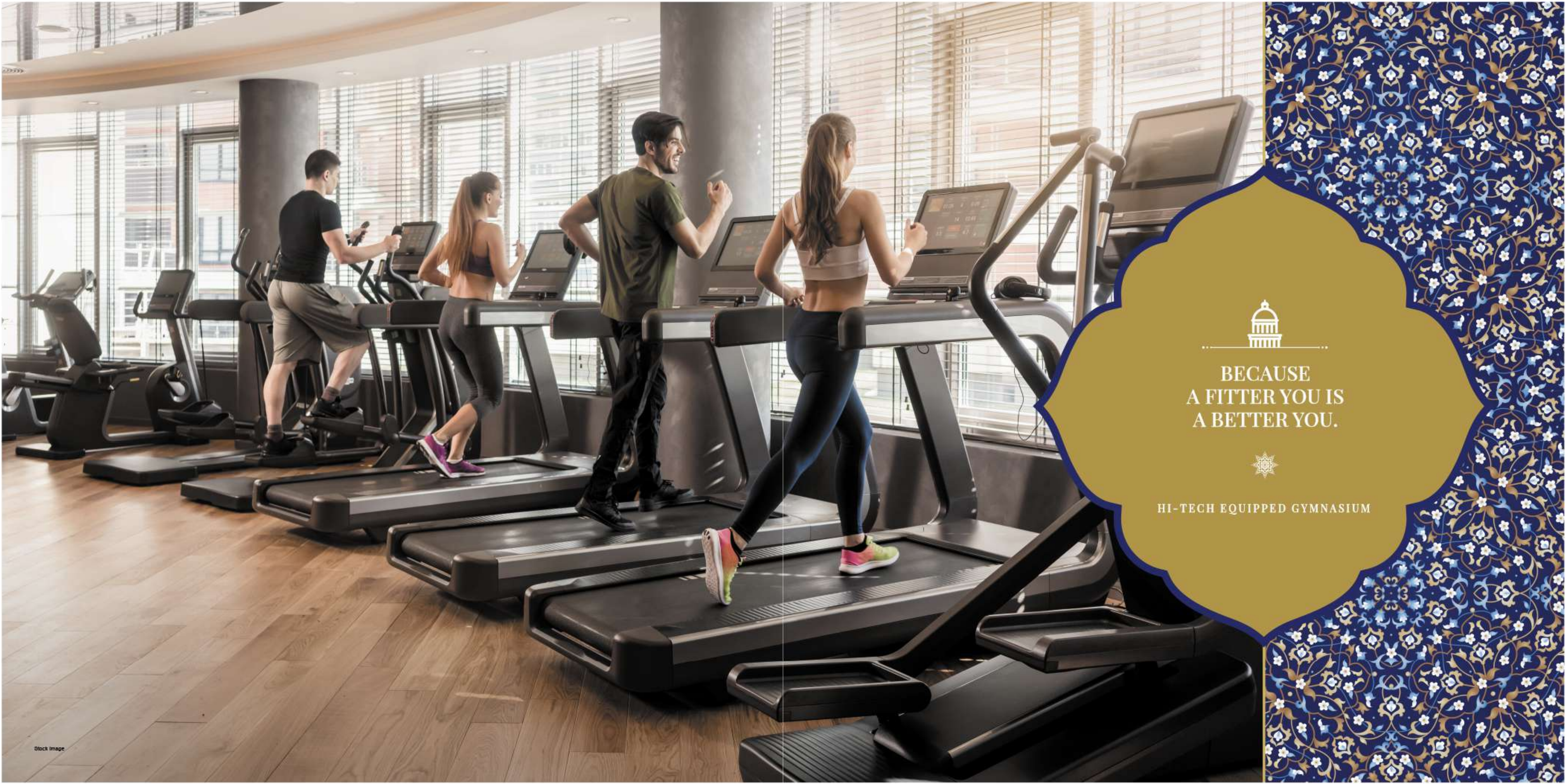


EXPERIENCE  
AN AZURE WORLD OF  
REGAL PROPORTIONS.



FULL-SIZE SWIMMING POOL



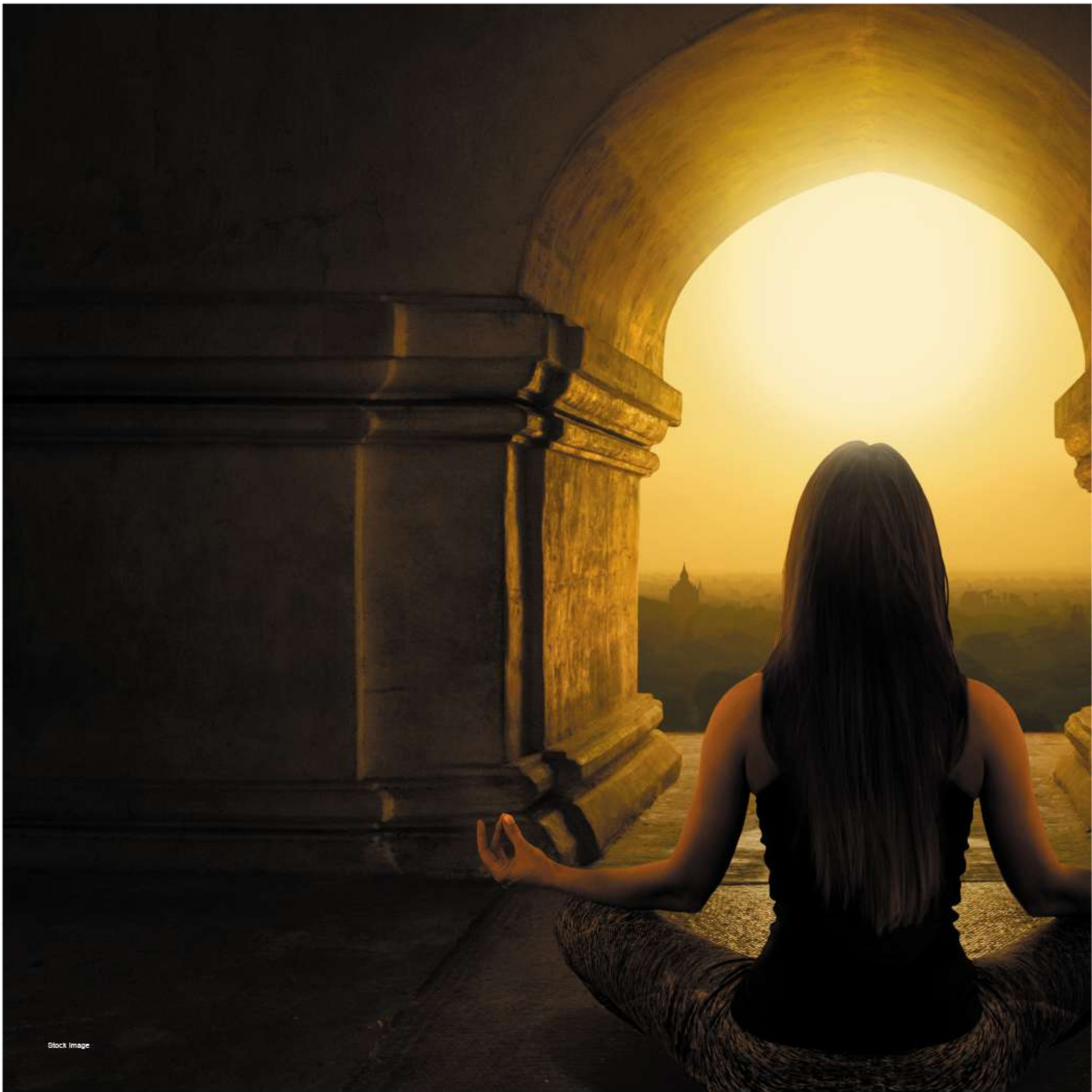


BECAUSE  
A FITTER YOU IS  
A BETTER YOU.



HI-TECH EQUIPPED GYMNASIUM





Stock Image

.....  
  
.....

WHEN IT'S TIME  
TO BE ONE WITH YOUR  
INNER SELF.



YOGA AND MEDITATION  
CENTRE





IF YOU ARE GAME?  
THEN WE GOT IT ALL.



MULTIPURPOSE PLAY COURTS FOR  
BADMINTON & SQUASH

INDOOR SPORTS CLUB





EACH DAY BRINGS  
MANY SURPRISES.  
HERE WE MAKE THEM  
AWE-INSPIRING.



RAIN DANCE ARENA  
WITH WATER FOUNTAIN





EXPERIENCE  
THE GRANDNESS OF  
PERSIAN LIFESTYLE WITH  
MODERN AMENITIES.

LUXURIOUS APARTMENT  
& TOWER FEATURES

✻ *A Lifestyle Project*





A GRAND LIFE OF  
ROYAL EXPERIENCES AND  
ULTRAMODERN LUXURIES  
WELCOME YOU.



LUXURIOUS ROYAL APARTMENT





ACTUAL PHOTOGRAPH



AN EXPERIENCE  
THAT REDEFINES  
THE ART OF ELEGANCE.

ROYAL BATHING EXPERIENCE



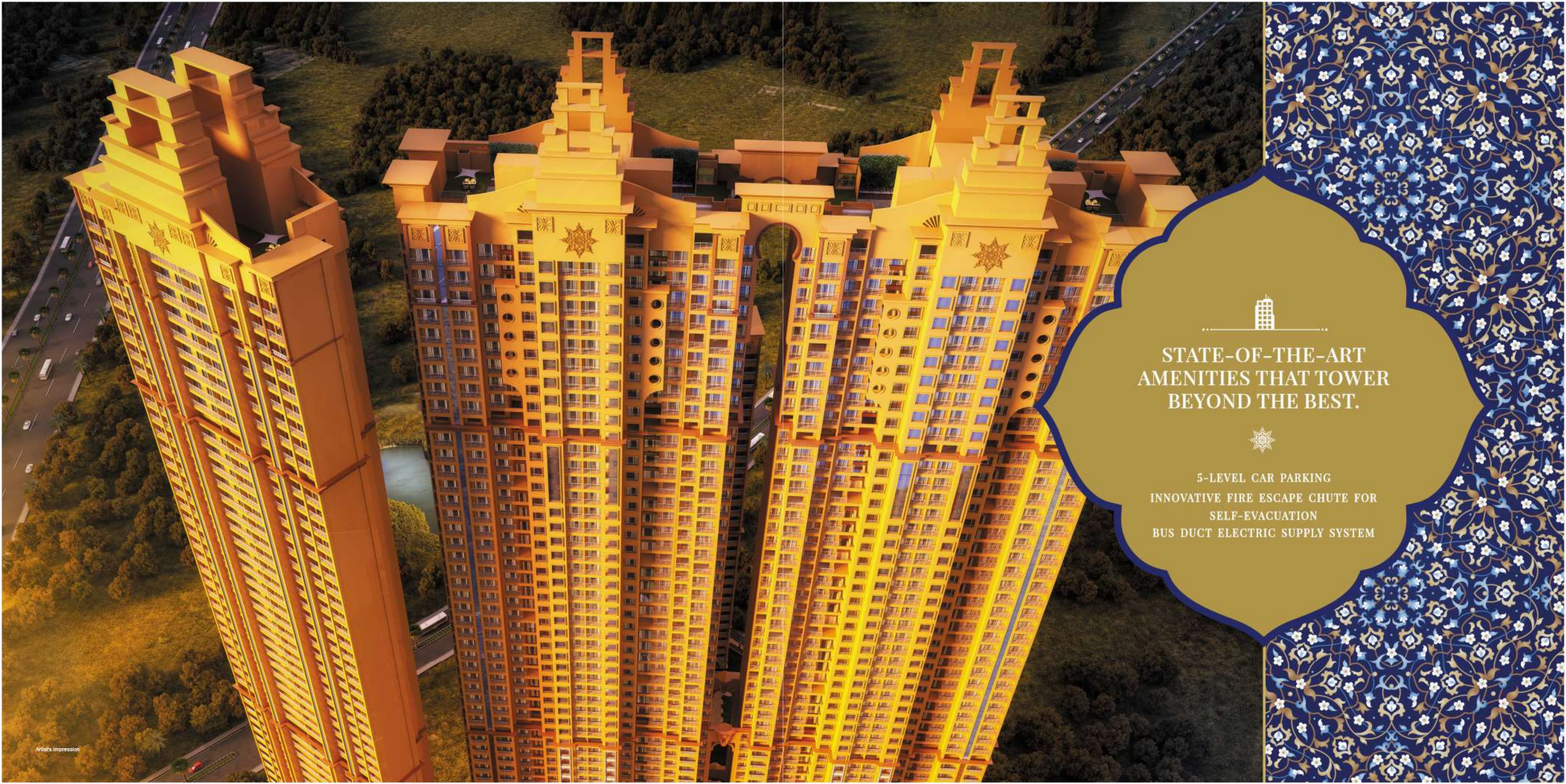


DYNAMIC INNOVATION  
AT THE HEART OF  
GRANDEUR.



ULTRA-MODERN TOWER FEATURES  
HI-SPEED ELEVATORS  
24x7 VIGILANT SECURITY SYSTEM  
VIDEO DOOR PHONE SYSTEM





STATE-OF-THE-ART  
AMENITIES THAT TOWER  
BEYOND THE BEST.



- 5-LEVEL CAR PARKING
- INNOVATIVE FIRE ESCAPE CHUTE FOR SELF-EVACUATION
- BUS DUCT ELECTRIC SUPPLY SYSTEM





*A Lifestyle Project*

# ARIHANT CLAN AALISHAN

AT A GLANCE



## PROJECT HALLMARKS

- BIG SIZE STUDIO, 1, 2 & 3 BHK RESIDENCES
- BARAZ 1 & 2 - 53 STOREY TOWERS
- KAVEH - 37 STOREY TOWER
- ZEENAT - 51 STOREY TOWER
- AAYAT - ENTRANCE LOBBY INSPIRED BY PERSIAN ARCHITECTURE
- KOLUP - CLUB INDULGENCES



## LOCATION ADVANTAGES

- LOCATED AMIDST THE GREEN AND SERENE ENVIRONS
- CLOSE TO UPCOMING NAVI MUMBAI CORPORATE PARK
- NEAR KHARGHAR VALLEY GOLF COURSE
- SECTOR 35, METRO STATION - 0.5 KM.
- VERY NEAR TO CENTRAL PARK
- FAMOUS LANDMARKS LIKE 'UTSAV CHOWK' AND 'SHILP CHOWK' NEARBY
- REPUTED EDUCATIONAL INSTITUTES IN CLOSE PROXIMITY
- CONNECTED WITH MUMBAI-PUNE HIGHWAY
- MARKET AREAS AND OTHER CONVENIENCES LIKE MALLS, MULTIPLEXES, KHARGHAR RAILWAY STATION ETC. A SHORT DISTANCE AWAY



## STATE-OF-THE-ART CLUBHOUSE

### RECREATION AND REJUVENATION FEATURES

- SUFIYANA - LOUNGE & CAFE WITHIN CLUBHOUSE
- HAMMAM - SPA WITH JACUZZI, STEAM AND SAUNA
- SWIMMING POOL
- YOGA AND MEDITATION CENTRE
- AEROBICS CENTRE
- HI-TECH GYMNASIUM

### INDOOR SPORTS ARENA

- INDOOR SPORTS CLUB WITH CHESS, BILLIARDS & CARDS ROOM
- BADMINTON & SQUASH COURT

### ENTERTAINMENT & KNOWLEDGE CENTRE

- JAZLAAN - MINI THEATRE
- LIBRARY WITH VARIED COLLECTION OF BOOKS
- BUSINESS LOUNGE



## DESIGNER LANDSCAPES INSPIRED BY PERSIAN LANDSCAPING

### PLAY AREA & ENTERTAINMENT CENTRE

- CHILDREN'S OUTDOOR PLAY AREA
- RAIN DANCE ARENA WITH WATER FOUNTAIN

### SERENE LANDSCAPES

- PAIRI DAEZA - GARDEN WITH SIT-OUTS
- HERBAL BOULEVARD
- LANDSCAPED PARTY AREA



## LUXURIOUS APARTMENT FEATURES

- VITRIFIED TILE FLOORING IN ALL ROOMS (800 MM x 800 MM)
- MODERN KITCHEN WITH WATER PURIFIER, GAS HOB & CHIMNEY
- GRANITE TOP KITCHEN PLATFORM WITH DOUBLE BOWL SINK
- SERVICE PLATFORM WITH FULL HEIGHT TILES UP TO BEAM LEVEL
- BATHROOM WITH BATHTUB, BASIN COUNTER, GLASS PARTITION
- PREMIUM QUALITY CP FITTINGS AND BRANDED SANITARY WARE
- MOULDED PANEL MAIN DOOR AND BATHROOM DOOR
- FRP DOORS FOR BATHROOMS
- UPVC SOUND RESISTANCE FRENCH WINDOWS
- LUSTRE/VELVET TOUCH PAINT WITH POP ON ALL WALLS

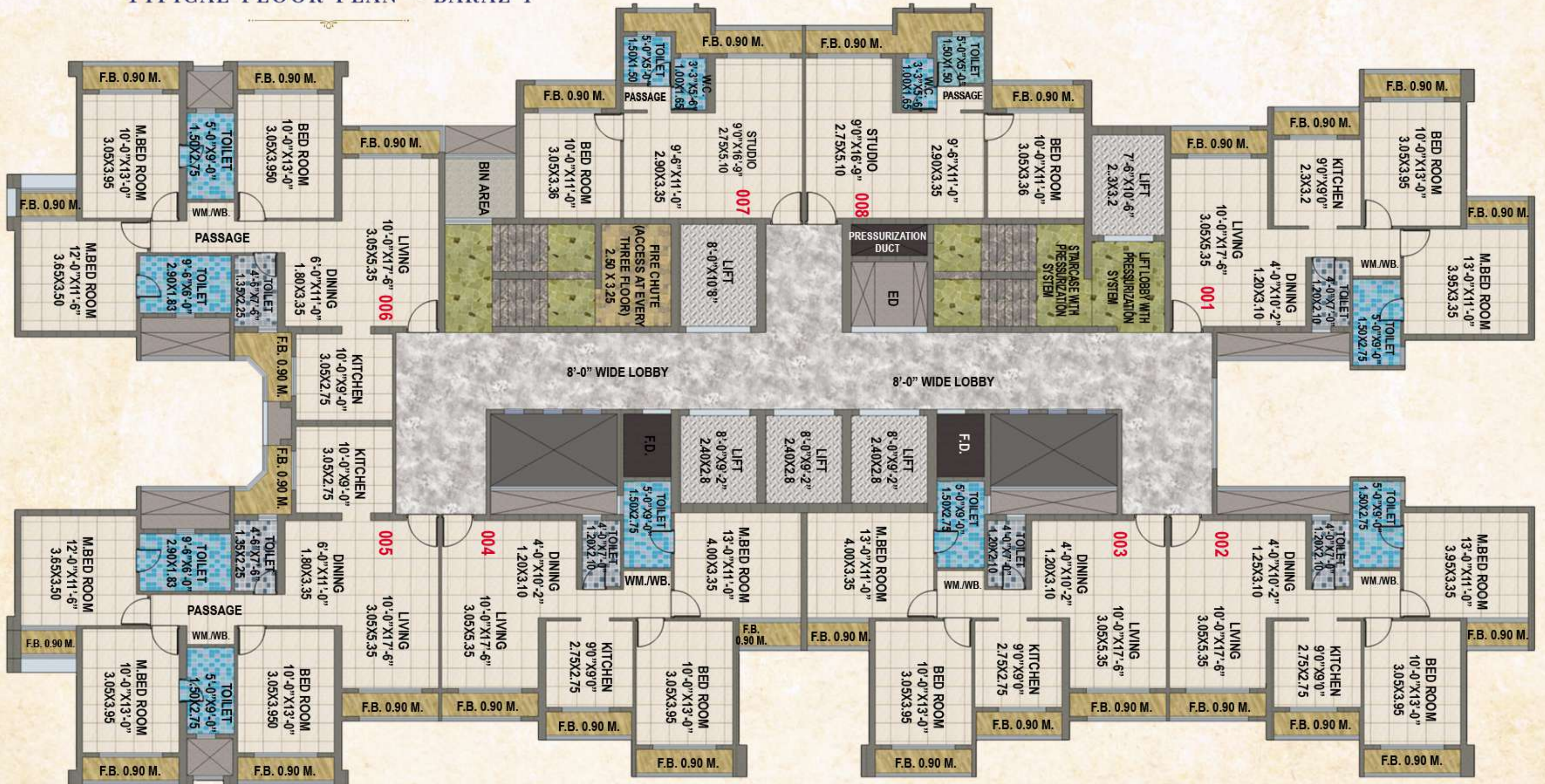


## ULTRAMODERN TOWER FEATURES & UTILITIES

- HI-SPEED ELEVATORS
- 27 x 7 VIGILANT SECURITY SYSTEM
- VIDEO DOOR PHONE SYSTEM
- 5-LEVEL CAR PARKING
- INNOVATIVE FIRE ESCAPE CHUTE FOR SELF-EVACUATION
- BUS DUCT FOR ELECTRICITY SUPPLY



# TYPICAL FLOOR PLAN - BARAZ 1

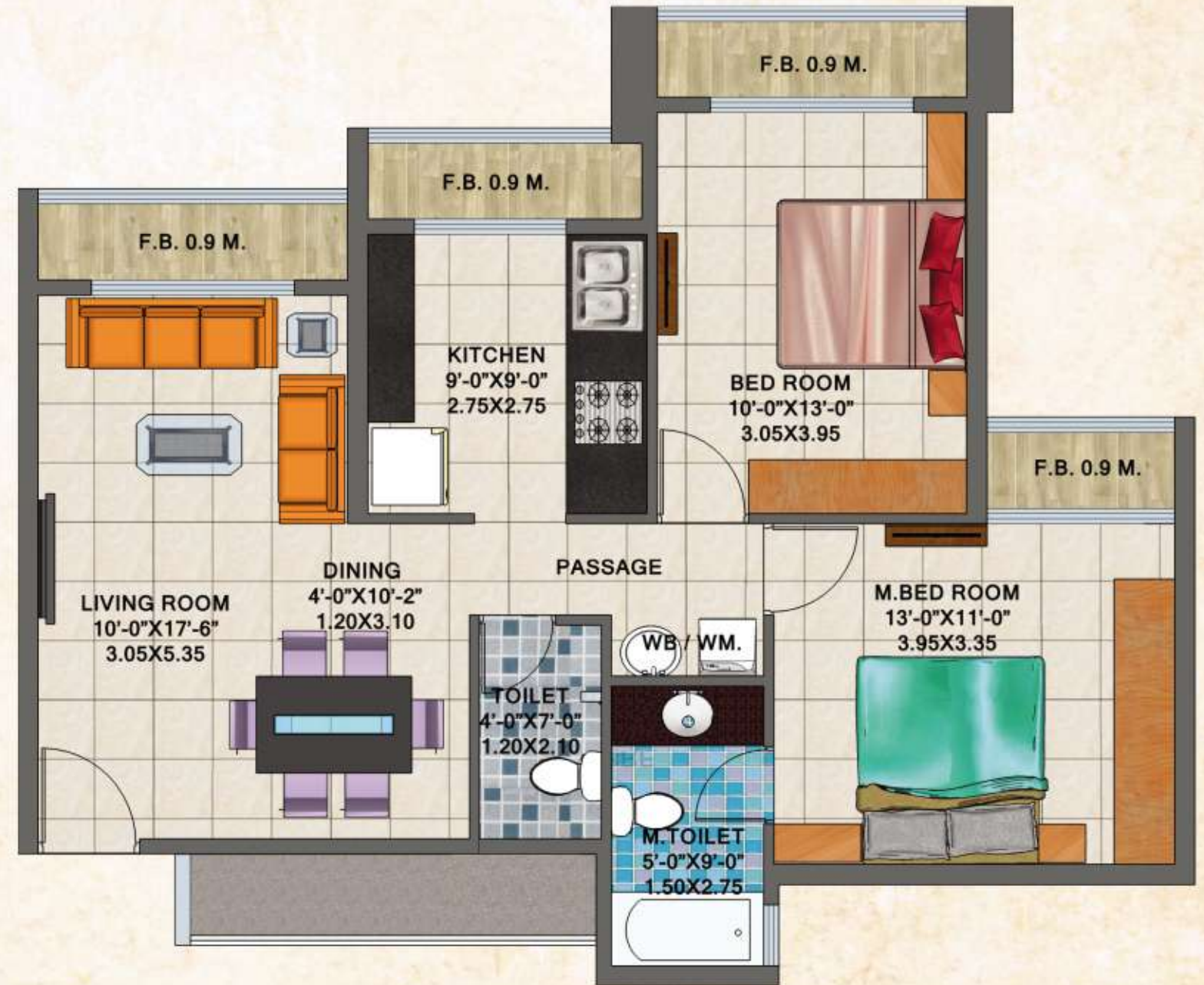




BARAZ - BIG-SIZE STUDIO

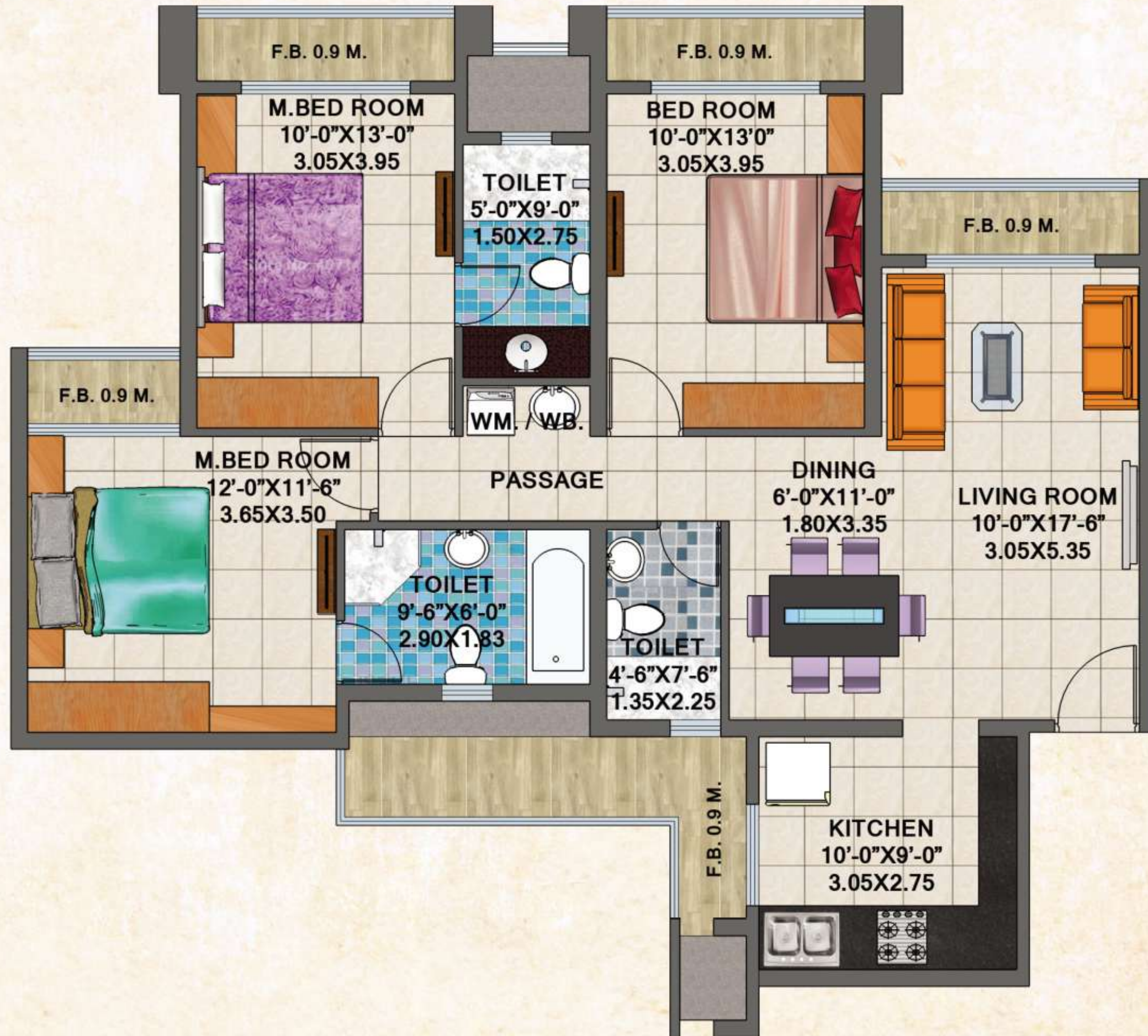


BARAZ - 2 BHK





BARAZ - 3 BHK

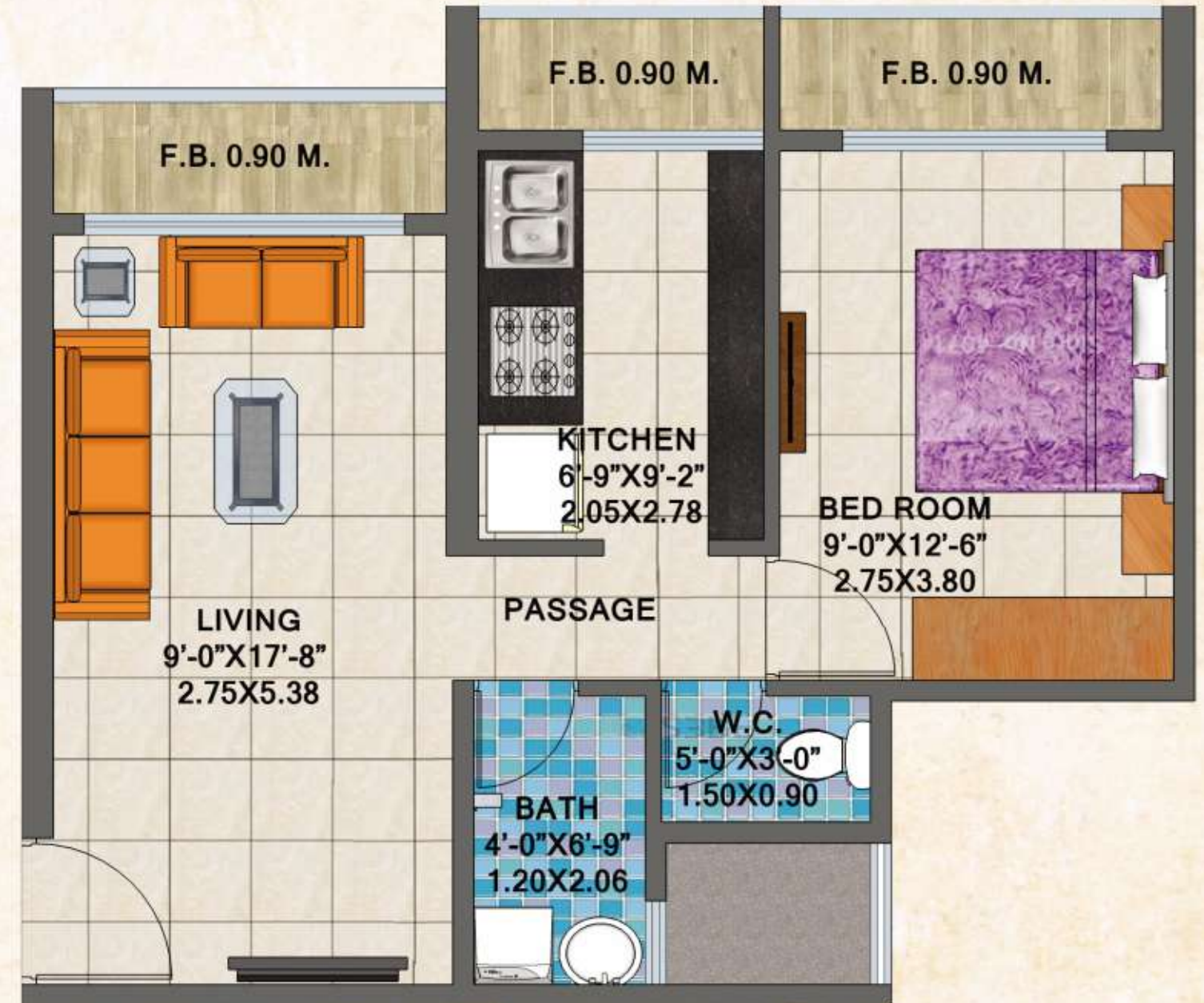




## TYPICAL FLOOR PLAN - KAVEH



## KAVEH - 1 BHK





KAVEH - 2 BHK TYPE 1



KAVEH - 2 BHK TYPE 2

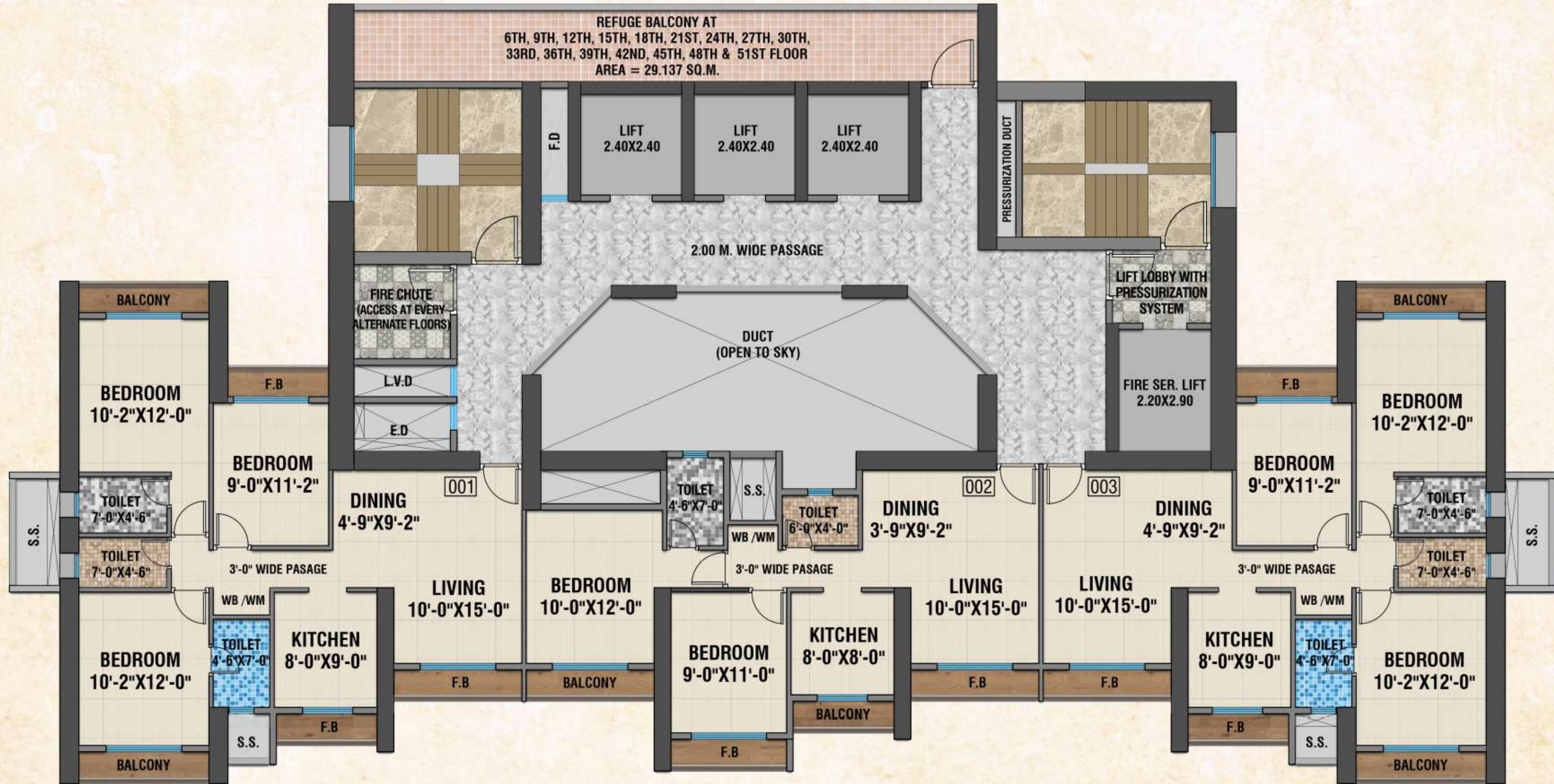






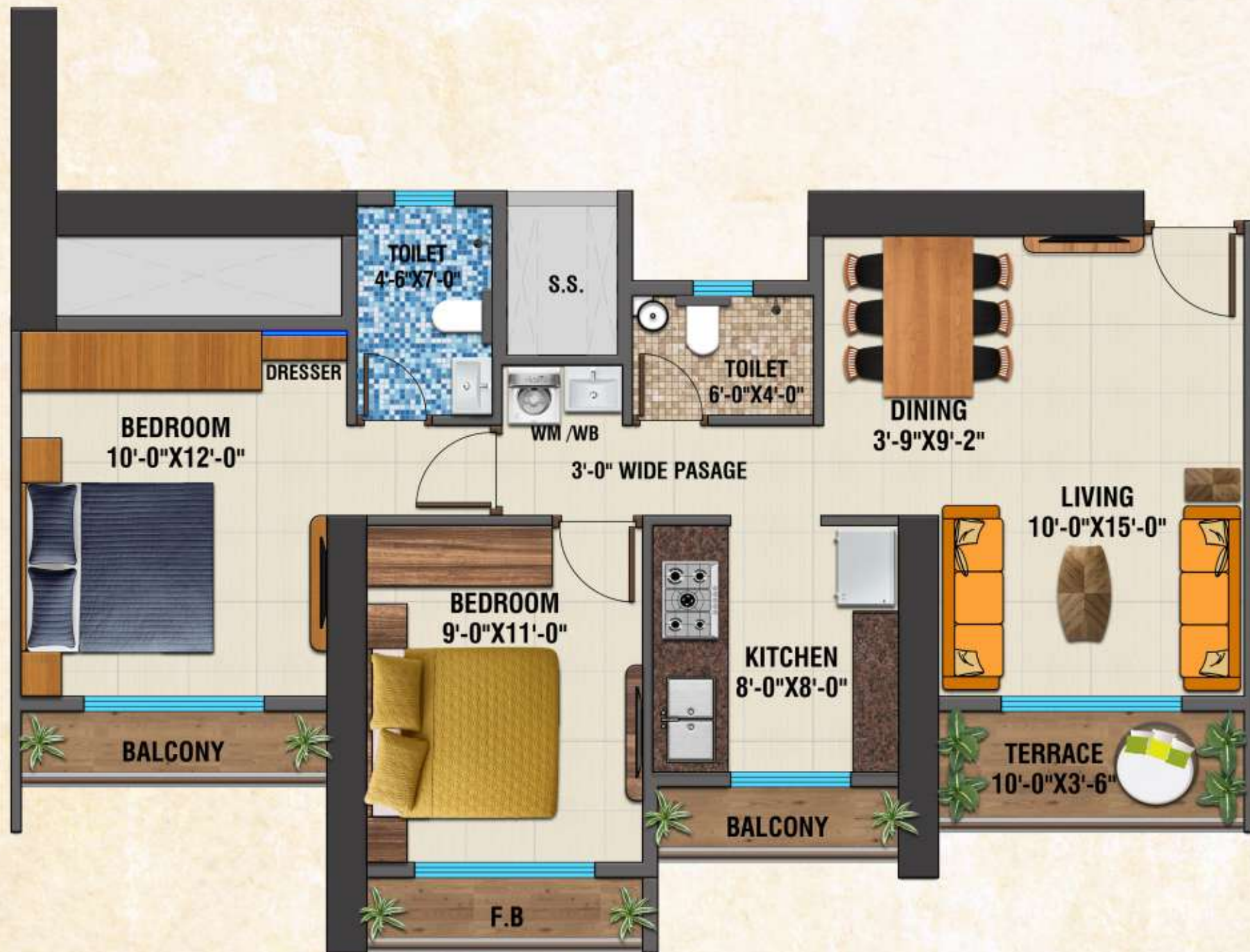


TYPICAL FLOOR PLAN - ZEENAT ODD FLOORS

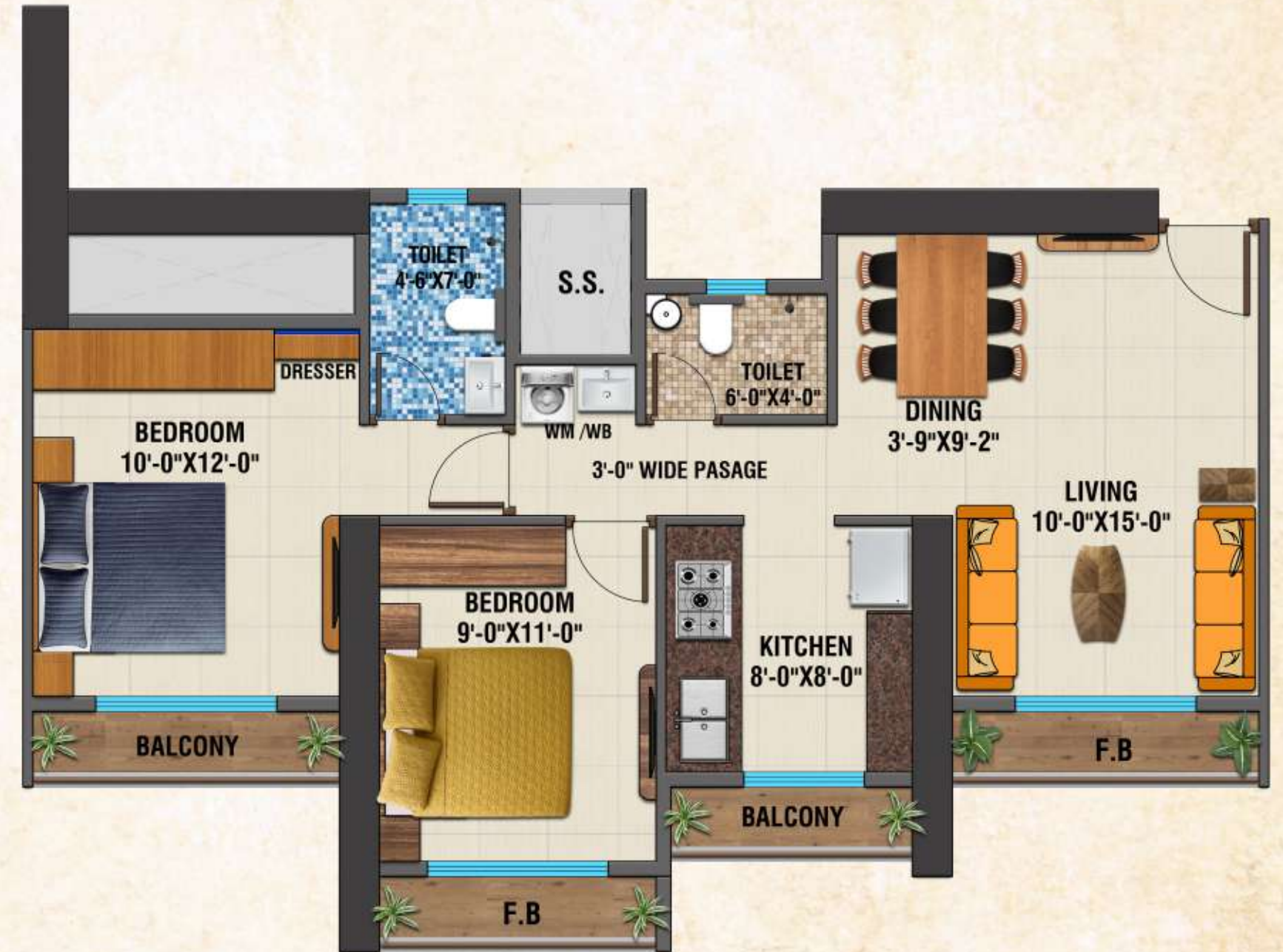




ZEENAT 2 BHK TYPE 1 - EVEN FLOORS



ZEENAT 2 BHK TYPE 2 - ODD FLOORS





ZEENAT 3 BHK TYPE 1 - EVEN FLOORS



ZEENAT 3 BHK TYPE 2 - ODD FLOORS

